

# OSMOND

sheffield façade



lancaster façade



kent façade



wiltshire façade



harrogate façade



callington façade



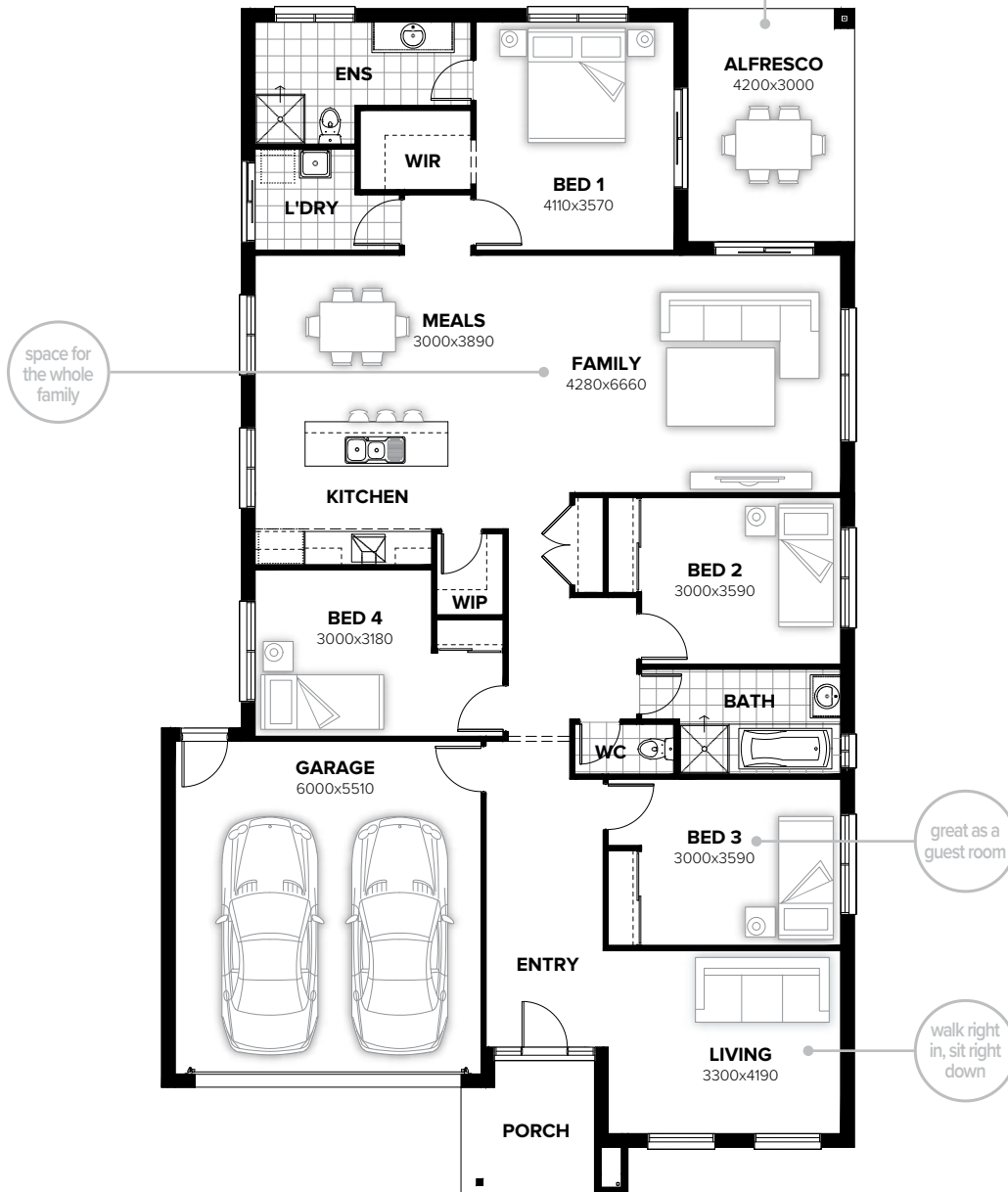
swansea façade



# OSMOND 235

4 2 1 2

entertaining  
made easy



## FLOORPLAN OPTIONS

Want to put a personal touch on your home? Speak to your New Home Consultant about the exciting range of ready-to-go design options for this floorplan.

Popular design options include:

- Kitchen option
- Storage to garage option
- Laundry upgrades
- Gas fireplace to family room
- Ensuite upgrades

min lot width	14.0m
min lot depth	30.0m
home width	12.47m
home length	21.35m

residence	178.92sqm	19.26sq
alfresco	12.60sqm	1.36sq
porch	5.74sqm	0.62sq
garage	36.28sqm	3.91sq
<b>total</b>	<b>233.54sqm</b>	<b>25.14sq</b>

Listed details based on Sheffield façade floorplan (illustrated)

Call 13 BURBANK Visit [burbank.com.au](http://burbank.com.au)

**Burbank**   
#noplacelikehome

\*Copyright conditions. All photos and illustrations are representative only. Floor plans and specifications may be varied by Burbank without notice, the dimensions are diagrammatic only and a Building Contract with final drawings will display correct dimensions and detail. All designs are the property of Burbank and must not be used, reproduced, copied or varied, wholly or in part without written permission from an authorised Burbank representative. Copyright Burbank Australia (SA) Pty Ltd. ABN 96 165 533 406. BLD 266709.

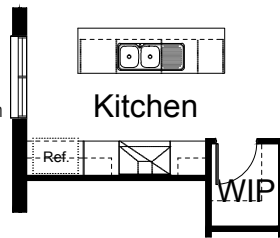
# FLOORPLAN OPTIONS

# OSMOND 235



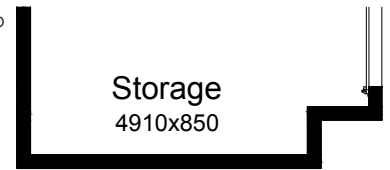
## OPTION K1

Provide Kitchen upgrade with 2no. 600mm base cupboards, 2no. 450mm overhead cupboards, 900mm upright oven with 900mm wide canopy range hood above. Island benchtop and cabinetry unchanged.



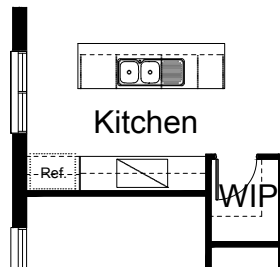
## OPTION G1

Provide extension to Garage to create additional Storage area. Increases area by 4.58m<sup>2</sup>. Increases width by 850mm.



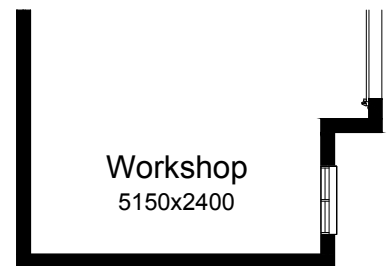
## OPTION K2

Provide Kitchen option with 900mm retractable range hood within overhead cabinet, 900mm cooktop and under bench oven, 1no. 350mm overhead cupboard, 1no. 300mm overhead cupboard, 1no. 350mm base cupboard and 1no. 300mm base cabinet.



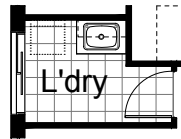
## OPTION G2

Provide extension to Garage to create Workshop area including additional window to suit. Increases width by 2400mm. Increases area by 13.51m<sup>2</sup>.



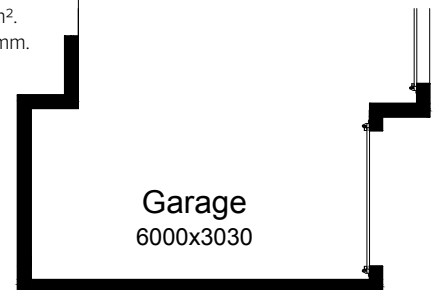
## OPTION LD1

Provide Laundry upgrade with laminated insert trough, 1no. 800mm base cupboard and 1no. 800mm overhead cupboard with additional tiled splash back and bench top to suit.



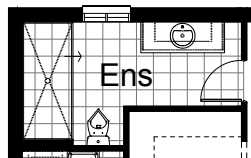
## OPTION G3

Provide triple car Garage including additional roller door to front. Increases area by 20.51m<sup>2</sup>. Increases width by 3120mm.



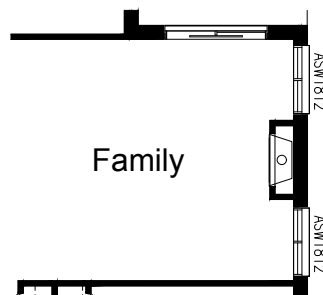
## OPTION ENS1

Provide Ensuite upgrade with 2100mm wide tiled shower base in lieu of standard and decrease aluminium sliding window to 1200mm x 850mm in lieu of 1200mm x 1450mm to suit.



## OPTION IP1

Provide Jetmaster SL-350 gas fireplace, 400mm off floor level in a 1400mm x 420mm boxed out plaster wall with a 4 sided black fascia to Family room side wall including additional 2no. 1800mm x 1210mm aluminium sliding window in lieu of 1no. 1800mm x 2410mm window.



Call 13 BURBANK Visit [burbank.com.au](http://burbank.com.au)

**Burbank**   
#noplacelikehome

\*Copyright conditions. All photos and illustrations are representative only. Floor plans and specifications may be varied by Burbank without notice, the dimensions are diagrammatic only and a Building Contract with final drawings will display correct dimensions and detail. All designs are the property of Burbank and must not be used, reproduced, copied or varied, wholly or in part without written permission from an authorised Burbank representative. Copyright Burbank Australia (SA) Pty Ltd. ABN 96 165 533 406. BLD 266709.