

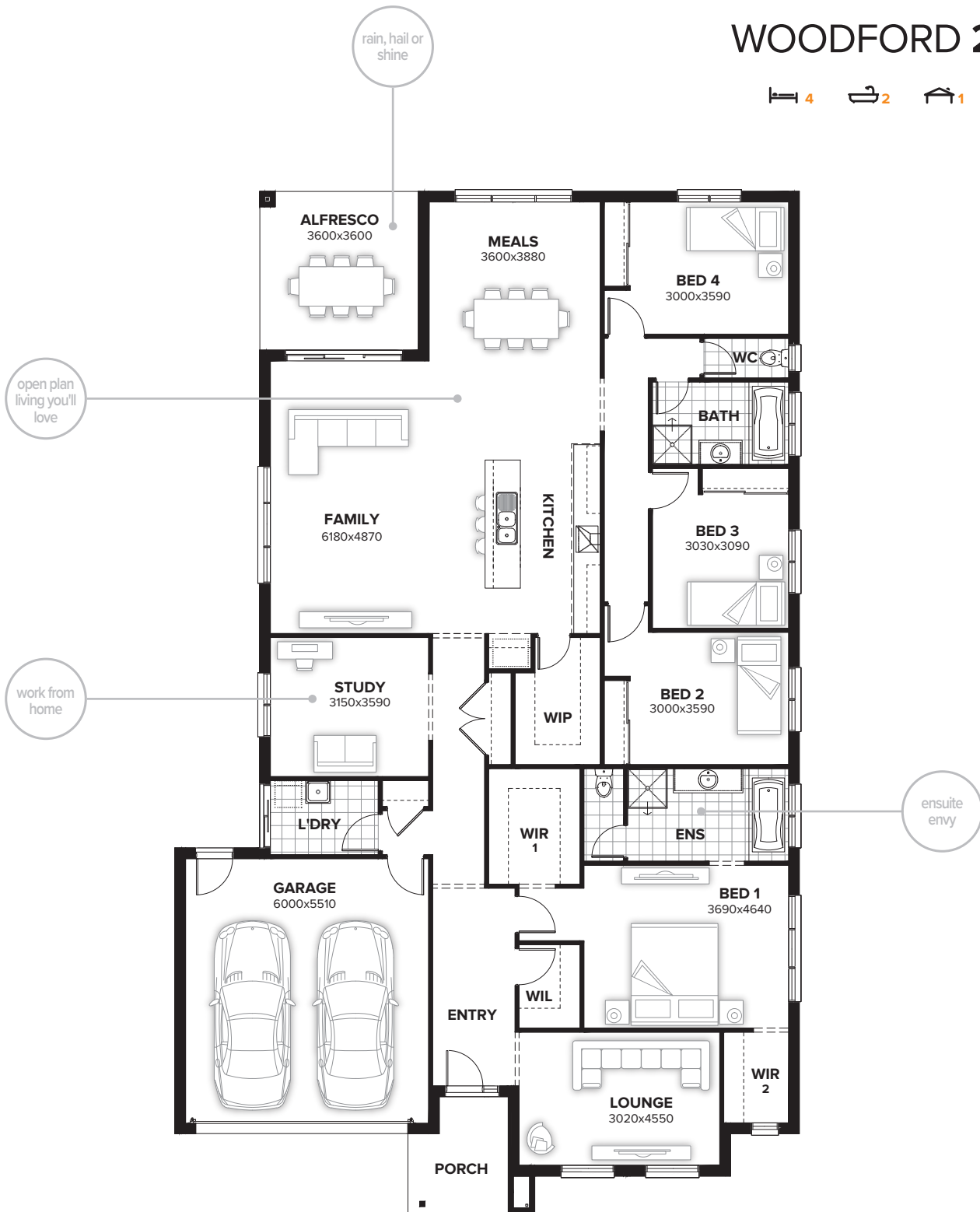
# WOODFORD



All façade images are artist's impressions only. These images may contain internal or external upgrade items such as feature renders and timber look garage doors. Images contain items not supplied by Burbank, which include furniture, landscaping, fencing and external lighting. See your New Home Consultant for full specifications.

# WOODFORD 285

4 2 1 2



## FLOORPLAN OPTIONS

Want to put a personal touch on your home? Speak to your New Home Consultant about the exciting range of ready-to-go design options for this floorplan. Popular design options include:

- |                   |                                |
|-------------------|--------------------------------|
| • Kitchen option  | • Bed 5 in lieu of study       |
| • Laundry upgrade | • Gas fireplace to family room |
| • Ensuite upgrade | • Grand alfresco option        |

min lot width	16.0m
min lot depth	32.0m
home width	14.15m
home length	23.15m

residence	227.60sqm	24.50sq
alfresco	12.96sqm	1.40sq
porch	5.70sqm	0.61sq
garage	36.48sqm	3.93sq
<b>total</b>	<b>282.74sqm</b>	<b>30.43sq</b>

Listed details based on Sheffield façade floorplan (illustrated)

Call 13 BURBANK Visit [burbank.com.au](http://burbank.com.au)

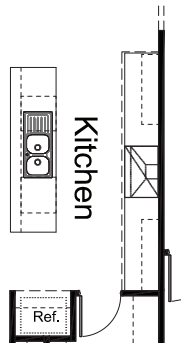
**Burbank**   
#noplacelikehome

\*Copyright conditions. All photos and illustrations are representative only. Floor plans and specifications may be varied by Burbank without notice, the dimensions are diagrammatic only and a Building Contract with final drawings will display correct dimensions and detail. All designs are the property of Burbank and must not be used, reproduced, copied or varied, wholly or in part without written permission from an authorised Burbank representative. Copyright Burbank Australia (SA) Pty Ltd. ABN 96 165 533 406. BLD 266709.



## OPTION K1

Provide Kitchen upgrade with 4no. 800mm base cupboards, 4no. 700mm overhead cupboards and 1no. 900mm upright oven with 900mm canopy range hood above. Kitchen recess reduced by 100mm to suit cabinetry sizes. Ref. space and island benchtop unchanged.



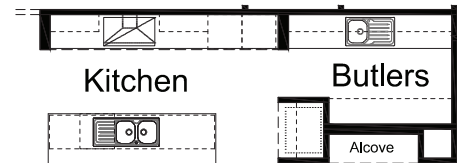
## OPTION K2

Provide Kitchen upgrade with Butlers pantry ILO WIP. Remove door to WIP and provide 840mm opening to Butlers Pantry. Relocate 1200mm opening to passage 300mm closer to kitchen. Provide 180mm nib wall adjacent to opening. Provide 1580mm(w) Alcove ILO Linen which creates 500mm void at end, near WIL, including 300mm(d) plaster bulkhead. Increase stud wall to 180mm(w) to back of Alcove. Relocate Ref space 90mm towards kitchen including wall to study to keep in line with ref space. Provide 180mm(w) nib between Butlers & Kitchen ILO std wall.

Kitchen Island: provide 900mm (w) bench tops with a 300mm overhang. 2no's 900mm base cupboards, dishwasher space and 450mm(w) bank of drawers. Kitchen: 3no's 900mm(w) base cupboards, 2no. wall oven towers with 4no. pot drawers below, 2no. wall ovens, 1no. coffee machine, 1no. microwave, 2no.

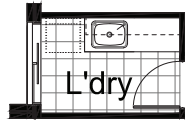
overhead cupboards. 2no's 800mm(w) overhead cupboards. 900 cooktop and canopy rangehood. double bowl sink. Dishwasher provision.

Butlers: 4no's 450mm(w) shelves. 3no's 800mm(w) & 1no's 400mm(w) base cupboards. 3no's 800mm(w) & 1no's 400mm(w) Overhead cupboards, and single bowl sink



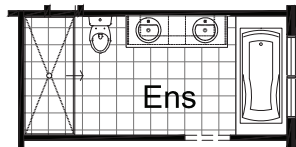
## OPTION LD1

Provide Laundry Option with 2no. 800mm base cupboards and 2no. 800mm overhead cupboards with additional tiled splash back and bench top to suit.



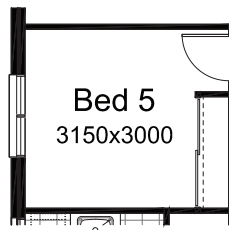
## OPTION ENS1

Provide Ensuite upgrade with wall to wall tiled shower base in lieu of 900mm x 900mm shower base, 1782mm wide vanity with double basins in lieu of standard 1582mm wide vanity. Delete plaster lined enclosed toilet and 1no. 720mm flush panel hinged door and relocate toilet and shower to suit.



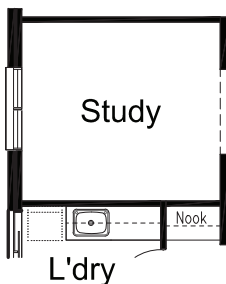
## OPTION IP1

Provide Bed 5 Option in lieu of standard Study and provide site built plaster lined robe with vinyl sliders, 1no. hanging rail and 1no. shelf to suit.



## OPTION IP3

Provide 180mm stud wall to Study wall of opening. Redesign Linen to outside of laundry to be nook with 180mm stud wall from study to continue through. Delete hinged door. Provide open shelf with hooks beneath and stone bench with shelves beneath, with mirror to back





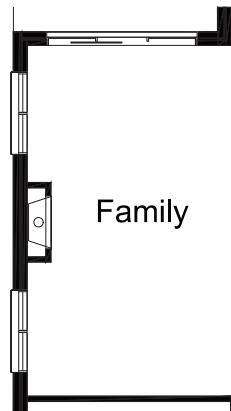
# FLOORPLAN OPTIONS

# WOODFORD 285



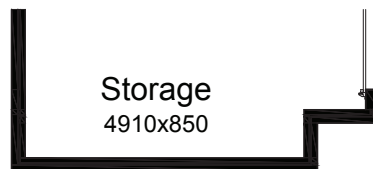
## OPTION IP2

Provide Jetmaster SL-350 gas fireplace, 400mm off floor level in a 1400mm x 420mm boxed out plaster wall with a 4 sided black fascia to Family room side wall with 2no. 2057mm x 1450mm aluminium sliding windows in lieu of standard 1no. 2057mm x 2650mm window to suit.



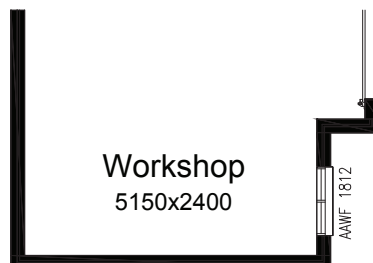
## OPTION G1

Provide extension to Garage to create additional Storage area. Increase area by 4.58m<sup>2</sup>. Increases width by 850mm.



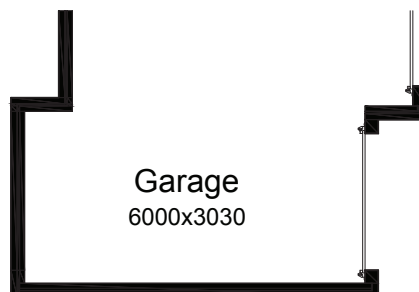
## OPTION G2

Provide extension to Garage to create Workshop area including additional window to suit. Increase area by 13.51m<sup>2</sup>. Increases width by 2400mm.



## OPTION G3

Provide triple car Garage including additional roller door to front. Increase area by 20.51m<sup>2</sup>. Increases width by 3120mm.



Call 13 BURBANK Visit [burbank.com.au](http://burbank.com.au)

**Burbank**   
#noplacelikehome

\*Copyright conditions. All photos and illustrations are representative only. Floor plans and specifications may be varied by Burbank without notice, the dimensions are diagrammatic only and a Building Contract with final drawings will display correct dimensions and detail. All designs are the property of Burbank and must not be used, reproduced, copied or varied, wholly or in part without written permission from an authorised Burbank representative. Copyright Burbank Australia (SA) Pty Ltd. ABN 96 165 533 406. BLD 266709.

# FLOORPLAN OPTIONS

# WOODFORD 285



## OPTION G2

Ensuite: Upgrade with wall to wall tiled shower base in lieu of 900mm x 900mm shower base, 1782mm wide vanity with double basins in lieu of standard 1582mm wide vanity. Delete plaster lined enclosed toilet and 1no. 720mm flush panel hinged door and relocate toilet and shower to suit.

Reduce width of ensuite by 150mm to 1950mm(w) ILO 2100mm. Relocate Ensuite window 120mm towards Bedroom 2.

Bedroom 1: Increase bedroom 1 width by 30mm to be 3720mm ILO 3690mm & length by 90mm to be 6200mm ILO 6110mm. Relocate bedroom 1 window 120mm towards Ensuite.

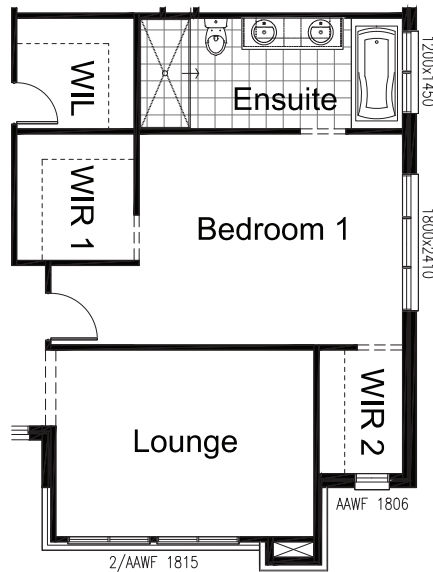
WIR 1: Redesign & relocate WIR and provide 2230mm x 1770mm WIR with 800mm opening. Shelving configuration changes to suit.

Lounge: Increase lounge room width (including

WIR 2 wall) by 120mm to be 3290mm ILO 3170mm. Increase width of plaster bulkhead to opening to be 180mm ILO 90mm

WIL: Redesign WIR 1 to be WIL, reduce by 670mm to be 1950mm ILO 2620mm. Provide 720mm hinged door ILO 820mm Opening. Shelving configuration changes to suit.

As Display at Lot 21 Wise crt, Mount Barker



## OPTION K2D

Provide Kitchen upgrade with Butlers pantry ILO WIP. Remove door to WIP and provide 840mm opening to Butlers Pantry. Relocate 1200mm opening to passage 300mm closer to kitchen. Provide 180mm nib wall adjacent to opening. Provide 1580mm(w) Alcove ILO Linen which creates 500mm void at end, near WIL. Increase stud wall to 180mm(w) to back of Alcove. Relocate Ref space 90mm towards kitchen including wall to study to keep in line with ref space. Line up opening of study to line up with Alcove. Provide 180mm(w) nib between Butlers & Kitchen ILO std wall. Colour under panel to overhead cupboards. Provide 40mm stone bench tops ILO laminate. Glass splashback ILO tiles. Provide 40mm stone bench tops ILO laminate. Provide 2740mm(h) ceilings. Overhead cupboards to be 717mm(h) ILO 600mm.

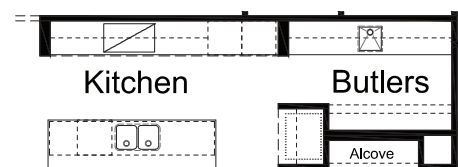
Kitchen Island: provide 900mm bench tops with a 300mm overhang. 2no's 900mm base cupboards, dishwasher space and 450mm(w) bank of drawers. 40mm bench top to have wrap down sides.

Kitchen: 3no's 900mm(w) bank of pot drawers, 2no. wall oven towers with 4no. pot drawers below, 2no. wall ovens, 1no. coffee machine, 1no. microwave, 4no. pull open overhead cupboards. 3no's 900mm(w) overhead cupboards. 900 cook top and integrated rangehood, undermount double sink with drainage grooves in benchtop. Intergrated dishwasher. Open shelf above ref space ILO overhead cupboard.

Butlers: 3no's 300mm(w) shelves & 2no's 450mm(w) shelves. 2no's 800mm(w) & 1no's 400mm(w) base cupboards. 1no's 800mm bank of drawers. 3no's 800mm(w) & 1no's 400mm(w) Overhead cupboards, and undermount single sink

As Display at Lot 21 Wise crt, Mount Barker

Display overheads are 717mm(h) due to raised ceiling height of 2740.



Call 13 BURBANK Visit [burbank.com.au](http://burbank.com.au)

**Burbank**   
#noplacelikehome

\*Copyright conditions. All photos and illustrations are representative only. Floor plans and specifications may be varied by Burbank without notice, the dimensions are diagrammatic only and a Building Contract with final drawings will display correct dimensions and detail. All designs are the property of Burbank and must not be used, reproduced, copied or varied, wholly or in part without written permission from an authorised Burbank representative. Copyright Burbank Australia (SA) Pty Ltd. ABN 96 165 533 406. BLD 266709.