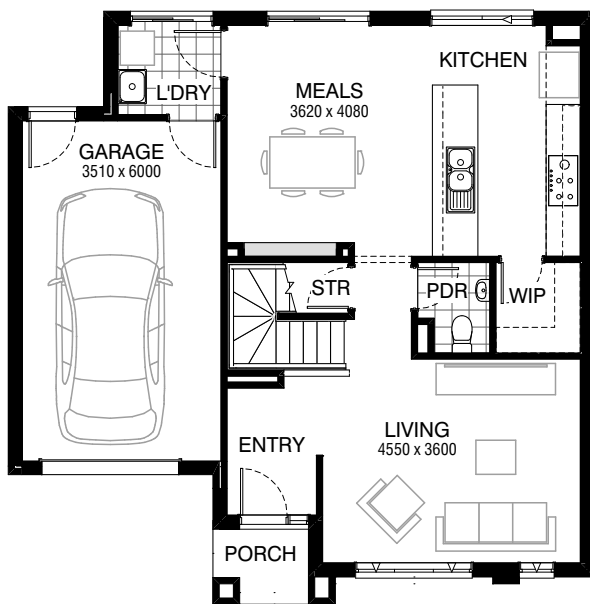
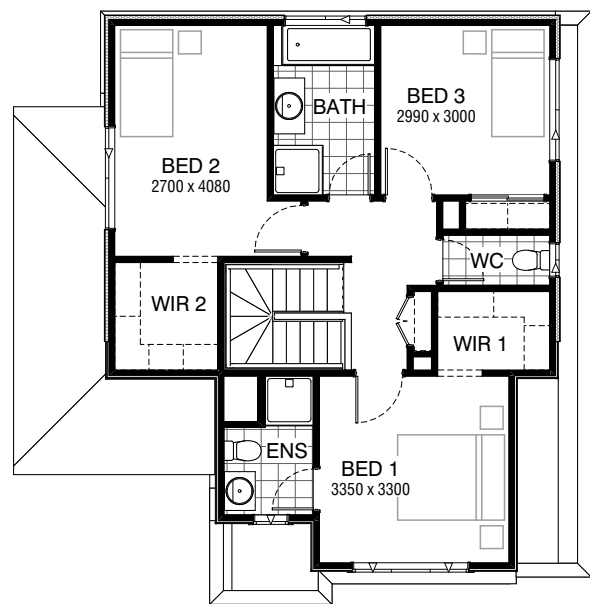


Total squares **17.2sq**



GROUND FLOOR



FIRST FLOOR

**FLOORPLAN OPTIONS**

All available ready-to-go floorplan options for this design can be viewed on the following pages, or visit [www.burbank.com.au](http://www.burbank.com.au).

**Facades available:**

Condor, Matisse, Monet	
<b>Overall home width</b>	<b>10.31m</b>
<b>Overall home length</b>	<b>10.43m</b>




Residence	133.8m <sup>2</sup>	14.4sq
Garage	23.8m <sup>2</sup>	2.6sq
Porch	2.2m <sup>2</sup>	0.2sq
<b>Total</b>	<b>159.8m<sup>2</sup></b>	<b>17.2sq</b>

Listed details based on Condor façade floorplan (illustrated)

\*Copyright conditions. All photos and illustrations are representative only. Floor plans and specifications may be varied by Burbank without notice, the dimensions are diagrammatic only and a Building Contract with final drawings will display correct dimensions and detail. All designs are the property of Burbank and must not be used, reproduced, copied or varied, wholly or in part without written permission from an authorised Burbank representative. Copyright Burbank Australia Pty Ltd. ABN 91 007 099 872. Builders Registration Number CDB-U-52603.

**Call 13 BURBANK**  
**Visit [burbank.com.au](http://burbank.com.au)**

**FLOORPLAN OPTIONS**




 **3**     **2.5**     **1**

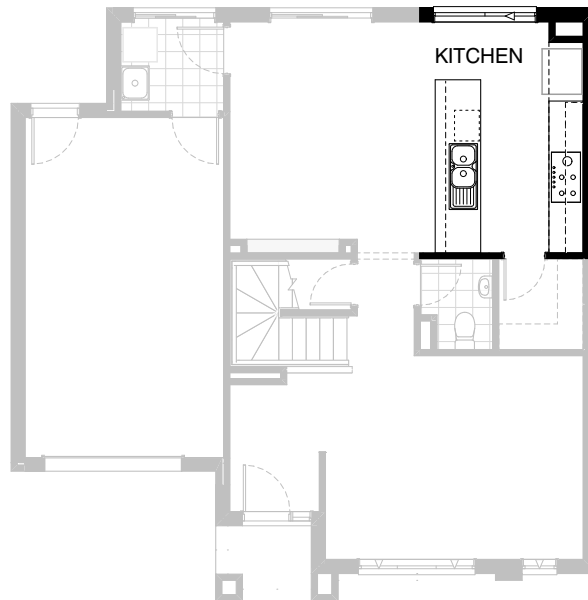


**Option K-1**

Provide kitchen option with 1no. laminated  
open shelf above refridgerator space

**FLOORPLAN OPTIONS**




 **3**    **2.5**    **1**

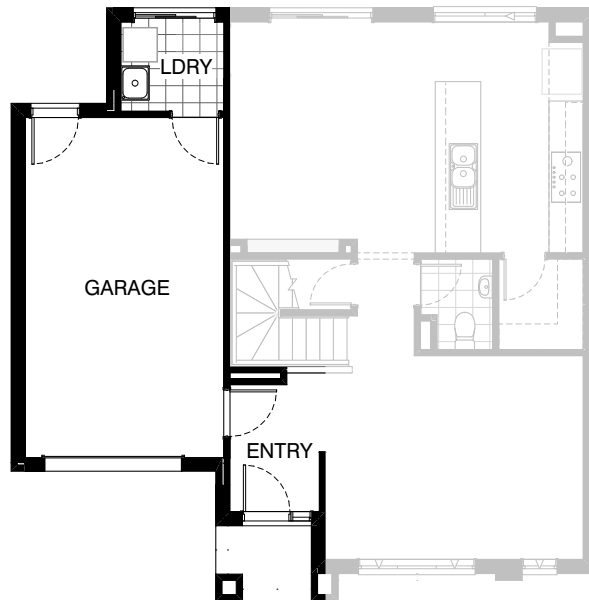


**Option K-2**

Provide Kitchen Option with 1no. MW. provision  
in lieu of 1no. 600mm base cabinet to kitchen  
island. Adjust bench top to suit

**FLOORPLAN OPTIONS**




 **3**    **2.5**    **1**

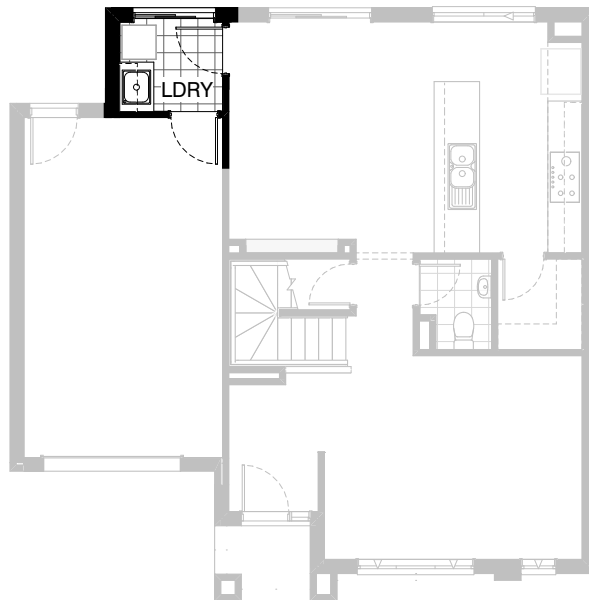


**Option LD-1**

Delete door to Laundry from Meals, re-swing door from Garage and provide hinged access door to Garage off Entry.

**FLOORPLAN OPTIONS**




 **3**     **2.5**     **1**

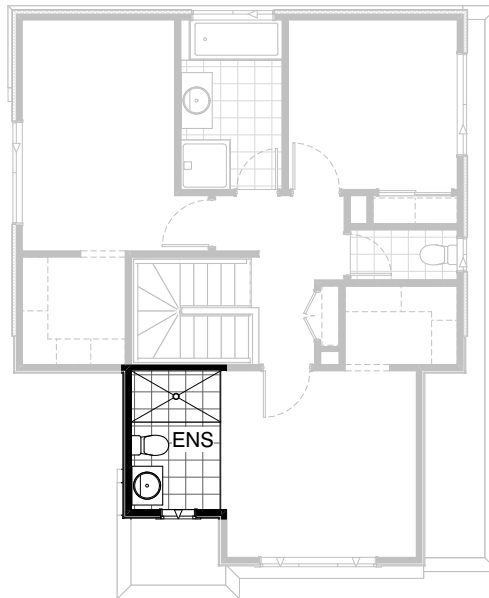


**Option LD-2**

Provide Laundry Upgrade with laminated inset trough, 1no. 800mm base cabinet and 1no. 800mm overhead cabinet with additional tiled splashback and bench top to suit.

**FLOORPLAN OPTIONS**

 **3**    **2.5**    **1**






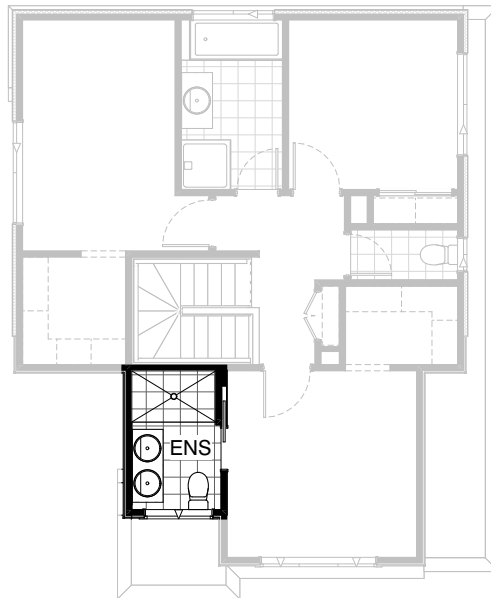
**Option ENS-1 FF**

Provide Ensuite upgrade with wall to wall tiled shower base in lieu of standard 1no. 900mm x 900mm polymarble shower base and delete void to suit.

**Note: This Option can only be used with the Condor facade**

**FLOORPLAN OPTIONS**

 **3**     **2.5**     **1**






**Option ENS-2 FF**

Provide Ensuite option with 1no. wall to wall tiled shower base, 1no. 1482mm wide vanity unit with 2no. basins, 1no. 720mm cavity sliding door and 1no. 1027mm x 1210mm aluminium awning window to suit.

**Note: This Option can only be used with the Condor facade**

**FLOORPLAN OPTIONS**

 **3**    **2.5**    **1**






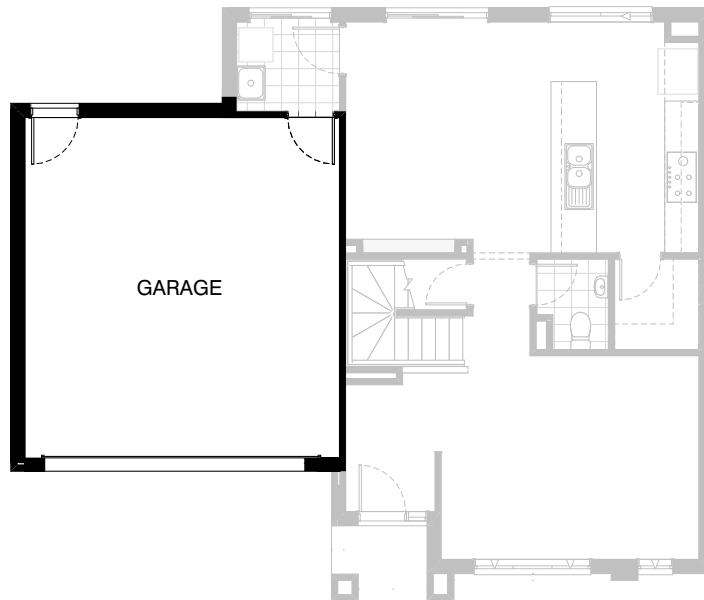
**Option EP-1**

Provide Alfresco to rear of Meals / Kitchen with tiled hip roof, structural concrete floor, light point and 2no. 470mm x 470mm brick piers.  
Increases area by 20.18m<sup>2</sup>.  
Increase length by 3240mm.



**FLOORPLAN OPTIONS**

 **3**     **2.5**     **1**



**Option G-1**

Provide double car Garage including additional  
Garage door as per colour selection.  
Increases area by 13.19m<sup>2</sup>.  
Increases width by 2040mm.