


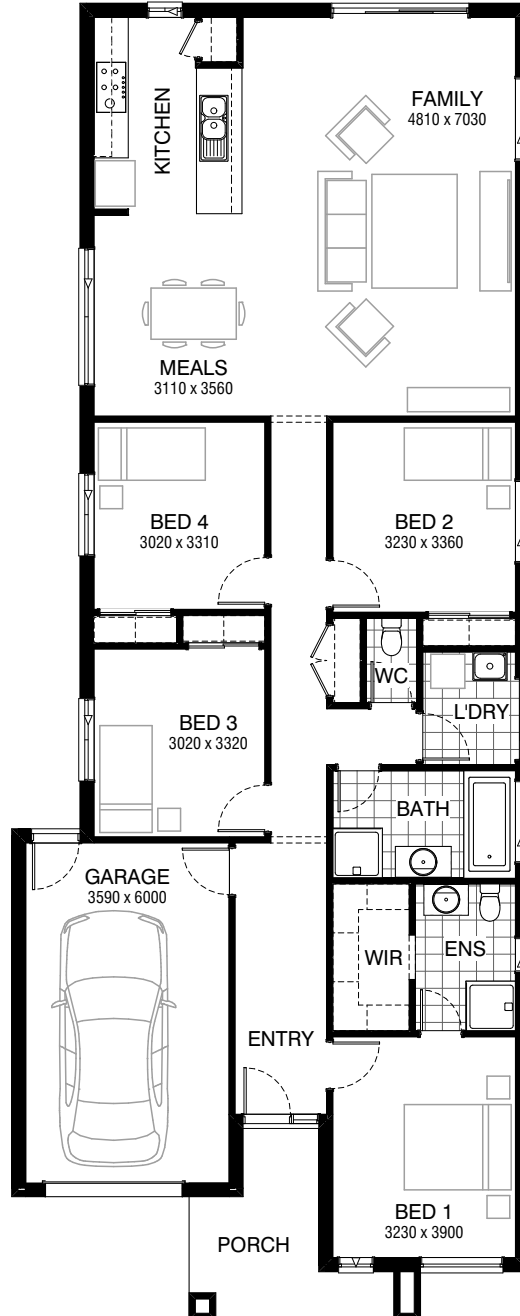


Total squares **19.9sq**

 **4**  **2**  **1**



FLOORPLAN OPTIONS

All available ready-to-go floorplan options for this design can be viewed on the following pages, or visit www.burbank.com.au.

Facades available:

Drysdale, Arkley, Nolan	
Dowd, Haring	
Overall home width	9.11m
Overall home length	23.15m




Residence	152.7m ²	16.4sq
Garage	24.4m ²	2.6sq
Porch	8.0m ²	0.9sq
Total	185.1m²	19.9sq

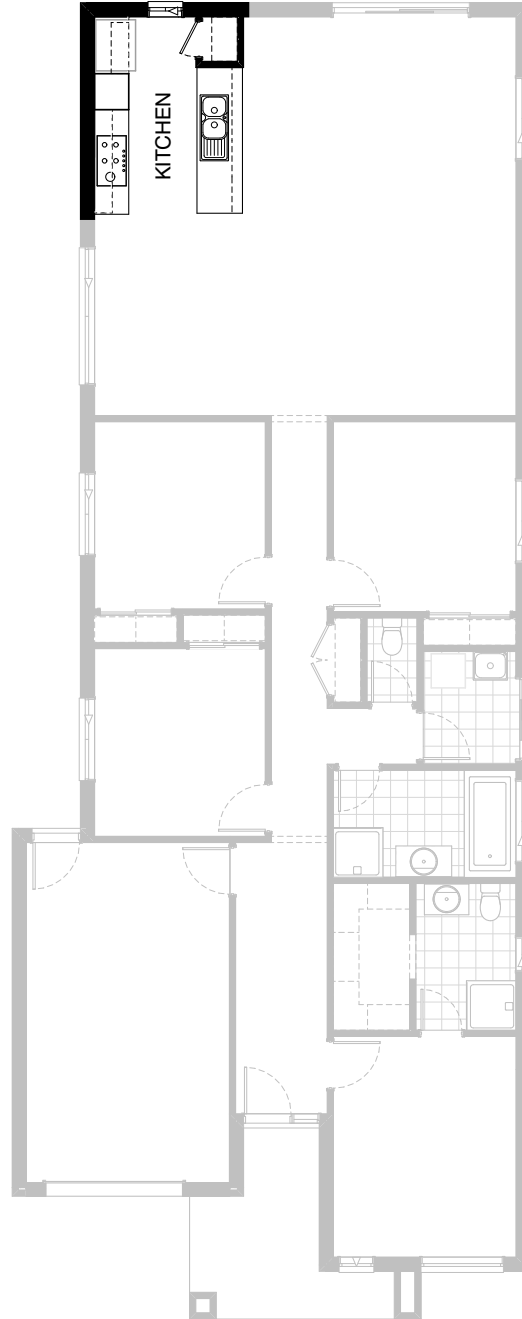
Listed details based on Drysdale façade floorplan (illustrated)

*Copyright conditions. All photos and illustrations are representative only. Floor plans and specifications may be varied by Burbank without notice, the dimensions are diagrammatic only and a Building Contract with final drawings will display correct dimensions and detail. All designs are the property of Burbank and must not be used, reproduced, copied or varied, wholly or in part without written permission from an authorised Burbank representative. Copyright Burbank Australia Pty Ltd. ABN 91 007 099 872. Builders Registration Number CDB-U-52603.

Call 13 BURBANK
Visit burbank.com.au

FLOORPLAN OPTIONS




 **4**  **2**  **1**

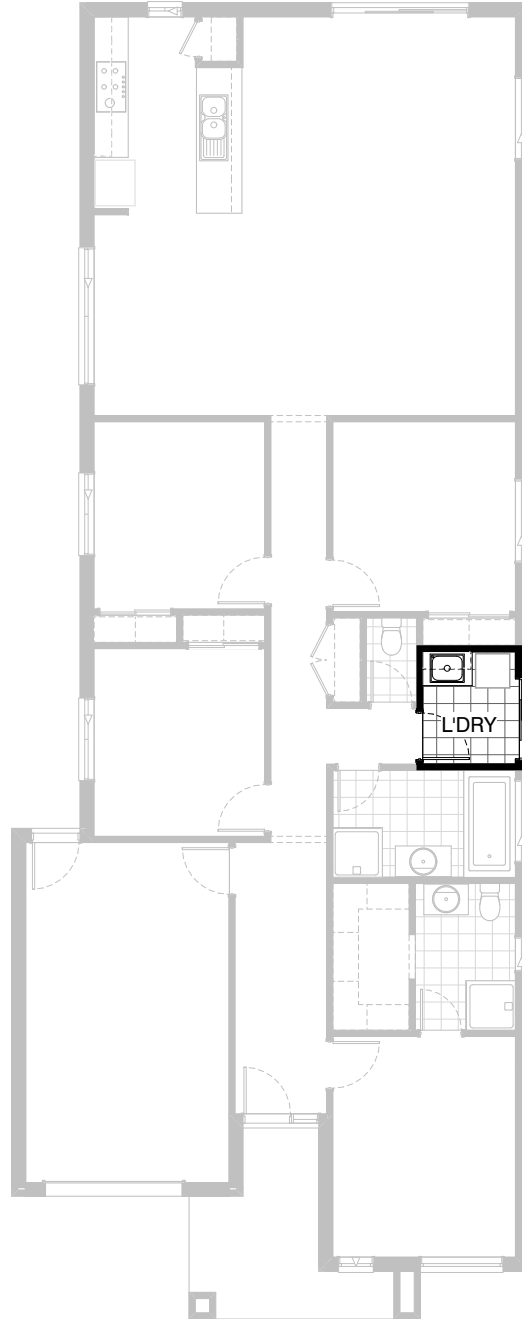


Option K-1

Provide Kitchen upgrade including laminated shelf space above refrigerator space, 1no 900mm cooktop, 1no. 900mm under bench oven, 1no. 900mm retractable rangehood, laminated appliance tower with 3no. pot drawers and microwave provision, 2no. 450mm base cabinets, 2no. 400mm overhead cabinets.

FLOORPLAN OPTIONS




 **4**  **2**  **1**

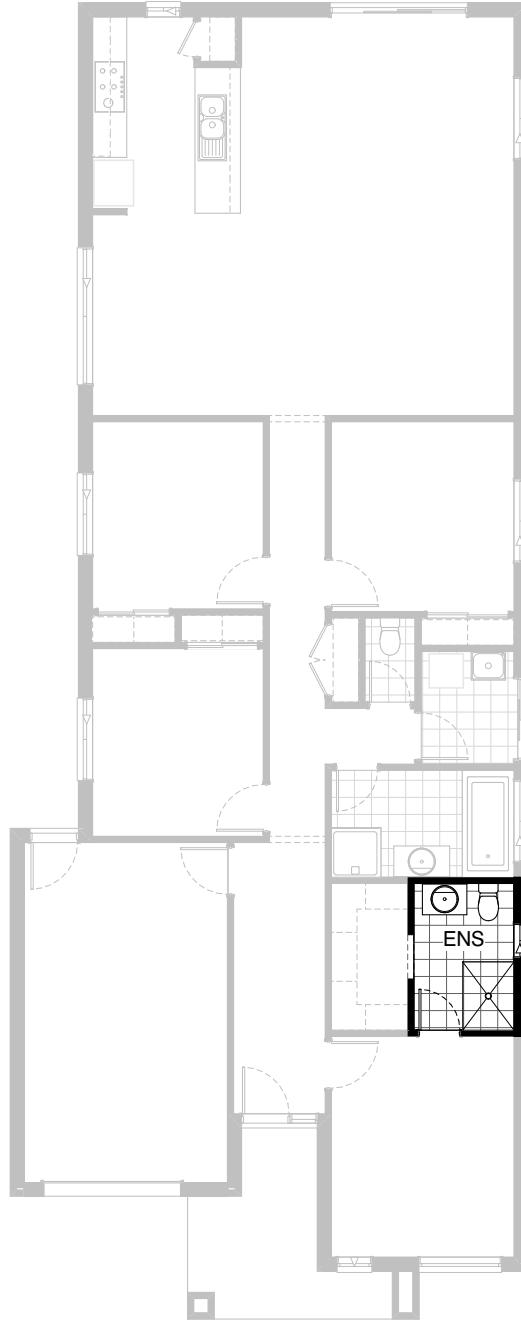


Option LD-1

Provide Laundry upgrade including s.s.
inset trough in 32mm laminated bench top,
1no. 800mm base cabinet,
1no. 800mm overhead cabinet,
additional tiled splashback and bench top to suit.

FLOORPLAN OPTIONS




 **4**  **2**  **1**

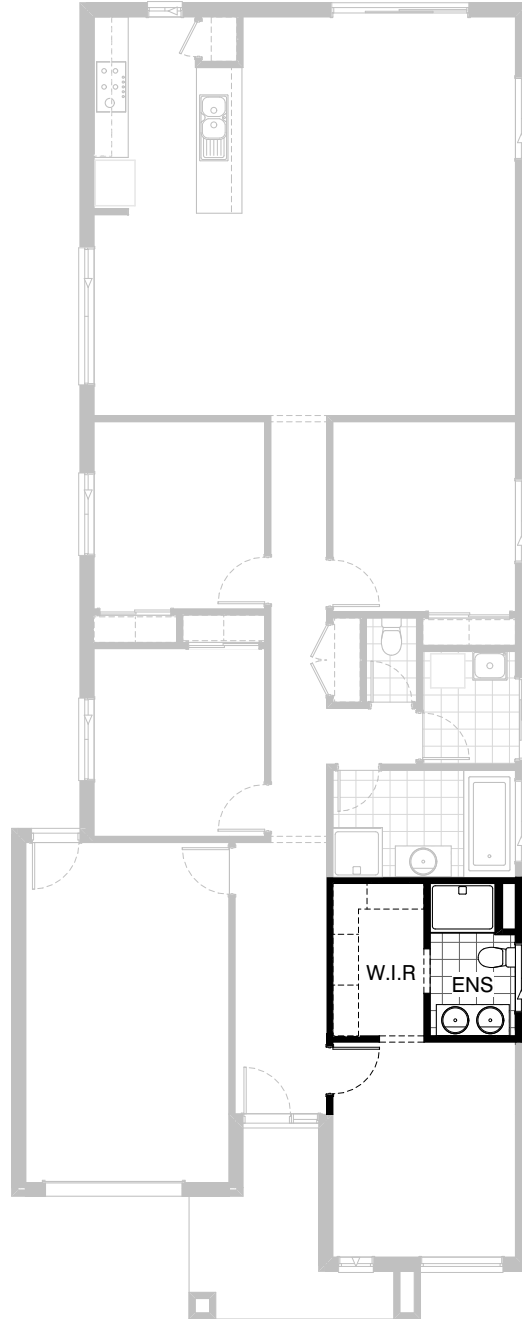


Option ENS-1

Provide Ensuite upgrade including
1200mm x 900mm recessed tile shower
base and relocate window to suit.

FLOORPLAN OPTIONS




 **4**  **2**  **1**

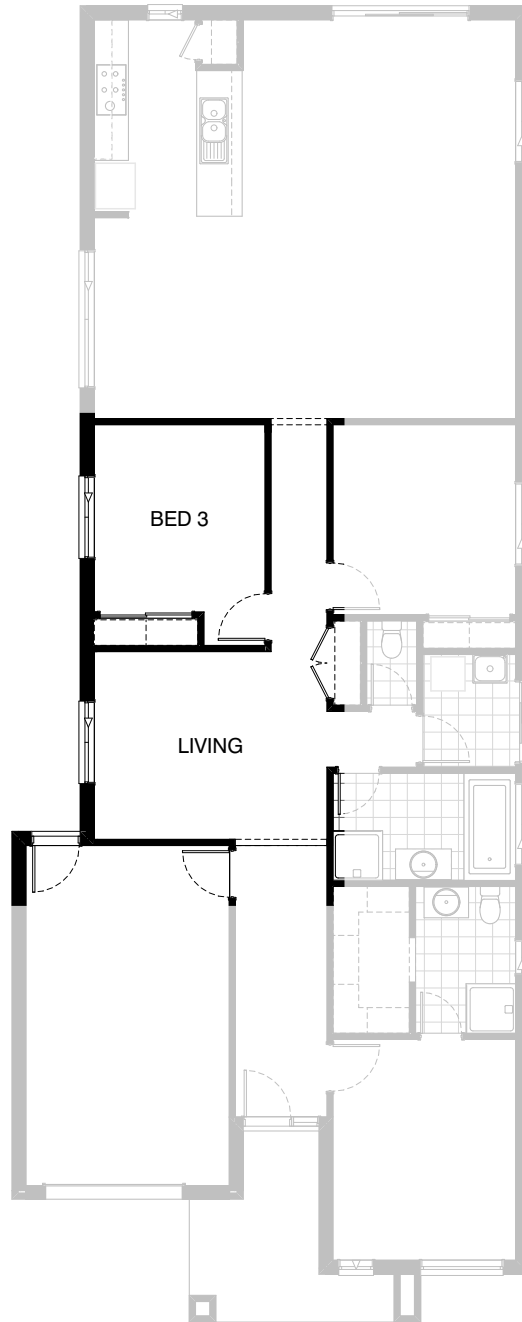


Option ENS-2

Provide Ensuite option with additional 1no.
1200mm x 900mm polymarble shower base,
1no. 1282mm wide vanity unit with 2no. basins and
1no. 1200mm x 1210mm aluminium sliding window.
Increase Ensuite / WIR length by 100mm and decrease Bed 1 to suit.
Increase WIR width by 260mm and decrease Ensuite to suit.
Delete 1no. 720mm hinged door to Ensuite and provide
1no. 800mm opening to suit.

FLOORPLAN OPTIONS




 **4**  **2**  **1**

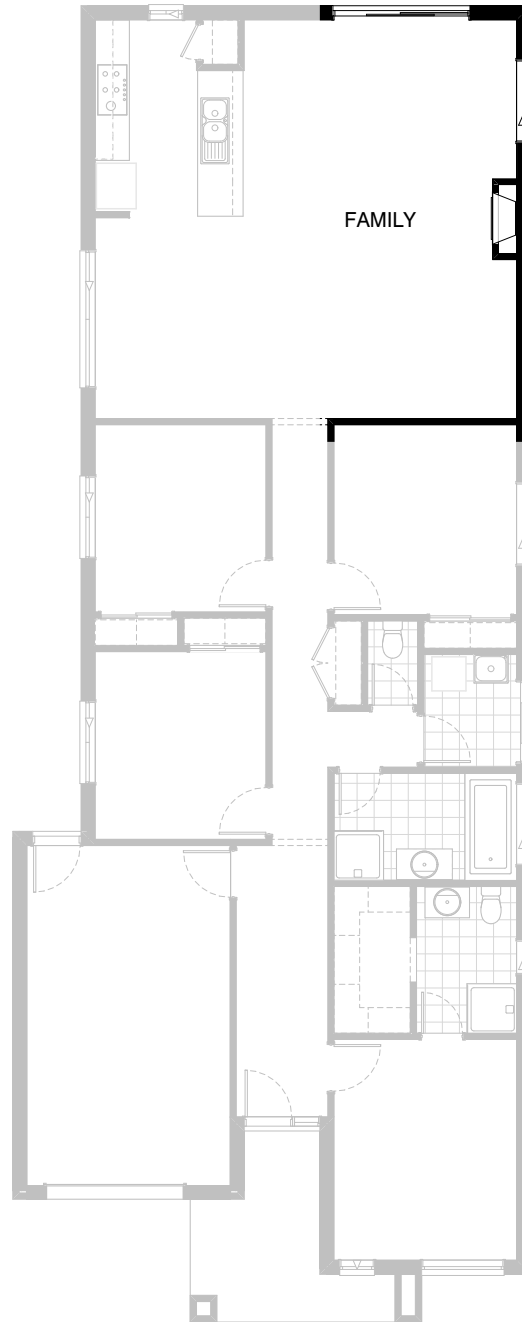


Option 1P1-1

Provide separate Living by deleting walls to Bed 3. Rename Bed 4 to Bed 3 and increase robe with sliding doors to robe. Provide ASW2015 sliding aluminium window in lieu of ASW1215.

FLOORPLAN OPTIONS




 **4**  **2**  **1**

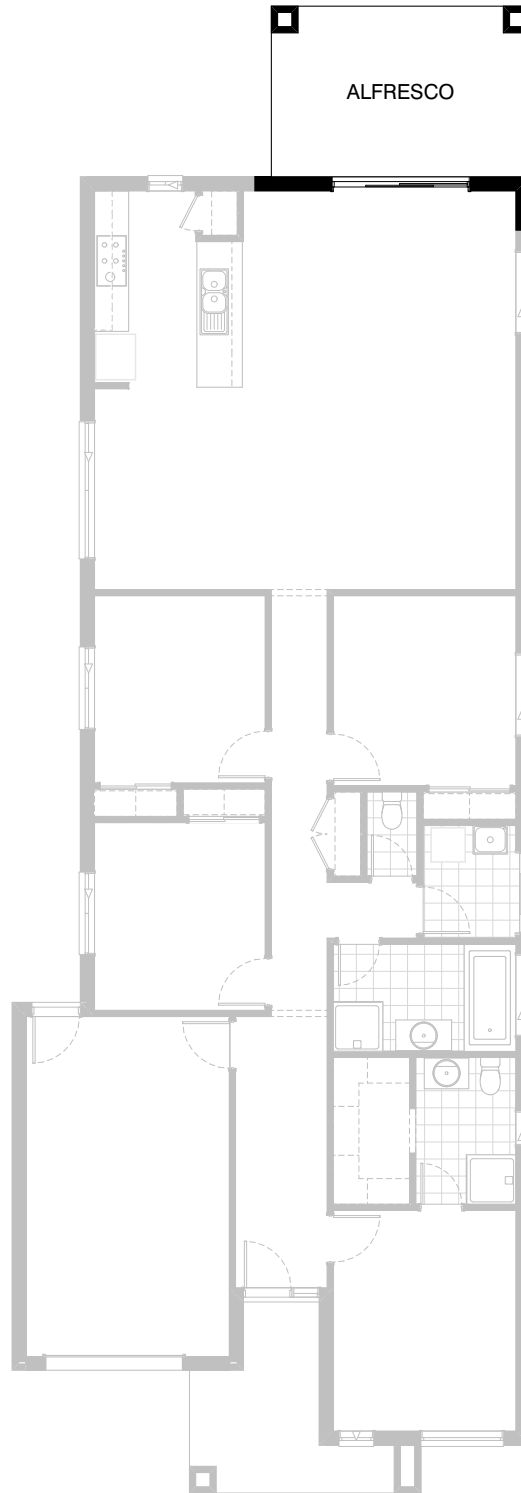


Option 1P1-2

Provide Jetmaster SL-350 gas fireplace, 400mm off floor level in a 1400mm x 420mm boxed out plaster wall with a 4 sided black fascia to Family room side wall and relocate Family window by 360mm to suit.

FLOORPLAN OPTIONS




 **4**  **2**  **1**

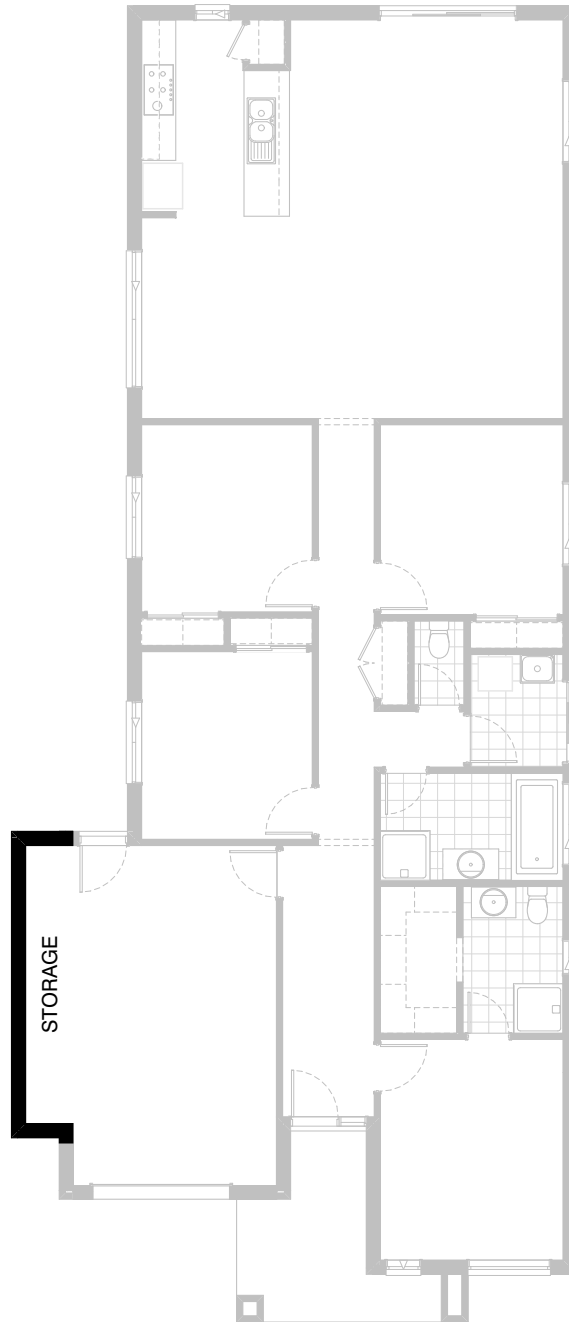


Option EP1-1

Provide Alfresco under dwelling roof line to rear of Family room including structural concrete floor, light point and 2no. 470mm x 470mm brick piers.
Increases area by 13.65m².
Increases width by 3000mm.

FLOORPLAN OPTIONS




 **4**  **2**  **1**

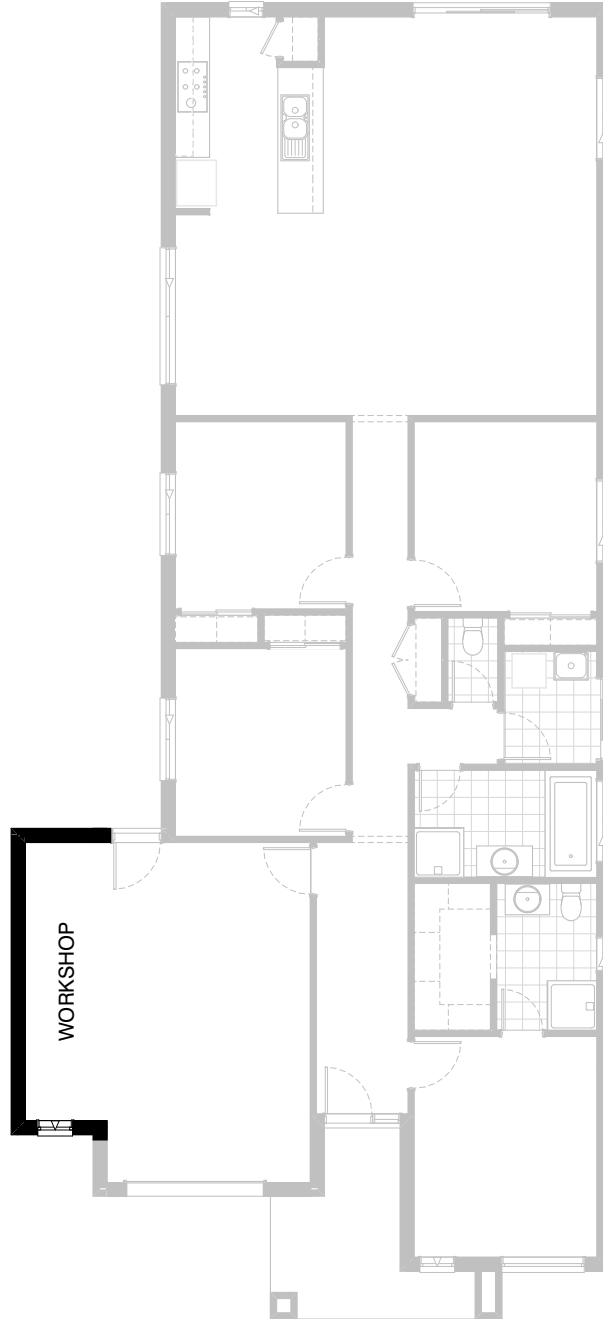


Option G-1

Provide extension to Garage to create additional Storage area.
Increases area by 4.53m².
Increases width by 840mm.

FLOORPLAN OPTIONS

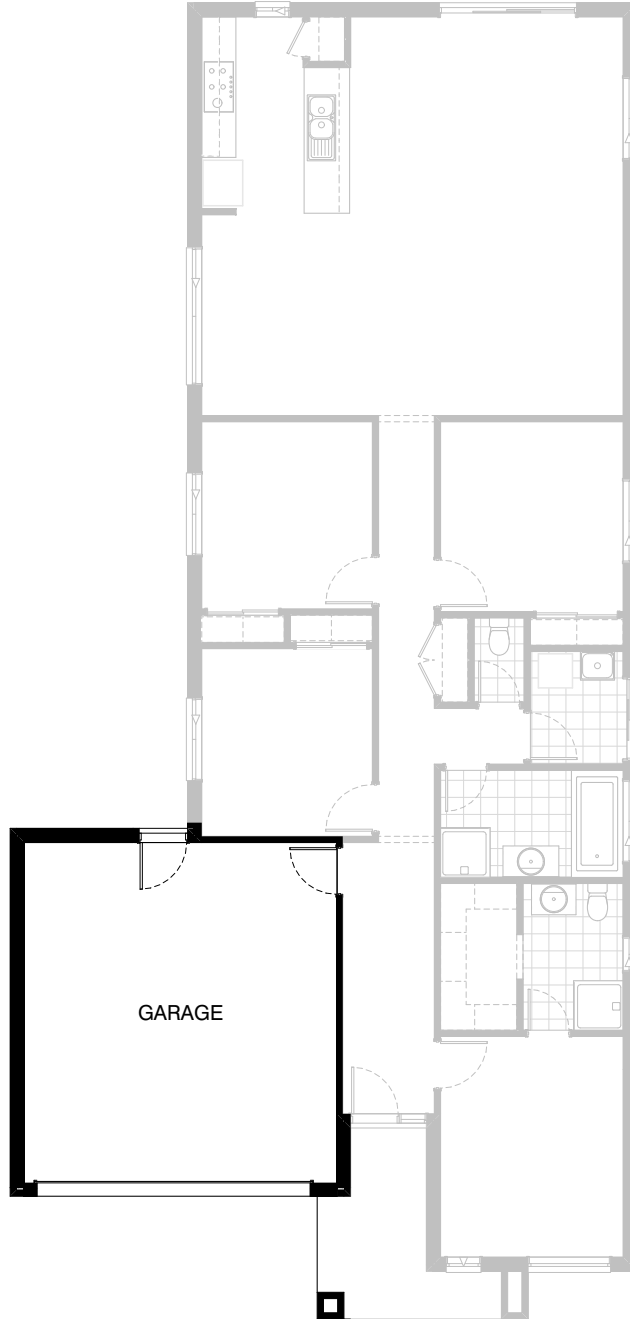
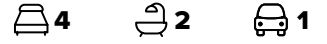
 **4**  **2**  **1**



Option G-2

Provide extension to Garage to create Workshop area including additional 2057 x 610 aluminium awning window. Increases area by 7.76m². Increases width by 1440mm.

FLOORPLAN OPTIONS



Option G-3

Provide double car Garage including larger
Garage door to suit.

NOTE:- Reduce Porch width by 240mm to
New Blake facade due to double garage door width.
Increases area by 12.42m².
Increases width by 1920mm.