

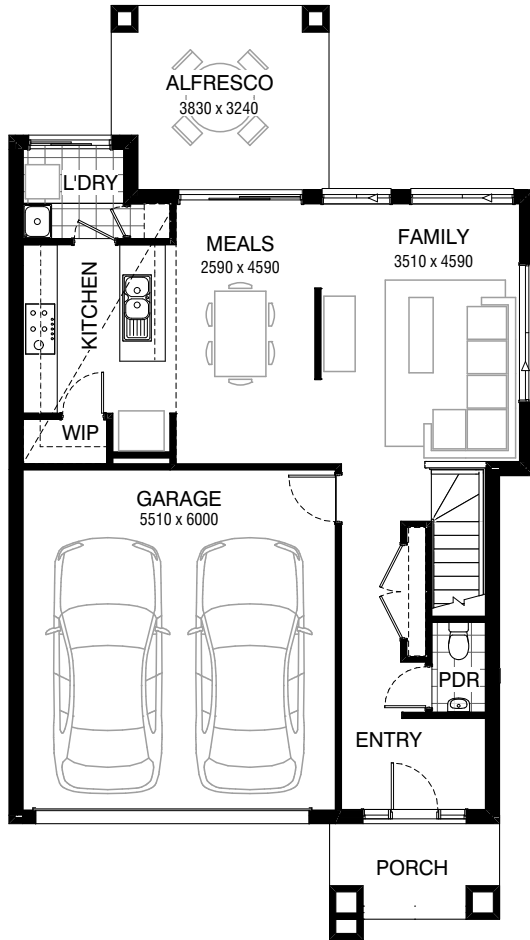
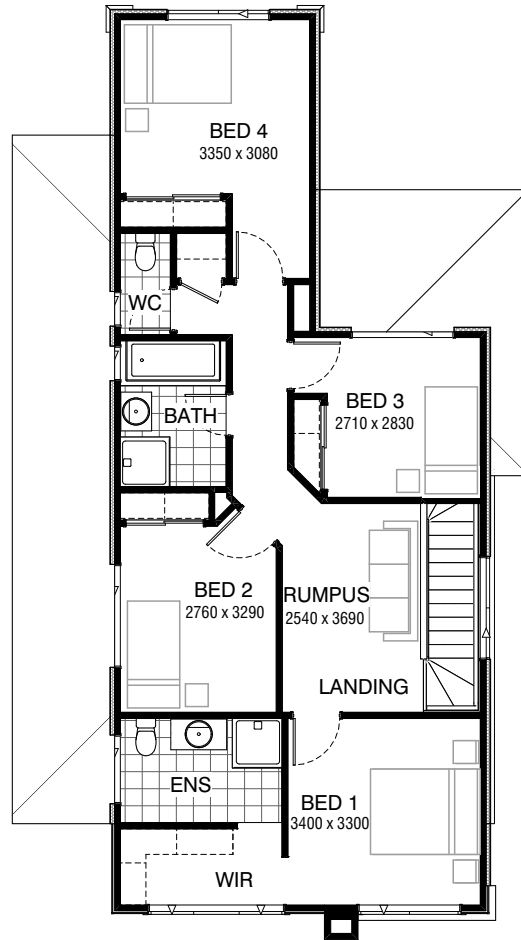


Total squares **22.1sq**

 **4**  **2.5**  **2**



GROUND FLOOR



FIRST FLOOR

FLOORPLAN OPTIONS

All available ready-to-go floorplan options for this design can be viewed on the following pages, or visit www.burbank.com.au.

Facades available:

Condor, Matisse, Monet

Overall home width 9.23m

Overall home length 16.43m




Residence	152.1m ²	16.4sq
Garage	35.8m ²	3.9sq
Porch	5.2m ²	0.6sq
Alfresco	12.0m ²	1.3sq
Total	205.1m²	22.1sq

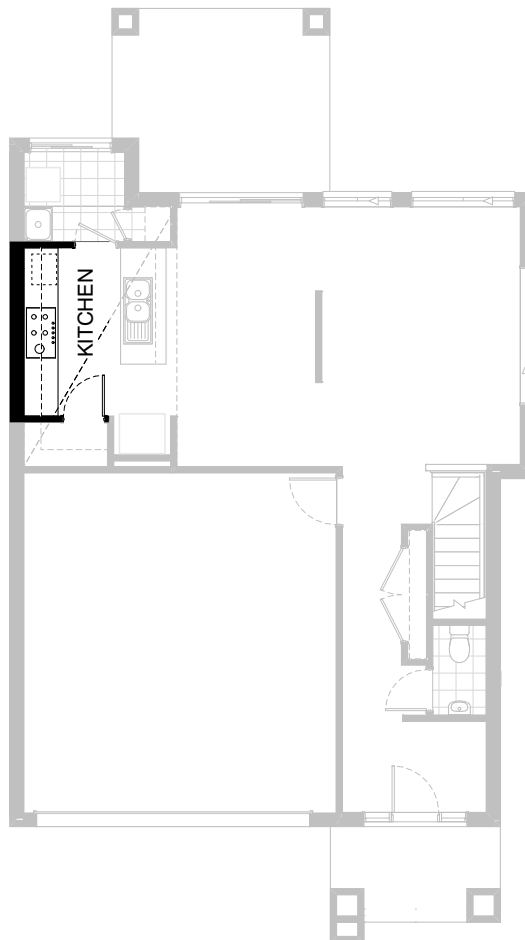
Listed details based on Condor façade floorplan (illustrated)

*Copyright conditions. All photos and illustrations are representative only. Floor plans and specifications may be varied by Burbank without notice, the dimensions are diagrammatic only and a Building Contract with final drawings will display correct dimensions and detail. All designs are the property of Burbank and must not be used, reproduced, copied or varied, wholly or in part without written permission from an authorised Burbank representative. Copyright Burbank Australia Pty Ltd. ABN 91 007 099 872. Builders Registration Number CDB-U-52603.

Call 13 BURBANK
Visit burbank.com.au

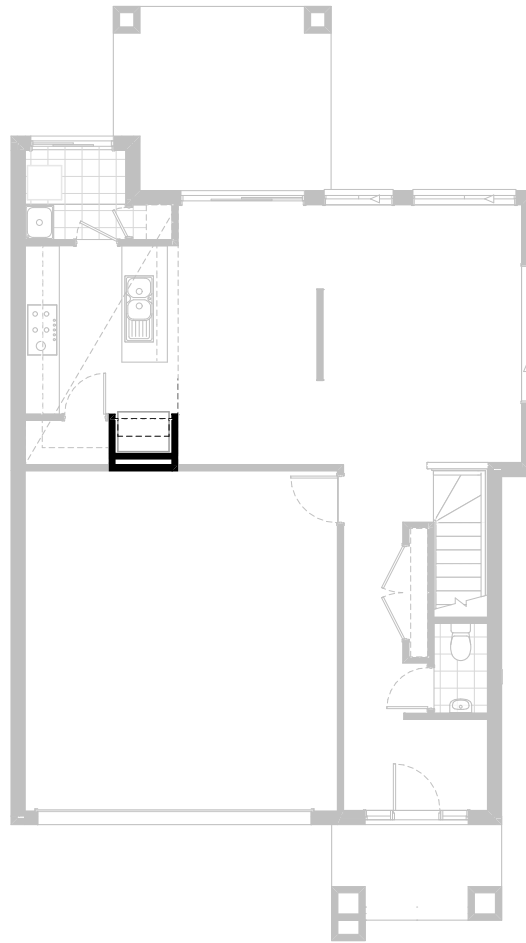
FLOORPLAN OPTIONS

 **4**  **2.5**  **2**



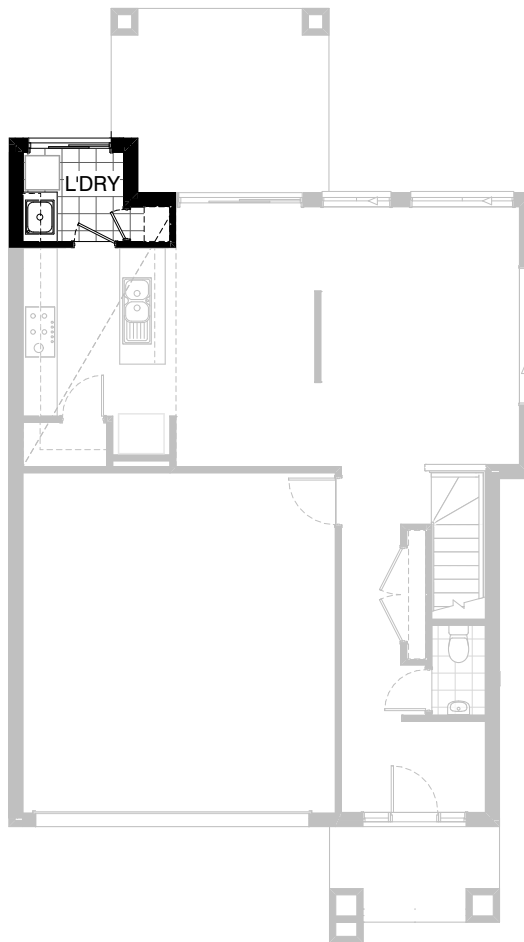
Option K-1

- Provide Kitchen upgrade with:
- 1no. MW provision with pot draw,
 - 2no. 350mm base cabinets,
 - 1no 900mm underbench oven with retractable rangehood,
 - 1no 900mm cooktop,
 - 1no. 600mm base cabinet,
 - 2no. 600mm overhead cupboards,
 - 2no 350mm overheads cupboard,
 - 1no 450mm drawer,
 - 1no. 900mm base cabinet,
 - 1no DW provision.



Option K-2




Provide Kitchen Upgrade with laminated open shelf above refrigerator space,

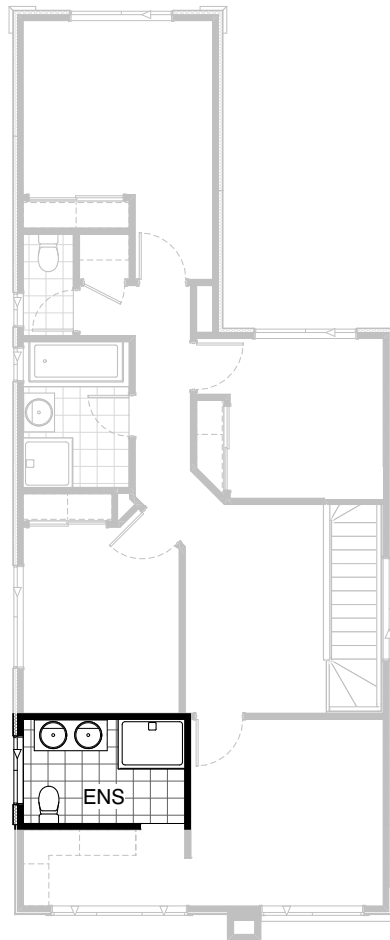


Option LD-1

Provide Laundry upgrade with:
1no. 800mm base cabinet,
1no. 800mm overhead cupboard
adjust tiled splashback and bench top to suit.

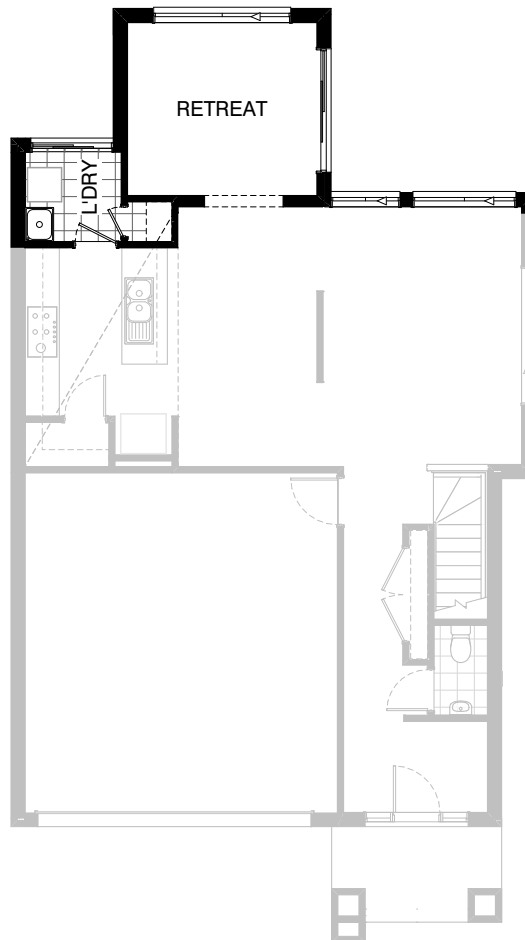
FLOORPLAN OPTIONS

 **4**  **2.5**  **2**



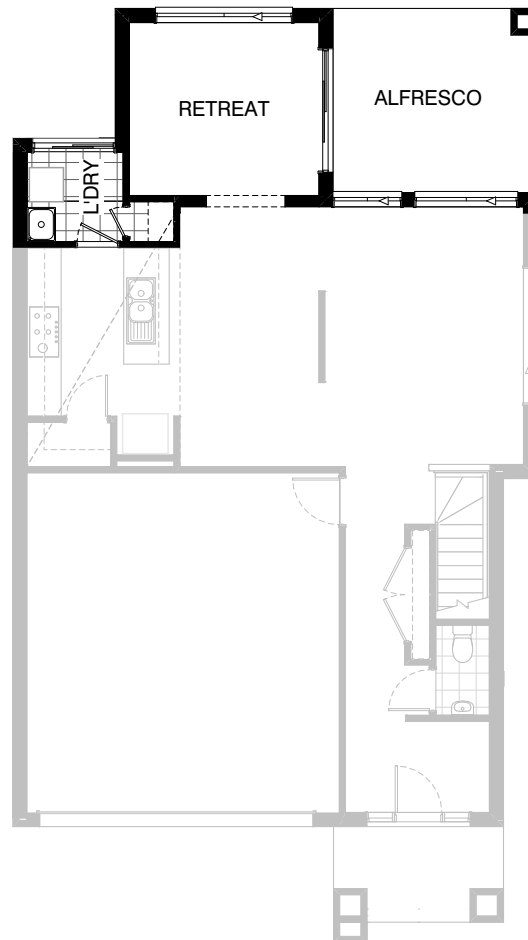
Option ENS-1

Provide Ensuite Option with
1200mm x 900mm polymarble shower base
1282mm vanity unit with 2no. basins



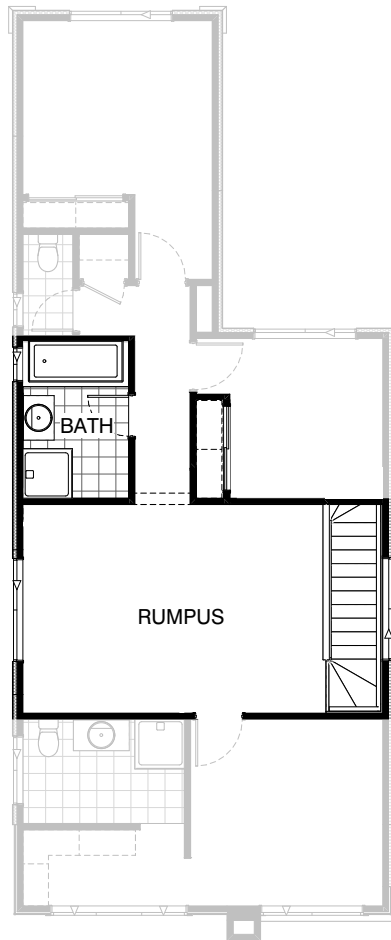
Option IP1-1 GF

Provide retreat option in lieu of standard alfresco.
Relocate window in family area over by 120mm,
Relocate 1no sliding door from meals area to retreat area,
Provide 1no. 514mm x 2410mm aluminium sliding window,
Increase the depth of linen cupboard within laundry by 80mm.



Option IP1-2 GF

Provide retreat & alfresco option in lieu of standard.
Relocate window in family area over by 120mm,
Relocate 1no sliding door from meals area to retreat area.
1no. 514mm x 2410mm aluminium sliding window
Increase the depth of linen cupboard within laundry by 80mm
Note - Only suitable for a 22m deep block to comply with SLHC POS



Option IP1-3 FF

Provide larger rumpus option by removing bedroom 2.
Remove all splay walls and adjust bed 3 robe.
adjust window in rumpus by 120mm
Increase width of bathroom by 290mm