

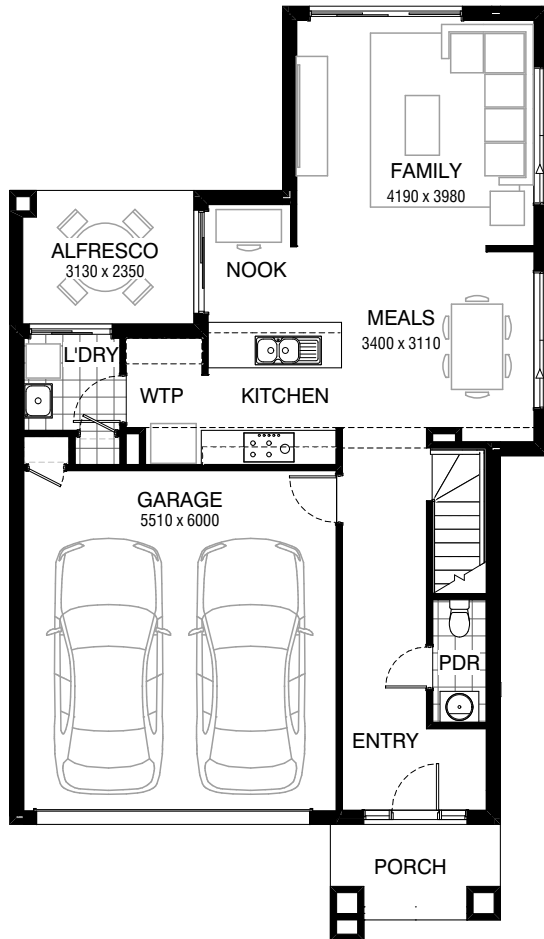
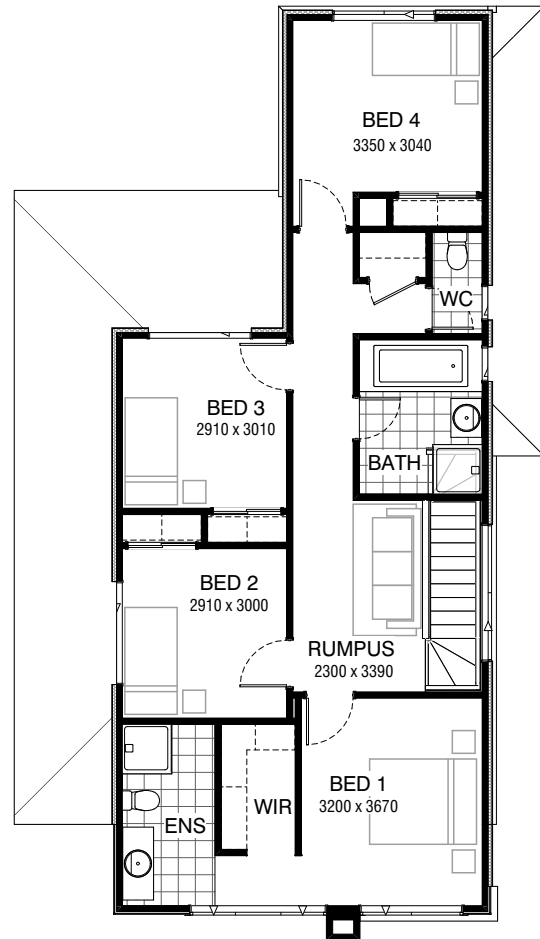


Total squares **22.3sq**

 **4**  **2.5**  **2**



GROUND FLOOR



FIRST FLOOR

**FLOORPLAN OPTIONS**

All available ready-to-go floorplan options for this design can be viewed on the following pages, or visit [www.burbank.com.au](http://www.burbank.com.au).

**Facades available:**

Condor, Matisse, Monet

**Overall home width 9.47m**

**Overall home length 16.43m**




Residence	158.3m <sup>2</sup>	17.0sq
Garage	35.8m <sup>2</sup>	3.9sq
Porch	5.2m <sup>2</sup>	0.6sq
Alfresco	7.6m <sup>2</sup>	0.8sq
<b>Total</b>	<b>207.0m<sup>2</sup></b>	<b>22.3sq</b>

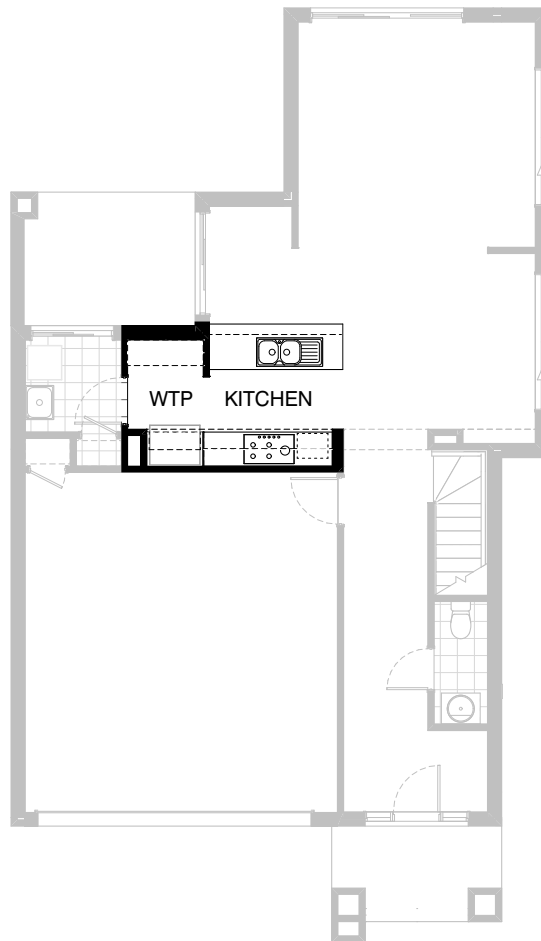
Listed details based on Condor façade floorplan (illustrated)

\*Copyright conditions. All photos and illustrations are representative only. Floor plans and specifications may be varied by Burbank without notice, the dimensions are diagrammatic only and a Building Contract with final drawings will display correct dimensions and detail. All designs are the property of Burbank and must not be used, reproduced, copied or varied, wholly or in part without written permission from an authorised Burbank representative. Copyright Burbank Australia Pty Ltd. ABN 91 007 099 872. Builders Registration Number CDB-U-52603.

**Call 13 BURBANK**  
**Visit [burbank.com.au](http://burbank.com.au)**

FLOORPLAN OPTIONS

 **4**     **2.5**     **2**

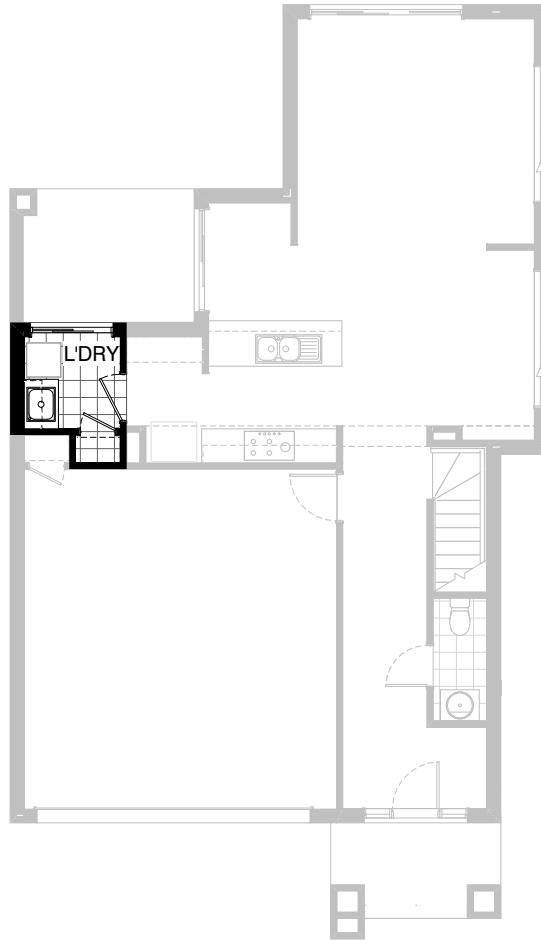


**Option K-1**

- Provide Kitchen upgrade with:
- 1no. MW provision with pot draw,
  - 1no 900mm underbench oven with retractable rangehood,
    - 1no 900mm cooktop,
    - 1no. 700mm base cabinet,
    - 1no. 700mm overhead cupboard,
    - 1no. 600mm overhead cupboard,
  - 1no. laminated open shelf above refrigerator space,
    - 1no dw provision,
  - 1no. 900mm base cabinet with 1no. double bowl sink with drainer,
    - 1no. 300mm base cabinet,
    - 1no 450mm drawer,
- additional tiled splashback and bench top to suit.

Total squares **22.3sq**




 **4**  **2.5**  **2**

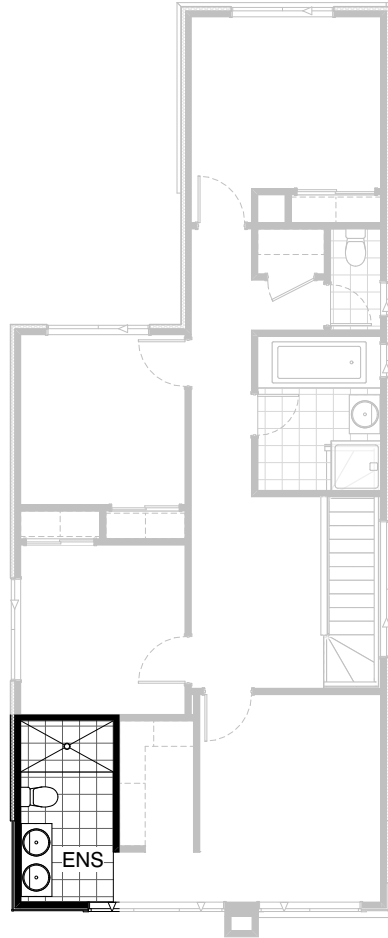


### Option LD-1

Provide Laundry upgrade with:  
1no. 800mm base cabinet,  
1no. 800mm overhead cupboard  
adjust tiled splashback and bench top to suit.

Total squares **22.3sq**




 **4**  **2.5**  **2**

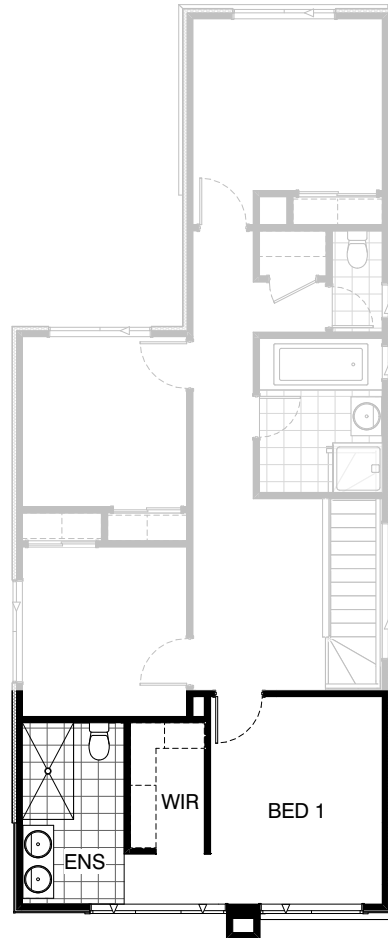


### Option ENS-1 FF

Provide Ensuite Option with  
1630mm x 900mm tiled shower base  
1282mm vanity unit with 2no. basins

Total squares **22.3sq**

 **4**  **2.5**  **2**

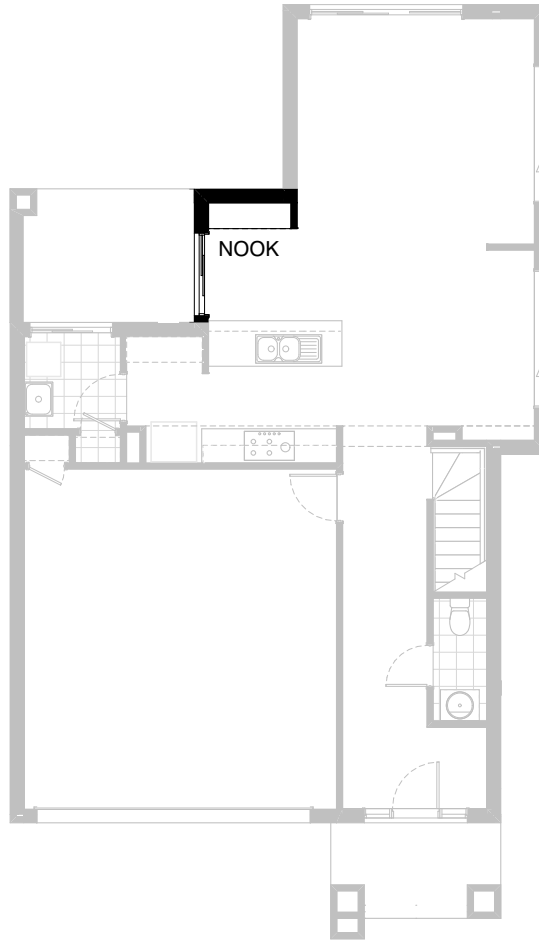


### Option ENS-2 FF

Provide Ensuite Option by  
Decreasing width of Bed 1 by 160mm,  
Move WIR over by 160mm and increase the ensuite by 160mm  
1no. 1700mm x 900mm tiled shower base  
1282mm vanity unit with 2no. basins

Total squares **22.3sq**




 **4**  **2.5**  **2**

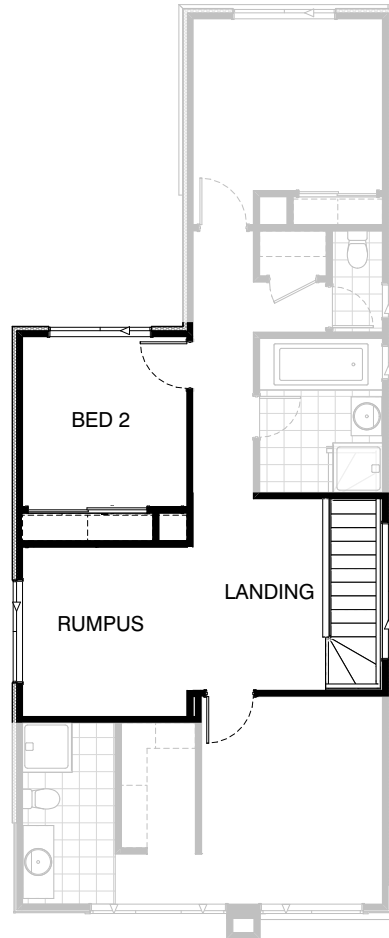


### Option IP1-1

Provide desk option to nook area with  
300mm Deep plaster bulkhead  
1no 450mm wide drawer unit,  
32mm lmainated bench top 1450mm wide  
Provide 1no. 1450mm x 2110mm aluminium sliding door in lieu of standard

Total squares **22.3sq**

 **4**  **2.5**  **2**



### Option IP1-2 FF

Provide First Floor option by removing Bed 2 and replace with Rumpus area

Increase width of bed 2 robe and adjust shelving to suit