


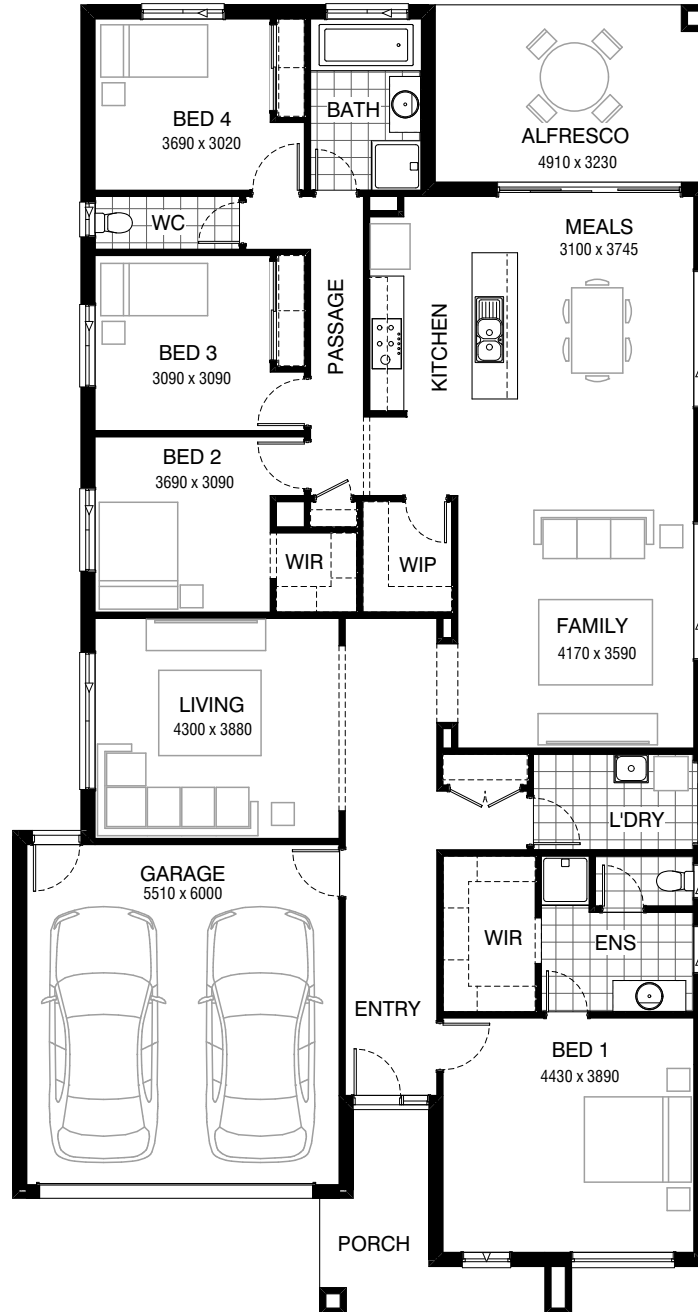


Total squares **27.0sq**

 **4**  **2**  **2**



FLOORPLAN OPTIONS

All available ready-to-go floorplan options for this design can be viewed on the following pages, or visit www.burbank.com.au.

Facades available:

Drysdale, Arkley, Haring	
Dowd, Nolan	
Overall home width	12.23m
Overall home length	23.03m




Residence	191.6m ²	20.6sq
Garage	36.5m ²	3.9sq
Porch	8.1m ²	0.9sq
Alfresco	15.0m ²	1.6sq
Total	251.2m²	27.0sq

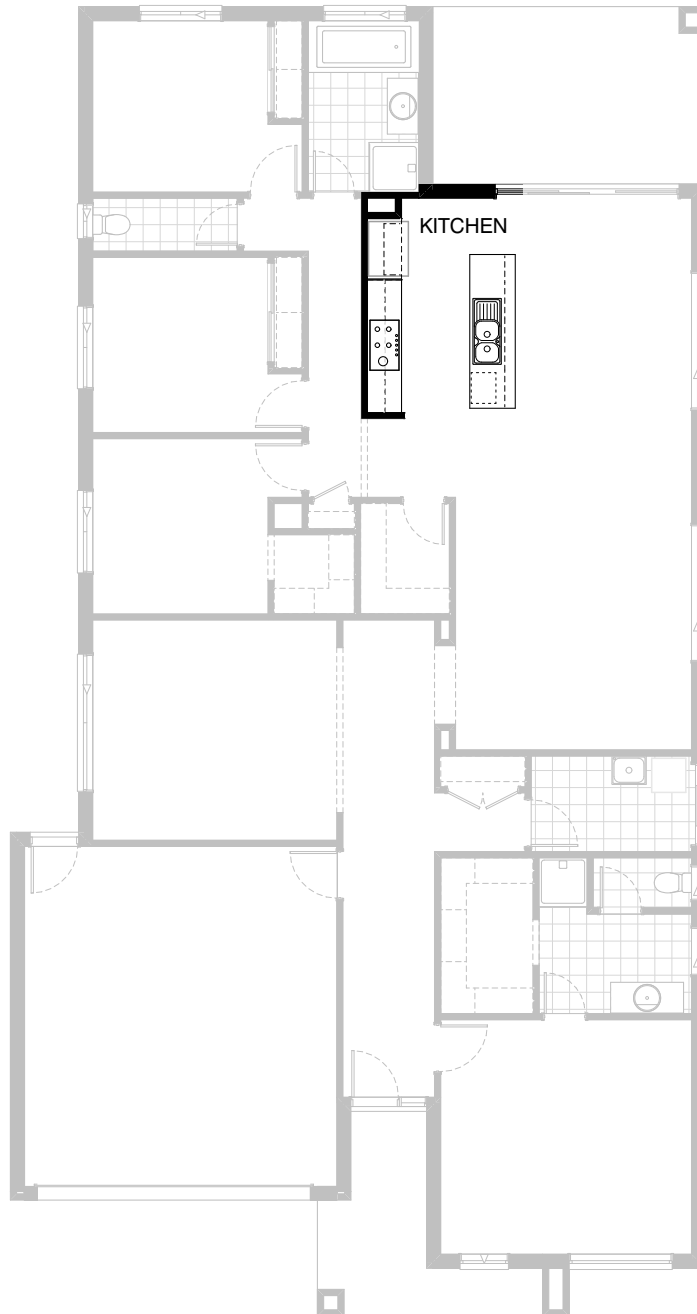
Listed details based on Drysdale façade floorplan (illustrated)

*Copyright conditions. All photos and illustrations are representative only. Floor plans and specifications may be varied by Burbank without notice, the dimensions are diagrammatic only and a Building Contract with final drawings will display correct dimensions and detail. All designs are the property of Burbank and must not be used, reproduced, copied or varied, wholly or in part without written permission from an authorised Burbank representative. Copyright Burbank Australia Pty Ltd. ABN 91 007 099 872. Builders Registration Number CDB-U-52603.

Call 13 BURBANK
Visit burbank.com.au

FLOORPLAN OPTIONS




 **4**  **2**  **2**

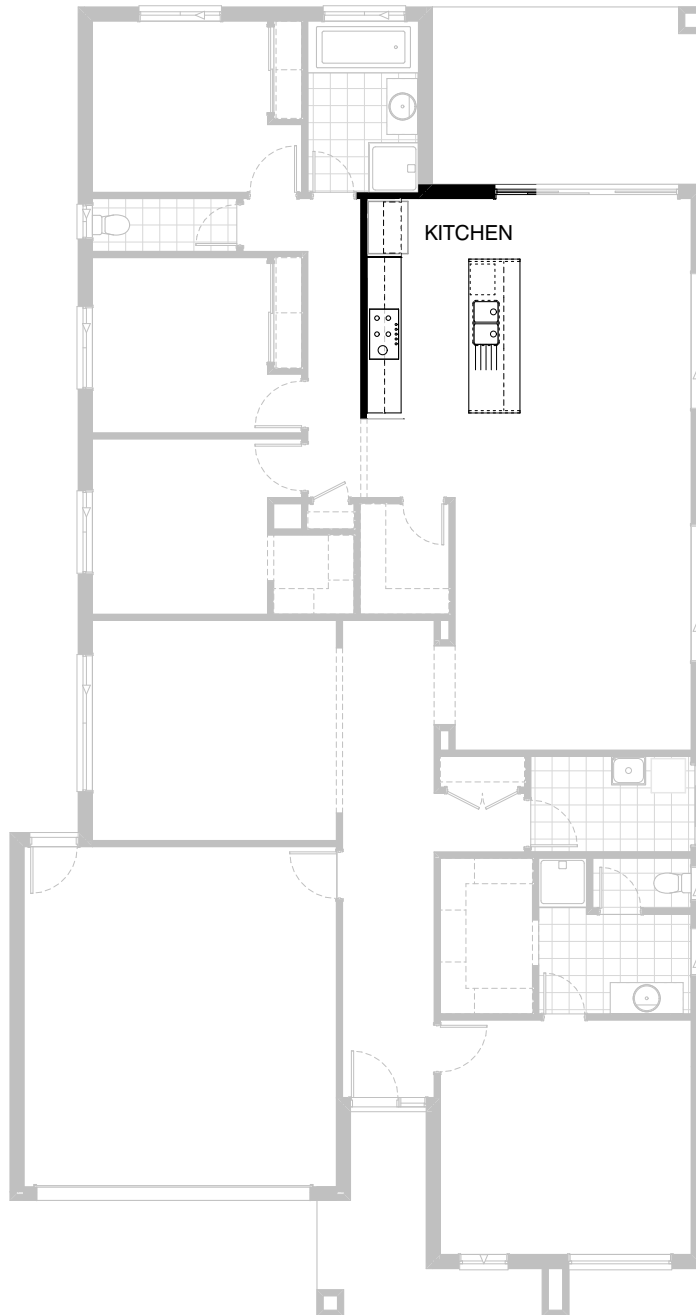


Option K-1

Provide Kitchen upgrade with 1no. laminated open shelf above refrigerator space,
2no. 600mm overhead cupboards, 1no. laminated DW provision,
1no. laminated MW provision with pot drawer below,
1no. 450mm drawers, 1no. 900mm base cupboards,
2no. 700mm base cupboards and additional tiles splashback and bench top to suit.

FLOORPLAN OPTIONS



 **4**  **2**  **2**



Option K-2

Provide Kitchen option with glass splashback,
undermount sink with drainage grooves in benchtop,
1no. laminated open shelf above refrigerator space,
2no. 800mm overhead cupboards, 1no. 900mm overhead cupboard with
900mm retractable rangehood, 2no. 900mm pot drawers,
900mm underbench oven with 900mm cooktop.
Provide 40mm stone bench top to island bench
with 40mm waterfall ends, 1no. laminated DW provision,
1no. laminated MW provision with pot drawer below, 1no. 450mm drawers,
1no. 900mm base cupboard with 1no. 900mm base cupboard and
1no. 900mm open shelf to the rear of the servery.

FLOORPLAN OPTIONS




 **4**  **2**  **2**

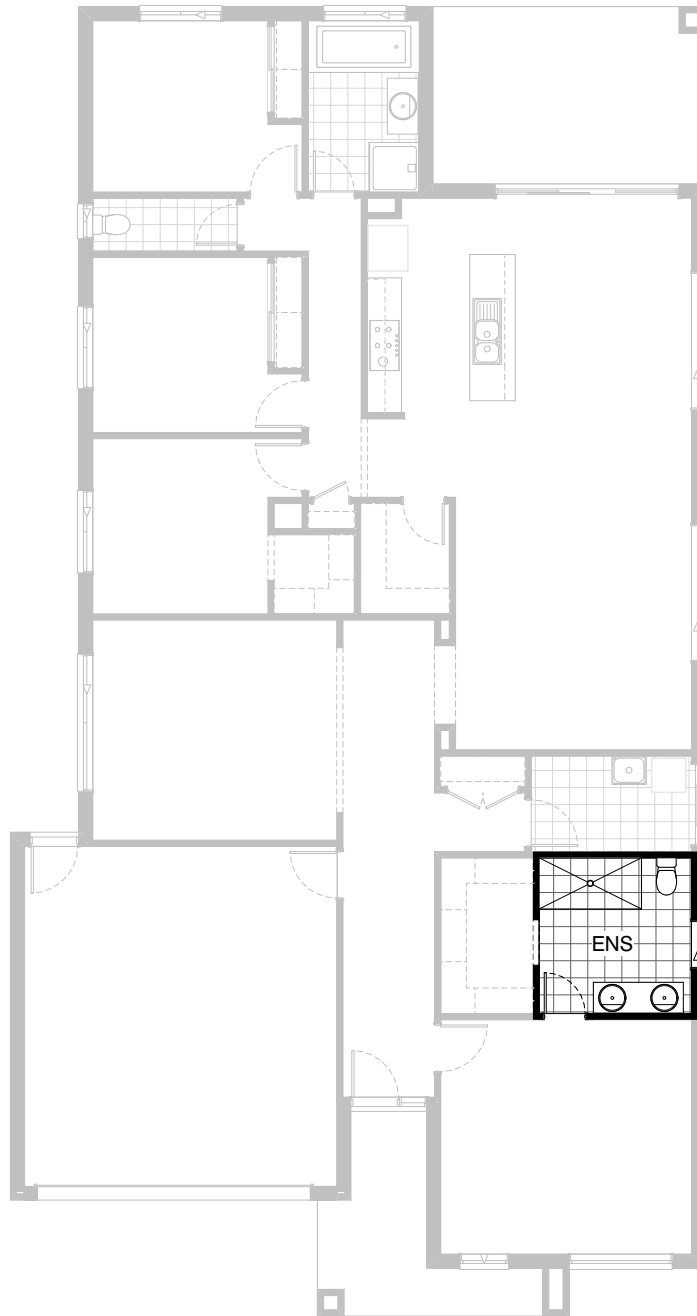


Option LD-1

Provide Laundry upgrade with laminated inset trough,
2no. 800mm base cupboards, 1no. 400mm base cupboard,
2no. 800mm overhead cupboards,
1no. 400mm overhead cupboard and additional tiled
splashback and bench top to suit.

FLOORPLAN OPTIONS

 **4**  **2**  **2**

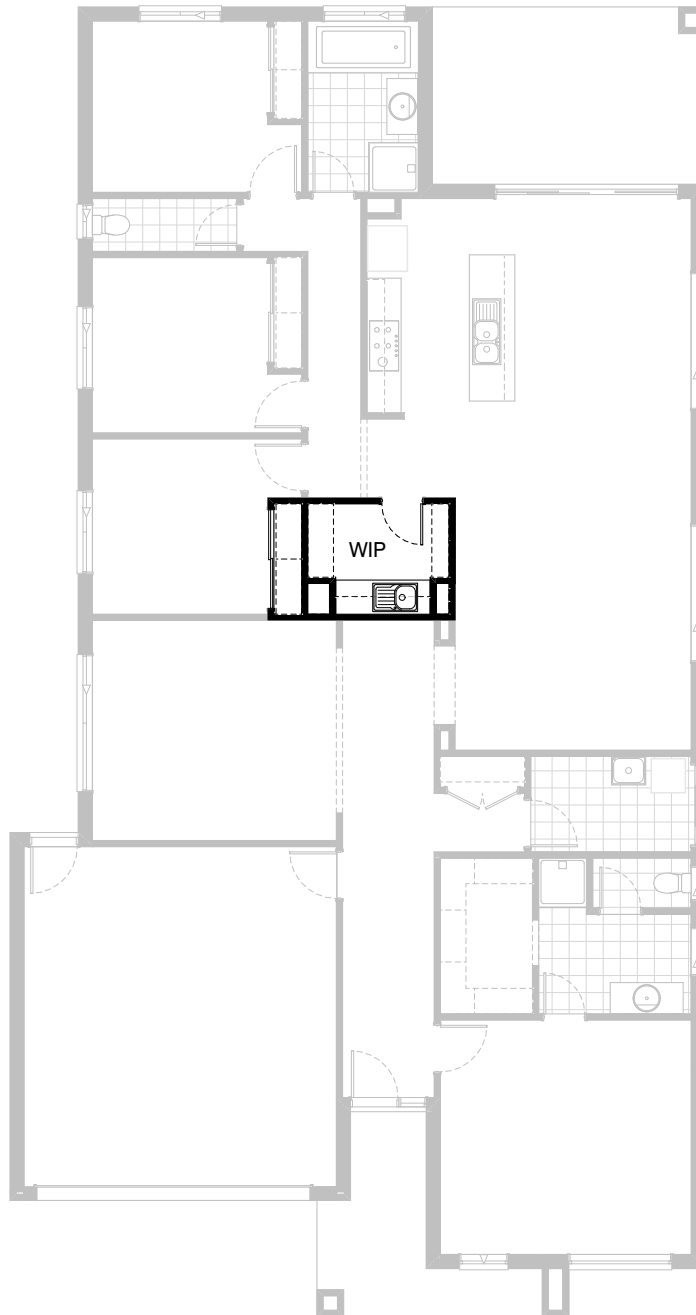


Option ENS-1

Provide Ensuite upgrade by deleting WC including
1no. 720mm hinged door and 1no. 1006mm sliding window.
Provide additional 1no. 900mm x 1800mm tiled shower base
in lieu of 1no. 900mm x 900mm polymarble shower base.
Provide additional 1no. 1582mm wide vanity with 2no. basins
in lieu of standard 1no. 1282mm wide vanity basin and relocate
toilet to suit.

FLOORPLAN OPTIONS


 **4**  **2**  **2**

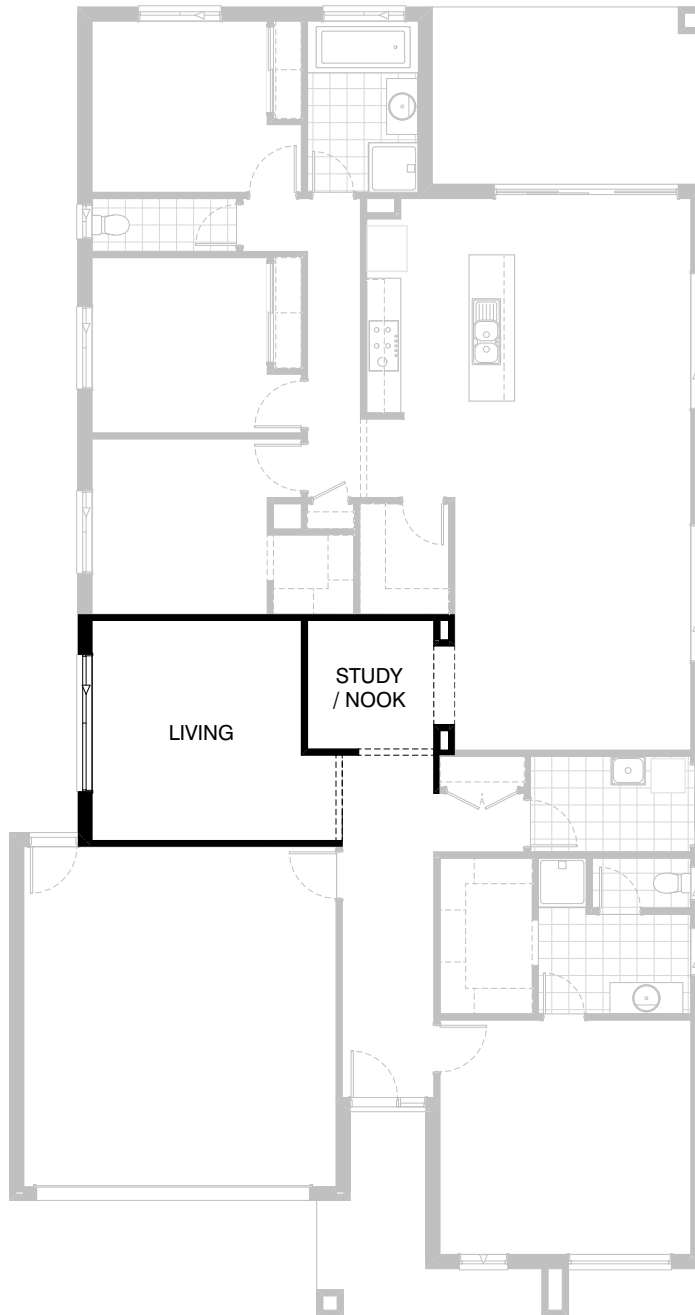


Option IP1-1

Provide WIP upgrade by reducing Bed 2 WIR to standard with Gyprock sliders, remove Broom cupboard and provide 2no. 800mm base cupboards, 2no. 800mm overhead cupboards, additional sink, 1no. 4/300mm deep shelving run, 1no. 4/450mm deep shelving run, 20mm stone bench top, tiled splashback to three sides and additional plaster lined walls to suit.

FLOORPLAN OPTIONS




 **4**  **2**  **2**

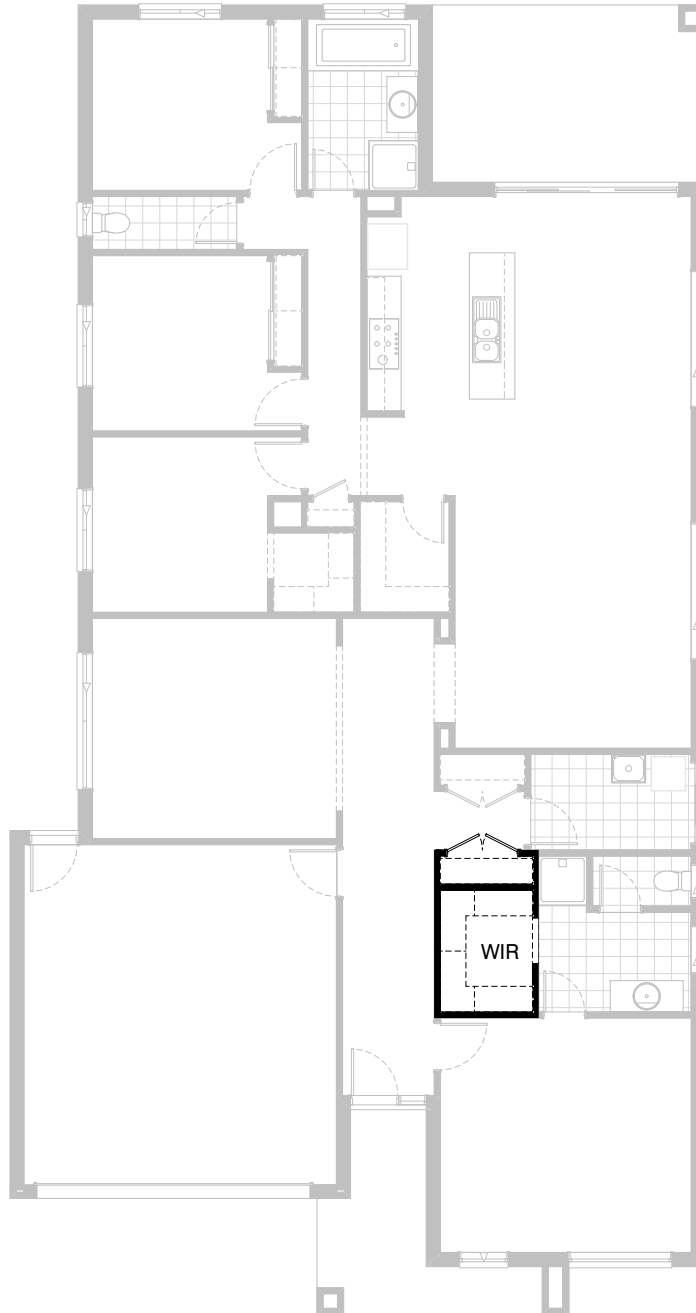


Option IP1-2

Provide Study Nook to Passage area by reducing Living width by 610mm and provide additional site built plaster lined walls and 300mm deep bulkhead to Passage / Study Nook

FLOORPLAN OPTIONS

 **4**  **2**  **2**

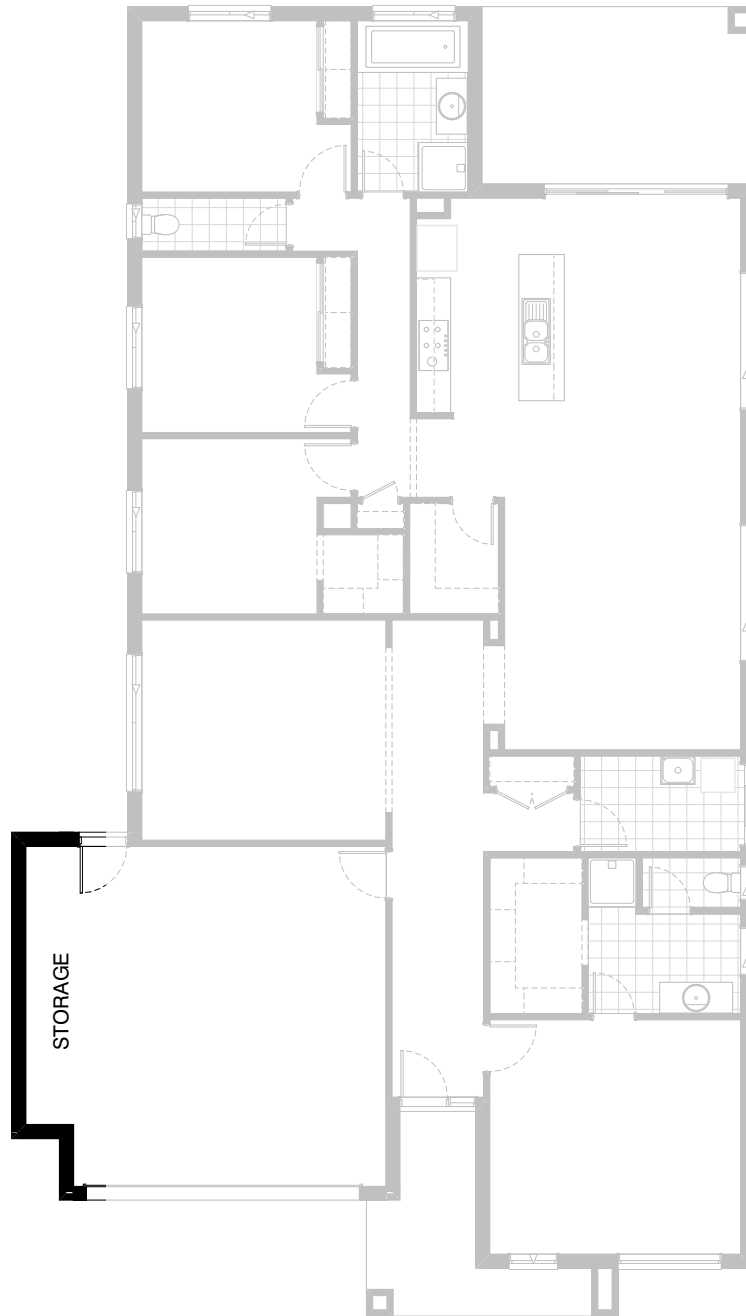


Option IP1-3

Provide additional Coats cupboard with 2no.
620mm flush panel hinged doors and
1no. 450mm shelf / hanging rail and reduce
Walk in robe length by 600mm to suit.

FLOORPLAN OPTIONS

 **4**  **2**  **2**

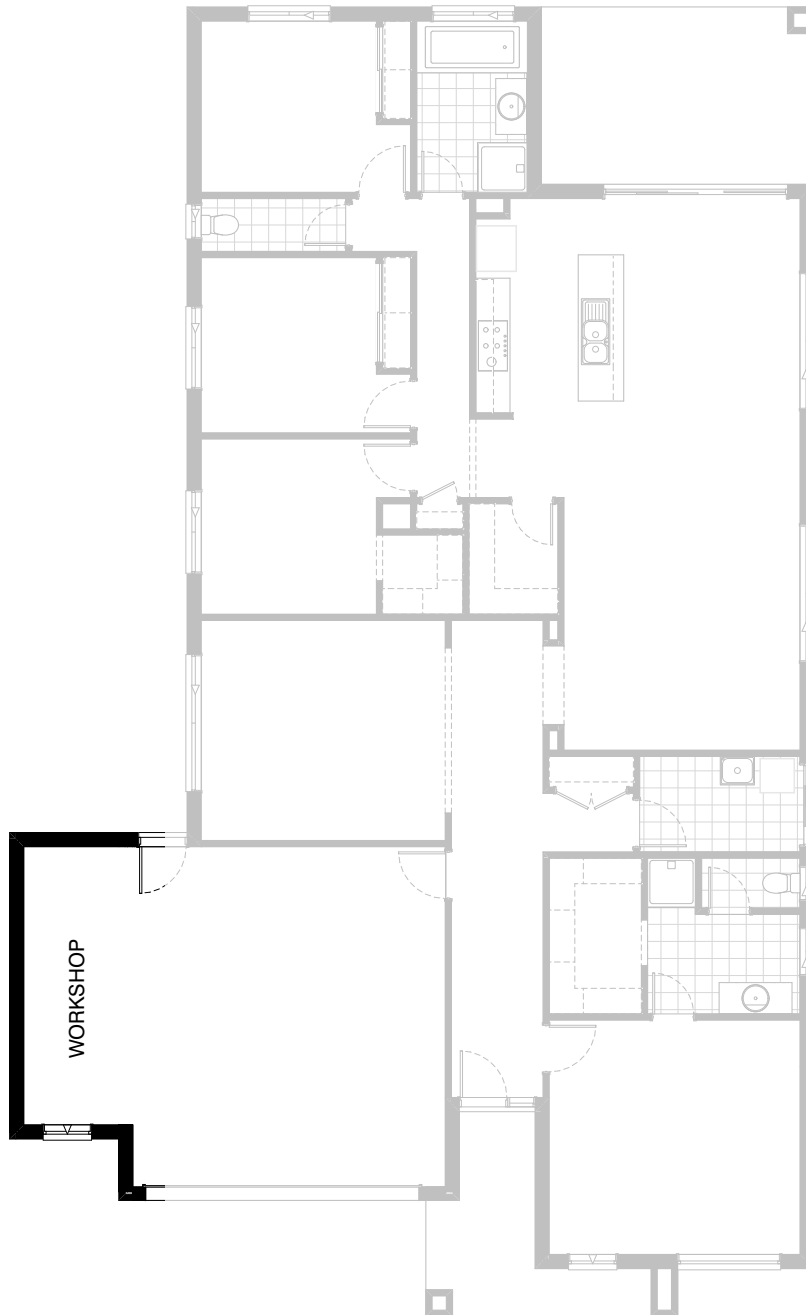


Option G-1

Provide extension to Garage to create additional Storage area.
Increases area by 4.52m².
Increases width by 840mm

FLOORPLAN OPTIONS


 **4**  **2**  **2**

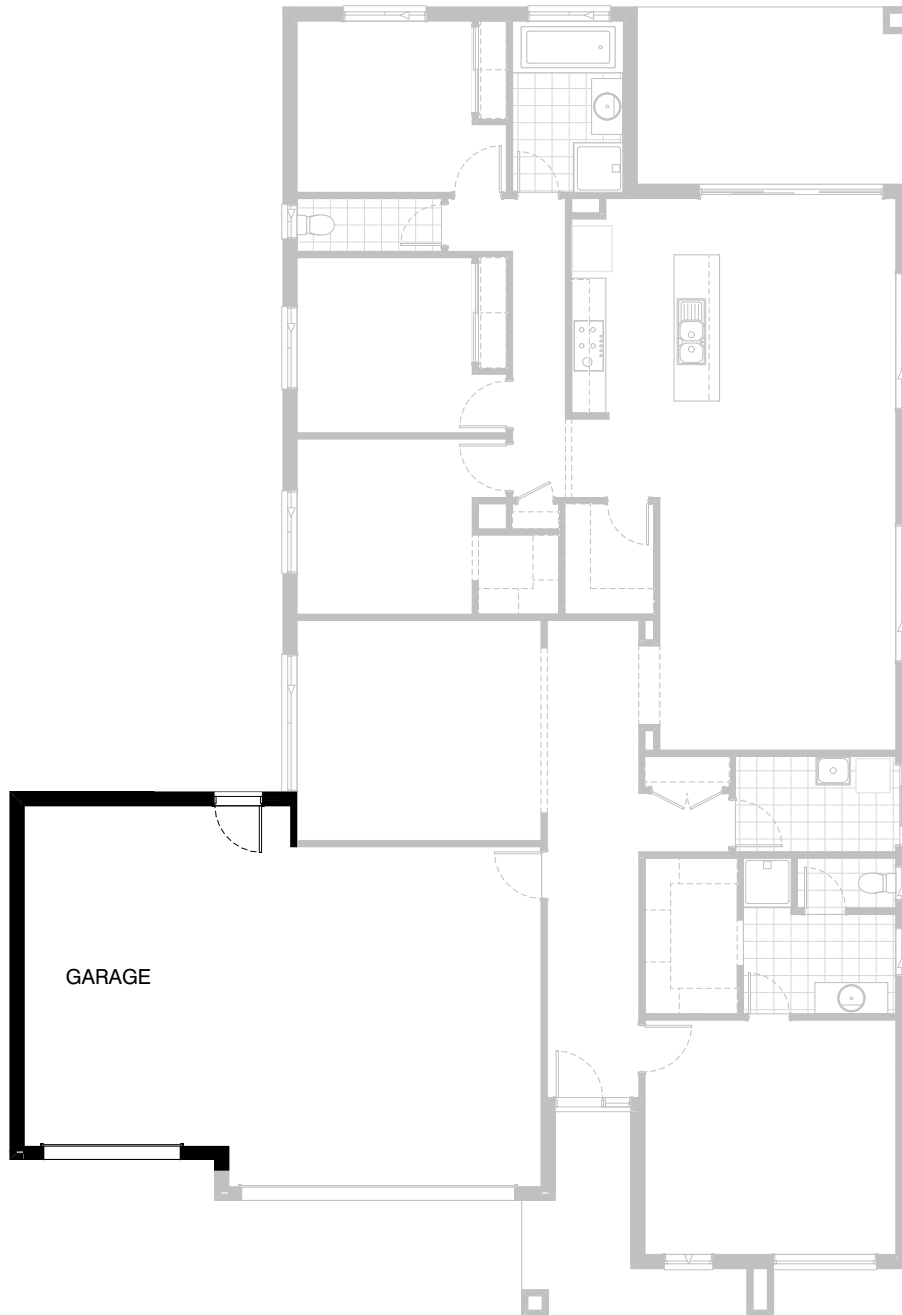


Option G-2

Provide extension to Garage to create Workshop area including additional 2057mm x 850mm aluminium feature awning window. Increases length by 1920mm. Increases area by 10.35m².

FLOORPLAN OPTIONS

 **4**  **2**  **2**



Option G-3

Provide triple car Garage including additional sectional door to front.
Increases area by 24.16m².
Increases width by 3600mm.