




Total squares **25.3sq**

 **4**  **2**  **2**



FLOORPLAN OPTIONS

All available ready-to-go floorplan options for this design can be viewed on the following pages, or visit www.burbank.com.au.

Facades available:

Arkley, Drysdale, Haring

Overall home width 12.59m

Overall home length 20.99m

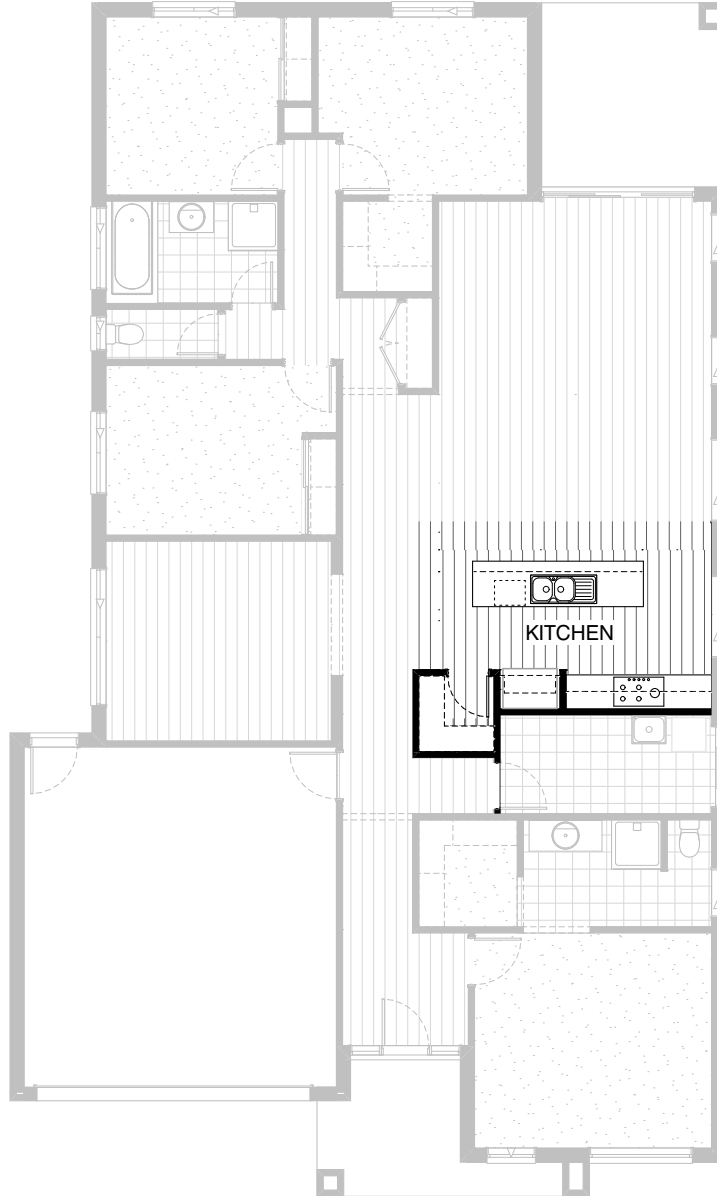
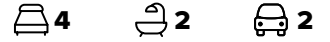
Residence	181.4m ²	19.5sq
Garage	36.3m ²	3.9sq
Porch	7.0m ²	0.8sq
Alfresco	10.5m ²	1.1sq
Total	235.2m²	25.3sq

Listed details based on Drysdale facade floorplan (illustrated)

*Copyright conditions. All photos and illustrations are representative only. Floor plans and specifications may be varied by Burbank without notice, the dimensions are diagrammatic only and a Building Contract with final drawings will display correct dimensions and detail. All designs are the property of Burbank and must not be used, reproduced, copied or varied, wholly or in part without written permission from an authorised Burbank representative. Copyright Burbank Australia Pty Ltd. ABN 91 007 099 872. Builders Registration Number CDB-U-52603.

Call 13 BURBANK
Visit burbank.com.au

FLOORPLAN OPTIONS



**KITCHEN OPTION
STANDARD COLOUR BOARD**

- Provide Kitchen upgrade to include
- Reducing W.I.P 100mm and add 90mm to Kitchen cabinetry and 10mm into Refrigerator space.
- Provide 1no. 900mm base cabinet,
- 1no. 300mm base cabinet,
- 1no. 632mm MW provision with pot drawer below,
- 1no. 450mm four drawer to island,
- Provide 2no. 800mm overhead cabinets,
- 2no. 800mm base cabinets,
- 1no. 900mm underbench over with 900mm hotplate
- 1no. 900mm retractable rangehood concealed within carcass,
- Laminated open shelf above refrigerator space.
- Option contains standard specification

FLOORPLAN OPTIONS



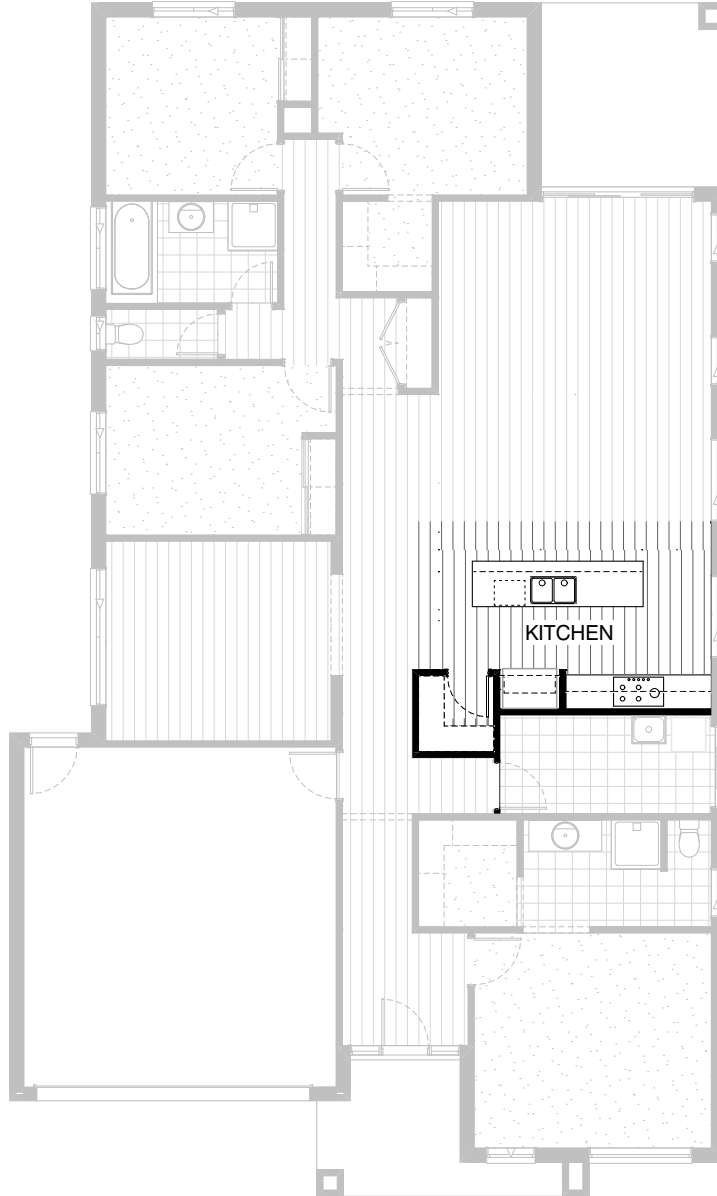
4



2



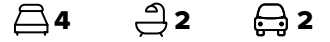
2



KITCHEN OPTION UPGRADE COLOUR BOARD

- Provide Kitchen upgrade to include
- Reducing W.I.P 100mm and add 90mm to Kitchen cabinetry and 10mm into Refrigerator space.
 - Provide 1no. 900mm base cabinet,
 - 1no. 300mm base cabinet,
 - 1no. 632mm MW provision with pot drawer below,
 - 1no. 450mm four drawer to island,
 - Provide 2no. 800mm overhead cabinets,
 - 2no. 800mm base cabinets,
 - 1no. 900mm underbench over with 900mm hotplate
 - 1no. 900mm retractable rangehood concealed within carcass,
 - Laminated open shelf above refrigerator space.
- Option provides upgrade specification

FLOORPLAN OPTIONS

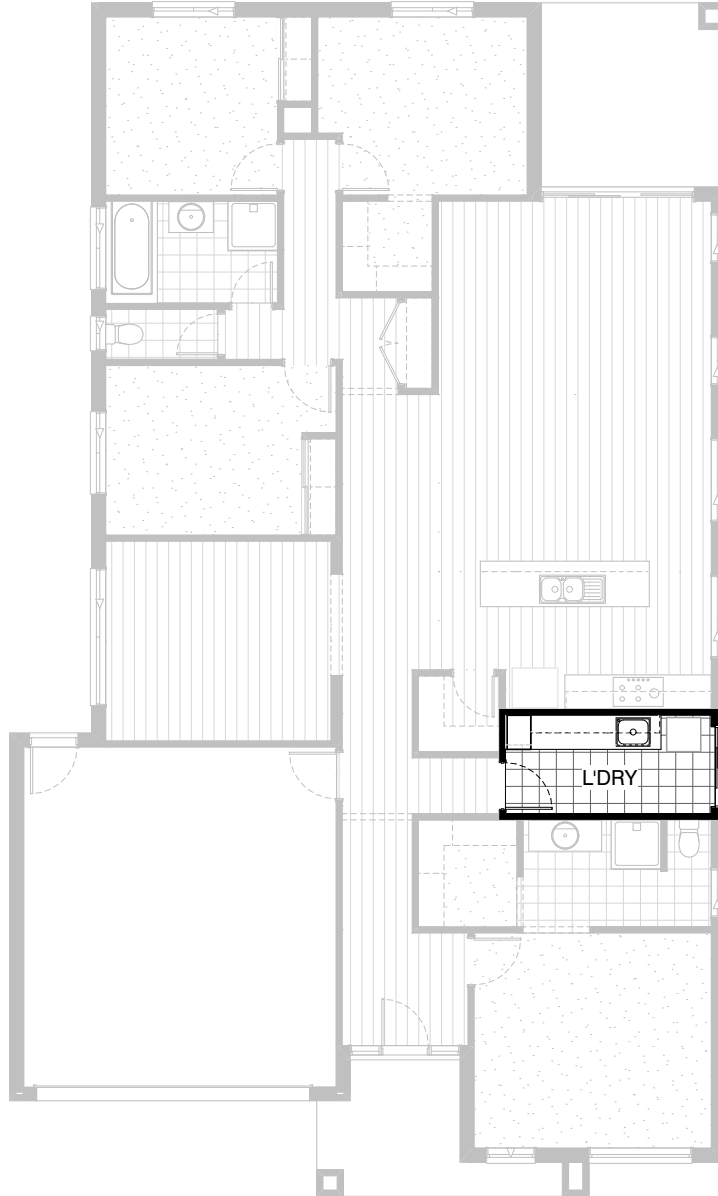


LAUNDRY OPTION STANDARD COLOUR BOARD

Provide Laundry Option with additional
400mm laminate broom cupboard,
1no. 450mm base cupboard,
2no. 900mm base cupboards,
1no. 450mm overhead cupboard,
2no. 900mm overhead cupboards with additional
tiled splashback and bench top to suit.
Option contains standard specification

FLOORPLAN OPTIONS

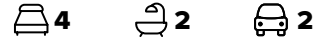
 **4**  **2**  **2**



**LAUNDRY OPTION
UPGRADE COLOUR BOARD**

Provide Laundry Option with additional
400mm laminate broom cupboard,
1no. 450mm base cupboard,
2no. 900mm base cupboards,
1no. 450mm overhead cupboard,
2no. 900mm overhead cupboards with additional
tiled splashback and bench top to suit.
Option provides upgrade specification

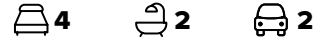
FLOORPLAN OPTIONS



**ENSUITE OPTION
STANDARD COLOUR BOARD**

Provide Ensuite Option with
1200mm x 900mm polymarble shower base I.L.O
900mm x 900mm polymarble shower base
Remove plaster nib wall between shower and WC.
Relocate WC and provide 1582mm wide vanity unit with
2no. basins I.L.O 1282mm wide vanity unit.
Provide 1027mm x 610mm sliding window
I.L.O 1800mm x 850mm sliding window
Option contains standard specification




FLOORPLAN OPTIONS

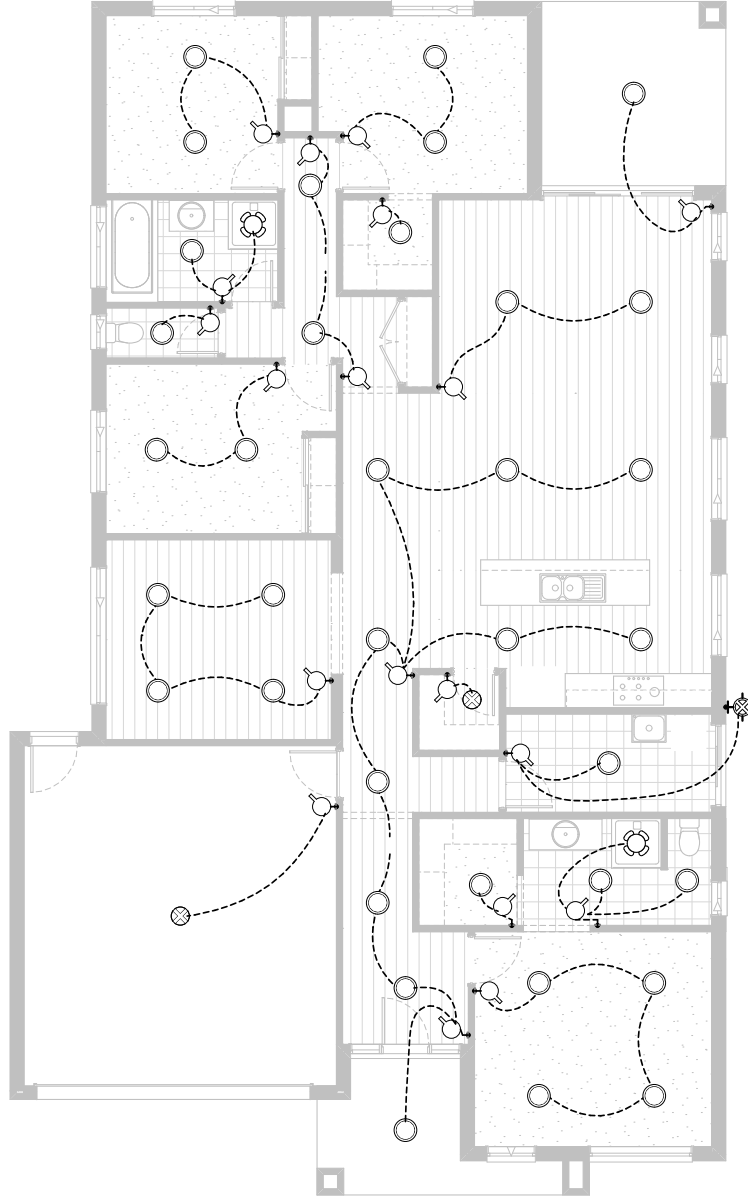


ENSUITE OPTION UPGRADE COLOUR BOARD

Provide Ensuite Option with
1500mm x 900mm tiled shower base with 300mm x 600mm
tiled niche I.L.O 900mm x 900mm polymarble shower base.
Remove plaster nib wall between shower and WC.
Relocate WC and provide 1582mm wide vanity unit with 2no. basins
I.L.O 1282mm wide vanity unit.
Provide 1027mm x 610mm sliding window
inlieu of 1800mm x 850mm sliding window.
Option provides upgrade specification

FLOORPLAN OPTIONS

 **4**  **2**  **2**



Option ELE-1

Provide LED lighting upgrade.