
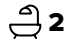
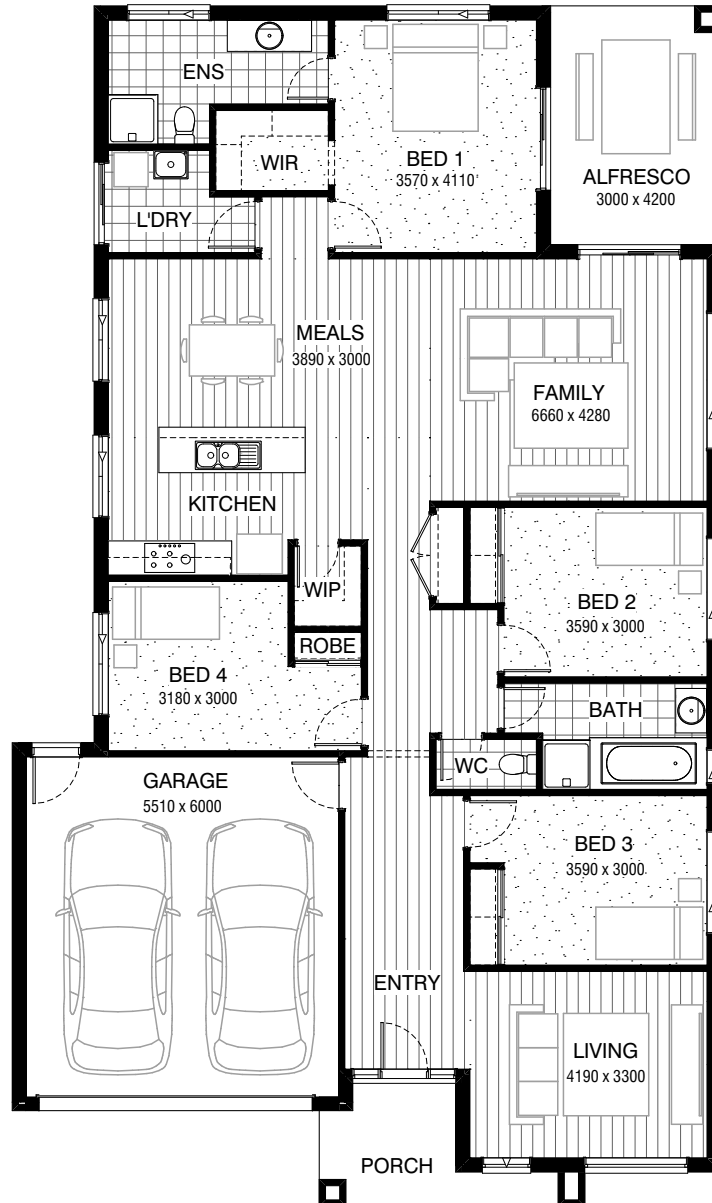


Total squares **25.2sq**

 **4**  **2**  **2**



**FLOORPLAN OPTIONS**

All available ready-to-go floorplan options for this design can be viewed on the following pages, or visit [www.burbank.com.au](http://www.burbank.com.au).

**Facades available:**

Arkley, Drysdale, Haring

**Overall home width 12.47m**

**Overall home length 21.11m**

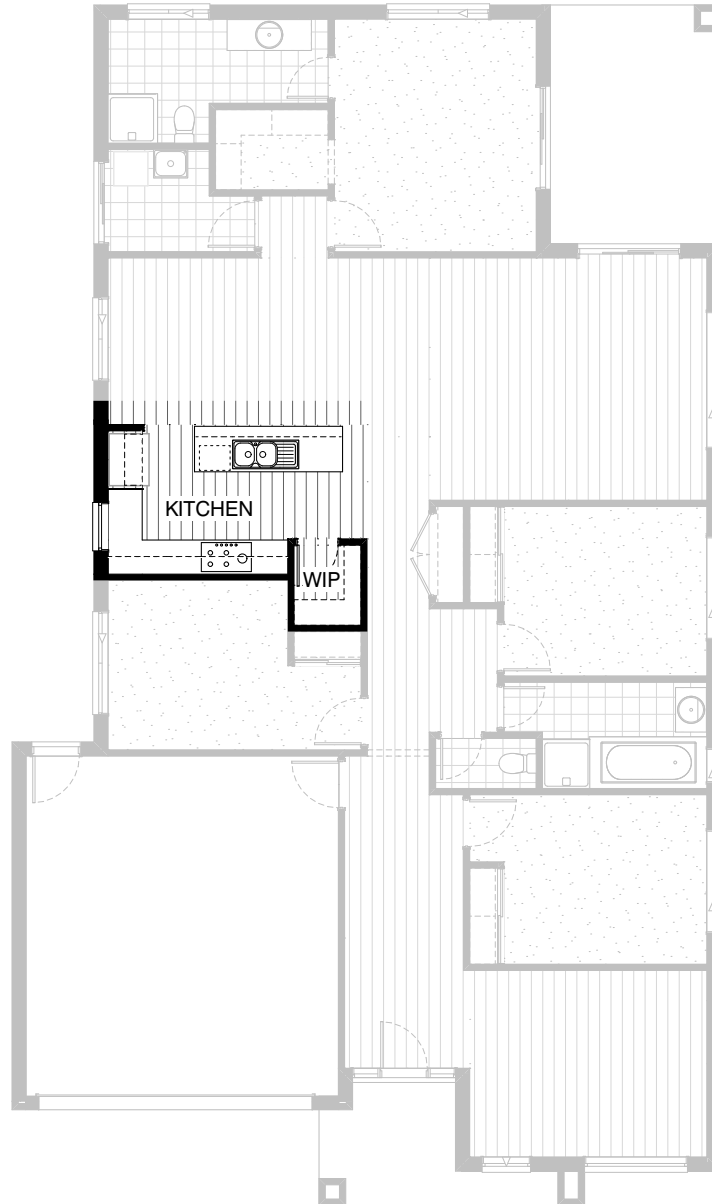
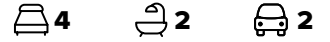
Residence	178.9m <sup>2</sup>	19.3sq
Garage	36.3m <sup>2</sup>	3.9sq
Porch	6.3m <sup>2</sup>	0.7sq
Alfresco	12.6m <sup>2</sup>	1.4sq
<b>Total</b>	<b>234.1m<sup>2</sup></b>	<b>25.2sq</b>

Listed details based on Drysdale facade floorplan (illustrated)

\*Copyright conditions. All photos and illustrations are representative only. Floor plans and specifications may be varied by Burbank without notice, the dimensions are diagrammatic only and a Building Contract with final drawings will display correct dimensions and detail. All designs are the property of Burbank and must not be used, reproduced, copied or varied, wholly or in part without written permission from an authorised Burbank representative. Copyright Burbank Australia Pty Ltd. ABN 91 007 099 872. Builders Registration Number CDB-U-52603.

**Call 13 BURBANK**  
**Visit [burbank.com.au](http://burbank.com.au)**

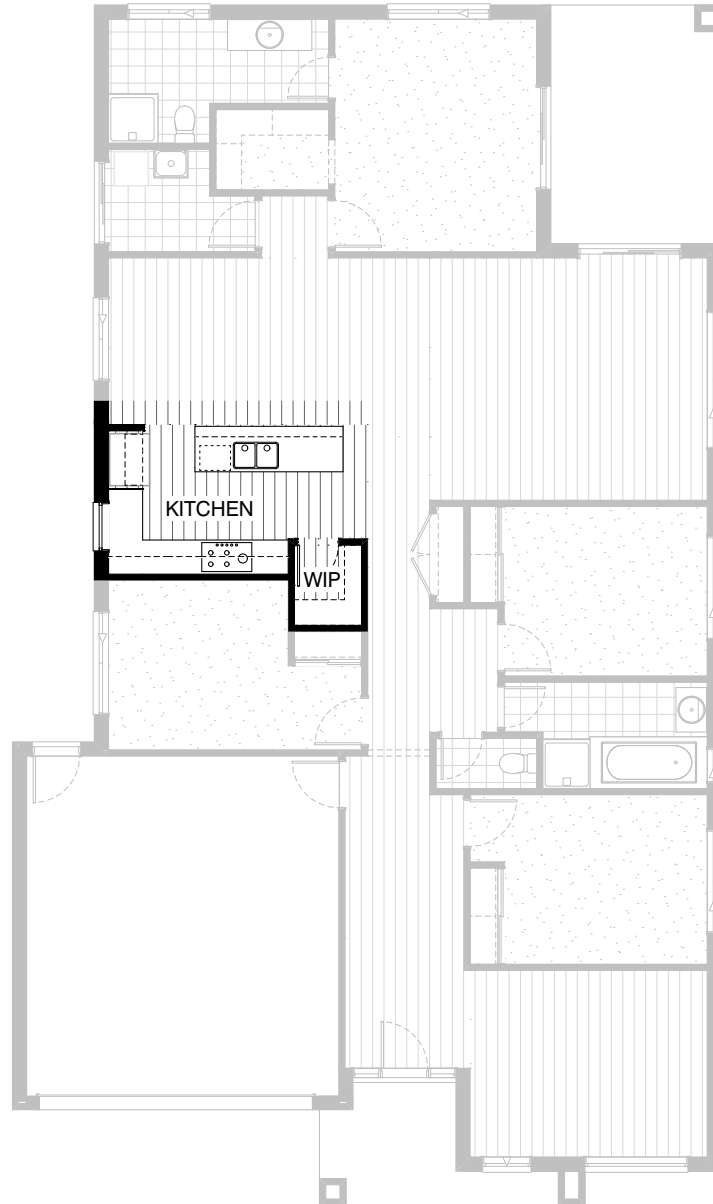
FLOORPLAN OPTIONS



## KITCHEN OPTION STANDARD COLOUR BOARD

- Provide Kitchen option with
- 1no. laminated open shelf above refrigerator space,
  - 2no. 600mm base cupboards,
  - 1no. 800mm blind carcass with 1no. 350mm door,
  - 2no. 600mm overhead cupboards,
  - 1no. 900mm overhead cupboard,
  - 1no. 900mm underbench over with 900mm hotplate
  - 1no. 900mm retractable rangehood concealed within carcass,
  - 1no. laminated MW provision with pot drawer below,
  - 1no. 800mm base cupboard,
  - 1no. laminated DW provision,
  - 2no. 450mm drawers with additional tiled splashback and bench top to suit.
- Option contains standard specification

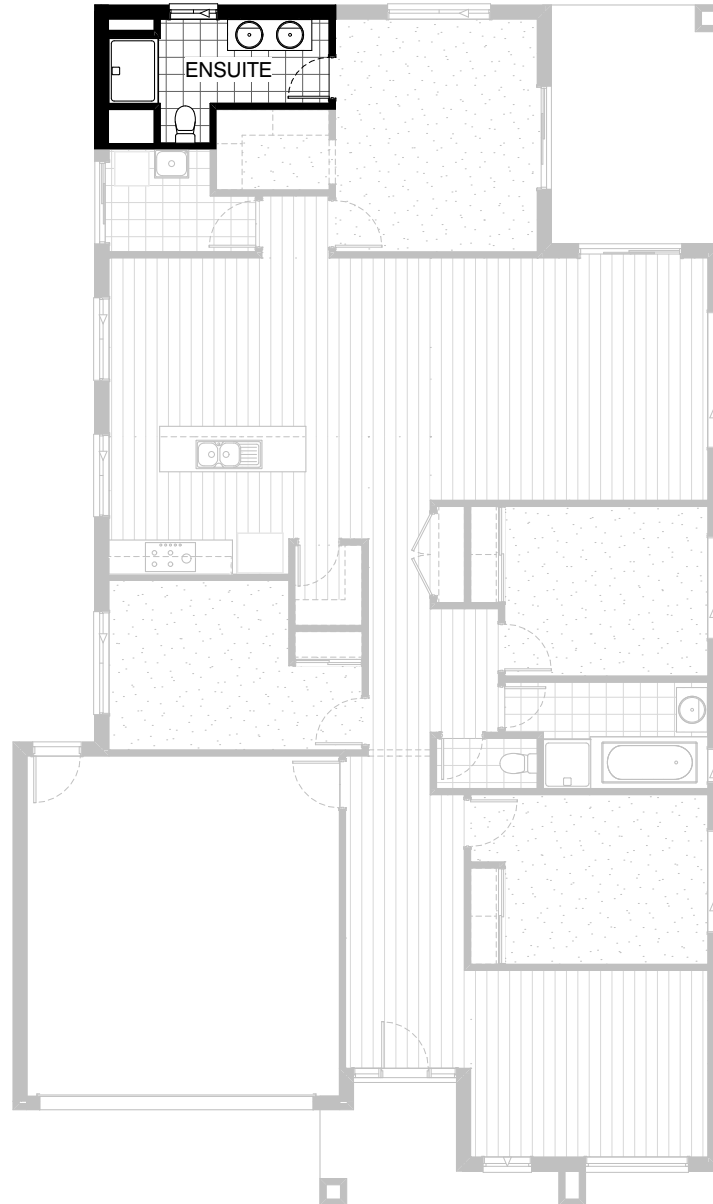
FLOORPLAN OPTIONS



## KITCHEN OPTION UPGRADE COLOUR BOARD

- Provide Kitchen option with
- 1no. laminated open shelf above refrigerator space,
  - 2no. 600mm base cupboards,
  - 1no. 800mm blind carcass with 1no. 350mm door,
  - 2no. 600mm overhead cupboards,
  - 1no. 900mm overhead cupboard,
  - 1no. 900mm underbench over with 900mm hotplate
  - 1no. 900mm retractable rangehood concealed within carcass,
  - 1no. laminated MW provision with pot drawer below,
  - 1no. 800mm base cupboard,
  - 1no. laminated DW provision,
  - 2no. 450mm drawers with additional tiled splashback and bench top to suit.
- Option provides upgrade specification

FLOORPLAN OPTIONS

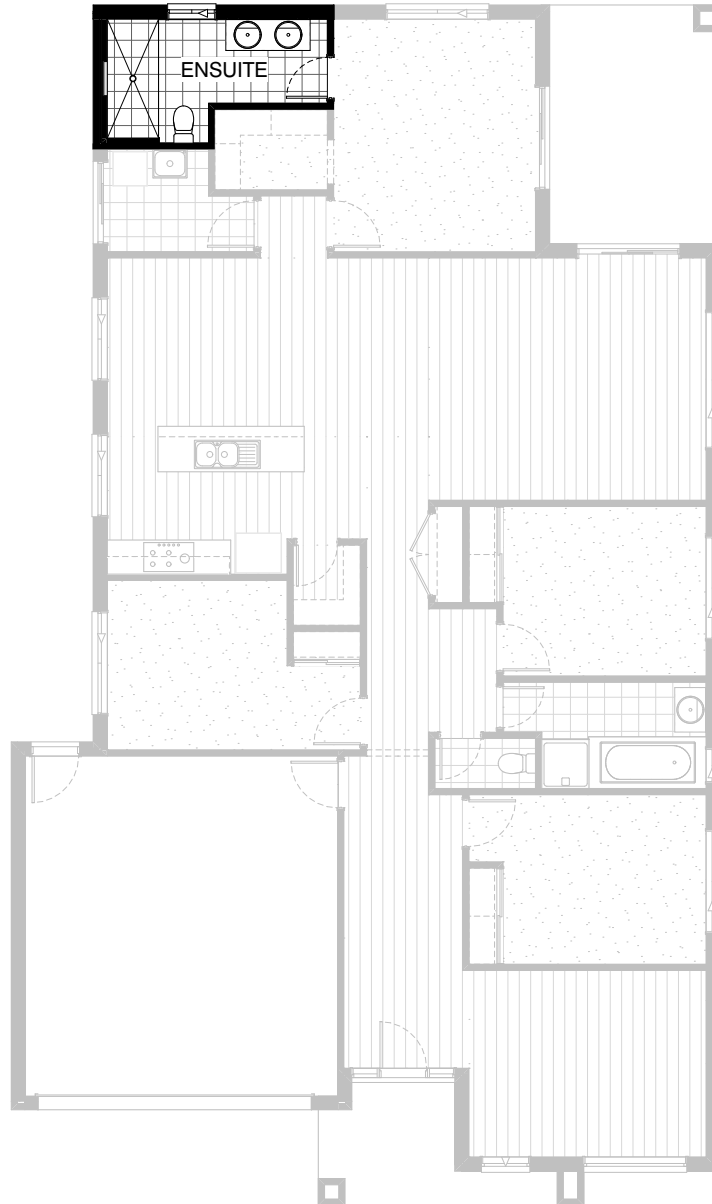


## ENSUITE OPTION STANDARD COLOUR BOARD

Provide Ensuite Option with 1no. 1200mm x 900mm  
polymarble shower base ILO standard.  
1no. 1482mm wide vanity unit with 2no. basins ILO standard.  
Option contains standard specification

**FLOORPLAN OPTIONS**

 **4**    **2**    **2**



## ENSUITE OPTION UPGRADE COLOUR BOARD

Provide Ensuite Option with 1no. 1200mm x 900mm tiled shower base ILO standard, with 300mm high x 600mm wide tiled niche.  
1no. 1482mm wide vanity unit with 2no. basins ILO standard.  
Option provides upgrade specification

**FLOORPLAN OPTIONS**



## LAUNDRY OPTION STANDARD COLOUR BOARD

Provide Laundry option with s.s. inset trough  
1no. 800mm base cabinet,  
and 1no. 800mm overhead cabinets  
and additional tiled splashback and bench top to suit.  
Option contains standard specification

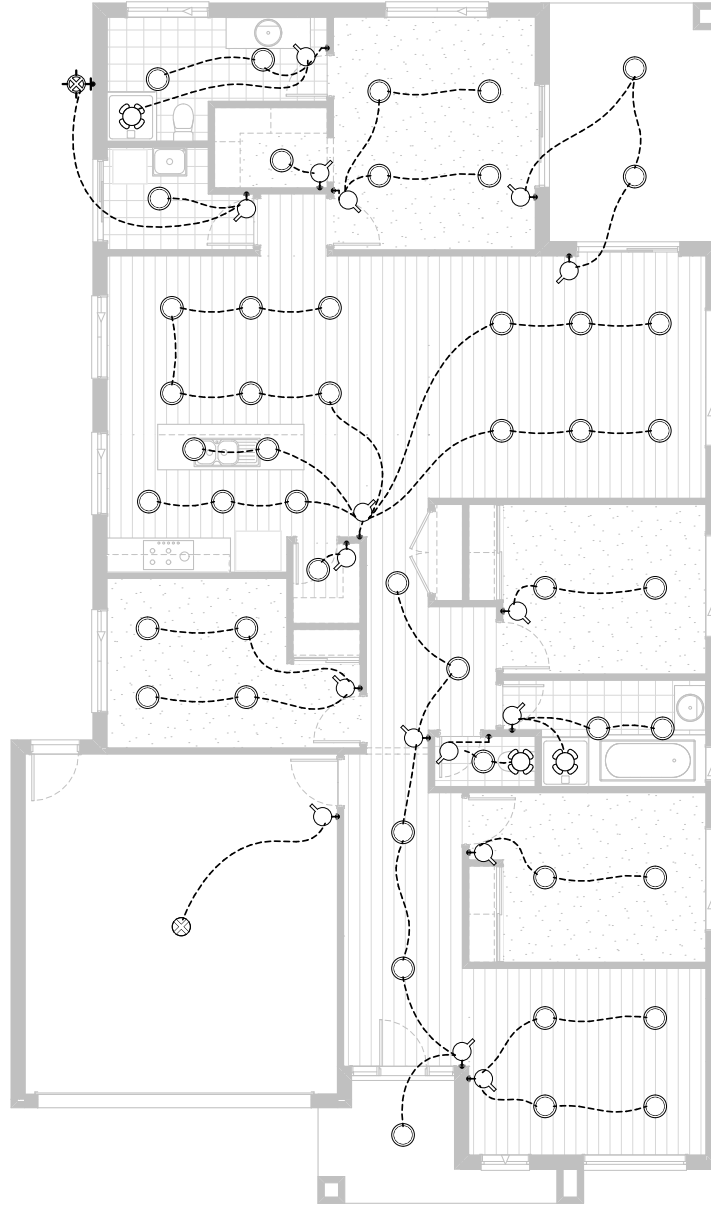
**FLOORPLAN OPTIONS**



## LAUNDRY OPTION UPGRADE COLOUR BOARD

Provide Laundry option with s.s. inset trough  
1no. 800mm base cabinet,  
and 1no. 800mm overhead cabinets  
and additional tiled splashback and bench top to suit.  
Option provides upgrade specification

**FLOORPLAN OPTIONS**



**Option ELE-1**

Provide LED lighting upgrade