


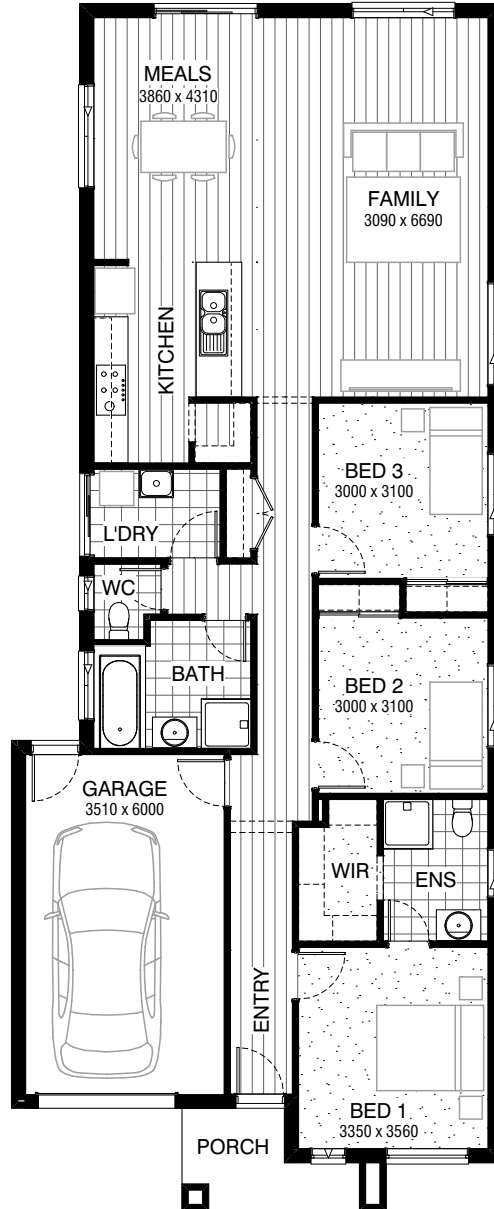


Total squares **17.3sq**

 **3**  **2**  **1**



FLOORPLAN OPTIONS

All available ready-to-go floorplan options for this design can be viewed on the following pages, or visit www.burbank.com.au.

Facades available:

Arkley, Drysdale, Haring	
Overall home width	8.63m
Overall home length	21.23m

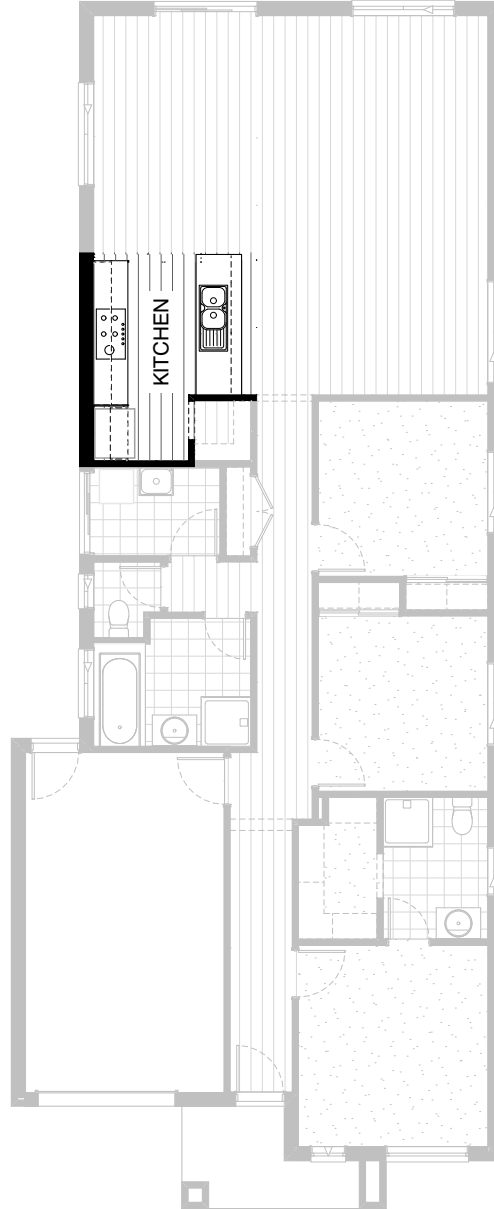
Residence	132.2m ²	14.2sq
Garage	23.7m ²	2.6sq
Porch	4.7m ²	0.5sq
Total	160.6m²	17.3sq

Listed details based on Drysdale facade floorplan (illustrated)
^ This design is suitable for small lot housing code

*Copyright conditions. All photos and illustrations are representative only. Floor plans and specifications may be varied by Burbank without notice, the dimensions are diagrammatic only and a Building Contract with final drawings will display correct dimensions and detail. All designs are the property of Burbank and must not be used, reproduced, copied or varied, wholly or in part without written permission from an authorised Burbank representative. Copyright Burbank Australia Pty Ltd. ABN 91 007 099 872. Builders Registration Number CDB-U-52603.

Call 13 BURBANK
Visit burbank.com.au

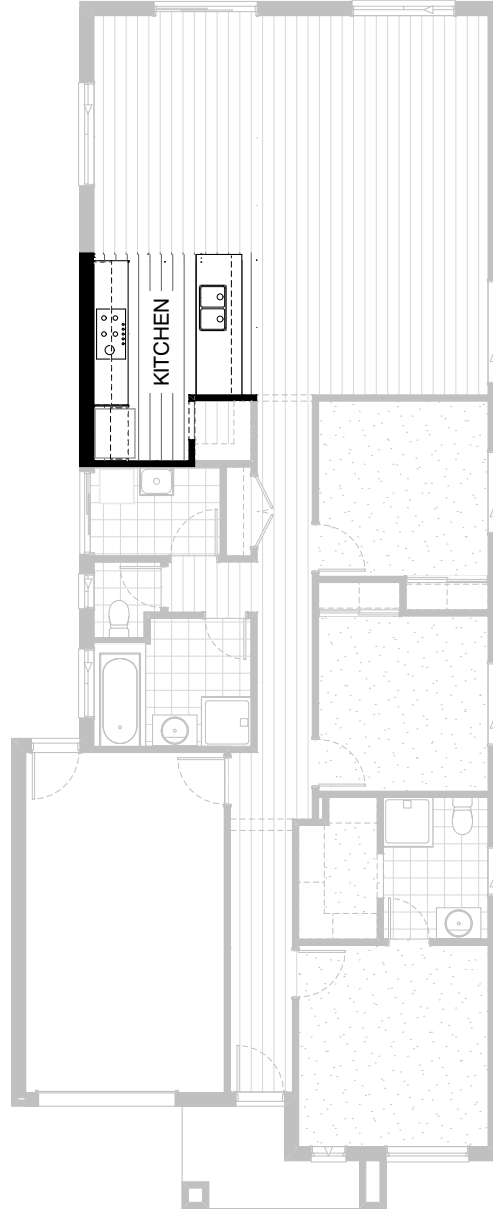
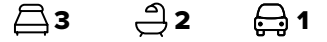
FLOORPLAN OPTIONS



**KITCHEN OPTION
STANDARD COLOUR BOARD**

- Provide Kitchen Option with
- 1no. laminated Open shelf above refrigerator space,
 - 2no. 800mm base cupboards,
 - 2no. 800mm overhead cupboards,
 - 1 no. 900mm underbench oven and 1no. 900mm hotplate
 - 1 no. 900mm retractable range hood concealed within overhead cupboard,
 - 1no. 450mm drawers,
 - 1no. 900mm base cupboard,
 - 1no. laminated DW provision,
 - 1no. 400mm base cupboard,
- Provide additional tiled splash back and bench top to suit.
Option contains standard specification

FLOORPLAN OPTIONS



**KITCHEN OPTION
UPGRADE COLOUR BOARD**

- Provide Kitchen Option with
- 1no. laminated Open shelf above refrigerator space,
 - 2no. 800mm base cupboards,
 - 2no. 800mm overhead cupboards,
 - 1 no. 900mm underbench oven and 1no. 900mm hotplate
 - 1 no. 900mm retractable range hood concealed within overhead cupboard,
 - 1no. 450mm drawers,
 - 1no. 900mm base cupboard,
 - 1no. laminated DW provision,
 - 1no. 400mm base cupboard,
- Provide additional tiled splash back and bench top to suit.
Option contains upgraded specification

*Copyright conditions. All photos and illustrations are representative only. Floor plans and specifications may be varied by Burbank without notice, the dimensions are diagrammatic only and a Building Contract with final drawings will display correct dimensions and detail. All designs are the property of Burbank and must not be used, reproduced, copied or varied, wholly or in part without written permission from an authorised Burbank representative. Copyright Burbank Australia Pty Ltd. ABN 91 007 099 872. Builders Registration Number CDB-U-52603.

FLOORPLAN OPTIONS



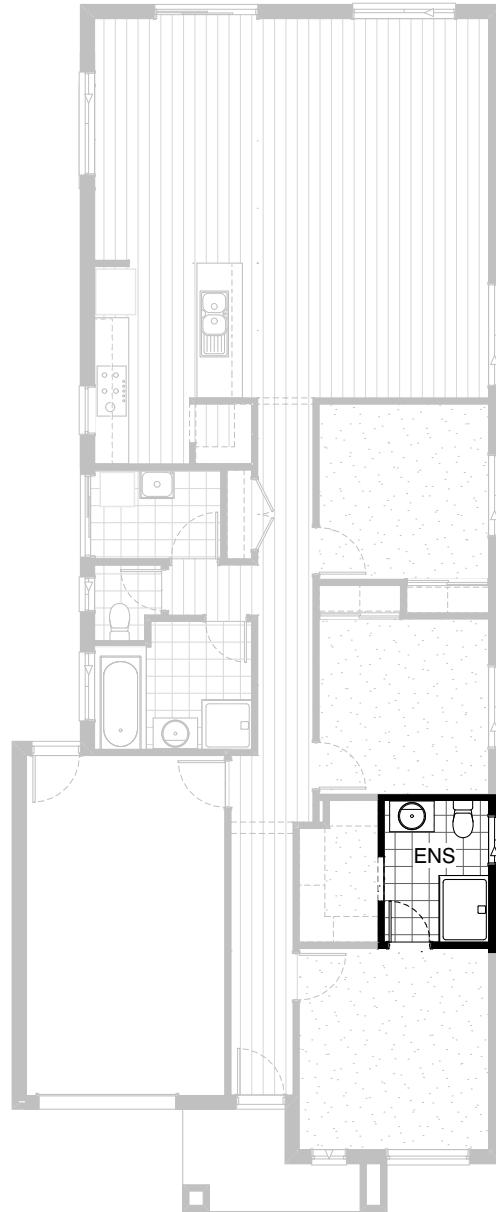
3



2






1

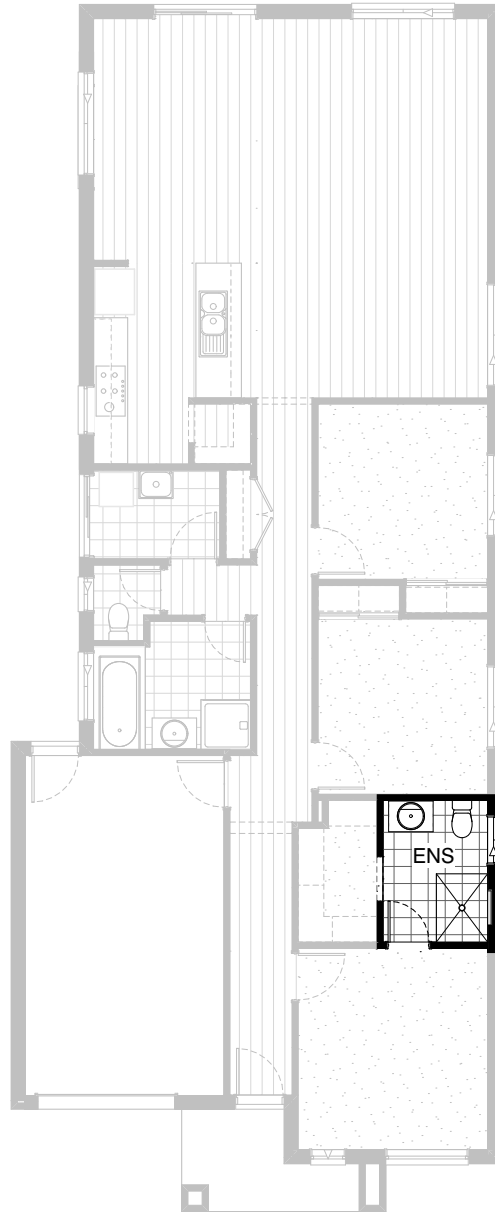


ENSUITE OPTION STANDARD COLOUR BOARD

Provide Ensuite upgrade including
1200mm x 900mm polymarble shower base with relocation of vanity,
Provide 1200mm x 850mm sliding window.
Option contains standard specification

FLOORPLAN OPTIONS

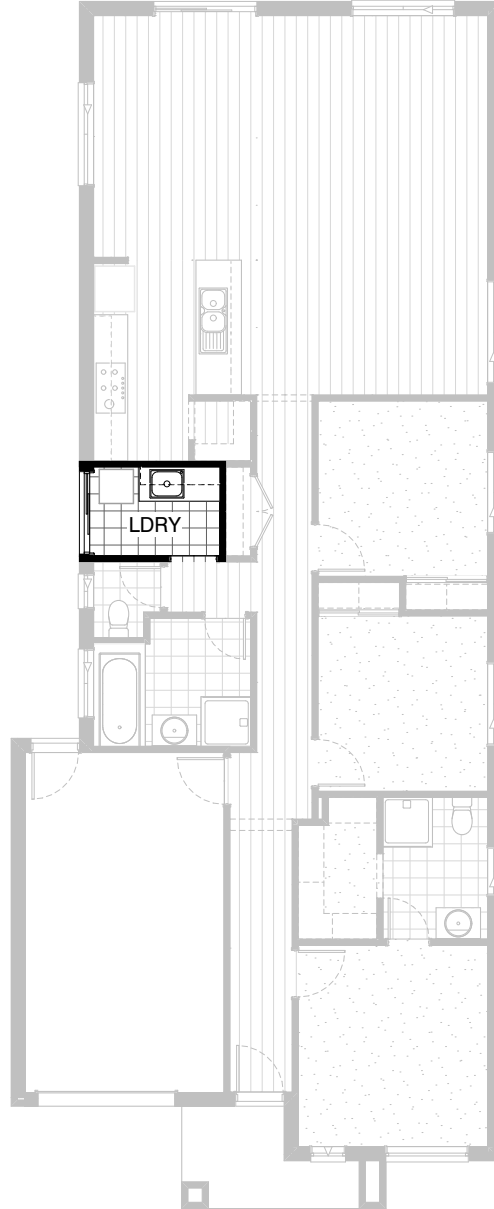
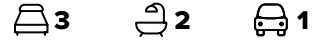
 **3**  **2**  **1**



**ENSUITE OPTION
UPGRADE COLOUR BOARD**

Provide Ensuite upgrade including
1200mm x 900mm tied shower base with 300mm x 600mm tiled niche
Relocate vanity.
Provide 1200mm x 850mm sliding window.
Option provides upgrade specification




FLOORPLAN OPTIONS

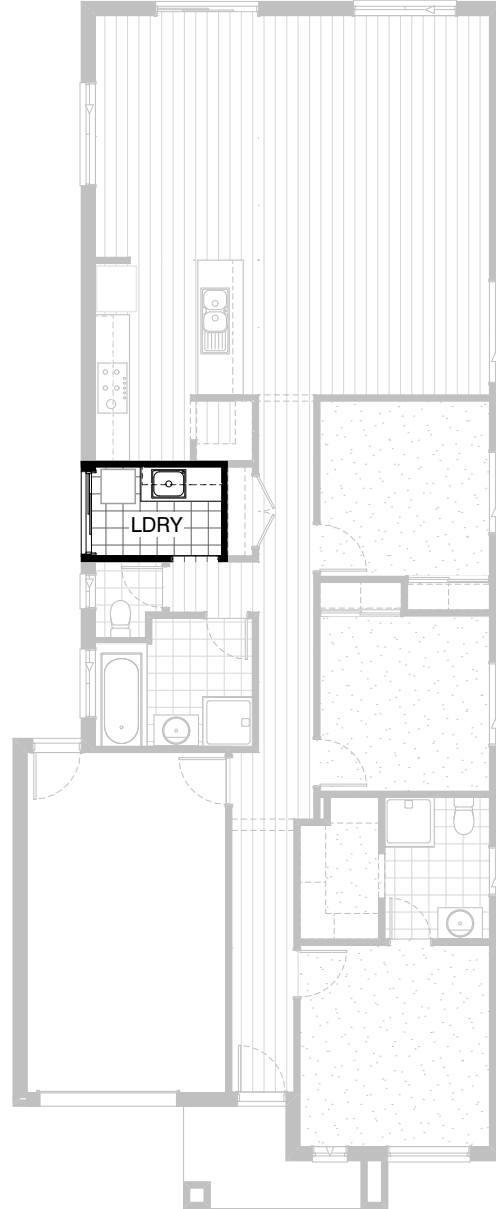


LAUNDRY OPTION
STANDARD COLOUR BOARD

Provide Laundry Upgrade including
s.s. inset trough in bench top,
1no. 900mm base cabinet,
1no. 450mm base cabinet,
1no. 900mm overhead cabinet,
1no. 450mm overhead cabinet,
Additional tiled splashback and bench top to suit.
Option contains standard specification

FLOORPLAN OPTIONS




 **3**  **2**  **1**



LAUNDRY OPTION UPGRADE COLOUR BOARD

Provide Laundry Upgrade including
s.s. inset trough in bench top,
1no. 900mm base cabinet,
1no. 450mm base cabinet,
1no. 900mm overhead cabinet,
1no. 450mm overhead cabinet,
Additional tiled splashback and bench top to suit.
Option contains upgraded specification

FLOORPLAN OPTIONS




 **3**  **2**  **1**

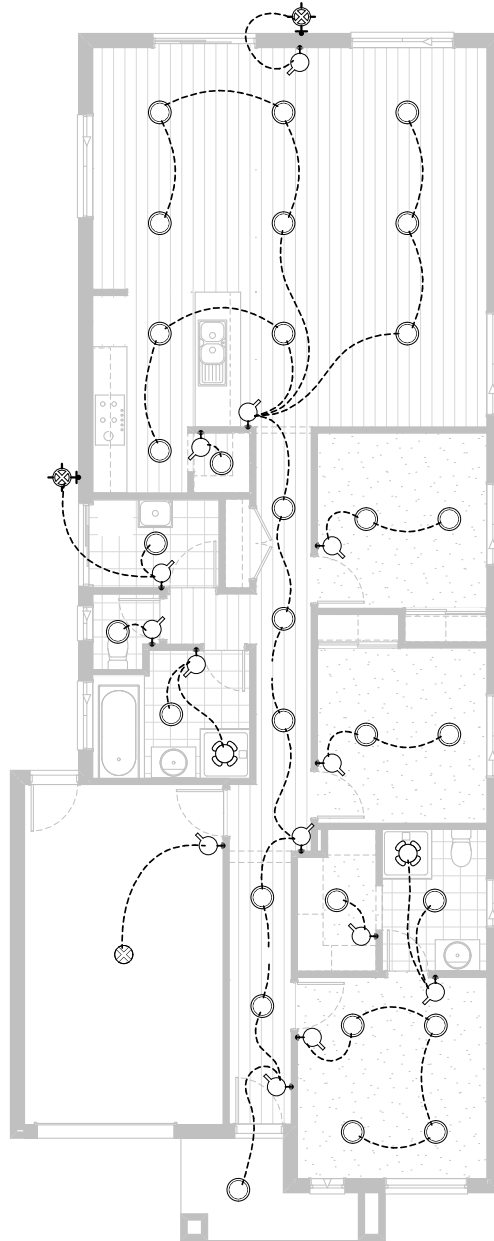


ALFRESCO OPTION

Provide Alfresco under dwelling roof line to rear of Meals including structural concrete floor, light point and 2no. 470mm x 470mm brick piers.
Option contains standard specification
Option contains standard lighting - NOTE: This option cannot be selected with ELE-1.
Increases area by 14.35m².
Increases length by 3240mm.

FLOORPLAN OPTIONS

 **3**  **2**  **1**



Option ELE-1

Provide LED lighting upgrade