



**FLOORPLAN OPTIONS**

We personalise our floorplans. Talk to us about our huge range of ready-to-go design options.

**Facades available:**

|                            |               |
|----------------------------|---------------|
| Barrine, Mackay, Corella   |               |
| <b>Overall home width</b>  | <b>8.75m</b>  |
| <b>Overall home length</b> | <b>17.87m</b> |

|              |                           |               |
|--------------|---------------------------|---------------|
| Residence    | 175.4m <sup>2</sup>       | 18.9sq        |
| Garage       | 37.2m <sup>2</sup>        | 4sq           |
| Porch        | 4.5m <sup>2</sup>         | 0.5sq         |
| <b>Total</b> | <b>217.1m<sup>2</sup></b> | <b>23.4sq</b> |

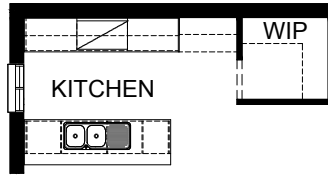
Listed details based on Barrine facade floorplan (illustrated)

\*Copyright conditions. All photos and illustrations are representative only. Floor plans and specifications may be varied by Burbank without notice, the dimensions are diagrammatic only and a Building Contract with final drawings will display correct dimensions and detail. All designs are the property of Burbank and must not be used, reproduced, copied or varied, wholly or in part without written permission from an authorised Burbank representative. Copyright Burbank Australia (NSW) Pty Ltd. ABN 88 610 822 770. NSW BL 295627C ACT BL 2016566.

**Call 13 BURBANK**  
**Visit [burbank.com.au](http://burbank.com.au)**

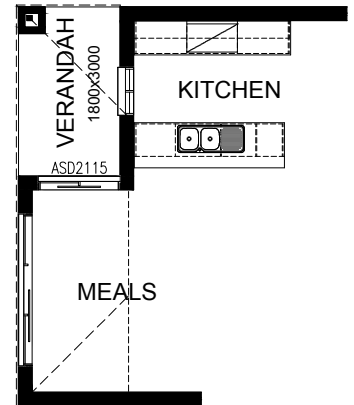
**OPTION K1**

Provide Kitchen option with additional 1no. MW provision with pot drawer below, 1no. laminated open shelf to refrigerator space in lieu of standard.



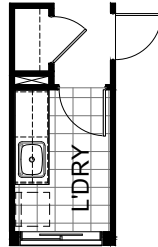
**OPTION EP1**

Provide Verandah option with 1no. 470mm x 470mm brick pier. Increases area by 5.40m<sup>2</sup>. Provide 1No. 21-15 ASD to Meals.



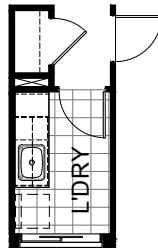
**OPTION LD1**

Provide Laundry option by reducing part of Linen and Passage and increasing Laundry length by 200mm. Provide additional inset laminated trough, 2no. 800mm base cupboards, 2no. 800mm overhead cupboards and additional tiled splash back and bench top to suit.



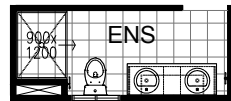
**OPTION LD2**

Provide Laundry option by reducing part of Linen and Passage and increasing Laundry length by 200mm. Provide additional inset laminated trough, 1no. 400mm broom cupboard, 1no. 400 base cupboard, 1no. 800mm base cupboard, 1no. 400mm overhead cupboard 1no. 800mm overhead cupboard and additional tiled splash back and bench top to suit.



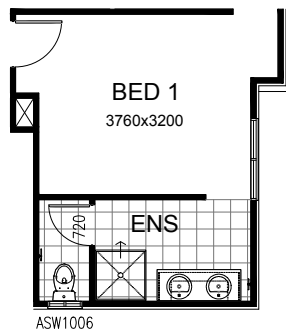
**OPTION ENS1**

Provide Ensuite option with additional 1no. 1200mm x 900mm tiled shower base in lieu of standard 1no. 900mm x 900mm tiled shower base and additional bowl to 1582mm vanity unit.



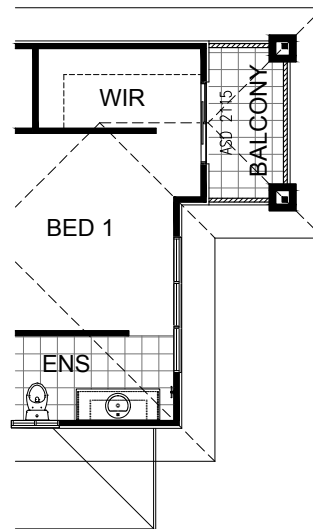
**OPTION ENS2**

Provide Ensuite option by reducing part of Bed 1 and increasing Ensuite length by 300mm. Provide additional bowl to 1482mm vanity unit. Relocate shower to create enclosed WC. Provide 1027mm by 610mm aluminium sliding window to WC and 1no. 720mm flush panel hinged door.



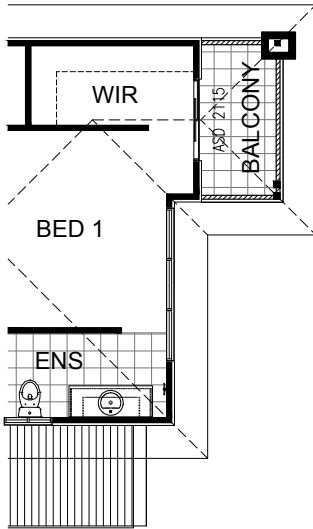
**OPTION EP2 - BARRINE FACADE**

Provide Balcony Option. Provide 2110mm x 1450mm Aluminium Sliding Door, ceramic tiled floor and timber framed wall balustrade with painted 'Scyon stria' weatherboard cladding. Provide 2no. 90mm x 90mm painted posts & extend roof line over balcony.



**OPTION EP3 - MACKAY FACADE**

Provide Balcony Option.  
Provide 2110mm x 1450mm Aluminium Sliding Door, ceramic tiled floor and timber framed wall balustrade with painted finish cement sheet 'Axon' cladding.  
Provide 1no. 90mm x 90mm & 2no. 115mm x 115mm painted timber posts & extend roof line over balcony.



**OPTION EP4 - CORELLA FACADE**

Provide Balcony Option.  
Provide 2110mm x 1450mm Aluminium Sliding Door, ceramic tiled floor and timber framed wall balustrade with rendered fc 'harditex'.  
Provide 2no. 90mm x 90mm painted posts & extend roof line over balcony.

