

**Facades available:**

Coastal, Delta, Kingston, Nouveau  
Salisbury, Traditional, York

**Overall home width 14.27m**

**Overall home length 19.79m**

Residence	192.4m <sup>2</sup>	20.7sq
Garage	38.7m <sup>2</sup>	4.2sq
Porch	4.0m <sup>2</sup>	0.4sq
Alfresco	14.0m <sup>2</sup>	1.5sq
<b>Total</b>	<b>249.1m<sup>2</sup></b>	<b>26.8sq</b>

**FLOORPLAN OPTIONS**

We personalise our floorplans. Talk to us about our huge range of ready-to-go design options.

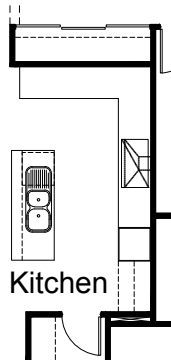
Listed details based on Traditional facade floorplan (illustrated)

\*Copyright conditions. All photos and illustrations are representative only. Floor plans and specifications may be varied by Burbank without notice, the dimensions are diagrammatic only and a Building Contract with final drawings will display correct dimensions and detail. All designs are the property of Burbank and must not be used, reproduced, copied or varied, wholly or in part without written permission from an authorised Burbank representative. Copyright Burbank Australia (QLD) Pty Ltd. ABN 77 103 014 615. QBCC 1046544.

**Call 13 BURBANK**  
**Visit [burbank.com.au](http://burbank.com.au)**

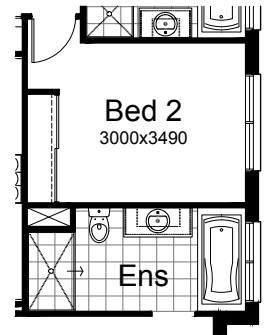
**OPTION K1**

Provide Kitchen 'L' shape redesign by relocating refrigerator space and provide laminated open shelf above and extend Linen cupboard with an additional sliding door. Delete microwave provision with 1no. pot drawer and provide laminated microwave tower. Additional 2no. 600mm pot drawers, 2no. 300mm base cupboards, 1no. 1050mm blind carcass with 600mm door, 3no. 600mm base cupboards, 1no. 900mm base cupboard, 1no. dishwasher provision and 1no. 450mm drawers. Provide additional tiled splash back and bench top to suit.



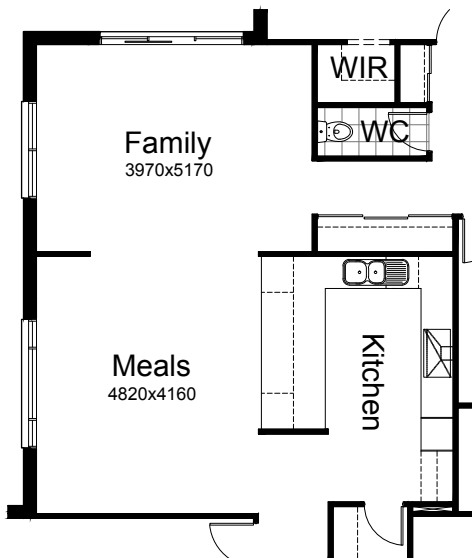
**OPTION ENS1**

Provide Ensuite upgrade by deleting Bed 2 WIR and providing a site built plaster lined robe with 2no. sliding doors and 1no. hanging rail/shelf. Provide additional bath with tiled bath hob, 1282mm wide vanity in lieu of standard 982mm vanity, relocate toilet to suit, additional 1500x900 tiled shower base in lieu of standard 1000x1000mm tiled shower base with additional site built plaster lined void with 1200mm x 1510mm sliding window in lieu of standard 1800mm x 610mm sliding window.



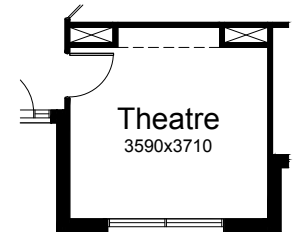
**OPTION K2**

Provide Kitchen 'U' shape redesign by relocating refrigerator space and provide laminated open shelf above and extend Linen cupboard with an additional sliding door. Provide laminated microwave tower, 2no. 150mm laminated wine racks, 2no. 450mm base cupboards, 1no. 450mm drawers, 1no. 600mm base cupboard, 1no. 900mm base cupboard, 2no. 1050mm blind carcass with 600mm doors, 3no. 300mm base cupboards, 1no. 800mm base cupboard and 1no. dishwasher provision. Provide additional bench tops and tiled splash back to suit. Additional site built plaster lined stud walls to Kitchen, Family and Meals.



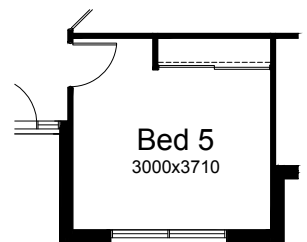
**OPTION IP1**

Convert standard Living room into Theatre room including 1no. 2040mm x 820mm flush panel hinged door, additional plaster lined stud wall and feature wall with plaster columns and bulkhead above.



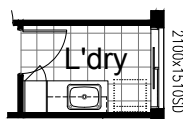
**OPTION IP2**

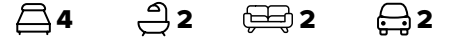
Provide Bed 5 in lieu of Living room with 1no. 820mm flush panel hinged door, site built plaster lined robe with 1no. hanging rail and shelf and 2no. sliding doors to suit.



**OPTION LD1**

Provide prefabricated laminated laundry trough cabinet with insert trough including additional 400mm tall laminated Linen cupboard with 4no. shelves, 1no. 800mm base cupboard, 1no. 300mm base cupboard, 1no. 800mm overhead cupboard, 1no. 300mm overhead cupboard and additional tiled splash back and bench top to suit.





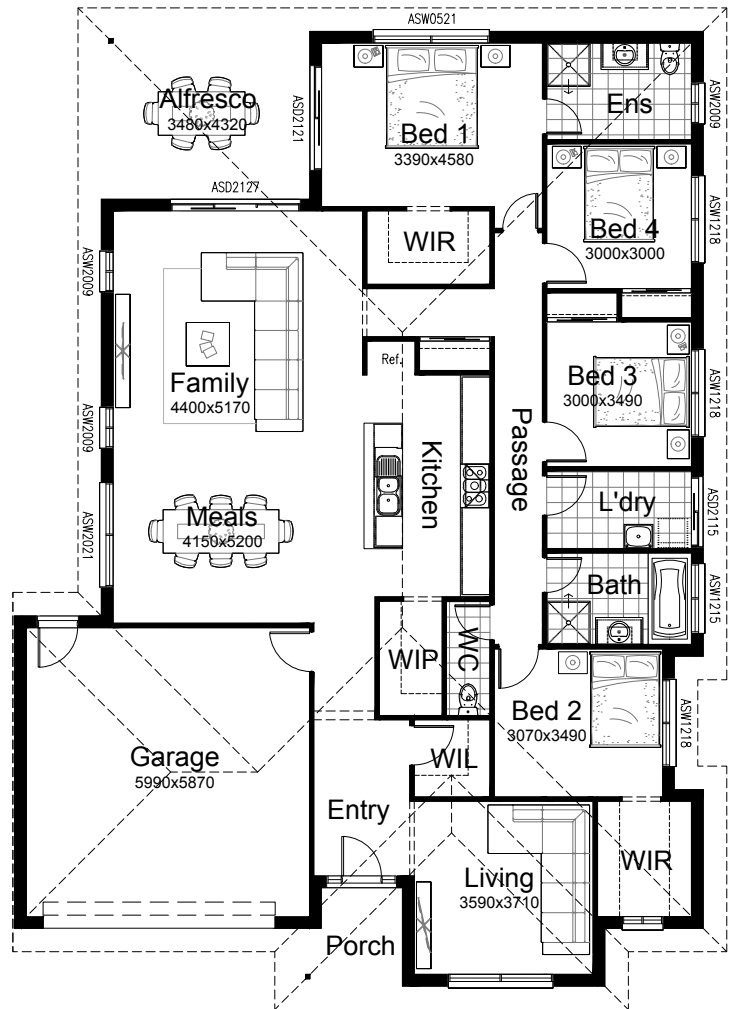
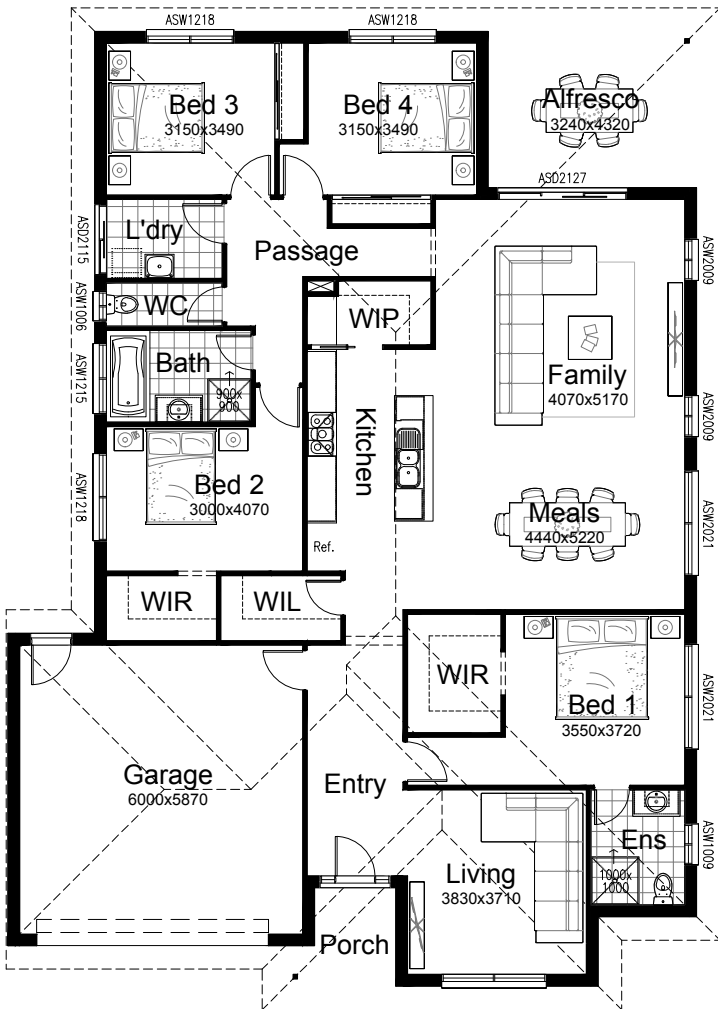
**OPTION EP1**

Provide floor plan option with mirrored rear section of the home. Windows replaced and relocated as shown. Option pushes Garage forward 360mm and adds 3.05m<sup>2</sup> to the overall floor area.

New Kitchen includes 900mm canopy rangehood, 900mm electric cooktop, 600mm under bench oven, 450mm drawer unit, dishwasher provision, microwave provision with pot drawer, 3No. 900mm base cupboard, 1No. 800mm base cupboards, 2No. 400mm base cupboards, 2No. 150mm base cupboards, additional bench top and tiled splashback to Walk-in Pantry to suit.

**OPTION IP3**

Provide floor plan option with Bed 1 to the rear of the home. Windows replaced and relocated as shown. Option adds ASD2121 sliding door to Bed 1.





**OPTION EP2**

Provide floor plan option with mirrored rear section of the home and Bed 1 to the rear. Windows replaced and relocated as shown. Option pushes Garage forward 360mm and adds 1.25m<sup>2</sup> to the overall floor area. New Kitchen includes 900mm canopy rangehood, 900mm electric cooktop, 600mm under bench oven, 450mm drawer unit, dishwasher provision, microwave provision with pot drawer, 2No. 900mm base cupboard, 1No. 800mm base cupboards, 2No. 400mm base cupboards, 2No. 150mm base cupboards, additional bench top and tiled splashback to Walk-in Pantry to suit.

**OPTION ENS2**

Provide Ensuite upgrade by swapping locations of WC and shower. Upgrade tiled shower base to full width of Ensuite (1900mm wide). Replace standard ASW2009 window with ASW1006.

Note: Option only available in conjunction with Options IP3 and EP2.

