



Facades available:	
Coastal, Delta, Kingston, Nouveau	
Salisbury, Traditional, York	
Overall home width	14.27m
Overall home length	22.31m

Residence	223.2m ²	24.0sq
Garage	38.7m ²	4.2sq
Porch	4.0m ²	0.4sq
Alfresco	14.5m ²	1.6sq
Total	280.4m²	30.2sq

FLOORPLAN OPTIONS

We personalise our floorplans. Talk to us about our huge range of ready-to-go design options.

Listed details based on Traditional facade floorplan (illustrated)

*Copyright conditions. All photos and illustrations are representative only. Floor plans and specifications may be varied by Burbank without notice, the dimensions are diagrammatic only and a Building Contract with final drawings will display correct dimensions and detail. All designs are the property of Burbank and must not be used, reproduced, copied or varied, wholly or in part without written permission from an authorised Burbank representative. Copyright Burbank Australia (QLD) Pty Ltd. ABN 77 103 014 615. QBCC 1046544.

Call 13 BURBANK
Visit burbank.com.au



Option Kitchen01

Provide Kitchen 'L' shape redesign by relocating refrigerator space and provide laminated open shelf above and extend Linen cupboard with an additional sliding door.

Delete microwave provision with 1no. pot drawer and provide laminated microwave tower.

Additional 2no. 600mm pot drawers,

2no. 150mm base cupboards,

1no. 1050mm blind carcass with 600mm door,

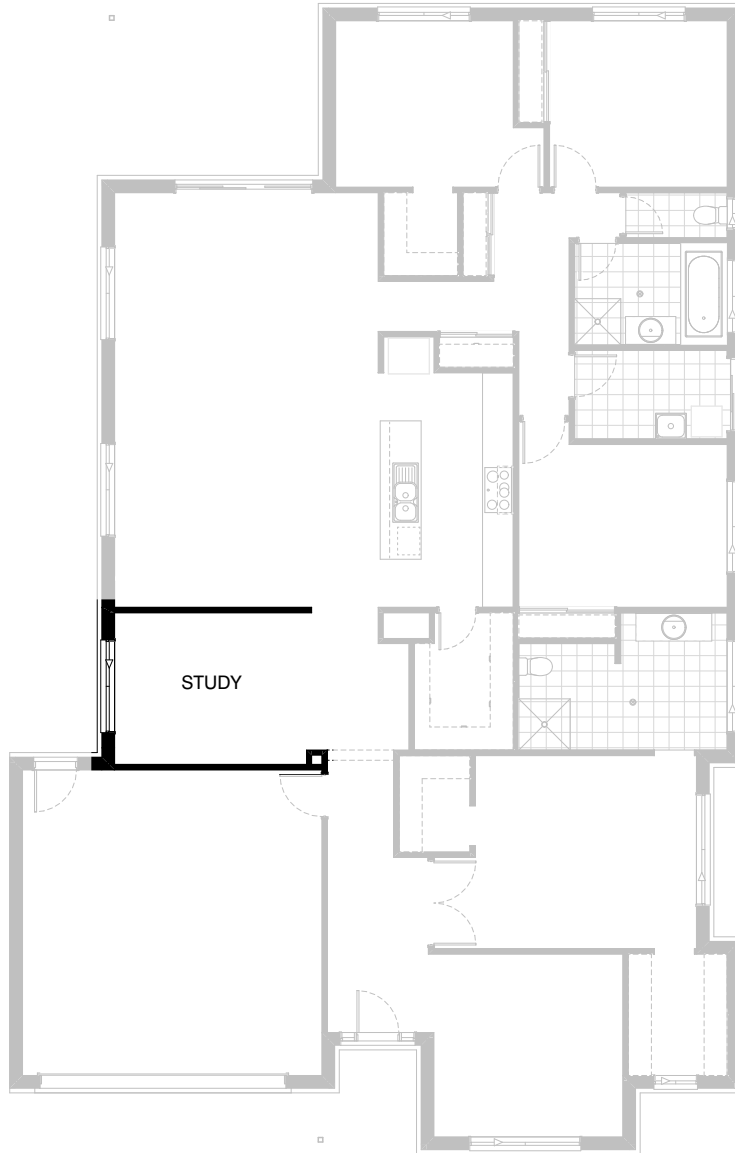
2no. 600mm base cupboards,

1no. 900mm base cupboard,

1no. dishwasher provision and

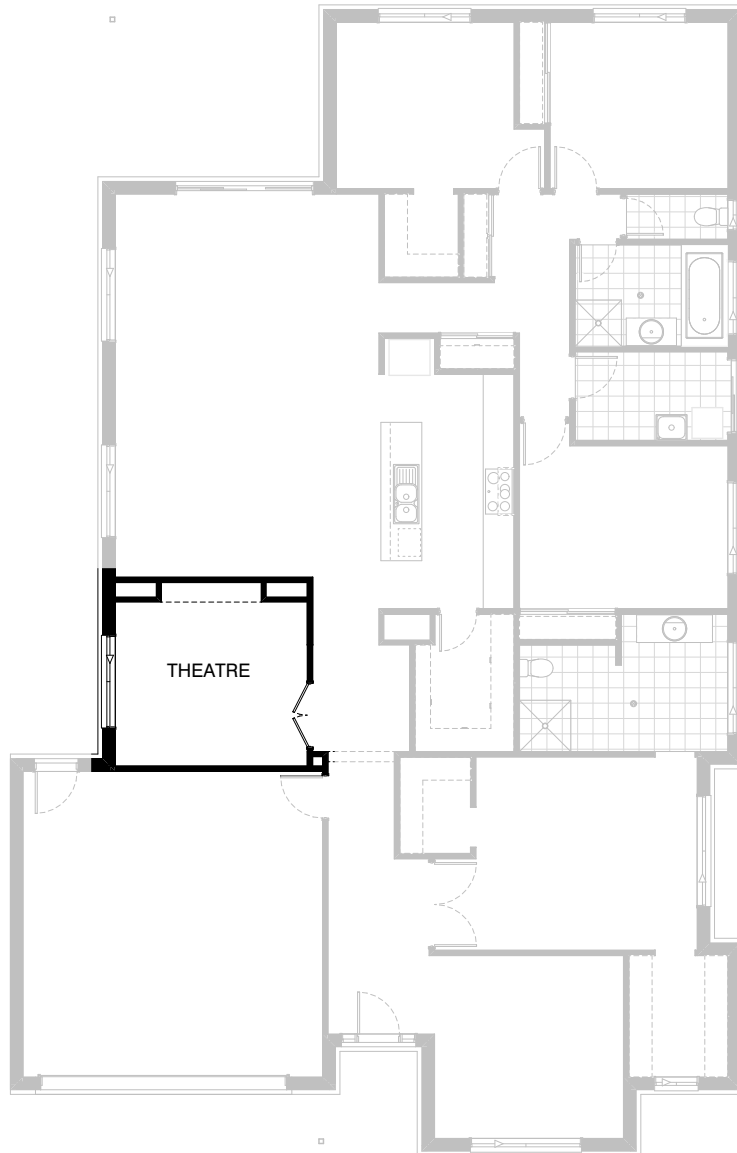
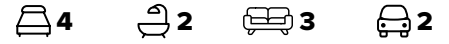
1no. 450mm drawers.

Provide additional tiled splash back and benchtop to suit.



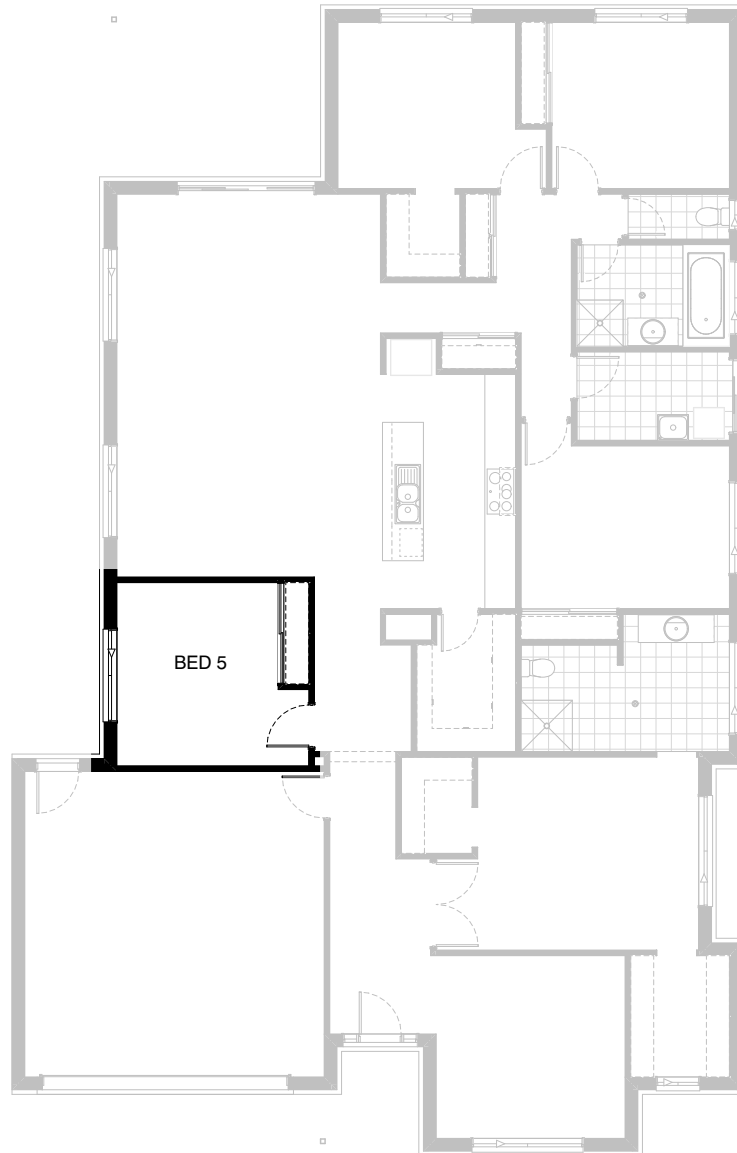
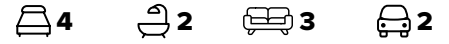
Option Internal01

Provide Study in lieu of Media room by increasing
Meals area by 620mm



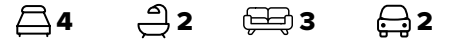
Option Internal02

Convert standard Media room into Theatre room including double 2040mm x 620mm flush panel hinged doors, additional plaster lined stud wall and feature wall with plaster columns and bulkhead above and relocate window by 120mm to suit.



Option Internal03

Provide Bed 5 in lieu of Media room with 1 no. 820mm flush panel hinged doors and site built plaster lined robe with 1 no. hanging rail and shelf with 2 no. sliding doors and 1200mm x 1810mm sliding window in lieu of standard 2100mm x 1810mm sliding window.



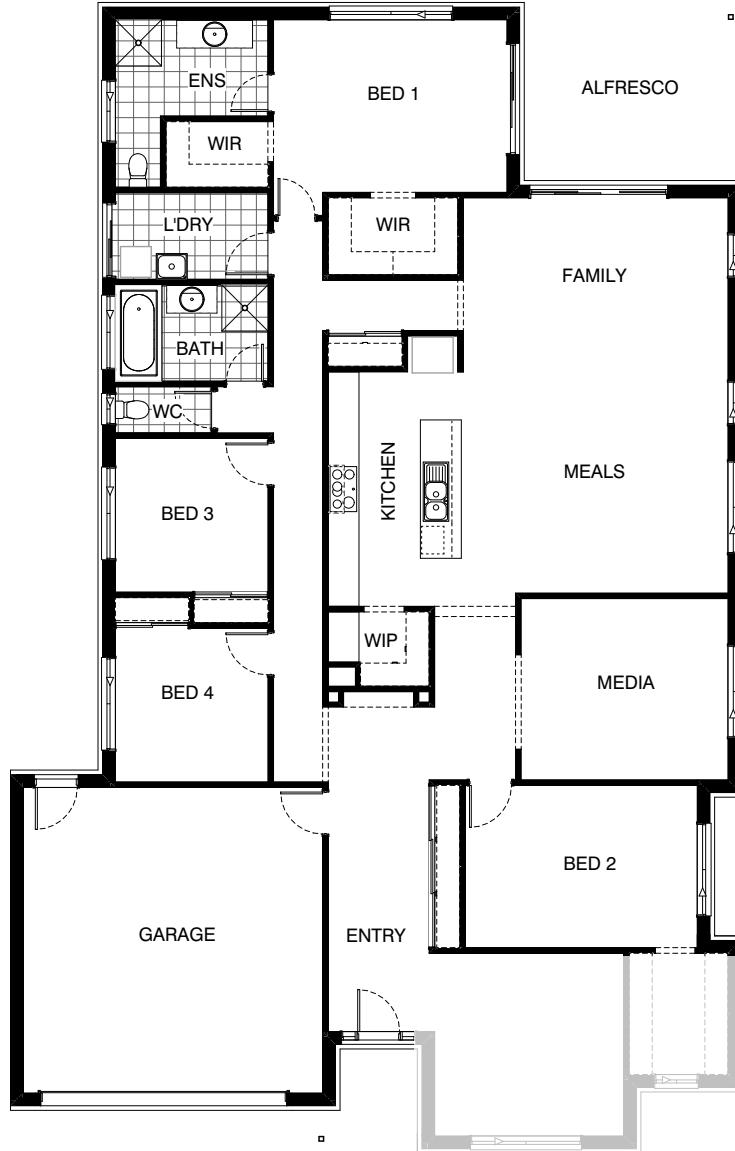
Option Internal04

Provide floor plan option with Bed 1 to the rear of the home.
Windows replaced and relocated as shown.
Option adds ASD2121 sliding door to Bed 1.



Option External01

Provide floor plan option with mirrored rear section of the home. Windows replaced and relocated as shown.
New Kitchen includes 900mm retractable rangehood, 900mm electric cooktop, 900mm under bench oven, 450mm drawer unit, dishwasher provision, microwave provision with pot drawer,
2No. 900mm base cupboard,
2No. 800mm base cupboards,
2No. 700mm base cupboards,
additional benchtop and tiled splashback to suit.



Option External02

Provide floor plan option with mirrored rear section of the home and Bed 1 to the rear. Windows replaced and relocated as shown. Option pushes Garage forward 360mm and adds 1.46m² to the overall floor area. New Kitchen includes 900mm retractable rangehood, 900mm electric cooktop, 900mm under bench oven, 450mm drawer unit, dishwasher provision, microwave provision with pot drawer, 2No. 900mm base cupboard, 2No. 800mm base cupboards, 2No. 700mm base cupboards, 2No. 300mm base cupboards, additional benchtop and tiled splashback to Walk-in Pantry to suit.



Option Ensuite01

Provide Ensuite upgrade by relocating toilet and vanity unit.
Provide 2100x900mm tiled shower base in lieu of standard 1000x1000mm tiled shower base.
Provide 1675mm long bath and 1200x610 sliding window in lieu of 2100x1810 window



Option Ensuite02

Provide 2100x900mm tiled shower base in lieu of standard 1000x1000mm tiled shower base.
Relocate toilet.



Option Ensuite03

Provide Ensuite upgrade/redesign including enclosed WC, upgrade tiled shower base to 1500x900mm in lieu of standard and 1782mm vanity with double basins. Relocate ASW1012 window as shown



Option Ensuite04

Provide Ensuite upgrade/redesign including enclosed WC, upgrade tiled shower base to 1800x900mm in lieu of standard, 1782mm vanity with double basins and free standing bath. Replace ASW1012 window with ASW1015 as shown and add ASW1006 window to WC. Note: Option only available in conjunction with Options Internal03 and External02.



Option Laundry01

Provide prefabricated laminated laundry trough cabinet with insert trough including additional 400mm tall laminated Linen cupboard with 4no. shelves, 2no. 800mm base cupboard, 2no. 800mm overhead cupboard and additional tiled splash back and benchtop to suit.