

**7% GUARANTEED
LEASEBACK!***



\$589,000

THIS DISPLAY IS FOR SALE

image for illustrative purposes only

Home design:

Balmoral 218
Salisbury façade

Address:

32 Ridge Parade
Ridgeview Estate
Narangba

Design features & options:

4 bedrooms
3 living areas
Study nook
Open plan living
with raked ceiling
Plenty of storage

Luxurious upgrades included:

- 2740mm raised ceilings throughout
- 3287mm feature raised ceiling in master suite
- Luxurious kitchen upgrades selected with 40mm stone benchtops with waterfall ends to the island bench. Including undermount sink, integrated dishwasher and rangehood plus microwave trim
- Vinyl flooring to main living spaces with carpet to all bedrooms
- Blinds, curtains and shutters as displayed
- Fully fenced, with landscaping all inclusive
- Ducted air conditioning throughout

Home design:

Balmoral 218
Salisbury façade

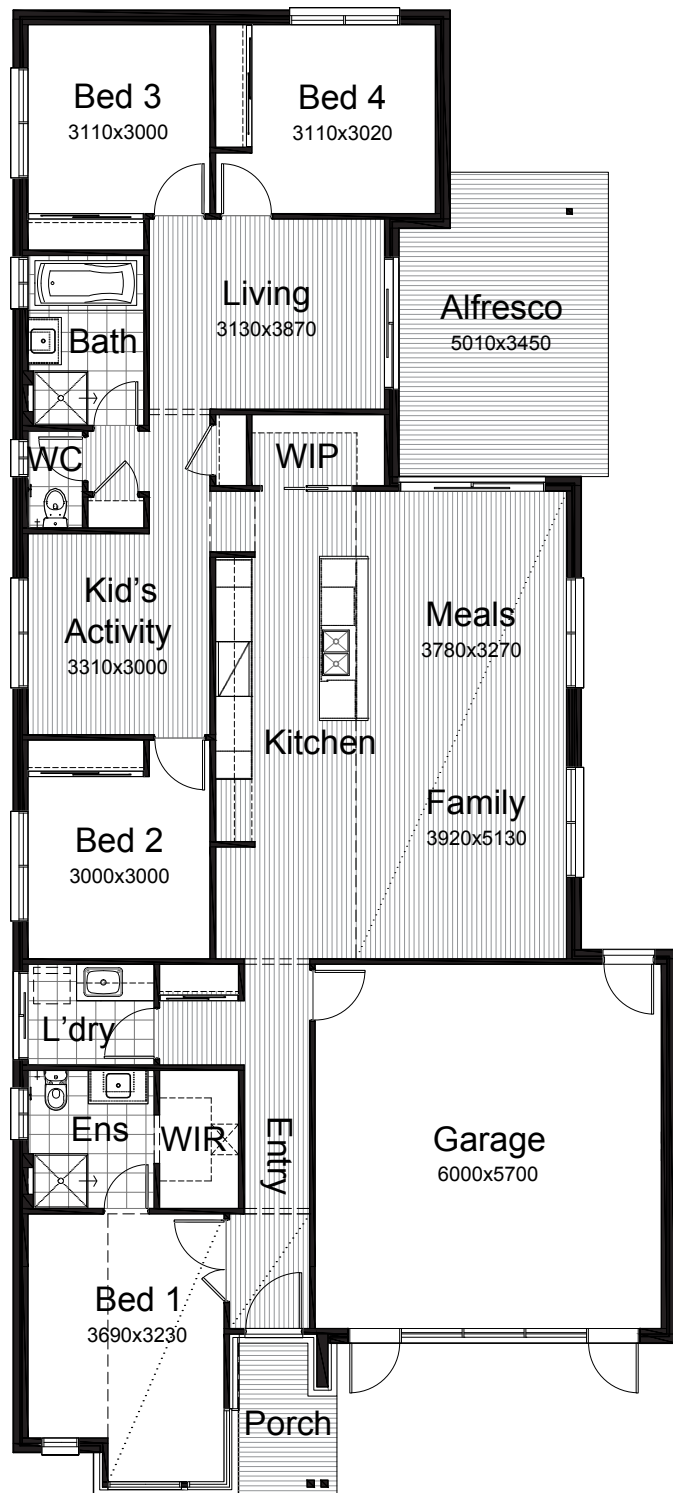
Address:

32 Ridge Parade
Ridgeview Estate
Narangba

Land size:

375m²

Displayed home width	10.91m	
Displayed home length	24.47m	
Residence	166.28m ²	17.90sq
Porch	4.08m ²	0.44sq
Alfresco	13.29m ²	1.43sq
Garage	37.44m ²	4.03sq
Total	221.09m²	23.80sq



Images for illustrative purposes only and may contain furniture not included in the home price.

*7% return on investment for the life of the lease. Subject to developer design approval. Conditions apply. All photos and illustrations are representative only. All designs are the property of Burbank and must not be used, reproduced, copied or varied, wholly or in part without written permission from an authorised Burbank representative. Burbank Australia (Qld) Pty Ltd. ABN 77 103 014 615. QBCC 1046544.