



<b>Facades available:</b>	
Coastal, Delta, Kingston, Nouveau	
Salisbury, Traditional, York	
<b>Overall home width</b>	<b>11.27m</b>
<b>Overall home length</b>	<b>22.91m</b>

Residence	167.3m <sup>2</sup>	18.0sq
Garage	37.4m <sup>2</sup>	4.0sq
Porch	3.2m <sup>2</sup>	0.3sq
Alfresco	12.1m <sup>2</sup>	1.3sq
<b>Total</b>	<b>220.0m<sup>2</sup></b>	<b>23.7sq</b>

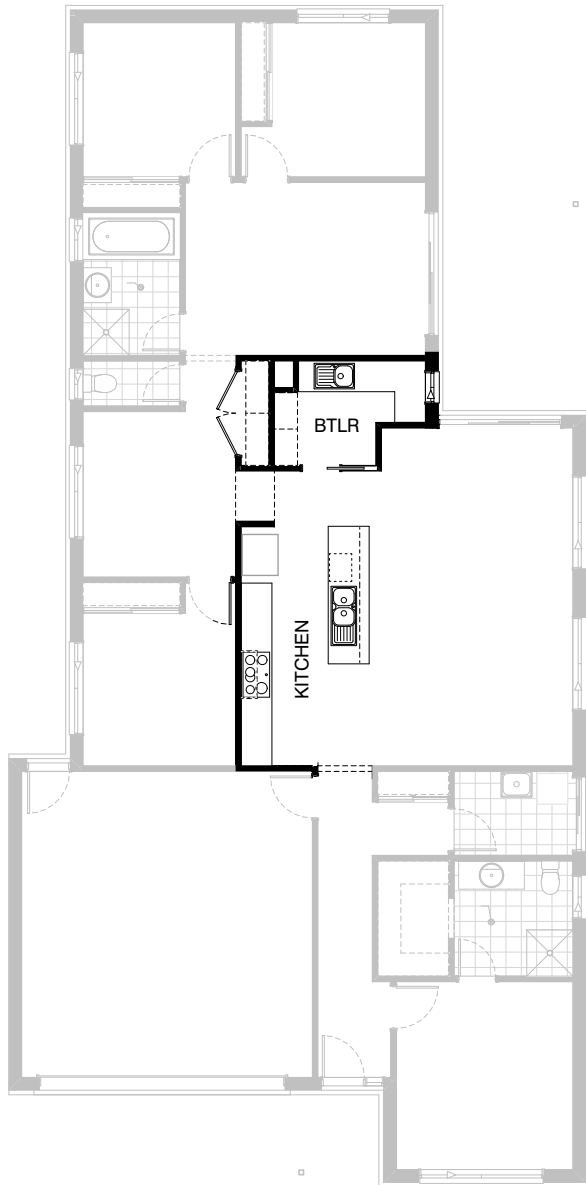
**FLOORPLAN OPTIONS**

We personalise our floorplans. Talk to us about our huge range of ready-to-go design options.

Listed details based on Traditional facade floorplan (illustrated)

\*Copyright conditions. All photos and illustrations are representative only. Floor plans and specifications may be varied by Burbank without notice, the dimensions are diagrammatic only and a Building Contract with final drawings will display correct dimensions and detail. All designs are the property of Burbank and must not be used, reproduced, copied or varied, wholly or in part without written permission from an authorised Burbank representative. Copyright Burbank Australia (QLD) Pty Ltd. ABN 77 103 014 615. QBCC 1046544.

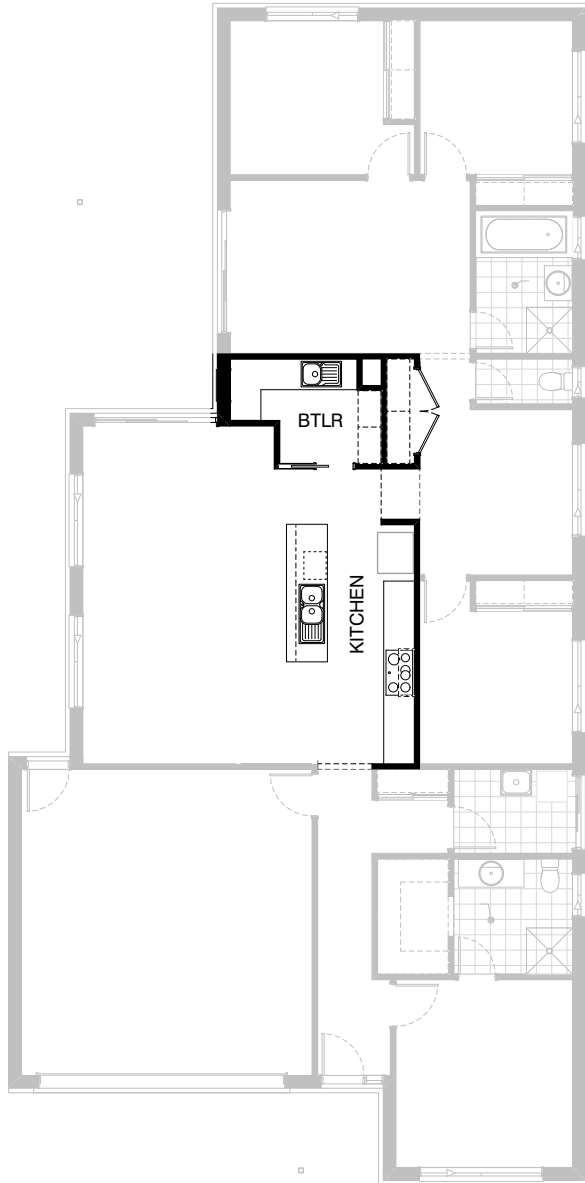
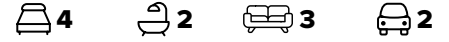
**Call 13 BURBANK**  
**Visit [burbank.com.au](http://burbank.com.au)**



### Option Kitchen01

Provide Kitchen and Butlers pantry upgrade including relocating Ref space,  
 1no. 900mm under bench oven with cooktop & retractable rangehood,  
 1No. laminated DW provision,  
 1No. MW provision with pot drawer,  
 1No. 450mm drawer unit,  
 1No. 900mm base cupboard,  
 2No. 600mm base cupboards,  
 2No. 700mm base cupboards,  
 1No. 600mm Blind carcass,  
 1No. 800mm base cupboard,  
 2No. 450mm base cupboards,  
 Provide 450mm shelves to Butlers pantry as required.  
 Add 720mm cavity sliding door to Butlers.  
 Additional 32mm laminate benchtop and 1no. bowl sink with drainer and tiled splashback to suit in Butlers.  
 Extend Linen to rear passage to suit.  
 Add ASW1006 aluminium sliding window to Butlers pantry

NOTE:  
 Option does not work with External01 & Kitchen02



## Option Kitchen02

Provide Kitchen and Butlers pantry upgrade including relocating Ref space,  
 1no. 900mm under bench oven with cooktop & retractable rangehood,  
 1No. laminated DW provision,  
 1No. MW provision with pot drawer,  
 1No. 450mm drawer unit,  
 1No. 900mm base cupboard,  
 2No. 600mm base cupboards  
 2No. 700mm base cupboards,  
 1No. 600mm Blind carcass,  
 1No. 800mm base cupboard,  
 2No. 450mm base cupboards,  
 Provide 450mm shelves to Butlers pantry as required.  
 Add 720mm cavity sliding door to Butlers.  
 Additional 32mm laminate benchtop and 1no. bowl sink with drainer and tiled splashback to suit in Butlers.  
 Extend Linen to rear passage to suit.  
 Add ASW1006 aluminium sliding window to Butlers pantry

NOTE:  
 Option can ONLY selected in conjunction with External01



### Option Laundry01

Provide Laundry upgrade with laminated cupboards and stainless steel insert trough, 2No. 700mm base cupboards, 2No. 700mm overhead cupboards, with additional tiled splashback and benchtop to suit. Washing machine water taps concealed within cabinetry.



### Option External01

Provide mirrored rear section of the home with WIP and Study to swap locations.  
Provide 450mm shelves and 720mm cavity sliding door to new WIP as required.



### Option External02

Provide Grand Alfresco option with additional light point.  
Additional 1no. 88mm x 88mm painted timber post and  
tiled roof above.

Option adds 10.71m<sup>2</sup> to overall house area.

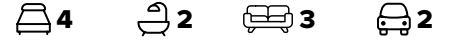


### Option Ensuite01

Provide Ensuite option with access from Bed 1 directly to WIR.

Additional 720mm hinged door to WIR

NOTE:  
Option cannot be selected with Internal04



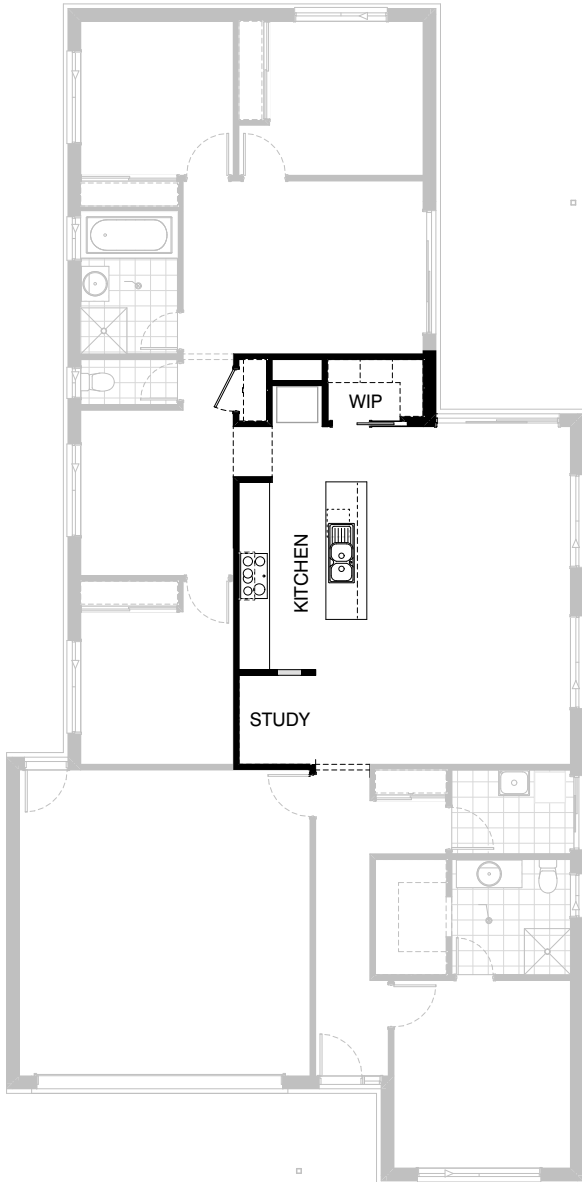
### Option Ensuite02

Provide Ensuite upgrade with alternate layout  
900mm x 1800mm tiled shower base.  
1782 vanity unit with double basins.  
Add 720mm cavity sliding door to Ensuite.  
Add ASW1806 aluminium sliding window to Ensuite  
Laundry sliding door and Family/Meals windows  
adjusted to suit.

Option extends WIR and Ensuite by 600mm into  
Family/Meals area.

**NOTE:**  
Option cannot be selected in with External01 &  
Kitchen02

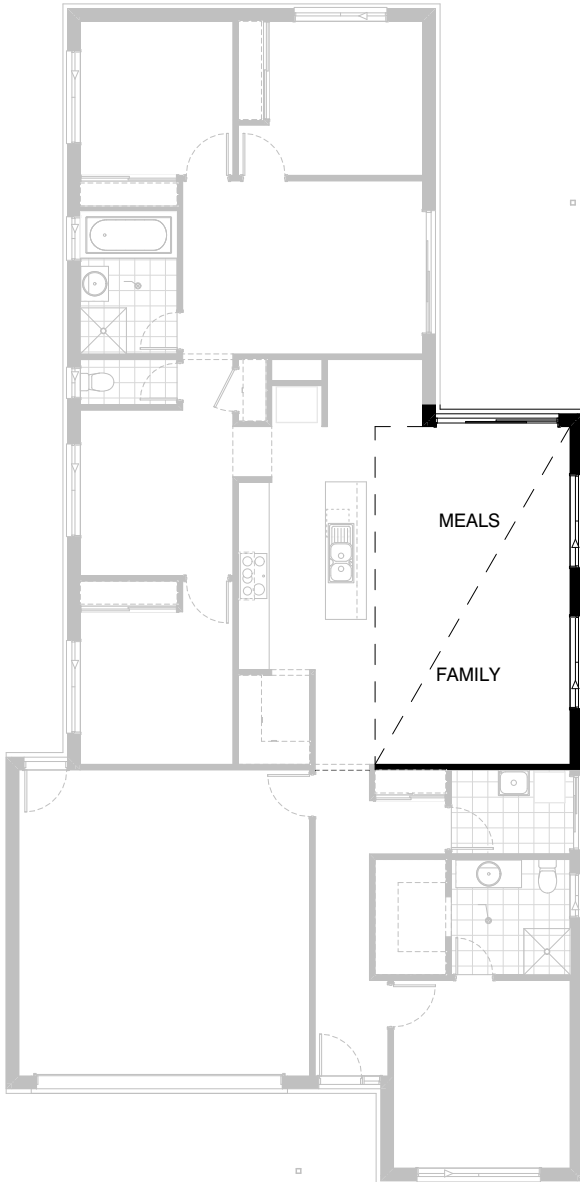




### Option Internal01

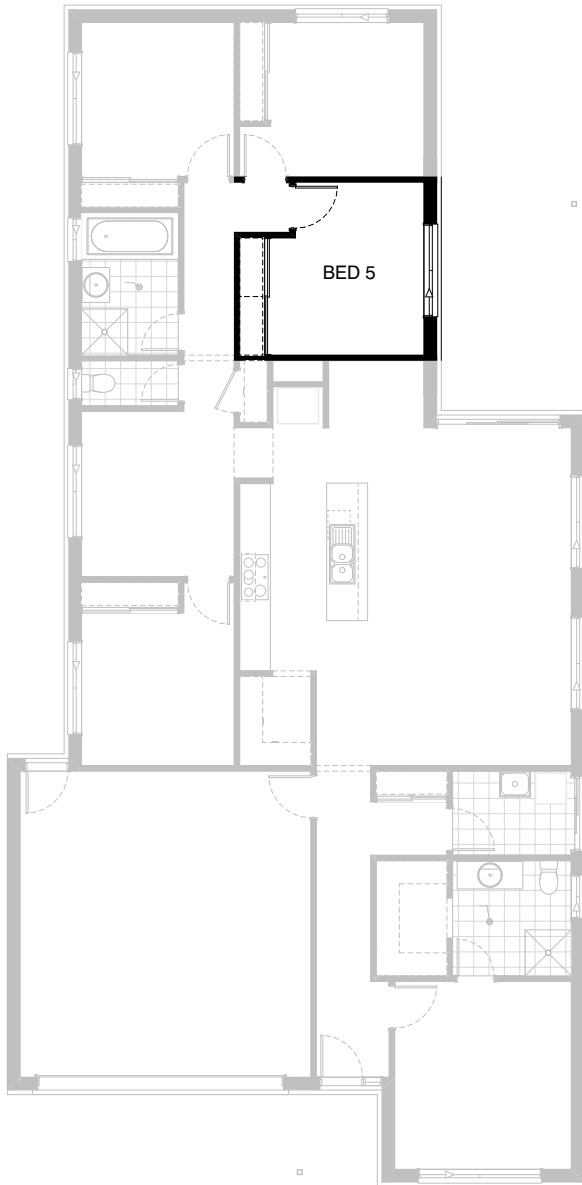
Provide option whih swaps the location of WIP and Study as shown.  
Add 720mm cavity sliding door to WIP.  
1200mm high x 450mm wide cut out opening to study side wall.

NOTE:  
Option cannot be selected in with External01 & Kitchen02



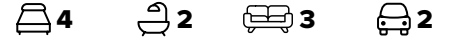
### Option Internal02

Provide Raked ceiling option to Meals and Family with bulkhead and standard ceiling to Kitchen.



### Option Internal03

Provide 5th bedroom option in lieu of living,  
Add built in robe with Gyprock sliding doors and 450m shelf.  
Additional 820mm hinged door.  
Add ASW1218 aluminium sliding window.



### Option Internal04

Provide floor plan option with Bed 1 to the rear of the home.  
Provide 982mm wide vanity unit to Ensuite.  
Add ASW1224 aluminium sliding window to Bed 1

Option reduces length of Family/Meals by 240mm.  
Moves Living to Bed 4 to the front of the home.  
Reduce Linen cupboard width by 130mm.  
Bed 3 moves into previous Living area.

NOTE:  
Option cannot be selected in with External01 & Kitchen02