



GROUND FLOOR

FIRST FLOOR

**FLOORPLAN OPTIONS**

We personalise our floorplans. Talk to us about our huge range of ready-to-go design options.

**Facades available:**

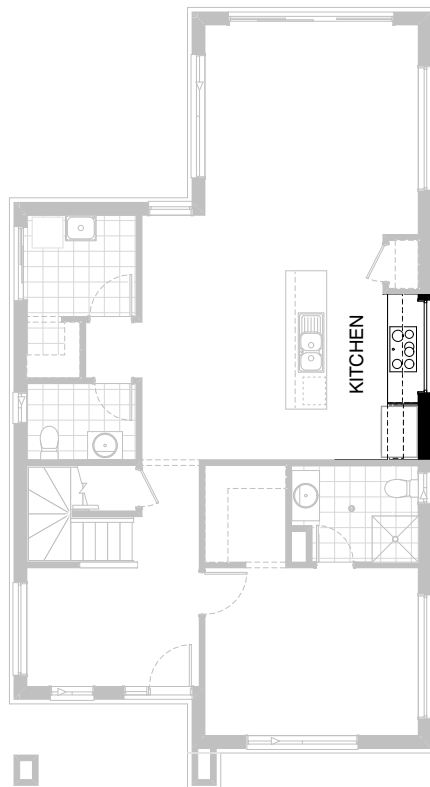
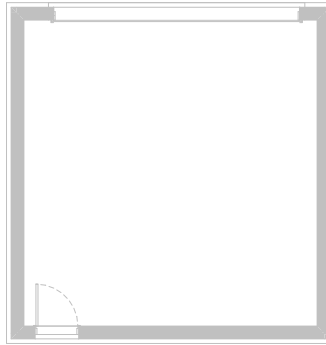
Kingston, Nouveau, Traditional	
Urban	
<b>Overall home width</b>	<b>9.95m</b>
<b>Overall home length</b>	<b>24.72m</b>

Residence	176.5m <sup>2</sup>	19.0sq
Garage	40.4m <sup>2</sup>	4.3sq
Porch	5.8m <sup>2</sup>	0.6sq
Alfresco	14.6m <sup>2</sup>	1.6sq
<b>Total</b>	<b>237.3m<sup>2</sup></b>	<b>25.6q</b>

Listed details based on Traditional facade floorplan (illustrated)

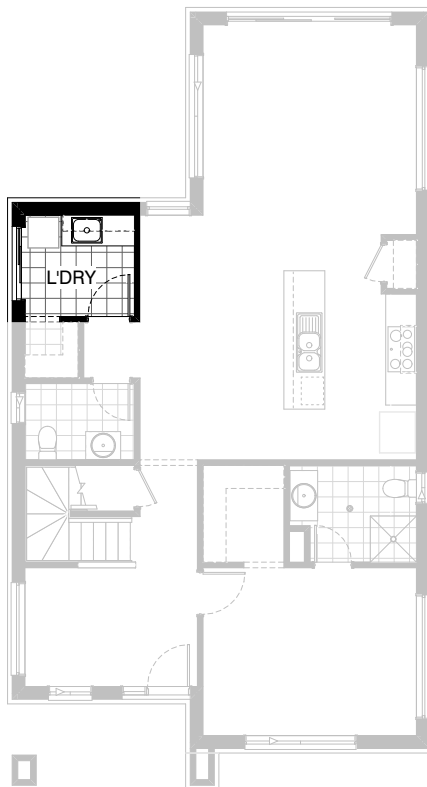
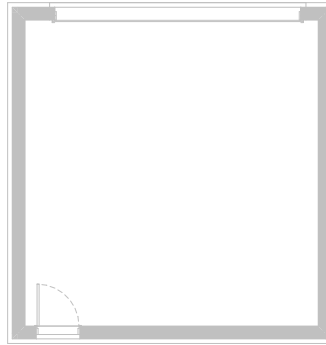
\*Copyright conditions. All photos and illustrations are representative only. Floor plans and specifications may be varied by Burbank without notice, the dimensions are diagrammatic only and a Building Contract with final drawings will display correct dimensions and detail. All designs are the property of Burbank and must not be used, reproduced, copied or varied, wholly or in part without written permission from an authorised Burbank representative. Copyright Burbank Australia (QLD) Pty Ltd. ABN 77 103 014 615. QBCC 1046544.

**Call 13 BURBANK**  
**Visit [burbank.com.au](http://burbank.com.au)**



### Option Kitchen01 GF

Provide Kitchen upgrade option which the following  
 16mm laminated end panel,  
 1No. 1064mm open shelf above Ref space,  
 2No. 600mm overhead cupboards,  
 1No. 514x1810mm fixed aluminium window to splashback,  
 Island bench to remain standard.



## Option Laundry01 GF

Provide Laundry upgrade including laminate base and overhead cupboards and stainless steel inset trough including  
1No. 900mm base cupboards,  
1No. 900mm overhead cupboards,  
1No. 450mm base cupboards,  
1No. 450mm overhead cupboards and  
additional benchtop and tiled splashback to suit.