

Facades available:	
Coastal, Delta, Kingston, Nouveau	
Salisbury, Traditional, York	
Overall home width	12.47m
Overall home length	20.51m

Residence	162.1m ²	17.5sq
Garage	38.8m ²	4.2sq
Porch	5.7m ²	0.6sq
Alfresco	11.2m ²	1.2sq
Total	217.9m²	23.5sq

FLOORPLAN OPTIONS

We personalise our floorplans. Talk to us about our huge range of ready-to-go design options.

Listed details based on Traditional facade floorplan (illustrated)

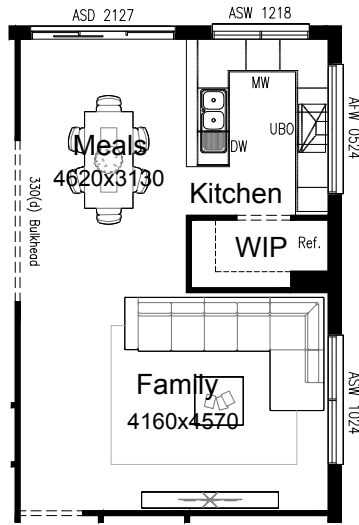
*Copyright conditions. All photos and illustrations are representative only. Floor plans and specifications may be varied by Burbank without notice, the dimensions are diagrammatic only and a Building Contract with final drawings will display correct dimensions and detail. All designs are the property of Burbank and must not be used, reproduced, copied or varied, wholly or in part without written permission from an authorised Burbank representative. Copyright Burbank Australia (QLD) Pty Ltd. ABN 77 103 014 615. QBCC 1046544.

Call 13 BURBANK
Visit burbank.com.au



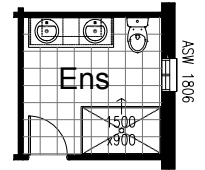
OPTION K1

Provide U-shaped Kitchen upgrade including 900mm canopy rangehood, 900mm electric cooktop, 600mm under bench oven, 450mm drawer unit, dishwasher provision, microwave provision with pot drawer, 2No. 800mm base cupboards, 2No. 900x900mm base corner cupboards, 450mm base cupboard, additional bench top and tiled splashback to suit. AFW0524 aluminium fixed window and ASW1218 aluminium sliding window as shown.



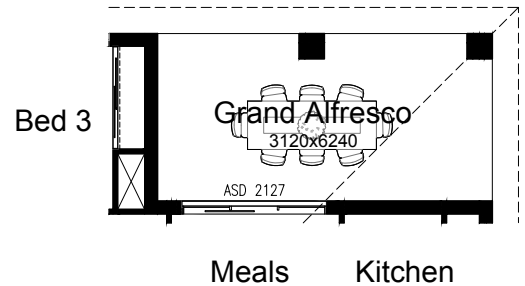
OPTION ENS1

Provide Ensuite upgrade by relocating toilet and shower position and providing 1582mm vanity basin with double basins and 900x1500mm tiled shower base in lieu of standard.



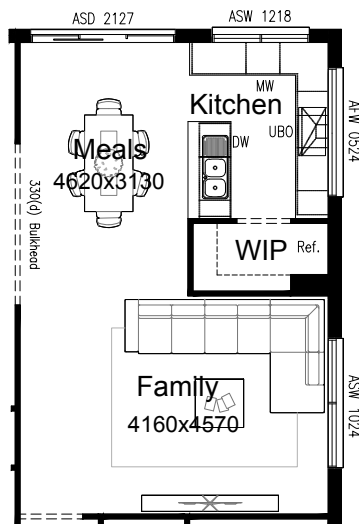
OPTION EP1

Provide Grand Alfresco under dwelling roof line with structural concrete slab, additional 2no. brick piers in lieu of standard 1no. 90mm x 90mm timber post. Increases Alfresco area by 8.24m².



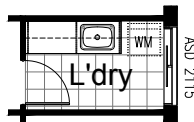
OPTION K2

Provide L-shaped Kitchen upgrade including 900mm canopy rangehood, 900mm electric cooktop, 600mm under bench oven, 450mm drawer unit, dishwasher provision, microwave provision with pot drawer, 2No. 800mm base cupboards, 900x900mm base corner cupboard, 1000mm base cupboard, 450mm base cupboard, 300mm base cupboard, additional bench top and tiled splashback to suit. AFW0524 aluminium fixed window and ASW1218 aluminium sliding window as shown.



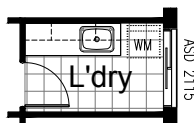
OPTION LD1

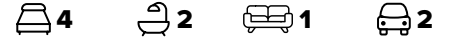
Provide prefabricated laminated laundry trough cabinet with insert trough including 800mm base cupboard, 900mm base cupboard, 800mm overhead cupboard and 900mm overhead cupboard, additional benchtop and tiled splashback to suit.



OPTION LD2

Provide prefabricated laminated laundry trough cabinet with insert trough including 800mm base cupboard, 900mm base cupboard, 2No. 450mm overhead cupboards, 800mm overhead open shelf with hanging rail, additional bench top and tiled splashback to suit.





OPTION EP2

Provide Floor Plan option including a mirrored rear section of the home.
Note: Option increases overall house length through Family and Porch by 1090mm. Rear Passage and Bed 2 increases in width by 70mm. Island bench now to Kitchen in lieu of Galley-style

