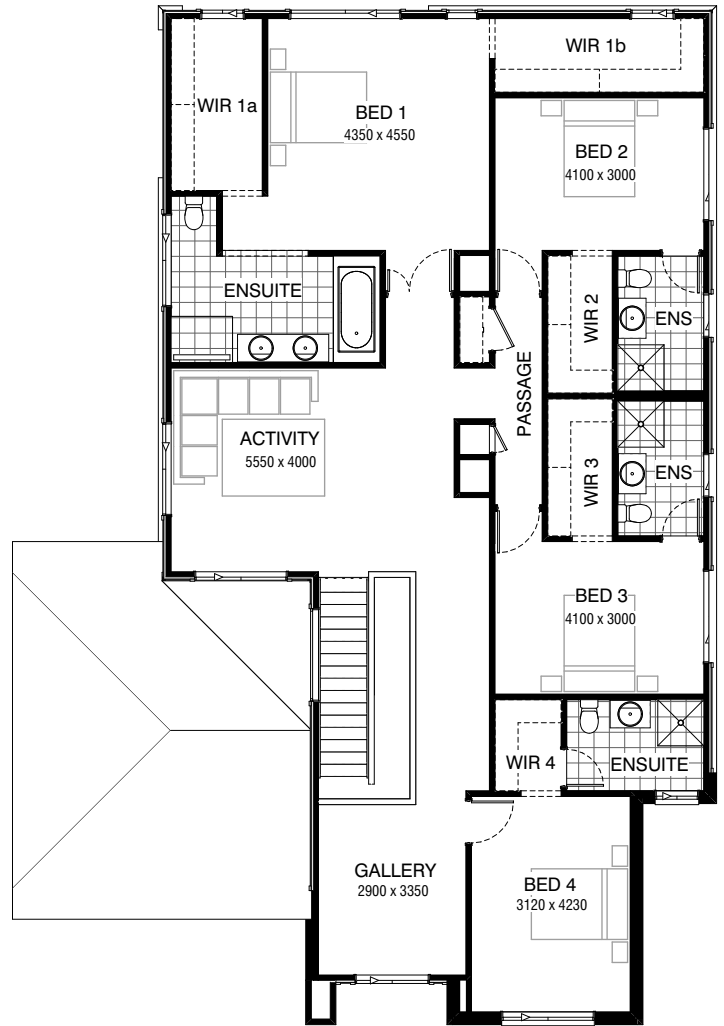




GROUND FLOOR



FIRST FLOOR

FLOORPLAN OPTIONS

We personalise our floorplans. Talk to us about our huge range of ready-to-go design options.

Facades available:

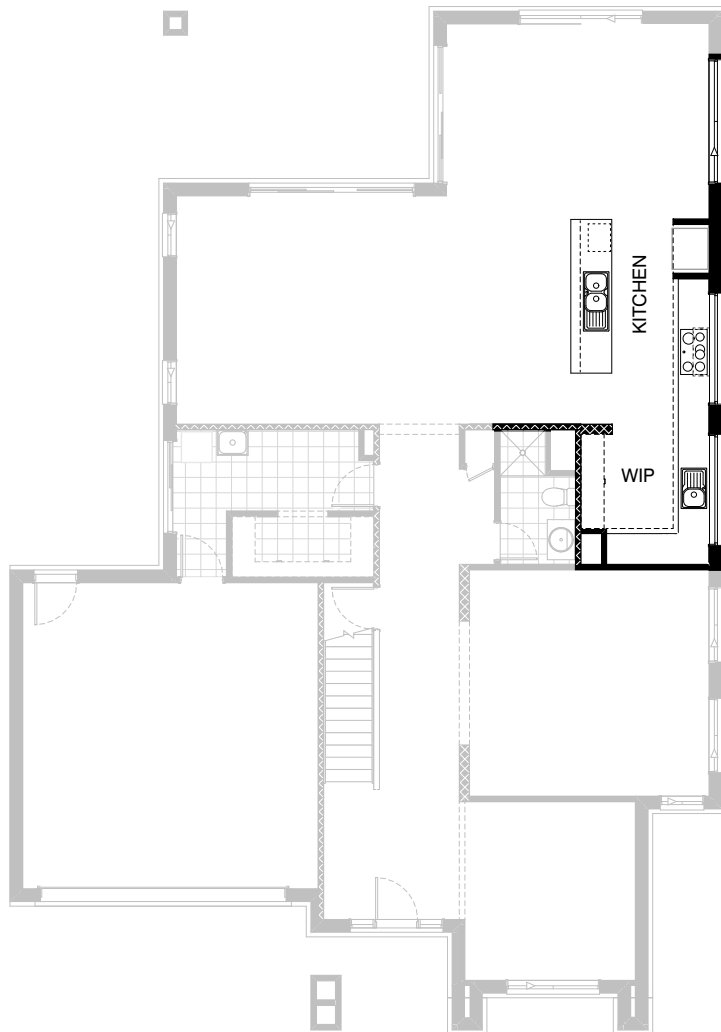
Kingston, Metro, Nouveau	
Traditional, Urban	
Overall home width	13.91m
Overall home length	19.90m

Residence	342.9m ²	36.9sq
Garage	38.3m ²	4.1sq
Porch	5.3m ²	0.6sq
Alfresco	17.7m ²	1.9sq
Total	404.2m²	43.5sq

Listed details based on Traditional facade floorplan (illustrated)

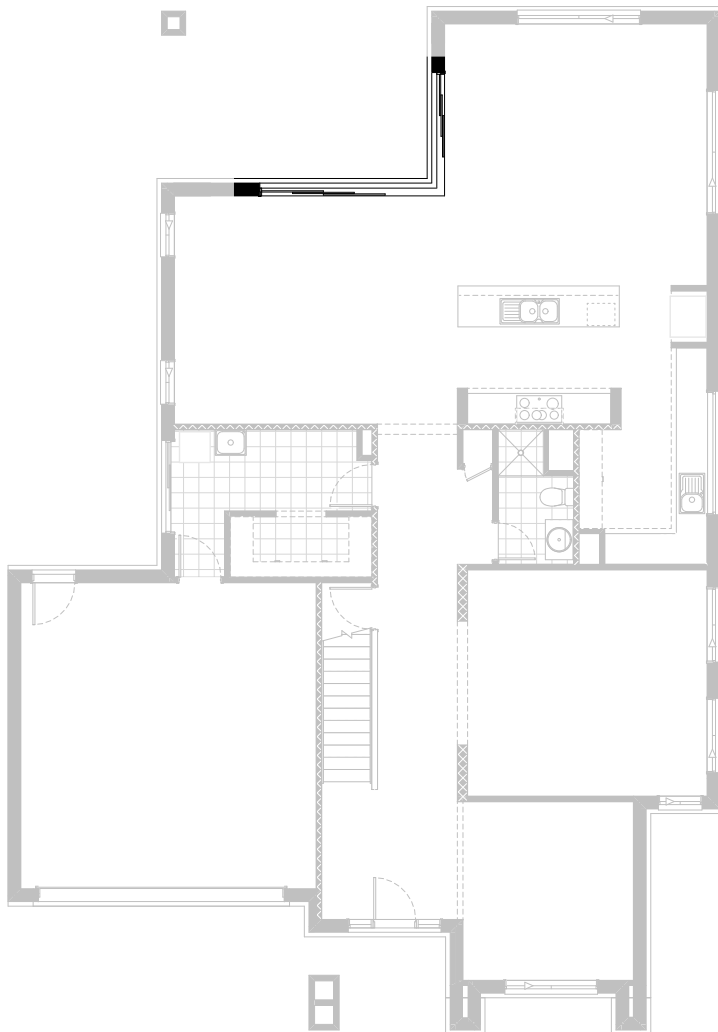
*Copyright conditions. All photos and illustrations are representative only. Floor plans and specifications may be varied by Burbank without notice, the dimensions are diagrammatic only and a Building Contract with final drawings will display correct dimensions and detail. All designs are the property of Burbank and must not be used, reproduced, copied or varied, wholly or in part without written permission from an authorised Burbank representative. Copyright Burbank Australia (QLD) Pty Ltd. ABN 77 103 014 615. QBCC 1046544.

Call 13 BURBANK
Visit burbank.com.au



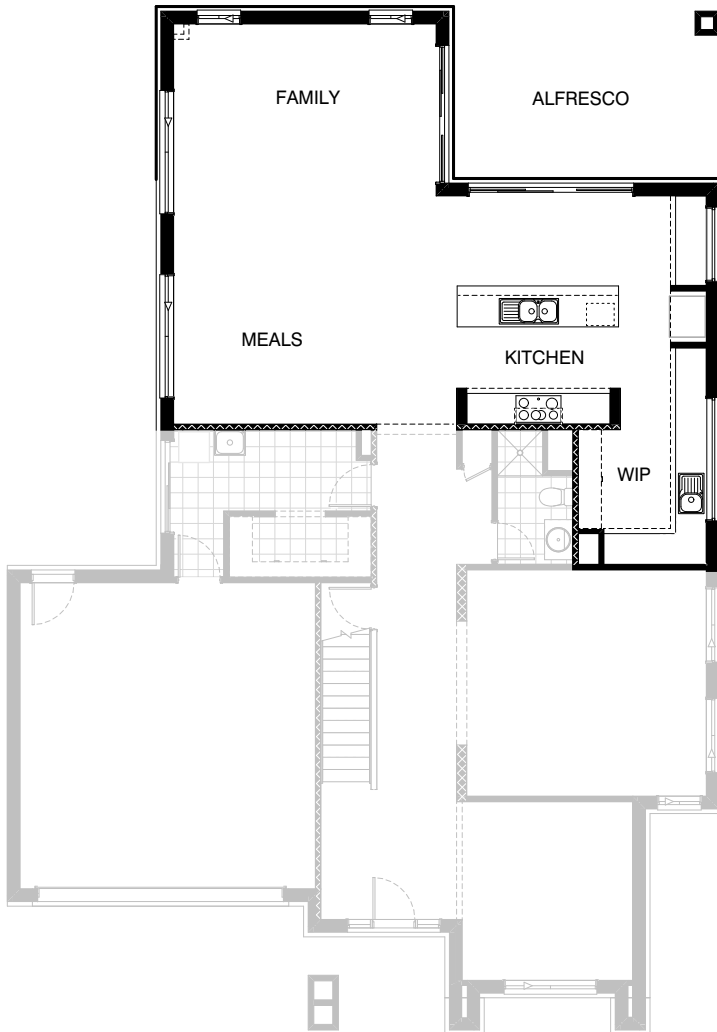
Option Kitchen01

Provide Kitchen option including
 900mm retractable rangehood,
 900mm electric cooktop,
 900mm under bench oven,
 450mm drawer unit,
 dishwasher provision,
 microwave provision with pot drawer,
 1No. 900mm base cupboard,
 2No. 800mm base cupboards,
 1No. 900x900mm base corner cupboards,
 1No. 700mm base cupboard,
 3No. 600mm base cupboards,
 1No. 350mm base cupboard,
 1No. 300mm base cupboard,
 2No. 514x2170mm aluminium frame fixed window,
 additional bench top and tiled splashback to suit.



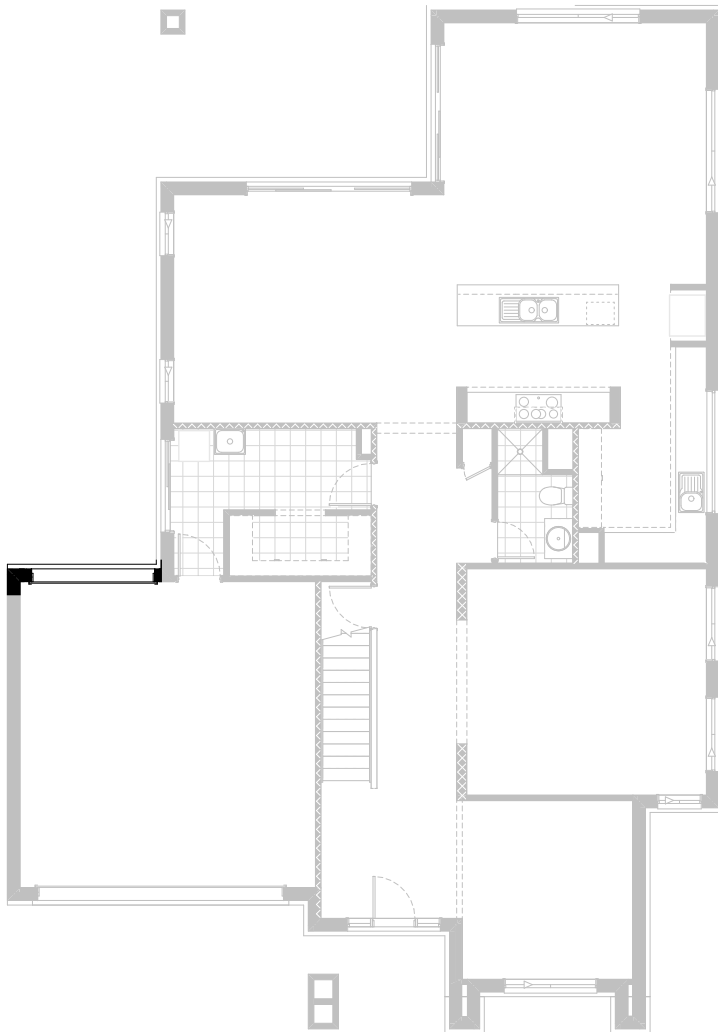
Option External01

Provide corner sliding door option. Replace ASD2127 and ASD2132 sliding doors with ACSD 2124-36 door.



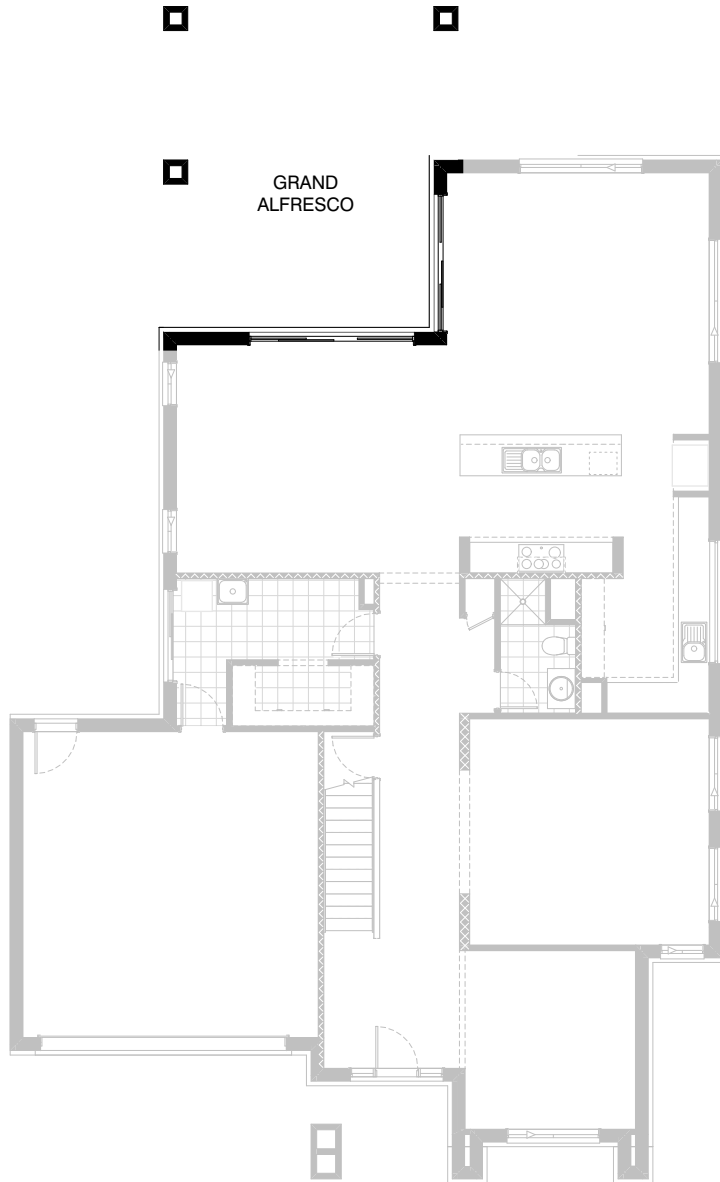
Option External02

Provide mirrored Alfresco option with built-in bench seat with 3No. 570mm drawers and AFW1515 fixed window above.
 Replace ASW2024 window with ASW1224 and move
 2No. ASW2009 windows as shown.
 Box out to corner of new Living (shown dashed) necessary for plumbing stack only if chosen in conjunction with Option Ensuite03 or Internal02.



Option External03

Provide Panel Lift door to rear of Garage.
Replace AED 2108 access entry door with
2100(h)x2400(w) Panel Lift door.



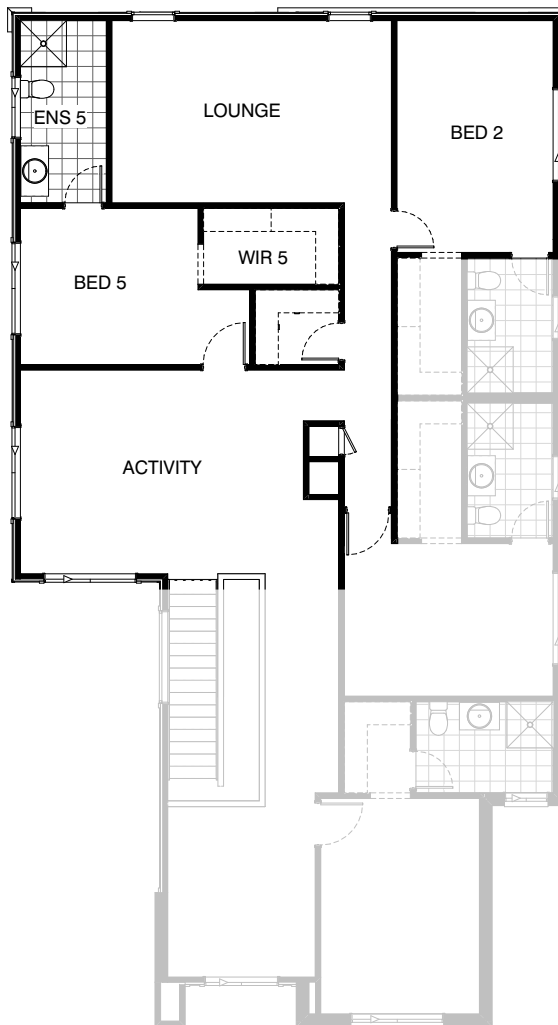
Option External04

Provide Grand Alfresco option including tiled roof, structural concrete slab and 3No. 470x470mm brick piers. Adds 3000mm of length to the building footprint.



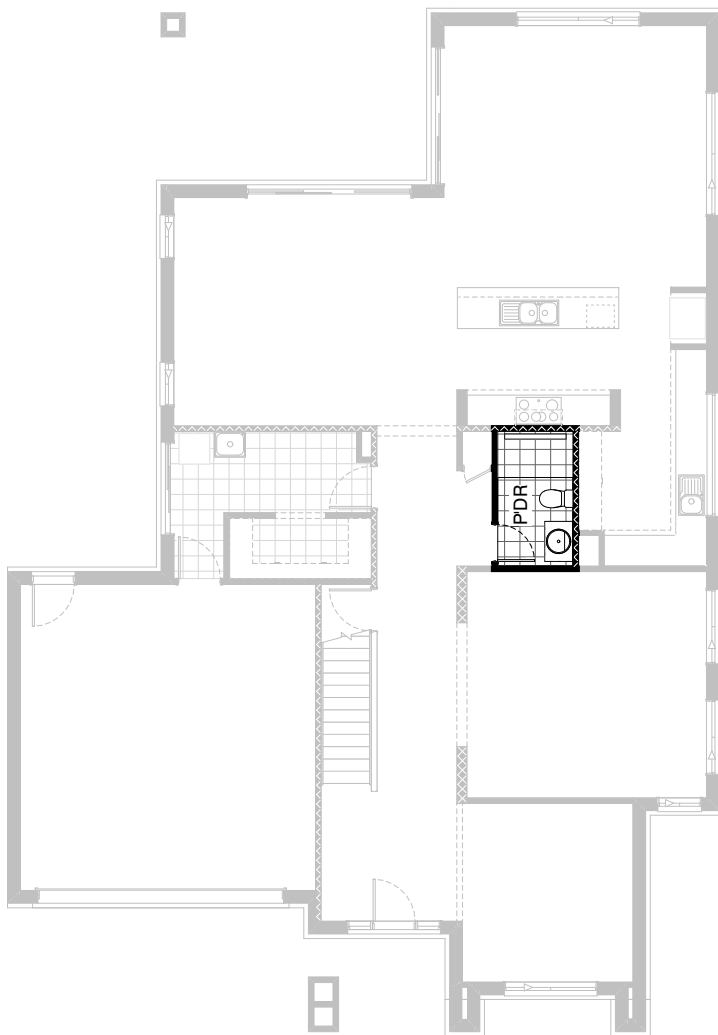
Option Internal01

Provide Bed 1 to Ground Floor option including 1200x900mm tiled shower base, 1675 bath with tiled hob, 1782mm vanity with double basins, enclosed WC with stud and plaster wall with 720mm hinged door, Walk-in Robe with 1No. 450mm shelf with hanging rail



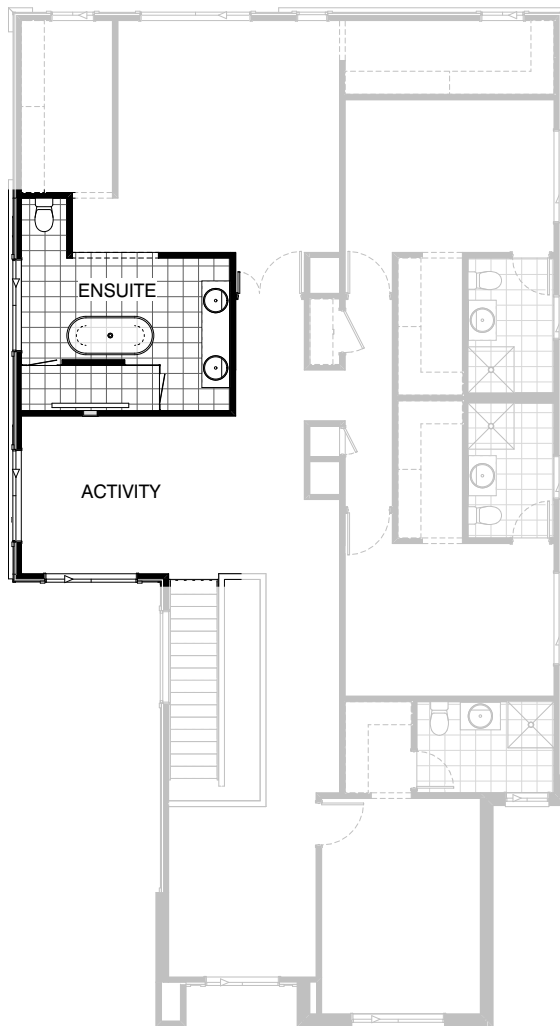
Option Internal02

Provide 5th Bedroom option including Walk-in Robe with 1No. 450mm shelf and hanging rail, Ensuite with 900x900mm tiled shower base, toilet and 982mm vanity with single basin, ASW1012 sliding window, replace ASW2020 and AFW1806 windows with 2No. ASW2009 windows to new Lounge.
 Note: Increase Bed 2 by 1550mm to 4550x3070 and ASW1018 window moves to suit as shown.
 Added Walk-in Linen with 4No. 450mm shelves and 720mm hinged door access from Passage.
 Note: Only available in conjunction with Option Internal01.



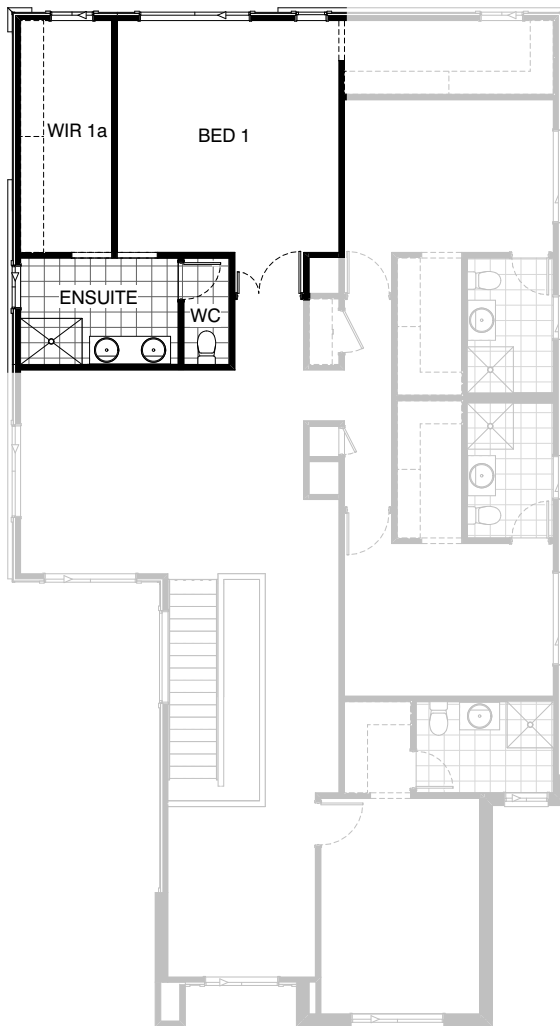
Option Internal03

Provide Powder option where 900x900mm tiled shower base is replaced with 1500x900mm tiled shower base. Remove stud and plaster box-out void.



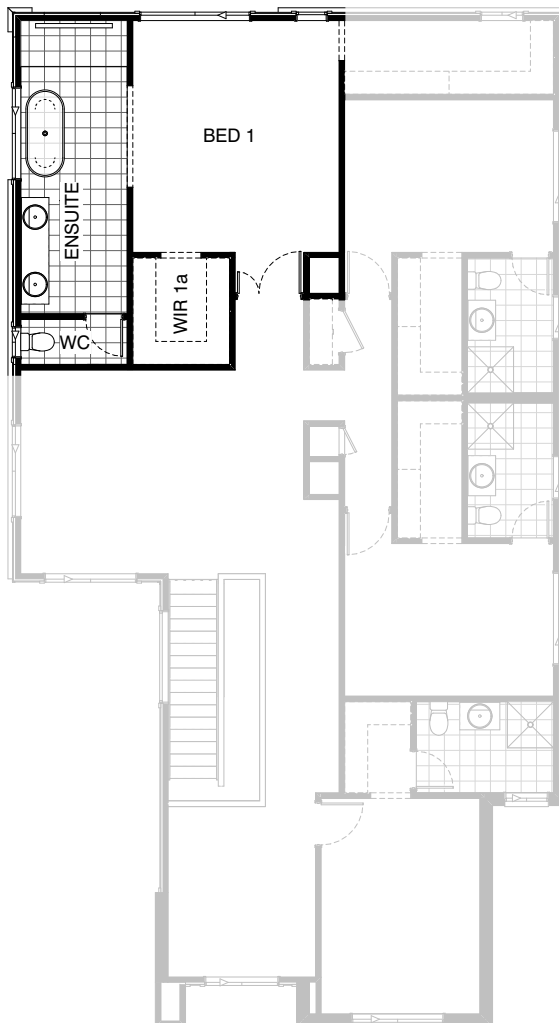
Option Ensuite01

Provide Ensuite upgrade including freestanding bath with 300mm spout, 2700x900mm tiled shower base with 2No. ceiling mounted shower roses, additional mixer tap, 2082mm vanity with double basins, wall recess with 2No. glass shelves and 2No. frameless shower screens.
Note: Reduce Activity by 900mm to 3100x5540mm to suit.



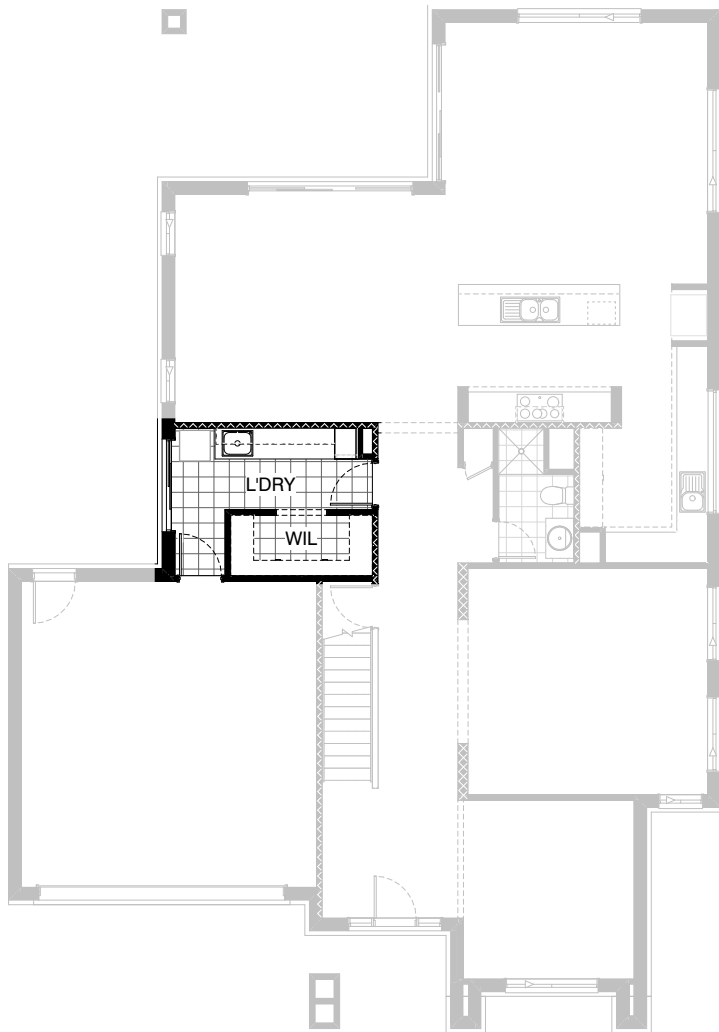
Option Ensuite02

Provide alternative Ensuite layout by deleting bath with hob and provide plaster lined enclosed WC with 1No. 720mm flush panel hinged door and increase walk-in-robe including additional hanging rail and shelf and adjust Bed 1 and WIR openings to suit and provide 1No. 1800mm x 850mm awning window to Ensuite in lieu of standard.



Option Ensuite03

Provide Ensuite upgrade including freestanding bath with 300mm spout, 2100x900mm tiled shower base with 2No. shower roses, 2082mm vanity with double basins, wall recess with 2No. glass shelves and 1No. frameless shower screen, enclosed WC with 720mm hinged door. WIR changes location and decreases in size and Bed 1 decreases in width by 300mm to suit. Add ASW1006 window to new WC and replace ASW0518 window with ASW1218 as shown.



Option Laundry01

Provide Laundry upgrade including laminate base cupboards and stainless steel inset trough including 2No. 800mm base cupboards, 700mm base cupboard, 2No. 800mm overhead cupboards and 700mm overhead cupboard, 400mm broom cabinet, additional benchtop and tiled splashback to suit.