



Facades available:	
Coastal, Delta, Kingston, Nouveau	
Salisbury, Traditional, York	
Overall home width	12.83m
Overall home length	23.63m

Residence	200.2m ²	21.5sq
Garage	37.4m ²	4.0sq
Porch	3.7m ²	0.4sq
Alfresco	13.2m ²	1.4sq
Total	254.5m²	27.4sq

FLOORPLAN OPTIONS

We personalise our floorplans. Talk to us about our huge range of ready-to-go design options.

Listed details based on Traditional facade floorplan (illustrated)

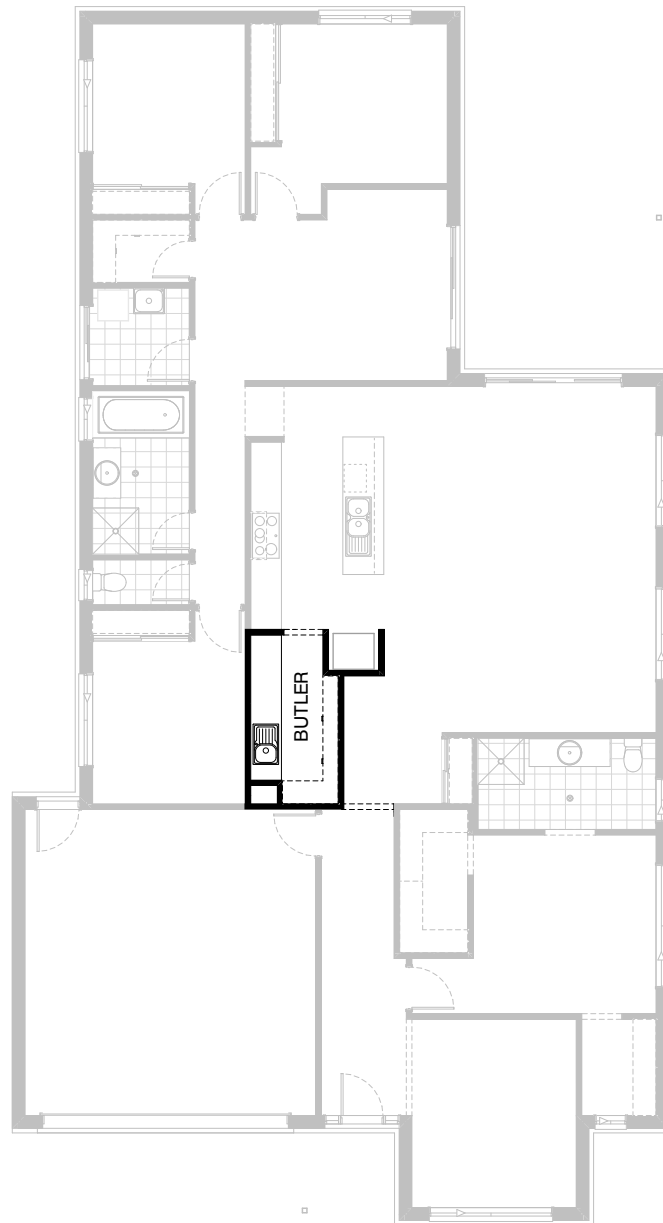
*Copyright conditions. All photos and illustrations are representative only. Floor plans and specifications may be varied by Burbank without notice, the dimensions are diagrammatic only and a Building Contract with final drawings will display correct dimensions and detail. All designs are the property of Burbank and must not be used, reproduced, copied or varied, wholly or in part without written permission from an authorised Burbank representative. Copyright Burbank Australia (QLD) Pty Ltd. ABN 77 103 014 615. QBCC 1046544.

Call 13 BURBANK
Visit burbank.com.au



Option Kitchen01

Provide Kitchen upgrade with alternate layout with relocated ref space.
 1No. 900mm under bench oven with cooktop & retractable rangehood,
 1No. laminated DW provision,
 1No. MW provision with pot drawer,
 1No. 450mm drawer unit,
 1No. 900mm base cupboard,
 2No. 700mm base cupboards,
 2No. 600mm base cupboards,
 Add Store cupboard with 1No. 420mm hinged door and 450mm shelving as required.
 Relocate WIP to Kitchen with 450mm shelves as required.
 Add 1650mm high x 450mm wide cut-out opening to Study side wall.



Option Kitchen02

Provide Kitchen upgrade with alternate layout.
 1No. 900mm under bench oven with cooktop & retractable rangehood,
 1No. laminated DW provision,
 1No. MW provision with pot drawer,
 1No. 450mm drawer unit,
 4No. 900mm base cupboards,
 2No. 700mm base cupboards,
 2No. 600mm base cupboards,
 Adds Butlers to Kitchen with 450mm & 300mm shelves as required.
 Additional 32mm laminate benchtop and 1No. bowl sink with drainer
 and tiled splashback to suit in Butlers.



Option Kitchen03

Provide Kitchen upgrade with alternate 'U' shaped layout.
 1No. 900mm under bench oven with cooktop & retractable rangehood,
 1No. laminated DW provision,
 1No. MW provision with pot drawer,
 1No. 450mm drawer unit,
 1No. 900mm base cupboard,
 2No. 700mm base cupboards,
 1No. 400mm base cupboard,
 2No. 900mm corner carcass,
 1No. 600mm base cupboard,
 Additional 32mm laminate benchtop and tiled splashback to suit.
 Reloacte entry into rear passage.
 Swap locations of Bath and WC to accomodate changes as required.



Option Kitchen04

Provide Kitchen upgrade with alternate 'L' shaped layout.
 1No. 900mm under bench oven with cooktop & retractable rangehood,
 1No. laminated DW provision,
 1No. MW provision with pot drawer,
 1No. 450mm drawer unit,
 1No. 900mm base cupboard,
 3No. 700mm base cupboards,
 1No. 350mm base cupboard,
 1No. 900mm corner carcass,
 1No. 400mm base cupboard,
 Additional 32mm laminate benchtop and tiled splashback to suit.
 Reloacte entry into rear passage.
 Swap locations of Bath and WC to accomodate changes as required.



Option Ensuite01

Provide Ensuite upgrade option that replaces standard 900mm x 900mm tiled shower base with 1800mm x 900mm tiled shower base and 1582mm vanity with double basins in lieu of single basin.



Option Ensuite02

Provide Ensuite upgrade option that swaps locations of 900mm x 900mm tiled shower base and Wc pan. Includes enclosed WC with 720mm hinged door and 1282mm vanity with double basins in lieu of standard 1582mm vanity. Replace ASW1809 window with ASW1806.



Option Ensuite03

Provide Ensuite upgrade to be used in conjunction with Internal01 only.

Includes rearranged layout and removes enclosed WC, includes 1900mm x 900mm tiled shower base in lieu of standard and 600mm nib wall for toilet roll holder.



Option Ensuite04

Provide upgrade Ensuite option including 1910x900mm tiled shower base and 1782mm vanity with double basins. Option also removes standard Robe from other side of Bed 1 and Linen cupboard from Laundry and adds space and shelving to Walk-in Robe, also additional 400mm deep Linen cupboard with 620mm hinged door to Bed 1 hallway.

Note: Option Ensuite04 only available in conjunction with Option Internal05.



Option Ensuite05

Provide upgrade Ensuite option including 1200x900mm tiled shower base, freestanding bath and 1582mm vanity with double basins. Option also removes standard Robe from other side of Bed 1 and Linen cupboard from Laundry and adds space and shelving to Walk-in Robe, also additional 400mm deep Linen cupboard with 620mm hinged door to Bed 1 hallway. Option also takes 260mm from length of Activity and adds to Bed 1.

Note: Option Ensuite05 only available in conjunction with Option Internal05.



Option Ensuite06

Provide upgrade Ensuite option including 1500x900mm tiled shower base and 1582mm vanity with double basins.

Note: Option Ensuite06 only available in conjunction with Option External04.



Option External01

Provide floor plan option with mirrored rear section of the home. Option takes 260mm of length from Living and WIR to front of home, adds 1390mm to length of Meals/Family and takes 360mm of width from Meals/Family replacing 1No. ASW2018 with 2No. ASW2009 windows, Bed 2 reduces in length by 200mm, replace Walk-in Linen with standard Linen cupboard in Laundry. Option adds 120mm of length to the overall floor plan but reduces overall footprint by 1.87m².



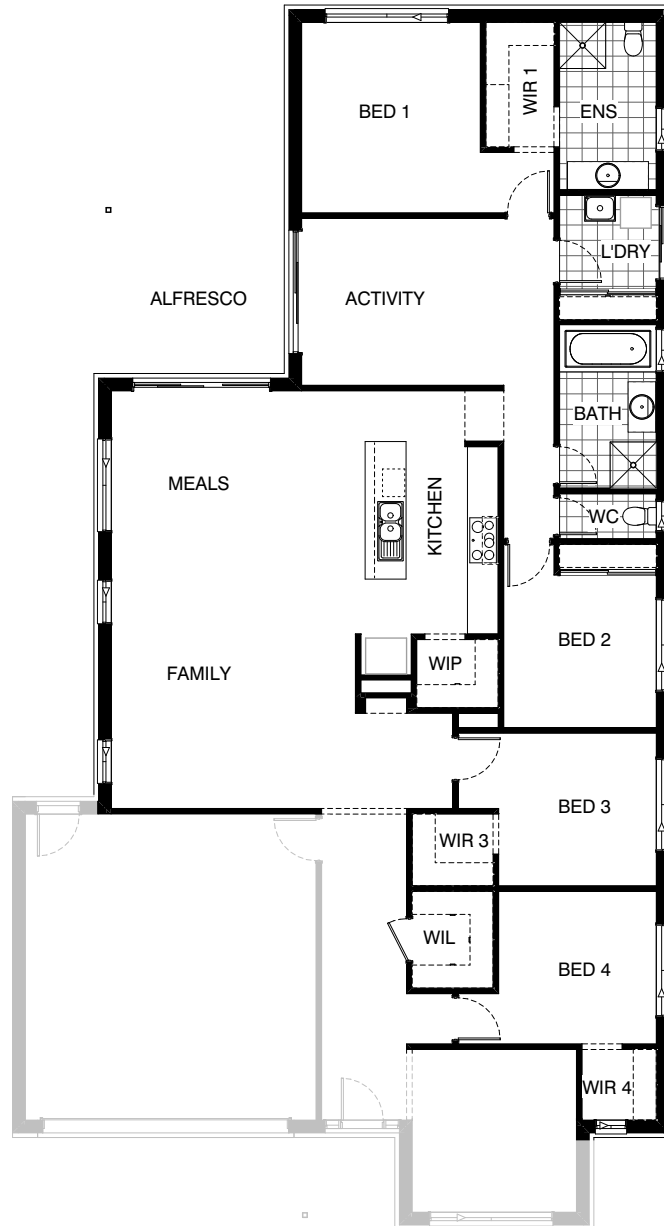
Option External02

Provide Grand Alfresco option with additional light point, 1No. 88x88 painted timber post and tiled roof above. Option adds 15.67m² to the overall house area.



Option External03

Provide corner sliding door option by replacing ASD2124 and ASD2127 sliding door with ACSD2136-24. Create 900mm wide opening between Activity and Meals with no bulkhead as shown.



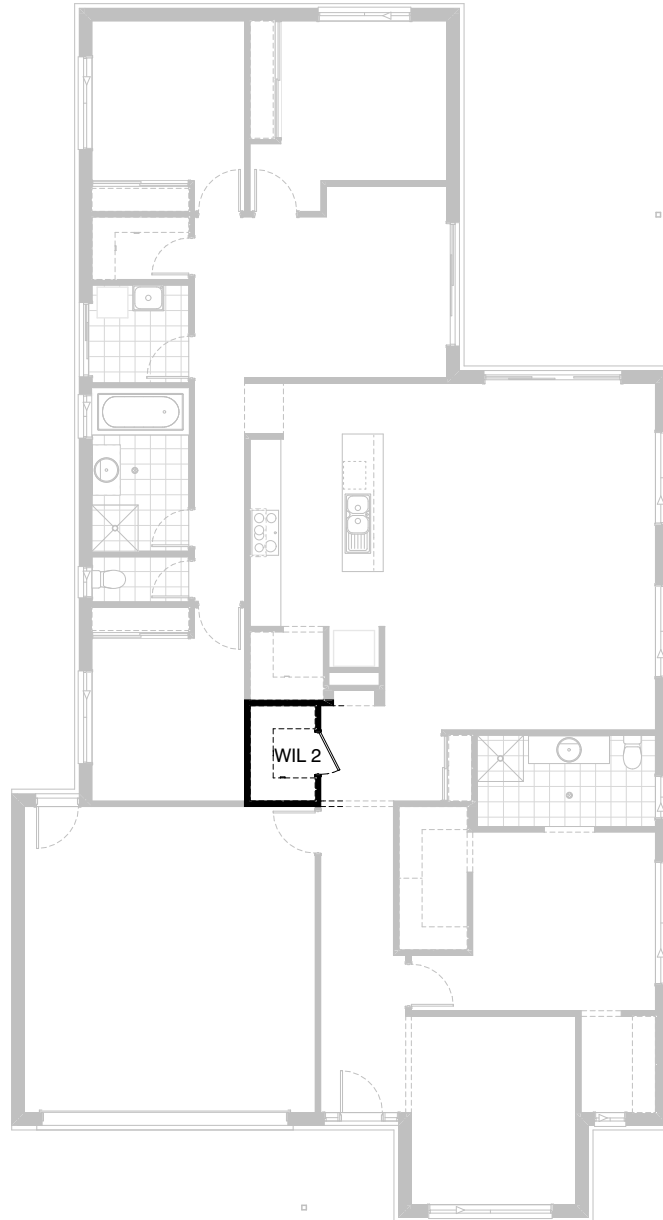
Option External04

Provide floor plan option with mirrored rear section of the home including Bed 1 to rear of the home. Option reduces length of Living and WIR to front of home by 500mm, adds 1390mm to length of Meals/Family and takes 360mm of width from Meals/Family replacing 1No. ASW2018 with 2No. ASW2009 windows, Bed 2 reduces in length by 200mm, replace Walk-in Linen with standard Linen cupboard to Laundry with sliding Robe doors and 4No. 450mm shelves. Beds 3 and 4 move to replace Bed 1 behind Living as shown. Walk-in Linen moved to Entry. Option adds 120mm of length to the overall floor plan but reduces overall footprint by 1.87m².



Option Internal01

Provide floor plan option with alternative Bed 1/Ensuite /WIR layout as shown. Includes enclosed WC with 720mm hinged door and 982mm vanity with single basin. Replace ASW1024 window with ASW2021, ASW1809 with ASW1806, and additional 520mm door to Bed 1 entry. Option adds 1.44m² to Bed 1.



Option Internal02

Provide floor plan option providing Walk-in Linen in lieu of Study nook.
Includes 720mm hinged door and 4No. 450mm shelves.



Option Internal03

Provide floor plan option that creates a 900mm wide opening between Activity and Meals with 330mm deep bulkhead as shown.



Option Internal04

Provide 5th Bedroom option in lieu of Living. Including 820mm hinged door, built-in Robe with sliding doors and 4No. 450mm shelves.



Option Internal05

Provide floor plan option with Bed 1 to rear of the home. Option reduces length of Family/Meals by 190mm, length of Activity by 300mm and length of Living and WIR to the front of the home by 500mm. Beds 3 and 4 move to replace Bed 1 behind Living as shown. Walk-in Linen moved to Entry and additional Linen cupboard with sliding Robe doors and 4No. 450mm shelves added to Laundry.



Option Internal06

Provide Powder room option in lieu of Walk-in Linen. Option includes additional WC pan, 682mm vanity with single basin and 720mm hinged door. Standard Linen cupboard provided with sliding Robe doors and 4No. 450mm shelves. Option reduces Bed 3 WIR length by 120mm to accommodate.

Note: Option Internal06 only available in conjunction with Option Internal05 and External04.



Option Laundry01

Provide Laundry upgrade including laminate cupboards and stainless steel inset trough including 700mm and 300mm base cupboard, 700mm and 300mm overhead cupboard, additional benchtop and tiled splashback to suit.