

Facades available:	
Coastal, Delta, Kingston, Nouveau	
Salisbury, Traditional, York	
Overall home width	12.83m
Overall home length	23.63m

Residence	213.2m ²	22.9sq
Garage	37.9m ²	4.1sq
Porch	3.4m ²	0.4sq
Alfresco	23.0m ²	2.5sq
Total	277.6m²	29.9sq

FLOORPLAN OPTIONS

We personalise our floorplans. Talk to us about our huge range of ready-to-go design options.

Listed details based on Traditional facade floorplan (illustrated)

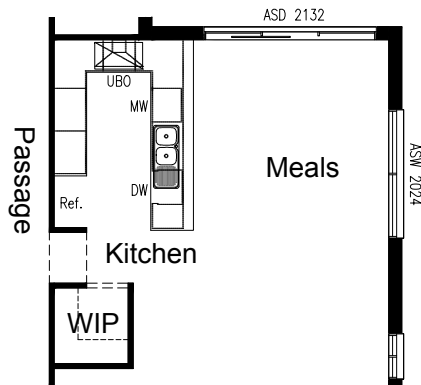
*Copyright conditions. All photos and illustrations are representative only. Floor plans and specifications may be varied by Burbank without notice, the dimensions are diagrammatic only and a Building Contract with final drawings will display correct dimensions and detail. All designs are the property of Burbank and must not be used, reproduced, copied or varied, wholly or in part without written permission from an authorised Burbank representative. Copyright Burbank Australia (QLD) Pty Ltd. ABN 77 103 014 615. QBCC 1046544.

Call 13 BURBANK
Visit burbank.com.au



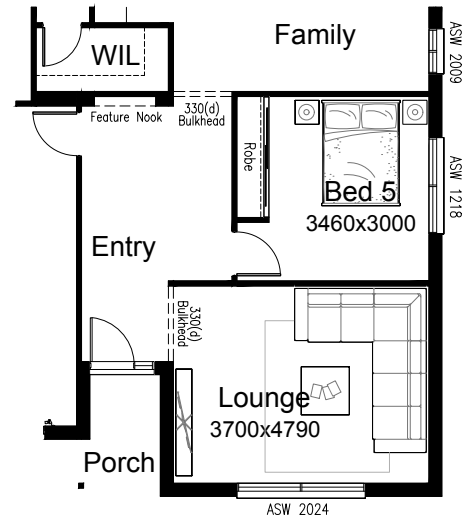
OPTION K1

Provide U-shaped Kitchen upgrade including 900mm canopy rangehood, 900mm electric cooktop, 600mm under bench oven, 450mm drawer unit, dishwasher provision, microwave provision with pot drawer, 900mm base cupboard, 2No. 900x900mm base corner cupboards, 2No. 800mm base cupboards, additional bench top and tiled splashback to suit. Replace ASDPB2136 with ASD2132 as shown.



OPTION IP2

Provide 5th Bedroom option to Kids Activity with additional stud and plaster wall, 820mm hinged door and built-in Robe with 450mm shelf and hanging rail. Replace ASW2018 window with ASW1218 as shown.



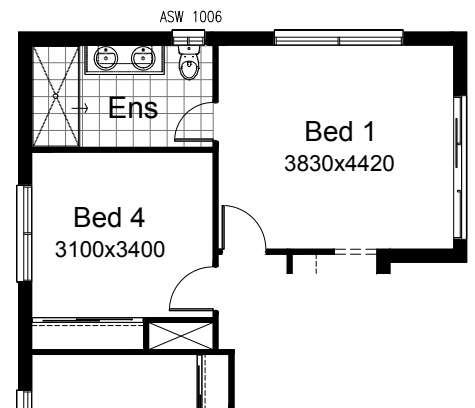
OPTION LD1

Provide Laundry upgrade including laminate base cupboards and stainless steel inset trough including 700mm base cupboard, 300mm base cupboard, 700mm overhead cupboard and 300mm overhead cupboard, additional benchtop and tiled splashback to suit.



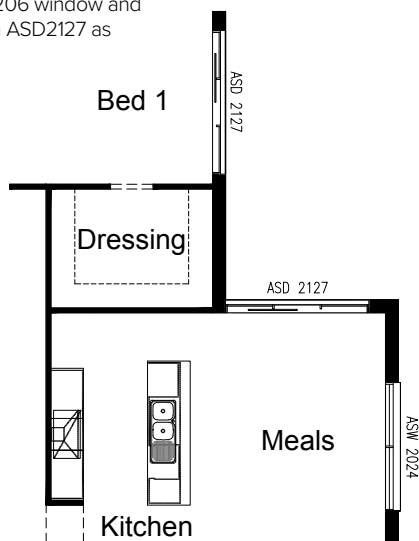
OPTION ENS1

Provide Ensuite upgrade including 1920x900mm tiled shower base, 1482mm vanity with double basins and relocated WC. Replace ASW1215 window with ASW1006 as shown. Option decreases Bed 1 width by 300mm to 4420mm and increases Bed 4 by 300mm to 3400mm.



OPTION IP1

Provide floor plan option increasing WIR to full-sized Dressing Room with 450mm shelf and hanging rail. Space taken from Alfresco. Remove ASW1206 window and replace ASDBP2136 with ASD2127 as shown.



OPTION EP1

Provide floor plan option with mirrored rear section of the house. Walk-in Linen is removed and I.T Hub reduces to 1820mm wide. Kids Activity reduces 180mm to 3280mm wide.

OPTION EP2

Provide floor plan option with mirrored rear section of the house. Walk-in Linen is removed and I.T Hub reduces to 1820mm wide. Replace standard Robe in Bed 2 with Walk-in Robe with 450mm shelf and hanging rail as shown. Kids Activity reduces 180mm to 3280mm wide.

