

FLOORPLAN OPTIONS

We personalise our floorplans. Talk to us about our huge range of ready-to-go design options.

Facades available:

Delta, Coastal, Kingston, Nouveau
Salisbury, Traditional, York

Overall home width 8.99m

Overall home length 22.91m

Residence	134.2m ²	14.5sq
Garage	37.3m ²	4.0sq
Porch	1.8m ²	0.2sq
Alfresco	10.1m ²	1.1sq
Total	183.4m²	19.7sq

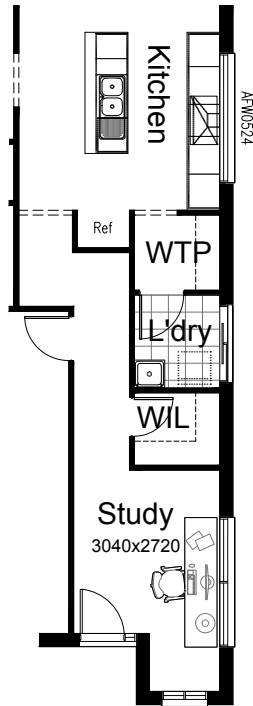
Listed details based on Traditional facade floorplan (illustrated)

*Copyright conditions. All photos and illustrations are representative only. Floor plans and specifications may be varied by Burbank without notice, the dimensions are diagrammatic only and a Building Contract with final drawings will display correct dimensions and detail. All designs are the property of Burbank and must not be used, reproduced, copied or varied, wholly or in part without written permission from an authorised Burbank representative. Copyright Burbank Australia (QLD) Pty Ltd. ABN 77 103 014 615. QBCC 1046544.

Call 13 BURBANK
Visit burbank.com.au

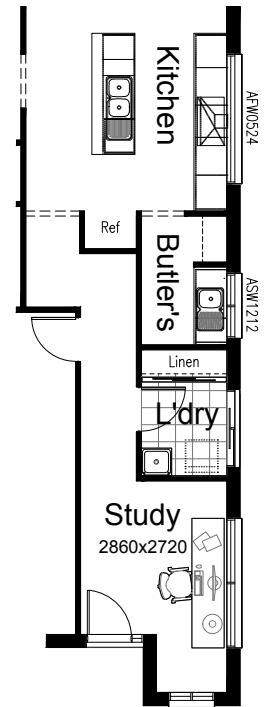
OPTION K1

Provide Walk-through Pantry option, including 900mm canopy rangehood, 900mm electric cooktop, 600mm under bench oven, 450mm drawer unit, dishwasher provision, microwave provision with pot drawer, 1No. 800mm base cupboard, 2No. 700mm base cupboards, 1No. 600mm base cupboard, 1No. 300mm base cupboard, 1No. 514x2410 fixed aluminium window, additional bench top and tiled splashback to suit. Option takes 440mm from Laundry and 1050mm from Study.



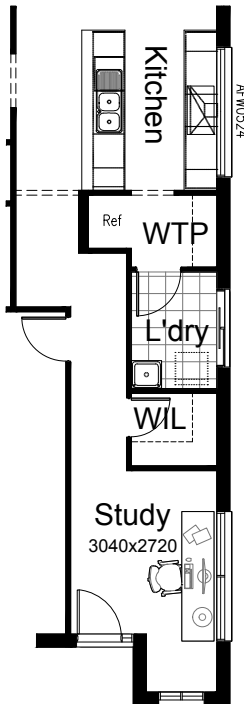
OPTION BP1

Provide Butler's Pantry Kitchen upgrade including 900mm canopy rangehood, 900mm electric cooktop, 600mm under bench oven, 450mm drawer unit, dishwasher provision with pot drawer, 1No. 900mm base cupboard, 1No. 800mm base cupboard, 2No. 700mm base cupboards, 1No. 600mm base cupboard, 1No. 450mm base cupboard, 1No. 300mm base cupboard, single bowl sink, 1No. 514x2410 fixed aluminium window, 1No. 1200x1210 fixed aluminium window, moves 820mm hinged door from Laundry to Entry Passage, additional bench top and tiled splashback to suit. Option removes Walk-in Linen and provides standard Linen cupboard within Laundry with sliding Robe doors. Option takes 1230mm from Study.



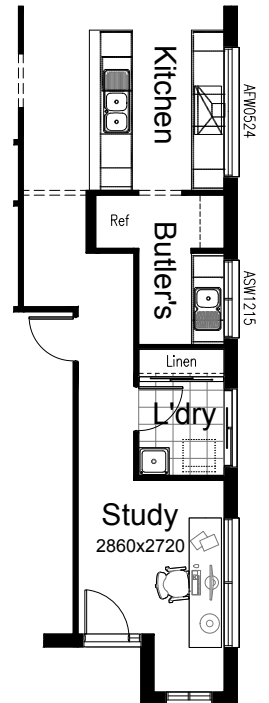
OPTION K2

Provide Galley-style Kitchen upgrade by rearranging refrigerator space, including 900mm canopy rangehood, 900mm electric cooktop, 600mm under bench oven, 450mm drawer unit, dishwasher provision, microwave provision with pot drawer, 3No. 800mm base cupboards, 3No. 350mm base cupboards, 1No. 514x2410 fixed aluminium window, additional bench top and tiled splashback to suit. Option takes 1050mm from Study and creates Walk-through Pantry in lieu of standard.



OPTION BP2

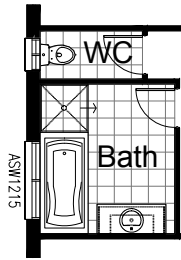
Provide Galley-style Butler's Pantry Kitchen upgrade by rearranging refrigerator space, including 900mm canopy rangehood, 900mm electric cooktop, 600mm under bench oven, 450mm drawer unit, dishwasher provision, microwave provision with pot drawer, 2No. 800mm base cupboards, 2No. 700mm base cupboards, 1No. 600mm base cupboard, 2No. 450mm base cupboards, 1No. 350mm base cupboards, single bowl sink, 1No. 514x2410 fixed aluminium window, 1No. 1200x1450mm fixed aluminium window, moves 820mm hinged door from Laundry to Entry Passage, additional bench top and tiled splashback to suit. Option removes Walk-in Linen and provides standard Linen cupboard within Laundry with sliding Robe doors. Option takes 1230mm from Study.





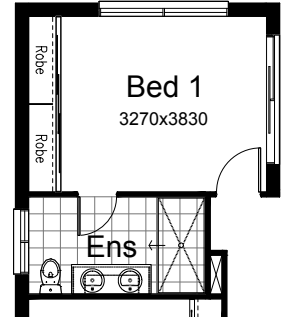
OPTION BA1

Provide Bathroom upgrade by rearranging the layout, deleting standard Linen cupboard to Passage, provide 1282mm vanity in lieu of standard 782mm vanity, provide 1200x1450mm sliding aluminium window in lieu of standard.



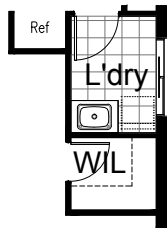
OPTION ENS1

Provide Ensuite upgrade including 900x1810mm tiled shower base, 1482mm vanity with double basins in lieu of standard.



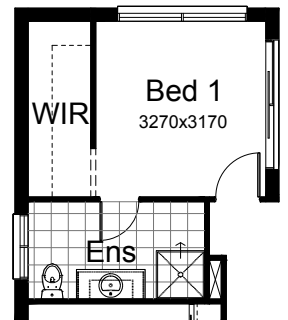
OPTION LD1

Provide Laundry upgrade option with laminate base cupboards and stainless steel inset trough including 1No. 800mm base cupboard, 1No. 800mm overhead cupboard, additional bench top and tiled splashback to suit.



OPTION IP1

Provide floor plan option including Walk-in Robe to Bed 1 in lieu of standard Robe with Vinyl sliding doors. Option takes 660mm of width from Bed 1.



OPTION LD2

Provide Laundry upgrade option with laminate base cupboards and stainless steel inset trough including 1No. 900mm base cupboard, 1No. 450mm base cupboard, 1No. 900mm overhead cupboard, 1No. 450mm overhead cupboard, additional bench top and tiled splashback to suit. Move 820mm hinged door from Passage to within Laundry. Option takes 1050mm from Study

