



Facades available:

Delta, Coastal, Kingston, Nouveau
Salisbury, Traditional, York

Overall home width 8.63m
Overall home length 17.99m

Residence	114.3m ²	12.3sq
Garage	23.7m ²	2.6sq
Porch	1.7m ²	0.2sq
Total	139.7m²	15.0sq

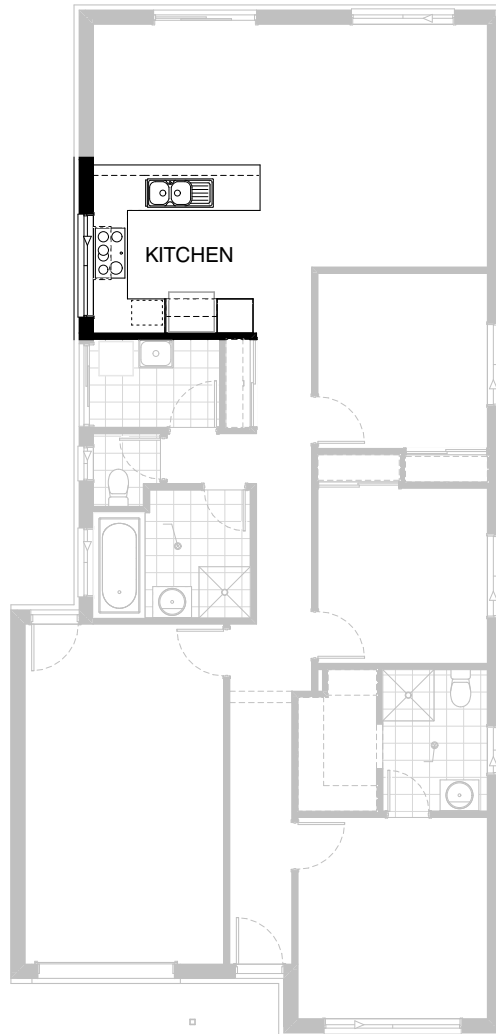
FLOORPLAN OPTIONS

We personalise our floorplans. Talk to us about our huge range of ready-to-go design options.

Listed details based on Traditional facade floorplan (illustrated)

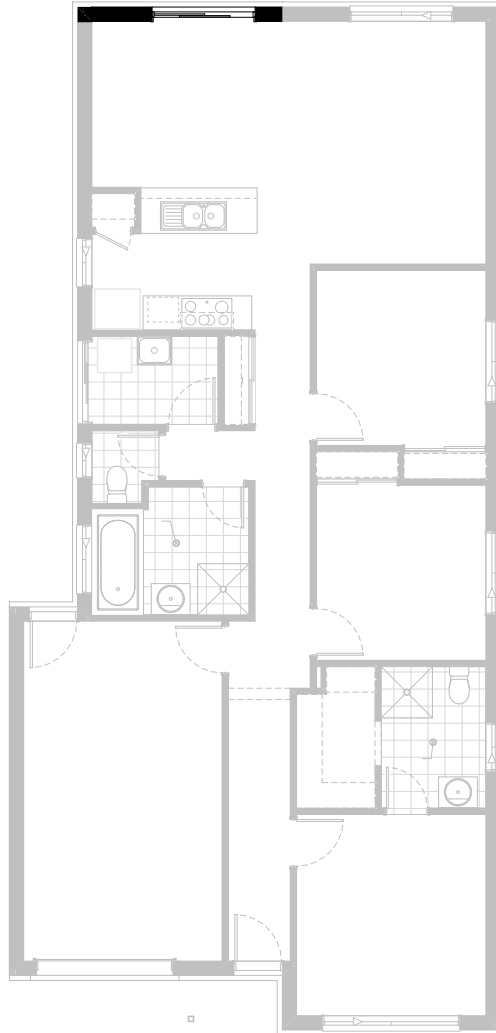
*Copyright conditions. All photos and illustrations are representative only. Floor plans and specifications may be varied by Burbank without notice, the dimensions are diagrammatic only and a Building Contract with final drawings will display correct dimensions and detail. All designs are the property of Burbank and must not be used, reproduced, copied or varied, wholly or in part without written permission from an authorised Burbank representative. Copyright Burbank Australia (QLD) Pty Ltd. ABN 77 103 014 615. QBCC 1046544.

Call 13 BURBANK
Visit burbank.com.au



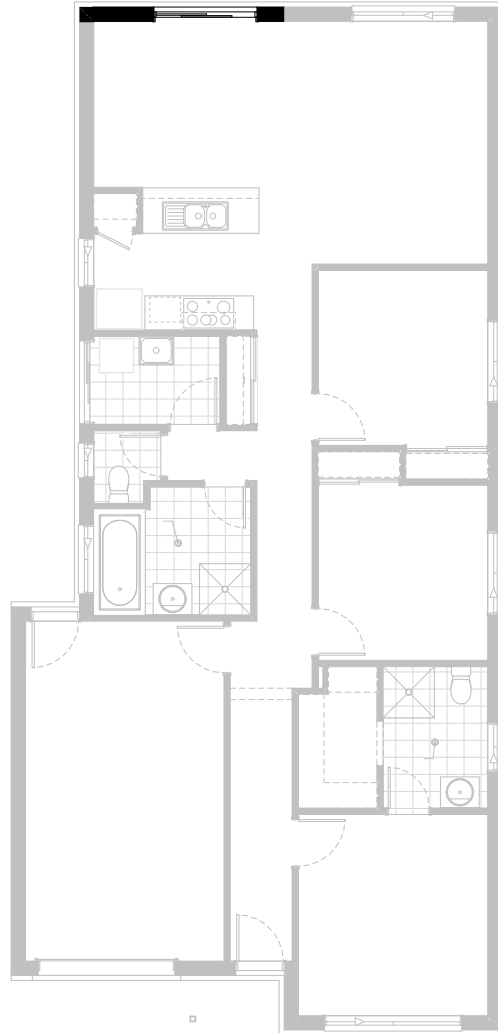
Option Kitchen01

Provide Kitchen upgrade including relocation of ref. space with laminated end panel & shelf space above, 600mm laminated pantry, additional floor cupboard space & 514x1810mm sliding window.



Option External01

Provide Alfresco option with tiled roof and 2No. 88mm x 88mm LOSP painted timber posts with galvanised stirrups and concrete pad footings.



Option External01

Provide Alfresco option with tiled roof and 2No. 88mm x 88mm LOSP painted timber posts with galvanised stirrups and concrete pad footings.