

**GUARANTEED RETURN
OF INVESTMENT***



\$950,000

THIS DISPLAY IS FOR SALE

image for illustrative purposes only

Home design:

Glenelg 390
Northampton façade

Address:

66 Nilpena Avenue
Morphettville
South Australia

Design features & options:

4 bedrooms
2.5 bathrooms
double garage
alfresco
multiple living spaces
butler's pantry

Upgrades include:

- Striking hamptons-style façade featuring a balcony
- Full height tiled ensuite with freestanding bath
- Multiple living spaces, including a theatre room & study
- Marble look stone benchtops
- Large butler's pantry with ample storage
- Timber decked alfresco

Home design:

Glenelg 390
Northampton façade

Address:

66 Nilpena Avenue
Morphettville
South Australia

Land:

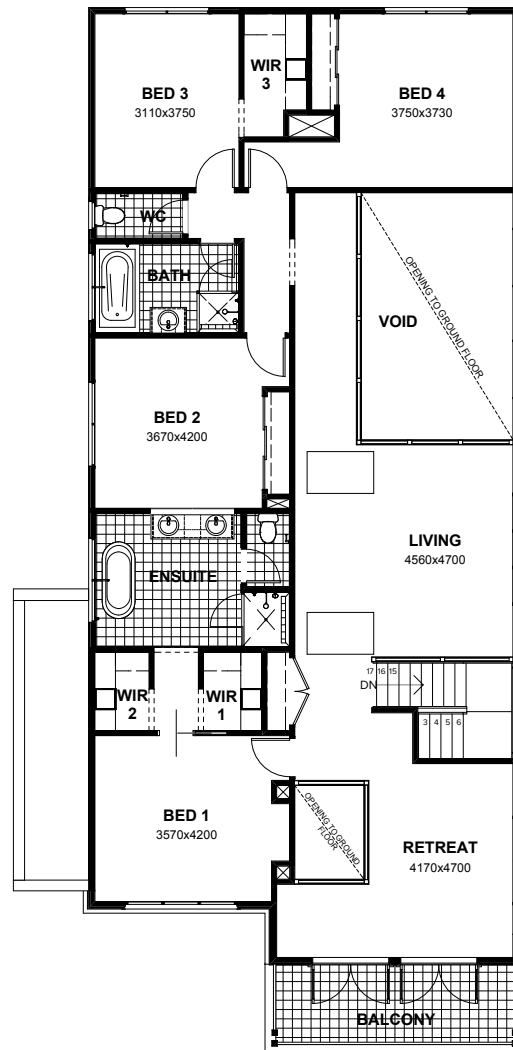
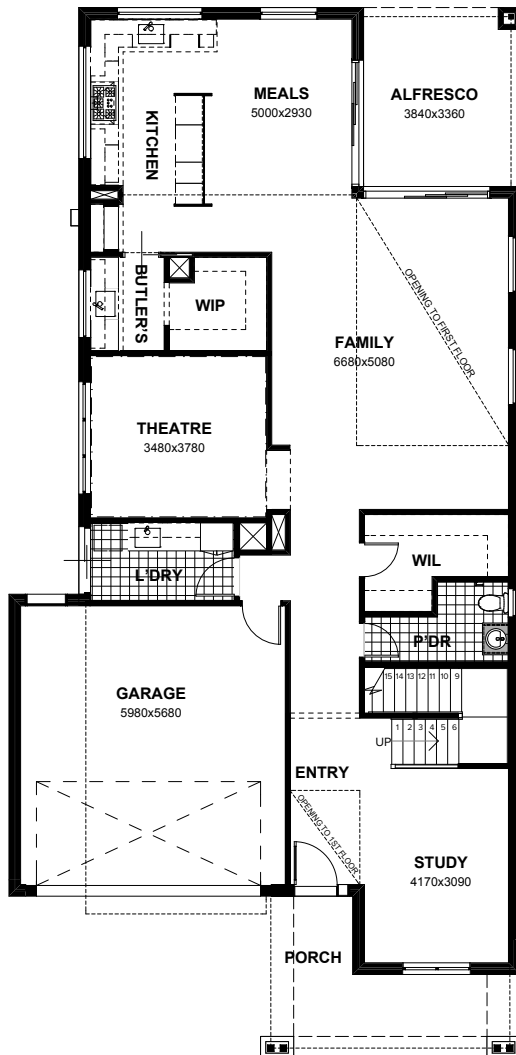
478sqm



All images contain internal or external luxury upgrade items and furniture not included in the home price.

Residence.....	331.1sqm	35.6sq
Alfresco	12.9sqm	1.4sq
Porch.....	13.4sqm	1.4sq

Garage.....	37.4sqm	4.0sq
Balcony.....	10.6sqm	1.1sq
Total	405.4sqm	43.6sq



*7% return on investment for the life of the lease. Subject to developer design approval. Conditions apply. All photos and illustrations are representative only. All designs are the property of Burbank and must not be used, reproduced, copied or varied, wholly or in part without written permission from an authorised Burbank representative. Burbank Australia (SA) Pty Ltd. ABN 96 165 533 406. BLD 266709.