

HENLEY

sheffield façade



lancaster façade



kent façade



wiltshire façade



harrogate façade



callington façade

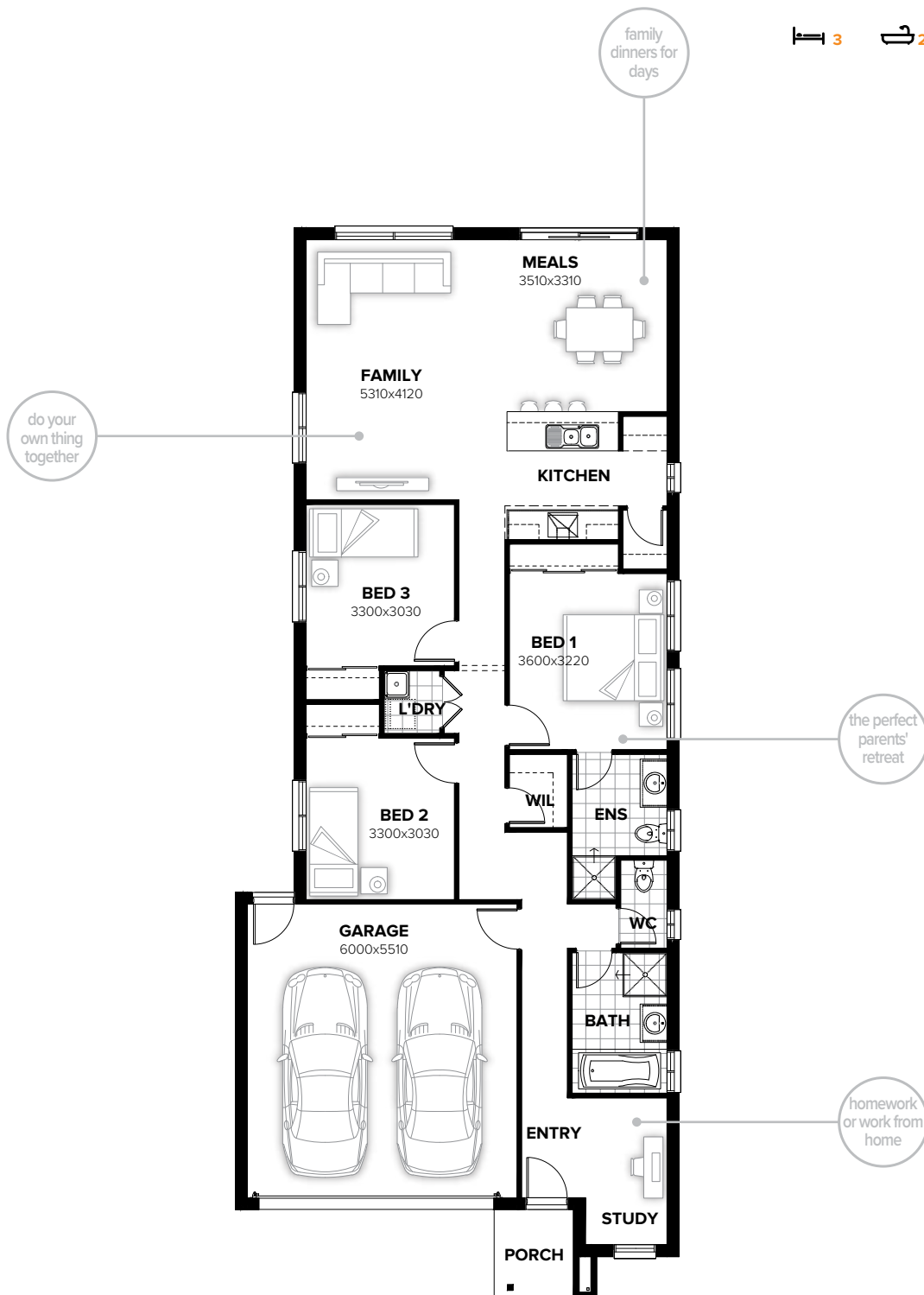


swansea façade



HENLEY 170

3 2 0 2



FLOORPLAN OPTIONS

Want to put a personal touch on your home? Speak to your New Home Consultant about the exciting range of ready-to-go design options for this floorplan.

Popular design options include:

- Kitchen options
- Gas fireplace to family room
- Ensuite upgrades
- Alfresco option
- Storage to garage option

min lot width	10.0m	residence	130.95sqm	14.10sq
min lot depth	32.0m	porch	3.09sqm	0.33sq
home width	9.05m	garage	36.11sqm	3.89sq
home length	21.83m	total	170.15sqm	18.32sq

Listed details based on Sheffield façade floorplan (illustrated)

Call 13 BURBANK Visit burbank.com.au

Burbank 
#noplacelikehome

*Copyright conditions. All photos and illustrations are representative only. Floor plans and specifications may be varied by Burbank without notice, the dimensions are diagrammatic only and a Building Contract with final drawings will display correct dimensions and detail. All designs are the property of Burbank and must not be used, reproduced, copied or varied, wholly or in part without written permission from an authorised Burbank representative. Copyright Burbank Australia (SA) Pty Ltd. ABN 96 165 533 406. BLD 266709.

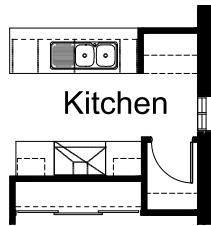
FLOORPLAN OPTIONS

HENLEY 170

3 2 0 2

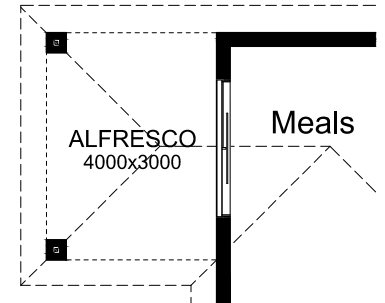
OPTION K1

Provide Kitchen Option with
 1no. 600mm base cupboard,
 1no. 632mm microwave base cupboard,
 1no. 900mm upright cooker with
 1no. 900mm canopy range hood,
 2no. 450mm overhead cupboards,
 1no. 450mm drawers,
 1no. laminated DW provision,
 1no. 800mm base cupboards,
 1no. 300mm base cupboard and
 1no. open shelf above refrigerator space.
 Provide tiled splash back and bench top to suit.



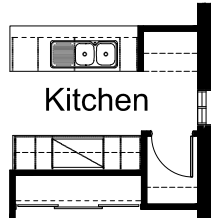
OPTION EP1

Provide Alfresco option with 2no. brick piers and earth floor to Alfresco.
 Increases area by 12.0m².
 Increases width by 3000mm.



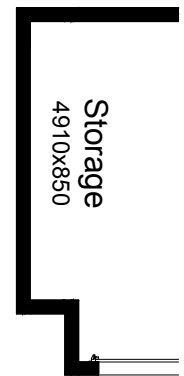
OPTION K2

Provide Kitchen upgrade with 900mm retractable range hood within overhead cabinet, 900mm cooktop and under bench oven, 2no. 300mm overhead cupboards, 2no. 350mm overhead cupboards, 2no. 300mm base cupboards and 2no. 350mm base cupboards.



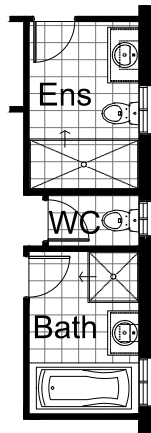
OPTION G1

Provide extension to Garage to create additional Storage area.
 Increases width by 850mm.
 Increase area by 4.58m².



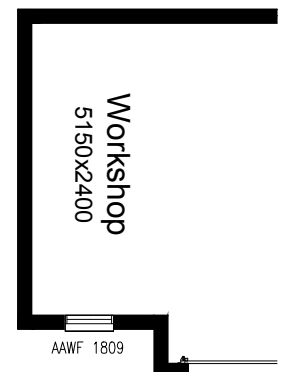
OPTION ENS1

Provide Ensuite upgrade with wall to wall tiled shower base in lieu of 900mm x 900mm polymarble shower base, delete plaster lined wall to Ensuite/WC and relocate WC toilet and WC/Bath flush panel hinged doors to suit.



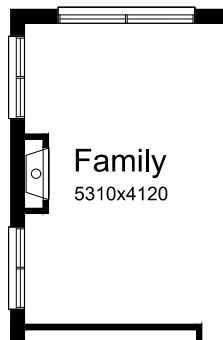
OPTION G2

Provide extension to Garage to create Workshop area including additional window to suit.
 Increases width by 2400mm.
 Increase area by 13.51m².



OPTION IP1

Provide Jetmaster SL-350 gas fireplace, 400mm off floor level in a 1400mm x 420mm boxed out plaster wall with a 4 sided black fascia to Family room side wall, relocate Family window by 2880mm and provide additional 1no. 2057mm x 1450mm aluminium sliding window to suit.



Call 13 BURBANK Visit burbank.com.au

Burbank 
 #noplacelikehome

*Copyright conditions. All photos and illustrations are representative only. Floor plans and specifications may be varied by Burbank without notice, the dimensions are diagrammatic only and a Building Contract with final drawings will display correct dimensions and detail. All designs are the property of Burbank and must not be used, reproduced, copied or varied, wholly or in part without written permission from an authorised Burbank representative. Copyright Burbank Australia (SA) Pty Ltd. ABN 96 165 533 406. BLD 266709.