

**GUARANTEED RETURN  
OF INVESTMENT\***



**\$495,700**

image for illustrative purposes only

**THIS DISPLAY IS FOR SALE**

**Home design:**

**Lockley 230**  
Callington façade

**Address:**

**10 Lillypilly Walk**  
**Brookmont Estate**  
**Andrews Farm**  
**South Australia**

**Design features & options:**

4 bedrooms  
2 bathrooms  
double garage  
alfresco  
multiple living spaces  
butler's pantry

**Upgrades include:**

- Modern façade featuring a raised portico
- Stylish marble look floors
- Full height tiled ensuite with wall to wall shower and tiled niche
- Rumpus rooms with fireplace
- 900mm Smeg appliances in kitchen
- Marble look stone benchtops
- Large butler's pantry with ample storage
- Timber decked alfresco
- Extra storage option in garage

**Home design:**

**Lockley 230**  
Callington façade

**Address:**

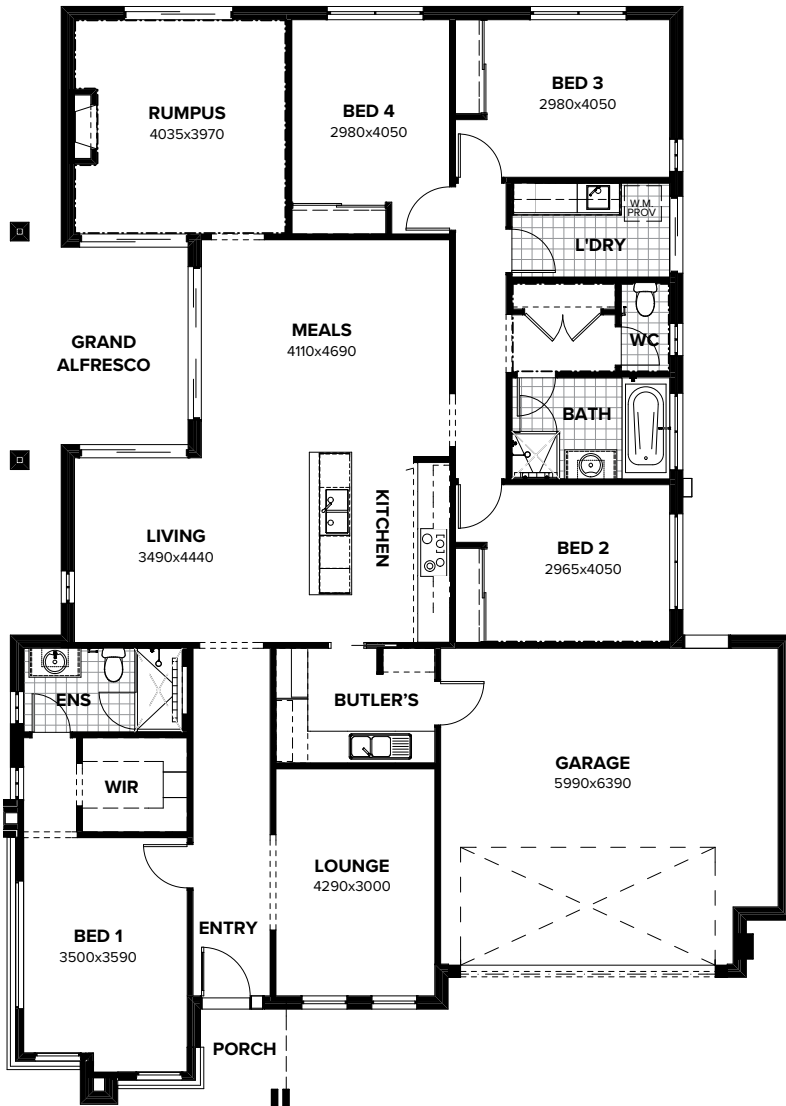
**10 Lillypilly Walk**  
**Brookmont Estate**  
**Andrews Farm**  
**South Australia**

**Land:**

**475.5sqm**



All images contain internal or external luxury upgrade items and furniture not included in the home price.



Residence.....	194.4sqm.....	20.9sq
Alfresco .....	13.4sqm.....	1.4sq
Porch .....	3.5sqm .....	0.4sq
Garage.....	40.9sqm .....	4.4sq
<b>Total.....</b>	<b>252.2sqm.....</b>	<b>27.1sq</b>



\*7% return on investment for the life of the lease. Subject to developer design approval. Conditions apply. All photos and illustrations are representative only. All designs are the property of Burbank and must not be used, reproduced, copied or varied, wholly or in part without written permission from an authorised Burbank representative. Burbank Australia (SA) Pty Ltd. ABN 96 165 533 406. BLD 266709.