

MITCHELL

sheffield façade



lancaster façade



kent façade



wiltshire façade



harrogate façade



callington façade

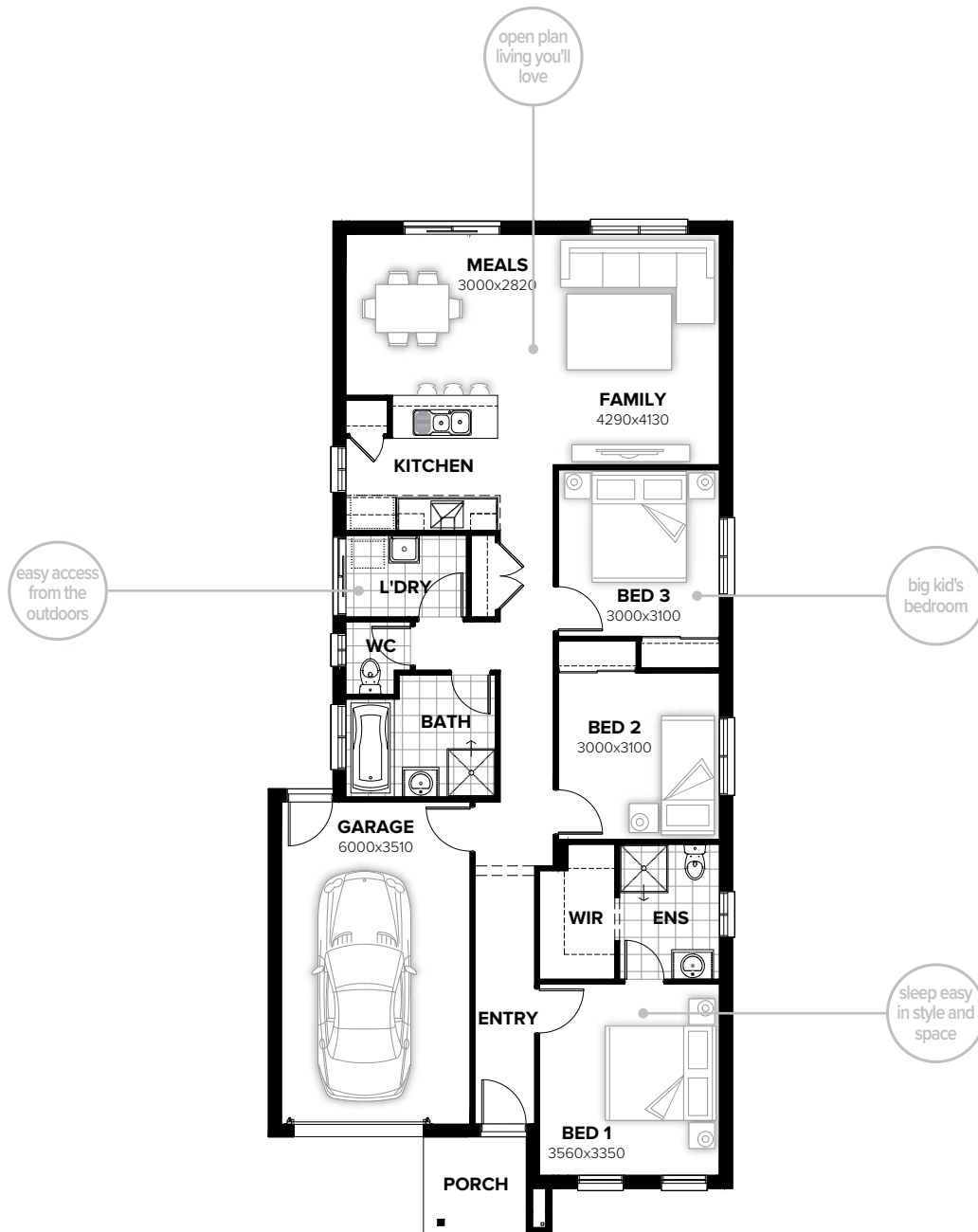


swansea façade



MITCHELL 145

3 2 0 1



FLOORPLAN OPTIONS

Want to put a personal touch on your home? Speak to your New Home Consultant about the exciting range of ready-to-go design options for this floorplan.

Popular design options include:

- Kitchen option
- Laundry upgrades
- Alfresco option
- Gas fireplace to family room
- Ensuite upgrades

min lot width	10.0m	residence	114.32sqm	12.31sq
min lot depth	29.0m	porch	3.63sqm	0.39sq
home width	8.63m	garage	23.65sqm	2.55sq
home length	18.83m	total	141.60sqm	15.24sq

Listed details based on Sheffield façade floorplan (illustrated)

Call 13 BURBANK Visit burbank.com.au

Burbank 
#noplacelikehome

*Copyright conditions. All photos and illustrations are representative only. Floor plans and specifications may be varied by Burbank without notice, the dimensions are diagrammatic only and a Building Contract with final drawings will display correct dimensions and detail. All designs are the property of Burbank and must not be used, reproduced, copied or varied, wholly or in part without written permission from an authorised Burbank representative. Copyright Burbank Australia (SA) Pty Ltd. ABN 96 165 533 406. BLD 266709.

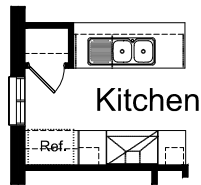
FLOORPLAN OPTIONS

MITCHELL 145

3 2 0 1

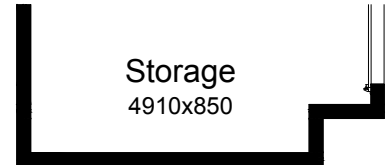
OPTION K1

Provide Kitchen Option with 2no. 450mm base cupboards, 2no. 300mm overhead cupboards, 1 no. 900 upright oven and 1 no. 900mm wide canopy range hood. M/W space removed due to space limitations. Semi-island benchtop and cabinetry unchanged.



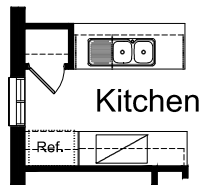
OPTION G1

Provide extension to Garage to create additional Storage area. Increases area by 4.58m². Increases width by 850mm.



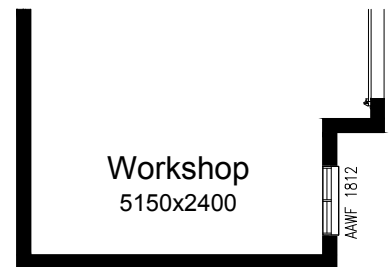
OPTION K2

Provide Kitchen Option with 900mm retractable rangehood within overhead cabinet, 900mm cooktop and under bench oven, 1no. 600mm overhead cupboard, 1no. 300mm overhead cupboard, 1no. 300mm base cupboard.



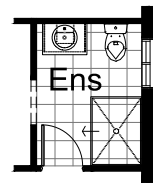
OPTION G2

Provide extension to Garage to create Workshop area including additional window to suit. Increases width by 2400mm. Increases area by 13.51m².



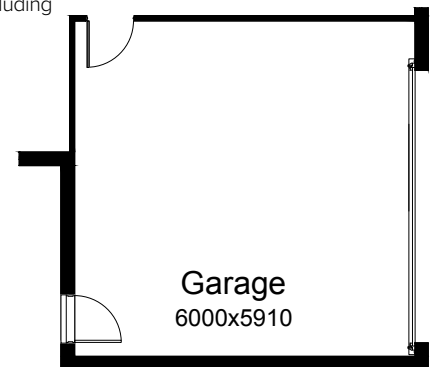
OPTION ENS1

Provide Ensuite upgrade including 1200mm x 900mm tiled shower base with relocation of vanity and window.



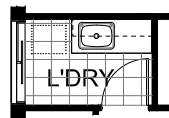
OPTION G3

Provide double car Garage including larger roller door to front. Increases area by 15.53m². Increases width by 2400mm.



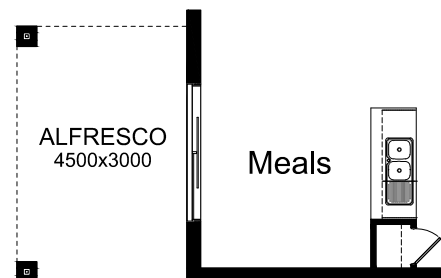
OPTION LD1

Provide Laundry upgrade with laminated insert trough, 1no. 900mm & 1no. 450mm base cupboard and 1no. 900mm & 1no. 450mm overhead cupboard with additional tiled splash back and bench top to suit.



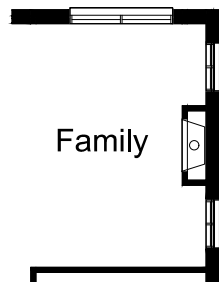
OPTION EP1

Provide Alfresco option with 2124 ASD and 2no. brick piers and earth floor to Alfresco. Increases area by 13.50m². Increases width by 3000mm.



OPTION IP1

Provide Jetmaster SL-350 gas fireplace, 400mm off floor level in a 1400mm x 420mm boxed out plaster wall with a 4 sided black fascia to Family room side wall. Provide 2no. 1809 ASW to Family side wall.



Call 13 BURBANK Visit burbank.com.au

Burbank 
#noplacelikehome

*Copyright conditions. All photos and illustrations are representative only. Floor plans and specifications may be varied by Burbank without notice, the dimensions are diagrammatic only and a Building Contract with final drawings will display correct dimensions and detail. All designs are the property of Burbank and must not be used, reproduced, copied or varied, wholly or in part without written permission from an authorised Burbank representative. Copyright Burbank Australia (SA) Pty Ltd. ABN 96 165 533 406. BLD 266709.