

# SOMERTON

sheffield façade



lancaster façade



kent façade



wiltshire façade



harrogate façade



callington façade



swansea façade



# SOMERTON 220

4 2 1 2



## FLOORPLAN OPTIONS

Want to put a personal touch on your home? Speak to your New Home Consultant about the exciting range of ready-to-go design options for this floorplan.

Popular design options include:

- Kitchen options
- Storage to garage option
- Laundry upgrades
- Gas fireplace to family room
- Option to switch master suite with living
- Kids' activity in lieu of bed 4

min lot width	12.5m
min lot depth	34.0m
home width	11.15m
home length	23.03m

residence	166.30sqm	17.90sq
alfresco	9.73sqm	1.05sq
porch	5.22sqm	0.56sq
garage	36.48sqm	3.93sq
<b>total</b>	<b>217.73sqm</b>	<b>23.44sq</b>

Listed details based on Sheffield façade floorplan (illustrated)

Call 13 BURBANK Visit [burbank.com.au](http://burbank.com.au)

**Burbank**   
#noplace like home

\*Copyright conditions. All photos and illustrations are representative only. Floor plans and specifications may be varied by Burbank without notice, the dimensions are diagrammatic only and a Building Contract with final drawings will display correct dimensions and detail. All designs are the property of Burbank and must not be used, reproduced, copied or varied, wholly or in part without written permission from an authorised Burbank representative. Copyright Burbank Australia (SA) Pty Ltd. ABN 96 165 533 406. BLD 266709.

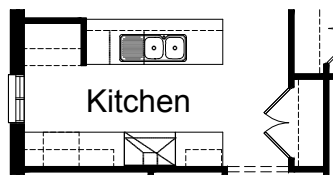
# FLOORPLAN OPTIONS

# SOMERTON 220

4 2 1 2

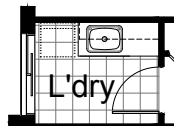
## OPTION K1

Provide Kitchen upgrade with 2no. 800mm base cupboards, 1no. laminated MW provision with pot drawer below, 1no. 300mm base cupboard, 1no. 900mm upright cooker with 900mm canopy range hood above, 3no. 600mm overhead cupboards, 1no. 300mm laminated overhead open shelves, 1no. Overhead Cupboard above refrigerator space, 1no. 350mm base cupboard, 1no. laminated DW provision, 1no. 900mm base cupboard and 1no. 450mm drawers with additional bench top and tiled splash back to suit.



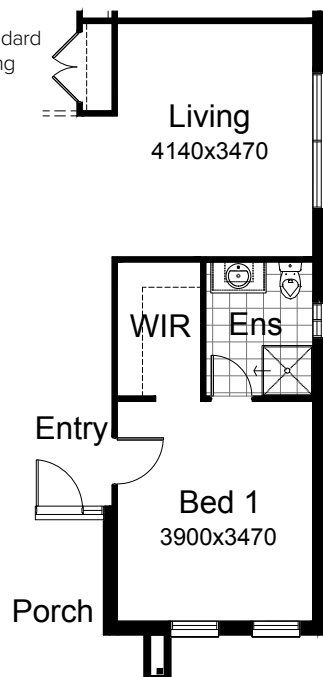
## OPTION LD1

Provide Laundry upgrade with laminated insert trough, 1no. 900mm base cupboard, 1no. 450mm base cupboard, 1no. 900mm overhead cupboard, 1no. 450mm overhead cupboard and additional tiled splash back and bench top to suit.



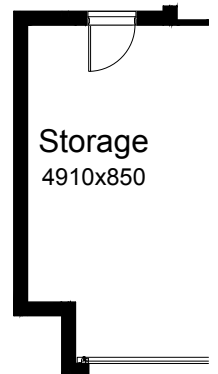
## OPTION IP1

Relocate Living with Bed 1, Ensuite and WIR and provide 1no. 1800mm x 2410mm aluminium sliding window in lieu of standard 1no. 1800mm x 1810mm aluminium sliding window.



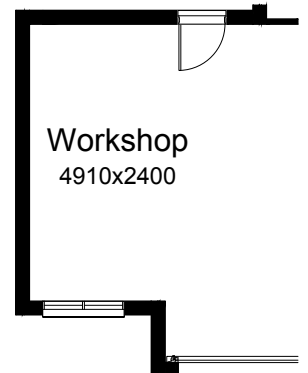
## OPTION G1

Provide extension to Garage to create additional Storage area. Increases area by 4.58m<sup>2</sup>. Increases width by 850mm.



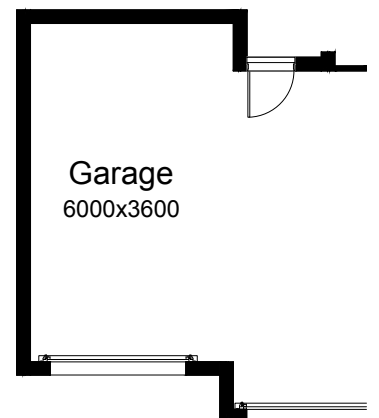
## OPTION G2

Provide extension to Garage to create Workshop area including additional window to suit. Increases width by 2400mm. Increases area by 12.93m<sup>2</sup>.



## OPTION G3

Provide triple car Garage including additional Garage door as per colour selection. Increases area by 23.69m<sup>2</sup>. Increases width by 3600mm.



Call 13 BURBANK Visit [burbank.com.au](http://burbank.com.au)

**Burbank**   
#noplacelikehome

\*Copyright conditions. All photos and illustrations are representative only. Floor plans and specifications may be varied by Burbank without notice, the dimensions are diagrammatic only and a Building Contract with final drawings will display correct dimensions and detail. All designs are the property of Burbank and must not be used, reproduced, copied or varied, wholly or in part without written permission from an authorised Burbank representative. Copyright Burbank Australia (SA) Pty Ltd. ABN 96 165 533 406. BLD 266709.

# FLOORPLAN OPTIONS

# SOMERTON 220

4 2 1 2

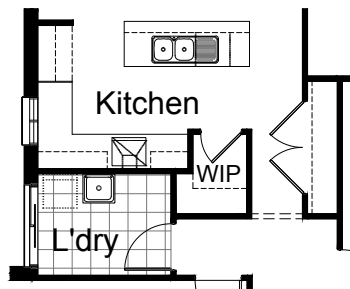
## OPTION K2

Provide Kitchen and WIP Option

WIP:- increase Laundry width by 160mm, delete Linen cupboard, 2no. 520mm flush panel hinged doors and 3no. shelves, reduce L'dry passage by 200mm and provide site build plaster lined WIP with 4no. 300mm deep shelves, 4no. 450mm deep shelves and 1no. 720mm flush panel hinged door. Decrease Kitchen opening/Bulkhead width by 190mm to 900mm in lieu of standard 1090mm.

ISLAND:- Provide 1no. 400mm base cupboards, 1no. 800mm base cupboard, 1no. laminated DW provision, 1no. 300mm base cupboard,

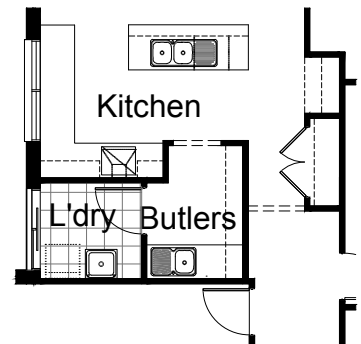
KITCHEN:- 1no. 900mm Overhead cupboard above refrigerator space, 1no. 450mm drawers, 1no. 450mm base cupboard, 1no. 800mm blind carcass with 1no. 350mm door, 1no. 350mm base cupboard, 1no. 700mm base cupboard, 1no. 600mm under bench oven with 1no. 600mm wide canopy range hood, 1no. 450mm overhead cupboard, 1no. 600mm overhead cupboard, 1no. 700mm overhead cupboard, 1no. 1200mm x 850mm aluminium sliding window with additional tiled splash back and bench top to suit. Convert Broom cupboard into Linen cupboard, increase width by 200mm in line with WIP wall.



## OPTION K3

Provide option upgrade with 'L' shaped Kitchen, Butlers Pantry and walk through Laundry. Provide 1no. Overhead Cupboard above refrigerator space, 2no.

300mm base cupboards, 1no. 800mm base cupboards, 1no. DW provision, 1no. 1050mm blind carcass with 2no. 300mm doors, 1no. 600mm base cupboard, 1no. 400mm base cupboard, 1no. 450mm drawers, 2no. 450mm base cupboards, 1no. 400mm overhead cupboard, 1no. 900mm overhead cupboard, 1no. 600mm under bench oven with 1no. 600 canopy range hood, 1no. 1200mm x 1800mm aluminium sliding window in lieu of standard 1no. 1800mm x 850mm sliding window, additional tiles splash back and bench top to Kitchen. Provide additional 1no. 400mm base cupboard, 1no. 900mm base cupboard, 1800mm high open adjustable shelves, 1no. single bowl sink with drainer and tiled splash back and bench top to suit to Butlers.



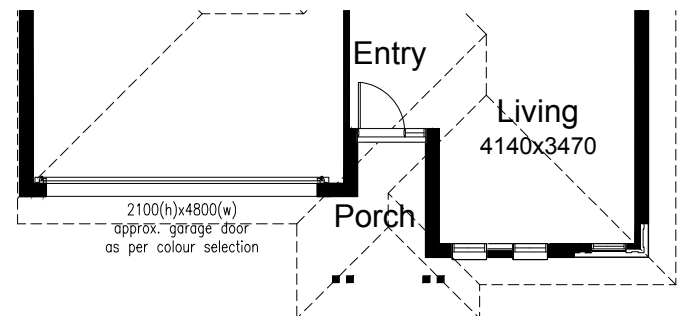
## OPTION EP2

Provide Modified Porch to Kent

Facade by increasing Porch depth by 600mm and providing additional

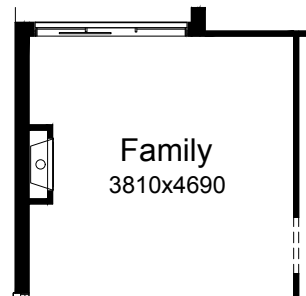
2no. painted timber posts to suit.

Note: Increases Porch area to 4.61m<sup>2</sup> in lieu of standard 3.25m<sup>2</sup>.



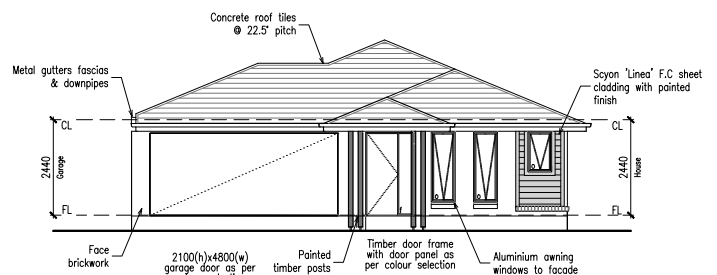
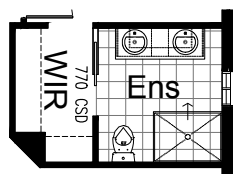
## OPTION IP2

Provide Jetmaster SL-350 gas fireplace, 400mm off floor level in a 1400mm x 420mm boxed out plaster wall with a 4 sided black fascia to Family room side wall and delete 1no. 514mm x 2410mm aluminium sliding window to Family.



## OPTION ENS1

Provide Ensuite Option with 1no. 1200mm x 900mm Tiled shower base in lieu of standard, 1no. 1582mm wide vanity unit with 2no. basins in lieu of standard and increase Ensuite width by 300mm and decrease Entry width by 200mm. Provide 770mm cavity sliding door off WIR in lieu of 720mm hinged door.



Kent facade

Call 13 BURBANK Visit [burbank.com.au](http://burbank.com.au)

**Burbank**   
#noplacelikehome

\*Copyright conditions. All photos and illustrations are representative only. Floor plans and specifications may be varied by Burbank without notice, the dimensions are diagrammatic only and a Building Contract with final drawings will display correct dimensions and detail. All designs are the property of Burbank and must not be used, reproduced, copied or varied, wholly or in part without written permission from an authorised Burbank representative. Copyright Burbank Australia (SA) Pty Ltd. ABN 96 165 533 406. BLD 266709.

# FLOORPLAN OPTIONS

## SOMERTON 220

4 2 1 2

### OPTION IP3

Mirror rear section of Home increase length of Linen cupboard with 2No. 820mm hinged doors in lieu of 2No. 520mm doors. Provide WIP in lieu of Pantry cupboard and WIR 2 to Bed 2 in lieu of Robe. Relocate Bed 3 Robe adjacent to WC and relocate window to suit. Decrease Family size to 3130mm x 4690mm, Meals size to 3000mm x 4690mm, Bed 1 size to 3600mm x 3470mm and Living size to 3600mm x 3470mm.



Call 13 BURBANK Visit [burbank.com.au](http://burbank.com.au)

**Burbank**   
#noplacelikehome

\*Copyright conditions. All photos and illustrations are representative only. Floor plans and specifications may be varied by Burbank without notice, the dimensions are diagrammatic only and a Building Contract with final drawings will display correct dimensions and detail. All designs are the property of Burbank and must not be used, reproduced, copied or varied, wholly or in part without written permission from an authorised Burbank representative. Copyright Burbank Australia (SA) Pty Ltd. ABN 96 165 533 406. BLD 266709.