

SOMERTON

sheffield façade



lancaster façade



kent façade



wiltshire façade



harrogate façade



callington façade

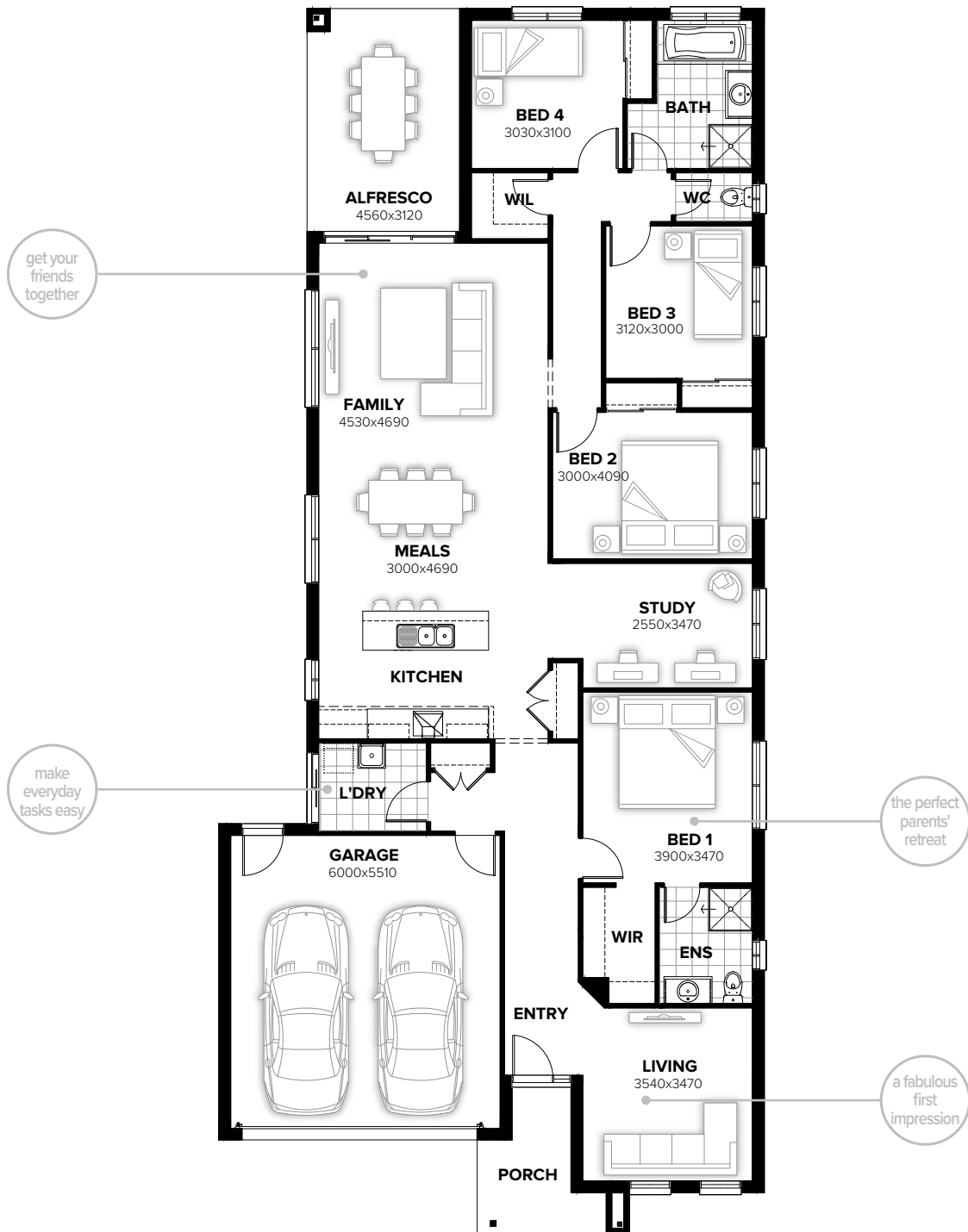


swansea façade



SOMERTON 235

4 2 1 2



FLOORPLAN OPTIONS

Want to put a personal touch on your home? Speak to your New Home Consultant about the exciting range of ready-to-go design options for this floorplan.

Popular design options include:

- Kitchen options
- Storage to garage option
- Laundry upgrades
- Gas fireplace to family room
- Option to switch master suite with living
- Kids' activity in lieu of bed 4

min lot width	12.5m
min lot depth	35.0m
home width	11.15m
home length	25.07m

residence	180.89sqm	19.47sq
alfresco	14.23sqm	1.53sq
porch	5.22sqm	0.56sq
garage	36.48sqm	3.93sq
total	236.82sqm	25.49sq

Listed details based on Sheffield façade floorplan (illustrated)

Call 13 BURBANK Visit burbank.com.au

Burbank 
#noplacelikehome

*Copyright conditions. All photos and illustrations are representative only. Floor plans and specifications may be varied by Burbank without notice, the dimensions are diagrammatic only and a Building Contract with final drawings will display correct dimensions and detail. All designs are the property of Burbank and must not be used, reproduced, copied or varied, wholly or in part without written permission from an authorised Burbank representative. Copyright Burbank Australia (SA) Pty Ltd. ABN 96 165 533 406. BLD 266709.

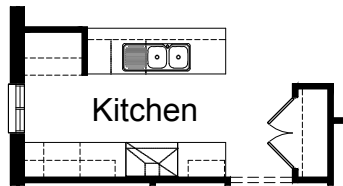
FLOORPLAN OPTIONS

SOMERTON 235

 4
  2
  1
  2

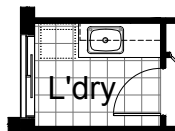
OPTION K1

Provide Kitchen upgrade with 2no. 800mm base cupboards, 1no. laminated MW provision with pot drawer below, 1no. 300mm base cupboard, 1no. 900mm upright cooker with 900mm canopy range hood above, 3no. 600mm overhead cupboards, 1no. 300mm laminated overhead open shelves, 1no. 900mm Overhead cupboard above refrigerator space, 1no. 350mm base cupboard, 1no. laminated DW provision, 1no. 900mm base cupboard and 1no. 450mm drawers with additional bench top and tiled splash back to suit.



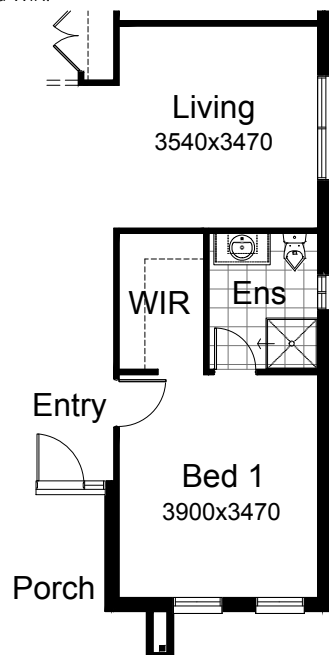
OPTION LD1

Provide Laundry upgrade with laminated insert trough, 1no. 900mm base cupboard, 1no. 450mm base cupboard, 1no. 900mm overhead cupboard, 1no. 450mm overhead cupboard and additional tiled splash back and bench top to suit.



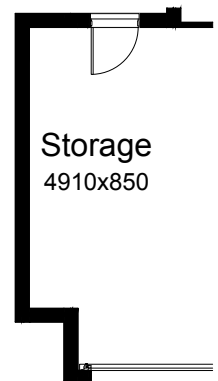
OPTION IP1

Relocate Living with Bed 1, Ensuite and WIR.



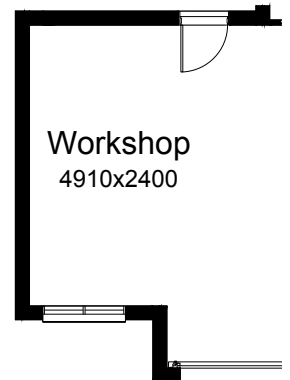
OPTION G1

Provide extension to Garage to create additional Storage area. Increases area by 4.58m². Increases width by 850mm.



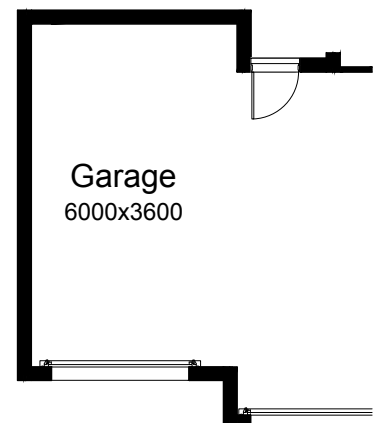
OPTION G2

Provide extension to Garage to create Workshop area including additional window to suit. Increases width by 2400mm. Increases area by 12.93m².



OPTION G3

Provide triple car Garage including additional Garage door as per colour selection. Increases area by 23.69m². Increases width by 3600mm.



Call 13 BURBANK Visit burbank.com.au

Burbank 
#noplacelikehome

*Copyright conditions. All photos and illustrations are representative only. Floor plans and specifications may be varied by Burbank without notice, the dimensions are diagrammatic only and a Building Contract with final drawings will display correct dimensions and detail. All designs are the property of Burbank and must not be used, reproduced, copied or varied, wholly or in part without written permission from an authorised Burbank representative. Copyright Burbank Australia (SA) Pty Ltd. ABN 96 165 533 406. BLD 266709.

FLOORPLAN OPTIONS

SOMERTON 235



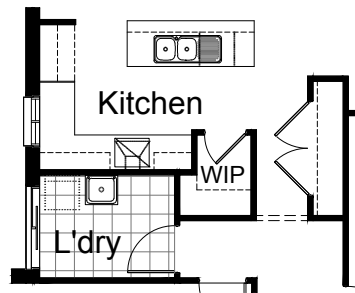
OPTION K2

Provide Kitchen and WIP Option

WIP:- increase Laundry width by 160mm, delete Linen cupboard, 2no. 520mm flush panel hinged doors and 3no. shelves, reduce L'dry passage by 200mm and provide site build plaster lined WIP with 4no. 300mm deep shelves, 4no. 450mm deep shelves and 1no. 720mm flush panel hinged door. Decrease Kitchen opening/Bulkhead width by 190mm to 900mm in lieu of standard 1090mm.

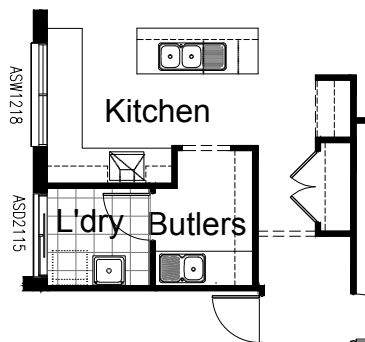
ISLAND:- Provide 1no. 400mm base cupboards, 1no. 800mm base cupboard, 1no. laminated DW provision, 1no. 300mm base cupboard,

KITCHEN:- 1no. 900mm Overhead cupboard above refrigerator space, 1no. 450mm drawers, 1no. 450mm base cupboard. 1no. 800mm blind carcass with 1no. 350mm door, 1no. 350mm base cupboard, 1no. 700mm base cupboard. 1no. 600mm under bench oven with 1no. 600mm wide canopy range hood, 1no. 450mm overhead cupboard, 1no. 600mm overhead cupboard, 1no. 700mm overhead cupboard. 1no. 1200mm x 850mm aluminium sliding window with additional tiled splash back and bench top to suit. Rename Pantry cupboard into Linen cupboard, increase width by 800mm in line with WIP wall, provide 4no. 450mm shelves and provide 2no. 820mm hinged door ILO standard



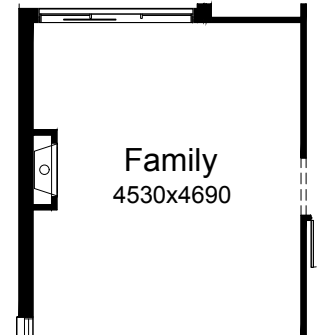
OPTION K3

Provide option upgrade with 'L' shaped Kitchen, Butlers Pantry and walk through Laundry. Provide 1no. 900mm Overhead cupboard above refrigerator space, 2no. 300mm base cupboards, 1no. 800mm base cupboards, 1no. DW provision, 1no. 1050mm blind carcass with 2no. 300mm doors, 1no. 600mm base cupboard, 1no. 400mm base cupboard, 1no. 450mm drawers, 2no. 450mm base cupboards, 1no. 400mm overhead cupboard, 1no. 900mm overhead cupboard, 1no. 600mm under bench oven with 1no. 600 canopy range hood, 1no. 1200mm x 1800mm aluminium sliding window in lieu of standard 1no. 1800mm x 850mm sliding window, additional tiles splash back and bench top to Kitchen. Provide additional 1no. 400mm base cupboard, 1no. 900mm base cupboard, 1800mm high open adjustable shelves, 1no. single bowl sink with drainer and tiled splash back and bench top to suit.



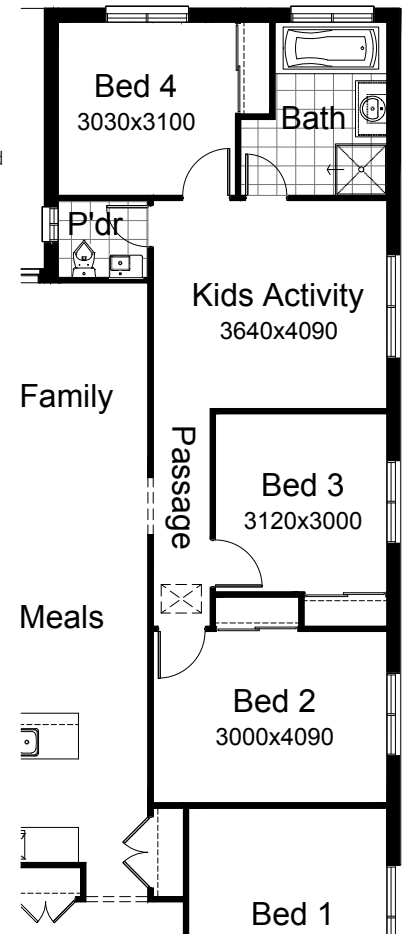
OPTION IP3

Provide Jetmaster SL-350 gas fireplace, 400mm off floor level in a 1400mm x 420mm boxed out plaster wall with a 4 sided black fascia to Family room side wall and delete 1no. 514mm x 2410mm aluminium sliding window to Family.



OPTION IP2

Provide Kids Activity with additional 1no. 1200mm x 1810mm aluminium sliding window in lieu of Study and relocate Pantry, Bed 2, Bed 3 and Passage opening to suit. Delete WIL and provide additional Powder room in lieu of standard WC including an additional wall hung basin.



Call 13 BURBANK Visit burbank.com.au

Burbank 
#noplacelikehome

*Copyright conditions. All photos and illustrations are representative only. Floor plans and specifications may be varied by Burbank without notice, the dimensions are diagrammatic only and a Building Contract with final drawings will display correct dimensions and detail. All designs are the property of Burbank and must not be used, reproduced, copied or varied, wholly or in part without written permission from an authorised Burbank representative. Copyright Burbank Australia (SA) Pty Ltd. ABN 96 165 533 406. BLD 266709.

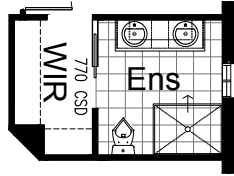
FLOORPLAN OPTIONS

SOMERTON 235



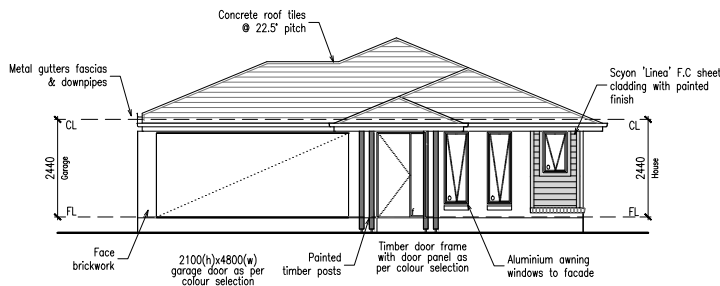
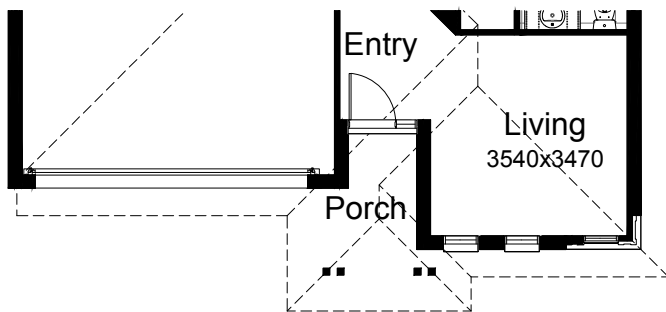
OPTION ENS1

Provide Ensuite Option with 1no. 1200mm x 900mm Tiled shower base in lieu of standard, 1no. 1582mm wide vanity unit with 2no. basins in lieu of standard and increase Ensuite width by 300mm and decrease WIR width by 100mm and decrease Entry width by 200mm. Provide 770mm cavity sliding door off WIR in lieu of 720mm hinged door.



OPTION EP1

Provide Modified Porch to Kent Facade by increasing Porch depth by 600mm and providing additional 2no. painted timber posts to suit. Note: Increases Porch area to 4.61m² in lieu of standard 3.25m².

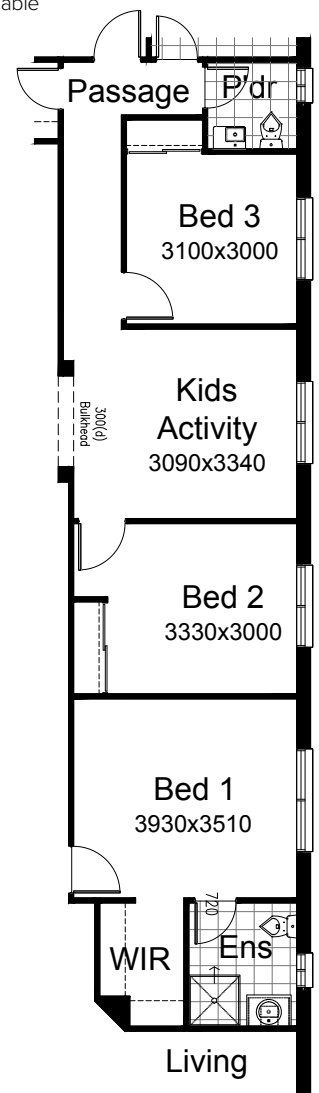


Kent facade

OPTION IP4

Provide Kids Activity lieu of Study and Powder in lieu of WC including relocate Bed 2, reconfigure Bed 1 and Ensuite, Provide 1800mm x 610mm aluminium sliding window to Powder in lieu of 1027mm x 160mm window to WC, Provide 270mm columns with 1600mm opening to passage entry with 300mm bulkhead over, 1No. 520mm double flush panel door unit to Bed 3 in lieu of 620mm and 1No. 720mm double flush panel door unit to Bed 2 in lieu of 620mm,

NOTE: This Option removes Pantry to Kitchen and should be used in conjunction with either K4 or K5 options. Compliant with K2 without separate Pantry.



Call 13 BURBANK Visit burbank.com.au

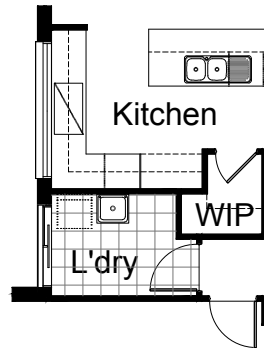
Burbank 
#noplacelikehome

*Copyright conditions. All photos and illustrations are representative only. Floor plans and specifications may be varied by Burbank without notice, the dimensions are diagrammatic only and a Building Contract with final drawings will display correct dimensions and detail. All designs are the property of Burbank and must not be used, reproduced, copied or varied, wholly or in part without written permission from an authorised Burbank representative. Copyright Burbank Australia (SA) Pty Ltd. ABN 96 165 533 406. BLD 266709.

OPTION K4

Provide Kitchen Upgrade including removal of Linen to create WIP, 1000mm deep Kitchen island bench. Provide 900mm cooktop and underbench oven, 900mm retractable rangehood, 2No. 900mm base cabinets, 1No. 900mm corner base cabinet, 1No. 450mm drawer unit, 1No. dishwasher provision, 1No. microwave provision, 3No. 900mm overhead cabinets, 1No. 600mm corner overhead cabinet, 1No. 350mm overhead cabinet, 1no. 900mm Overhead cupboard above fridge space including additional benchtop and tiled splashback to suit and provide 514mm x 2410mm fixed NBR aluminium window to Kitchen splashback.

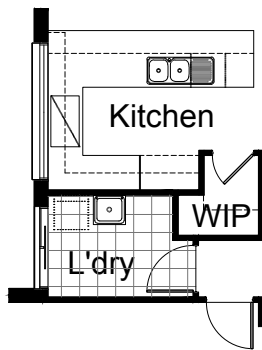
Note: Recommended in conjunction with IP3



OPTION K5

Provide Kitchen Upgrade including removal of Linen to create WIP, 900mm deep Kitchen island bench. Provide 900mm cooktop and underbench oven, 900mm retractable rangehood, 1No. 700mm base cabinets, 2No. 800mm Blind base cabinets, 2No. 150mm base cabinets, 1No. 900mm base cabinet, 1No. 450mm drawer unit, 1No. dishwasher provision, 1No. microwave provision, 2No. 700mm overhead cabinet, 1No. 900mm Blind overhead cabinet, 2No. 400mm overhead cabinet, 1no. 900mm Overhead Cupboard above fridge space including additional benchtop and tiled splashback to suit. provide 514mm x 2410mm fixed NBR aluminium window to Kitchen splashback.

Note: Recommended in conjunction with IP3



OPTION IP5

Mirror rear section of Home and increase length of Linen cupboard with 2No. 820mm hinged doors in lieu of 2No. 520mm doors. Increase Study size to 3590mm x 3470mm and provide ASW1818 aluminium sliding window in lieu of ASW1215. Decrease Family size to 3790mm x 4690mm and Bed 1 size to 3600mm x 3470mm.

Floor Plan - Option IP5

