

SOMERTON

sheffield façade



lancaster façade



kent façade



wiltshire façade



harrogate façade



callington façade

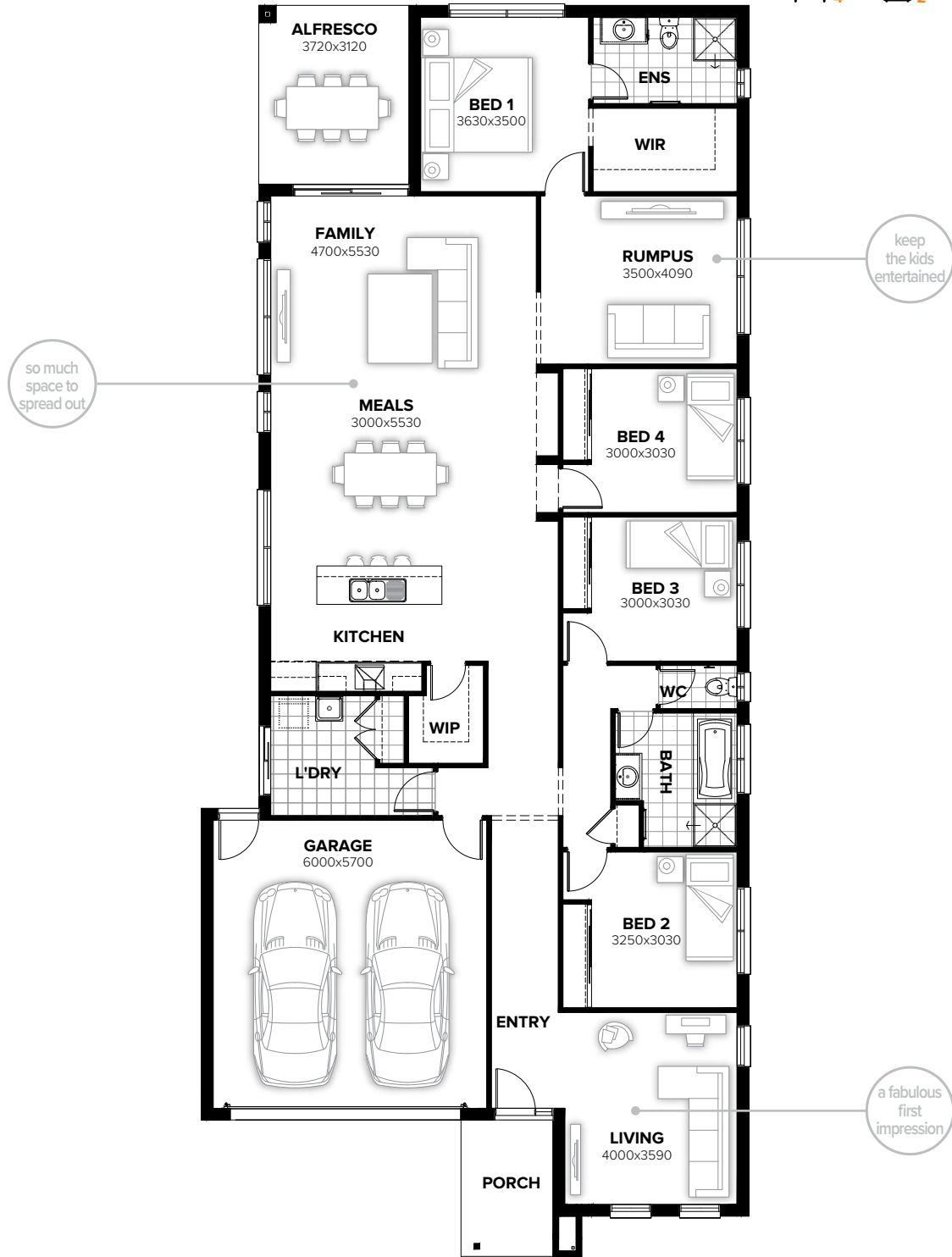


swansea façade



SOMERTON 255

4 2 1 2



FLOORPLAN OPTIONS

Want to put a personal touch on your home? Speak to your New Home Consultant about the exciting range of ready-to-go design options for this floorplan.

Popular design options include:

- Kitchen options
- Storage to garage option
- Laundry upgrades
- Gas fireplace to family room
- Raked ceiling to kitchen, meals & family
- Bed 5 in lieu of rumpus room

min lot width	12.5m
min lot depth	36.0m
home width	11.39m
home length	26.03m

residence	203.26sqm	21.88sq
alfresco	11.61sqm	1.25sq
porch	5.61sqm	0.60sq
garage	37.35sqm	4.02sq
total	257.83sqm	27.75sq

Listed details based on Sheffield façade floorplan (illustrated)

Call 13 BURBANK Visit burbank.com.au

Burbank 
#noplacelikehome

*Copyright conditions. All photos and illustrations are representative only. Floor plans and specifications may be varied by Burbank without notice, the dimensions are diagrammatic only and a Building Contract with final drawings will display correct dimensions and detail. All designs are the property of Burbank and must not be used, reproduced, copied or varied, wholly or in part without written permission from an authorised Burbank representative. Copyright Burbank Australia (SA) Pty Ltd. ABN 96 165 533 406. BLD 266709.

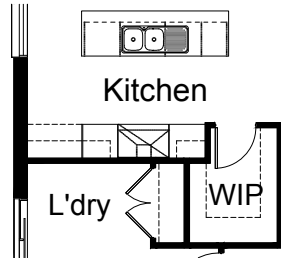
FLOORPLAN OPTIONS

SOMERTON 255



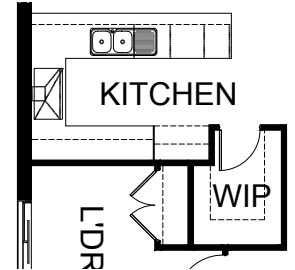
OPTION K1

Provide Kitchen upgrade with 2no. 600mm base cupboards, 1no. 900mm upright oven with 900mm canopy range hood above, 2no. 450mm overhead cupboards. Island bench top and WIP unchanged.



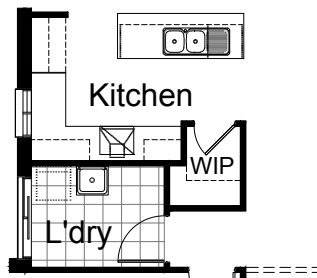
OPTION K3

Provide Kitchen upgrade including relocation of ref space & microwave space, laminated end panel, shelf above ref space, additional floor & wall cupboard space. (Reduces Family / Meals dimension from 4920mm to 4738mm). Provide ASW1809 ILO ASW1824 and reposition.



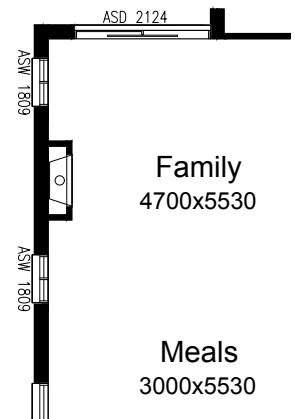
OPTION K2

Provide Kitchen and WIP Option by increasing Laundry width by 160mm, delete Linen cupboard, 2no. 520mm flush panel hinged doors and 3no. shelves, reduce L'dry passage by 200mm and provide site build plaster lined WIP with 3no. 300mm deep shelves and 1no. 720mm flush panel hinged door. Delete ASW 1824 from Meals. Decrease Kitchen opening/Bulkhead width by 190mm to 900mm in lieu of standard 1090mm. Provide 1no. 450mm base cupboard, 1no. 800mm base cupboard, 1no. 900mm base cupboard, 1no. laminated DW provision, 1no. 300mm base cupboard, 1no. laminated open shelf above refrigerator space, 1no. 450mm drawers, 1no. 1050mm blind carcass with 1no. 600mm door, 1no. 600mm under bench oven with 1no. 600mm wide canopy range hood, 2no. 600mm overhead cupboard, 1no. 300mm overhead cupboard and 1no. 1200mm x 850mm aluminium sliding window with additional tiled splash back and bench top to suit.



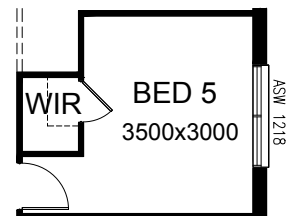
OPTION IP1

Provide Jetmaster SL-350 gas fireplace, 400mm off floor level in a 1400mm x 420mm boxed out plaster wall with a 4 sided black fascia to Family room side wall, delete 1no. 514mm x 2410mm aluminium sliding window to Family and relocate Family ASW 1809 windows by 238mm closer to fireplace.



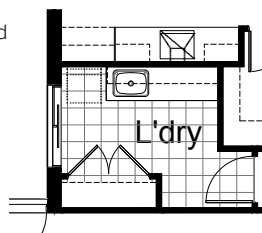
OPTION IP2

Provide Bed 5 in lieu of Rumpus including WIR and provide 1218 sliding window in lieu of 2024.



OPTION LD1

Provide Laundry upgrade with laminated insert trough, 2no. 800mm base cupboards, 1no. 300mm base cupboard, 2no. 800mm overhead cupboards, 1no. 300mm overhead cupboard and additional tiled splash back and bench top to suit. Relocate Linen, lengthen by 280mm and provide 2/720mm hinged doors.



Call 13 BURBANK Visit burbank.com.au

Burbank 
#noplacelikehome

*Copyright conditions. All photos and illustrations are representative only. Floor plans and specifications may be varied by Burbank without notice, the dimensions are diagrammatic only and a Building Contract with final drawings will display correct dimensions and detail. All designs are the property of Burbank and must not be used, reproduced, copied or varied, wholly or in part without written permission from an authorised Burbank representative. Copyright Burbank Australia (SA) Pty Ltd. ABN 96 165 533 406. BLD 266709.

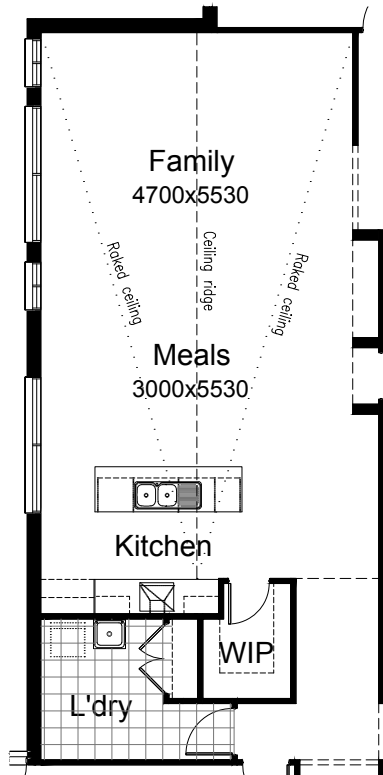
FLOORPLAN OPTIONS

SOMERTON 255

4 2 1 2

OPTION IP3

Provide raked ceiling with internal ridge to Kitchen, Meals & Family.



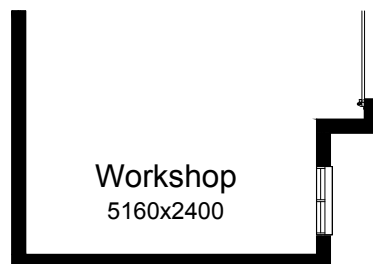
OPTION G1

Provide extension to Garage to create additional Storage area.
Increases area by 4.59m².
Increases width by 850mm.



OPTION G2

Provide extension to Garage to create Workshop area including additional window to suit.
Increases width by 2400mm.
Increases area by 13.54m².



Call 13 BURBANK Visit burbank.com.au

Burbank 
#noplacelikehome

*Copyright conditions. All photos and illustrations are representative only. Floor plans and specifications may be varied by Burbank without notice, the dimensions are diagrammatic only and a Building Contract with final drawings will display correct dimensions and detail. All designs are the property of Burbank and must not be used, reproduced, copied or varied, wholly or in part without written permission from an authorised Burbank representative. Copyright Burbank Australia (SA) Pty Ltd. ABN 96 165 533 406. BLD 266709.