

SPRINGFIELD

sheffield façade



lancaster façade



kent façade



wiltshire façade



harrogate façade



callington façade

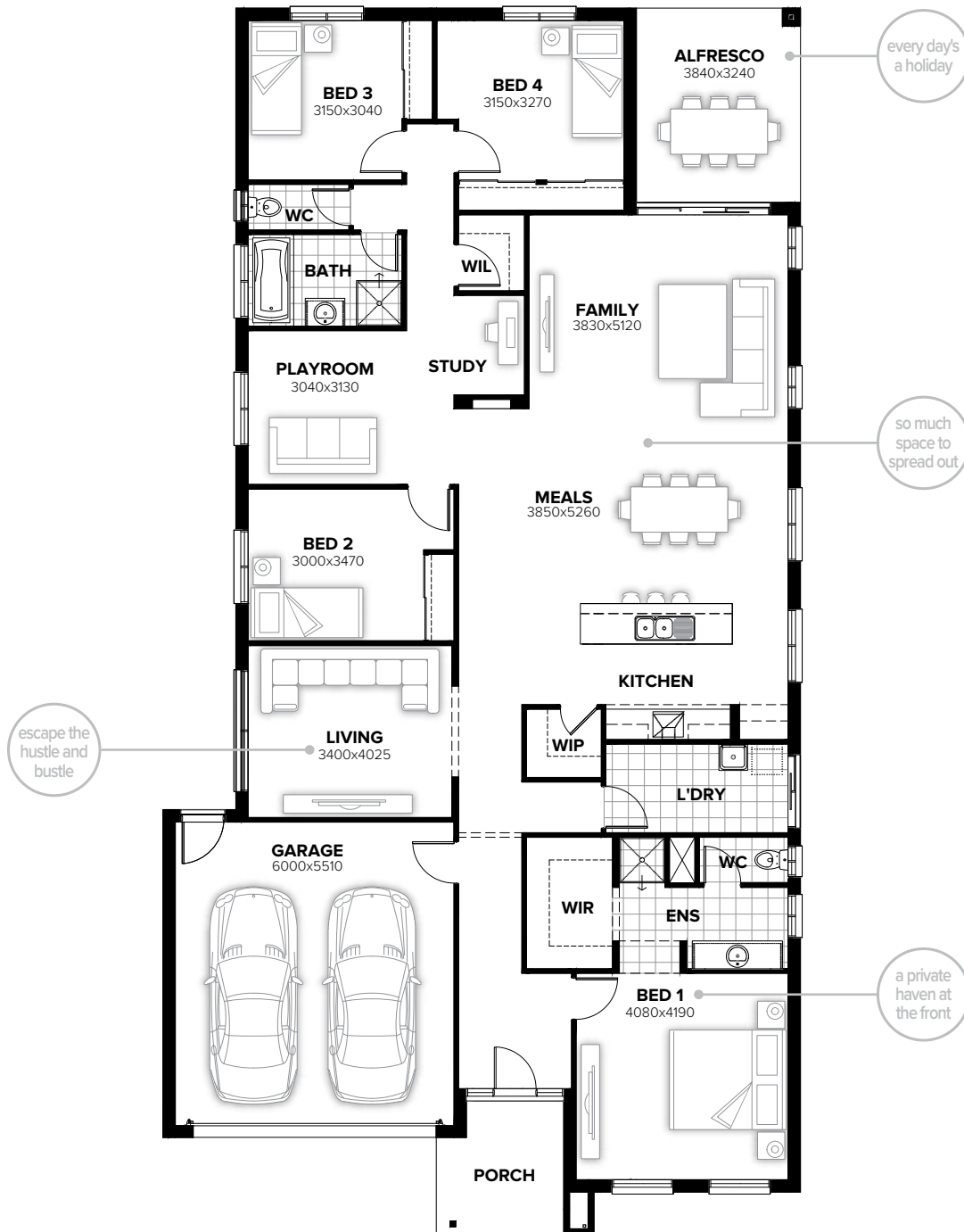


swansea façade



SPRINGFIELD 265

4 2 1 2



FLOORPLAN OPTIONS

Want to put a personal touch on your home? Speak to your New Home Consultant about the exciting range of ready-to-go design options for this floorplan. Popular design options include:

- Kitchen options
- Storage to garage option
- Laundry upgrades
- Gas fireplace to living room
- Ensuite upgrades

min lot width	14.0m
min lot depth	34.0m
home width	12.59m
home length	24.23m

residence	212.94sqm	22.92sq
alfresco	12.44sqm	1.34sq
porch	6.49sqm	0.70sq
garage	36.34sqm	3.91sq
total	268.21sqm	28.87sq

Listed details based on Sheffield façade floorplan (illustrated)

Call 13 BURBANK Visit burbank.com.au

Burbank 
#noplacelikehome

*Copyright conditions. All photos and illustrations are representative only. Floor plans and specifications may be varied by Burbank without notice, the dimensions are diagrammatic only and a Building Contract with final drawings will display correct dimensions and detail. All designs are the property of Burbank and must not be used, reproduced, copied or varied, wholly or in part without written permission from an authorised Burbank representative. Copyright Burbank Australia (SA) Pty Ltd. ABN 96 165 533 406. BLD 266709.

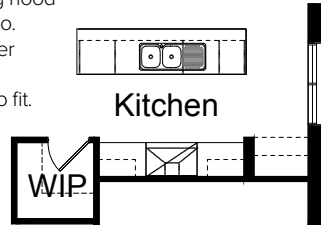
FLOORPLAN OPTIONS

SPRINGFIELD 265

4 2 1 2

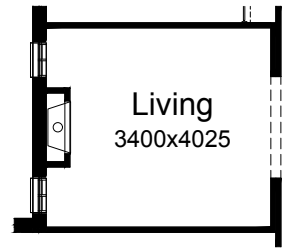
OPTION K1

Provide Kitchen upgrade with 1no. laminated cabinet above refrigerator space, 3no. 800mm base cupboards, 1no. 400mm base cupboard, 2no. 600mm overhead cupboards, 900mm upright oven with canopy range hood above, 1no. laminated DW provision, 1no. laminated MW provision with pot drawer below and 1no. 450mm drawers. WIP reduced by 110mm to allow cabinetry to fit.



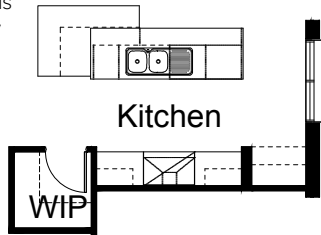
OPTION IP1

Provide Jetmaster SL-350 gas fireplace, 400mm off floor level in a 1400mm x 420mm boxed out plaster wall with a 4 sided black fascia to Living side wall with 2no. 1800mm x 610mm aluminium sliding windows in lieu of standard 1no. 1800mm x 2410mm window.



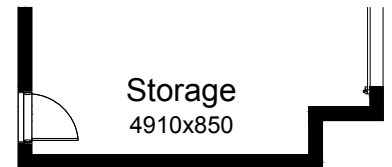
OPTION K2

Provide Kitchen upgrade as per Option K1 and with revised base cupboard layout to island bench. Provide 20mm stone bench top to island and widen to 900mm with additional base cupboards facing Meals. Provide 1800mm long by 1250mm wide x 20mm stone table to end of island bench, 750mm high with wrap down end panels.



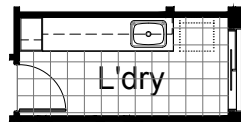
OPTION G1

Provide extension to Garage to create additional Storage area. Increases area by 4.58m². Increases width by 850mm.



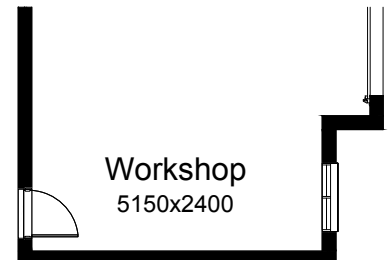
OPTION LD1

Provide Landry Option with additional 400mm laminate broom cupboard, 1no. 450mm base cupboard, 2no. 900mm base cupboards, 12mm stone with 16mm shadow line bench top, 1no. 450mm overhead cupboard and 2no. 900mm overhead cupboards with additional tiled splash back and bench top to suit.



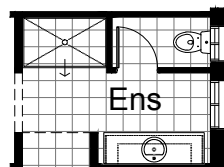
OPTION G2

Provide extension to Garage to create Workshop area including additional window to suit. Increases width by 2400mm. Increases area by 13.51m².



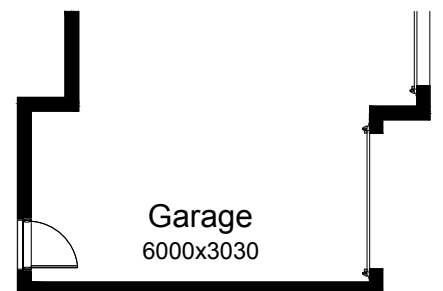
OPTION ENS1

Provide Ensuite Option with 1500mm x 900mm tiled shower base ILO 900mm x 900mm tiled shower base & remove void between shower and WC.



OPTION G3

Provide triple car Garage including additional roller door to front. Increases area by 20.51m². Increases width by 3120mm.



Call 13 BURBANK Visit burbank.com.au

Burbank 
#noplacelikehome

*Copyright conditions. All photos and illustrations are representative only. Floor plans and specifications may be varied by Burbank without notice, the dimensions are diagrammatic only and a Building Contract with final drawings will display correct dimensions and detail. All designs are the property of Burbank and must not be used, reproduced, copied or varied, wholly or in part without written permission from an authorised Burbank representative. Copyright Burbank Australia (SA) Pty Ltd. ABN 96 165 533 406. BLD 266709.