

STEPNEY

sheffield façade



lancaster façade



kent façade



wiltshire façade



harrogate façade



callington façade

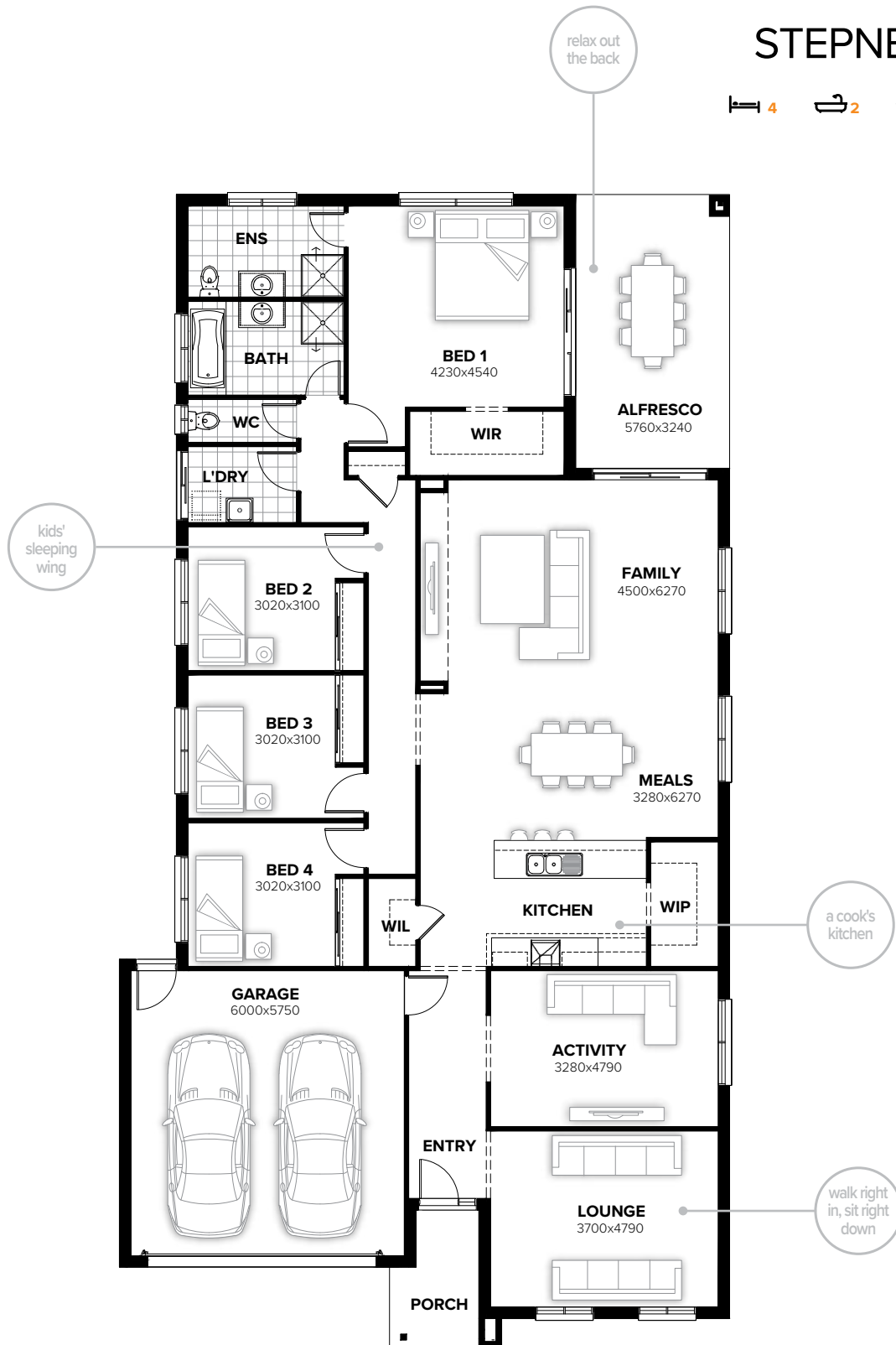


swansea façade



STEPNEY 280

4 2 1 2



FLOORPLAN OPTIONS

Want to put a personal touch on your home? Speak to your New Home Consultant about the exciting range of ready-to-go design options for this floorplan.

Popular design options include:

- Kitchen options
- Laundry options
- Ensuite upgrades
- Alfresco option
- Study option to WIL space
- WIR to bed 4 in lieu of WIL

min lot width	14.0m
min lot depth	32.0m
home width	12.83m
home length	23.63m

residence	217.56sqm	23.42sq
alfresco	18.66sqm	2.01sq
porch	4.90sqm	0.53sq
garage	37.89sqm	4.08sq
total	279.01sqm	30.03sq

Listed details based on Sheffield façade floorplan (illustrated)

Call 13 BURBANK Visit burbank.com.au

Burbank 
#noplacelikehome

*Copyright conditions. All photos and illustrations are representative only. Floor plans and specifications may be varied by Burbank without notice, the dimensions are diagrammatic only and a Building Contract with final drawings will display correct dimensions and detail. All designs are the property of Burbank and must not be used, reproduced, copied or varied, wholly or in part without written permission from an authorised Burbank representative. Copyright Burbank Australia (SA) Pty Ltd. ABN 96 165 533 406. BLD 266709.

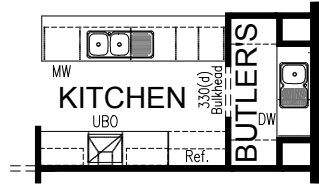
FLOORPLAN OPTIONS

STEPNEY 280



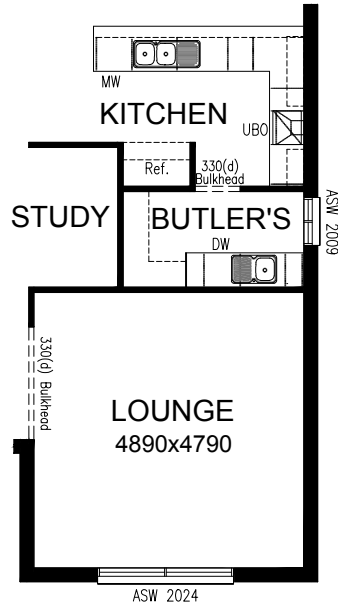
OPTION K1

Provide Kitchen upgrade converting Walk-in Pantry to Butler's Pantry containing extra sink, bench space and shelving. Move dishwasher to Butler's Pantry. Reconfigure base cupboards to suit.



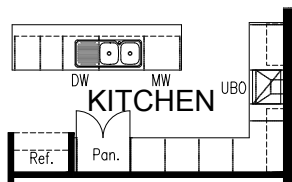
OPTION K2

Provide Kitchen upgrade with L-shaped bench top, Butler's Pantry and Study Nook. Butler's Pantry to include extra sink, bench top, shelving and ASW 2009 window. Reconfigure Kitchen base cupboards, under bench oven, cook top and rangehood to suit. Remove Activity room and add 1190mm length to Lounge Room.



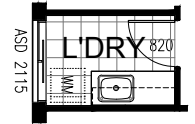
OPTION K3

Provide Kitchen option with L-shaped bench top. Remove Walk-in Pantry and provide laminate pantry cupboard. Reconfigure base cupboards, under bench oven, cook top and rangehood to suit.



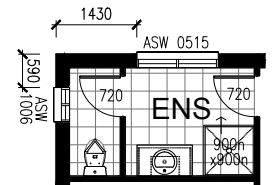
OPTION LD1

Provide Laundry option with additional laminate counter with bench top in lieu of standard stainless steel unit. Provide extra base cupboards, overhead cupboards, additional tiled splashback and bench top to suit.



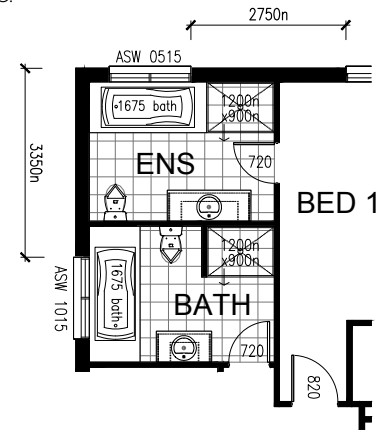
OPTION ENS1

Provide stud and plaster wall, and 720 hinged door to Ensuite to create enclosed WC. Add ASW 1006 window to new WC. Move ASW 0515 window to suit.



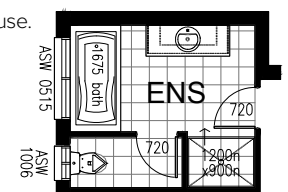
OPTION ENS2

Provide Ensuite and Bathroom upgrade. Ensuite upgrade includes 1200mm wide tiled shower base in lieu of 900mm base. Add 1675 bath, and replace 982mm vanity with 1482mm vanity. Move ASW 0515 window to suit. Bathroom upgrade includes toilet from WC and 1200mm wide tiled shower base. Both Ensuite and Bathroom upgrades must be done as the same Option which removes enclosed WC.



OPTION ENS3

Provide Ensuite upgrade including additional 1675 bath and upgraded shower to 1200mm tiled base. Also add stud and plaster wall to enclose WC and ASW 1006 window. Move ASW 0515 window to adjacent wall to suit. Note: Option adds 960mm to length of house.



Call 13 BURBANK Visit burbank.com.au



*Copyright conditions. All photos and illustrations are representative only. Floor plans and specifications may be varied by Burbank without notice, the dimensions are diagrammatic only and a Building Contract with final drawings will display correct dimensions and detail. All designs are the property of Burbank and must not be used, reproduced, copied or varied, wholly or in part without written permission from an authorised Burbank representative. Copyright Burbank Australia (SA) Pty Ltd. ABN 96 165 533 406. BLD 266709.

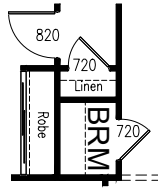
FLOORPLAN OPTIONS

STEPNEY 280



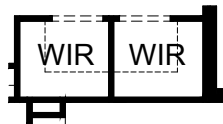
OPTION IP1

Convert Walk-in Linen to a Broom cupboard accessed from Kitchen and small Linen cupboard accessed from Passage. Linen cupboard to include extra shelving and 720 hinged door.



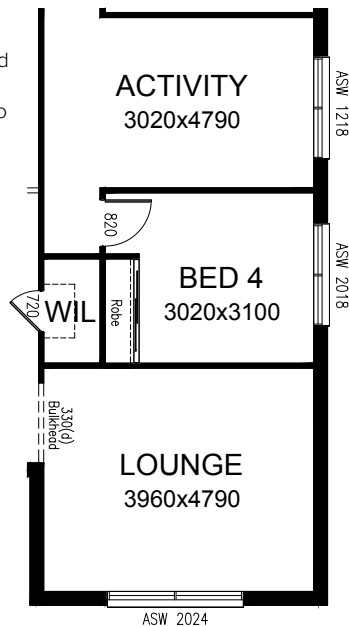
OPTION IP2

Provide stud and plaster wall to Walk-in Robe to create 2no. separate Walk-in Robes. Add 800mm wide opening to suit.



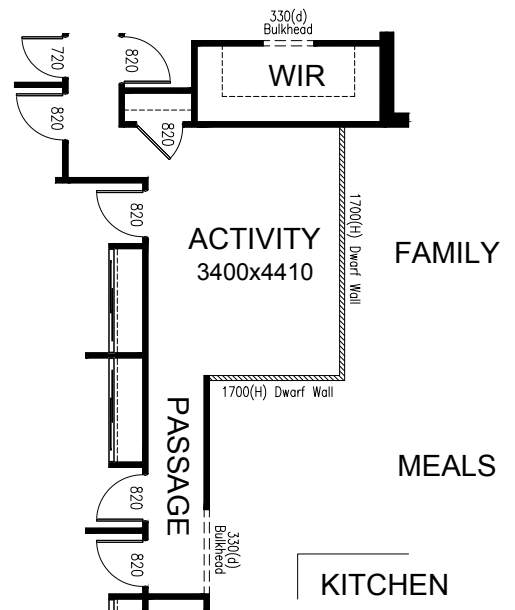
OPTION IP3

Provide floor plan alternative switching Bed 4 and Activity Room. Walk-in Linen and Robe to move also to suit. Lounge Room to increase in length by 260mm. Only available with Option IP6 (Mirrored rear section of house).



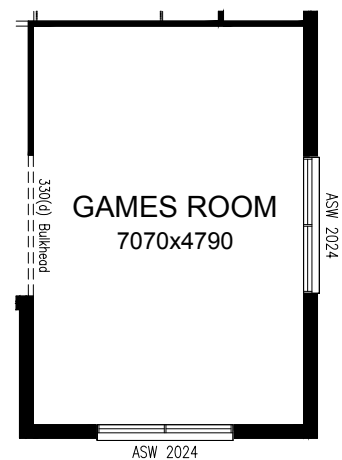
OPTION IP4

Provide floor plan alternative adding 1700mm high stud and plaster dwarf wall to create Activity space adjacent to Family room accessed from Passage. Only available with Option K2.



OPTION IP5

Provide floor plan alternative by removing stud and plaster wall between Lounge and Activity Rooms to create oversized Games room. Adjust room opening and bulkhead to suit. Move ASW 2018 windows to suit.



Call 13 BURBANK Visit burbank.com.au

Burbank 
#noplacelikehome

*Copyright conditions. All photos and illustrations are representative only. Floor plans and specifications may be varied by Burbank without notice, the dimensions are diagrammatic only and a Building Contract with final drawings will display correct dimensions and detail. All designs are the property of Burbank and must not be used, reproduced, copied or varied, wholly or in part without written permission from an authorised Burbank representative. Copyright Burbank Australia (SA) Pty Ltd. ABN 96 165 533 406. BLD 266709.

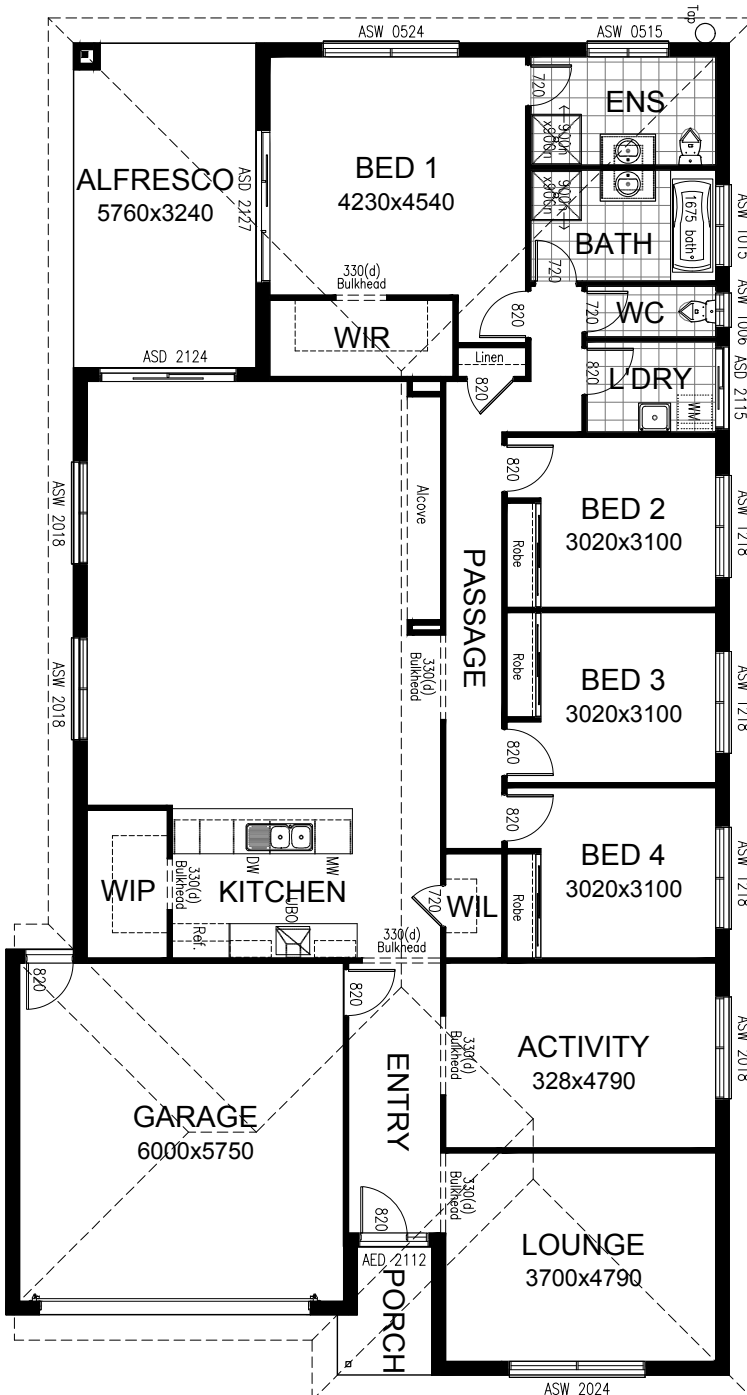
FLOORPLAN OPTIONS

STEPNEY 280



OPTION IP6

Mirrored rear section of the house.



OPTION IP7

Provide floor plan option with central Bathroom, Laundry & WC. Linen closet with sliding doors added to hallway. Ensuite layout flipped and window moved to side of house.



Call 13 BURBANK Visit burbank.com.au



*Copyright conditions. All photos and illustrations are representative only. Floor plans and specifications may be varied by Burbank without notice, the dimensions are diagrammatic only and a Building Contract with final drawings will display correct dimensions and detail. All designs are the property of Burbank and must not be used, reproduced, copied or varied, wholly or in part without written permission from an authorised Burbank representative. Copyright Burbank Australia (SA) Pty Ltd. ABN 96 165 533 406. BLD 266709.

FLOORPLAN OPTIONS

STEPNEY 280

4 2 1 2

OPTION G1

Provide extension to Garage to create additional Storage area.
Increases area by 4.53m².
Increases width by 840mm.



OPTION G2

Provide extension to Garage to create Workshop area including additional window to suit.
Increases width by 2400mm.
Increases area by 13.51m².



OPTION G3

Provide triple car Garage including additional roller door to front.
Increases area by 20.51m².
Increases width by 3120mm.



Call 13 BURBANK Visit burbank.com.au

Burbank 
#noplacelikehome

*Copyright conditions. All photos and illustrations are representative only. Floor plans and specifications may be varied by Burbank without notice, the dimensions are diagrammatic only and a Building Contract with final drawings will display correct dimensions and detail. All designs are the property of Burbank and must not be used, reproduced, copied or varied, wholly or in part without written permission from an authorised Burbank representative. Copyright Burbank Australia (SA) Pty Ltd. ABN 96 165 533 406. BLD 266709.