

TUSMORE

sheffield façade



lancaster façade



kent façade



wiltshire façade



harrogate façade



callington façade



swansea façade



All façade images are artist's impressions only. These images may contain internal or external upgrade items such as feature renders and timber look garage doors. Images contain items not supplied by Burbank, which include furniture, landscaping, fencing and external lighting. See your New Home Consultant for full specifications.

TUSMORE 225

4 2 1 2



FLOORPLAN OPTIONS

Want to put a personal touch on your home? Speak to your New Home Consultant about the exciting range of ready-to-go design options for this floorplan.

Popular design options include:

- Kitchen options
- Laundry upgrades
- Ensuite upgrades
- Storage to garage option
- Gas fireplace to living room

min lot width	14.0m
min lot depth	30.0m
home width	11.99m
home length	21.23m

residence	169.34sqm	18.23sq
alfresco	12.52sqm	1.35sq
porch	6.49sqm	0.70sq
garage	36.48sqm	3.93sq
total	224.83sqm	24.20sq

Listed details based on Sheffield façade floorplan (illustrated)

Call 13 BURBANK Visit burbank.com.au

Burbank 
#noplacelikehome

*Copyright conditions. All photos and illustrations are representative only. Floor plans and specifications may be varied by Burbank without notice, the dimensions are diagrammatic only and a Building Contract with final drawings will display correct dimensions and detail. All designs are the property of Burbank and must not be used, reproduced, copied or varied, wholly or in part without written permission from an authorised Burbank representative. Copyright Burbank Australia (SA) Pty Ltd. ABN 96 165 533 406. BLD 266709.

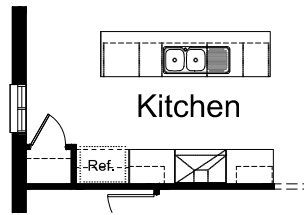
FLOORPLAN OPTIONS

TUSMORE 225

 4
  2
  1
  2

OPTION K1

Provide Kitchen upgrade including 2no. 600mm overhead cupboards, 2no. 800mm base cupboards, 900mm upright cooker with 900mm canopy range hood above. Island benchtop fittings unchanged.



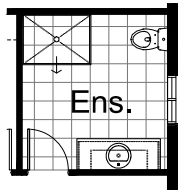
OPTION G1

Provide extension to Garage to create additional Storage area. Increase area by 4.58m². Increases width by 850mm.



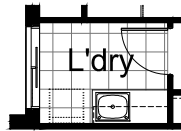
OPTION ENS1

Provide Ensuite upgrade with 900mm x 1220mm tiled shower base in lieu of standard 900mm x 900mm polymarble shower base and relocate Ensuite window 120 to rear & remove WC/ Ensuite wall, door and 10-06 window to Ensuite WC.



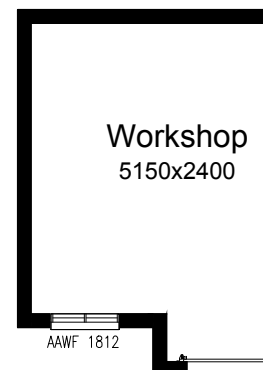
OPTION LD1

Provide Laundry upgrade with laminated cabinet with insert trough, 800mm base cupboard, 450mm Base cupboard, 800mm overhead cupboard, 450mm overhead cupboard and tiled splashback to suit I.L.O standard



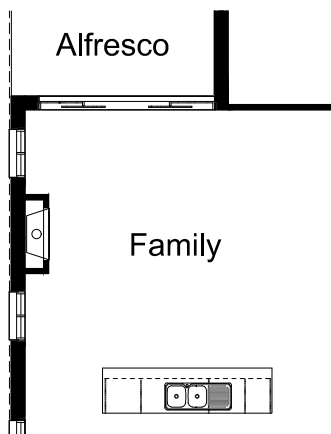
OPTION G2

Provide extension to Garage to create Workshop area including additional window to suit. Increase area by 13.51m². Increases width by 2400mm.



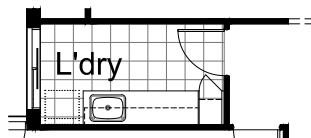
OPTION IP1

Provide Jetmaster SL-350 gas fireplace, 400mm off floor level in a 1400mm x 420mm boxed out plaster wall with a 4 sided black fascia to Family room side wall. Provide 2No. 2060x850 windows in lieu of standard 1027x1810 window



OPTION LD2

Provide Laundry upgrade by deleting standard broom cupboard and extend Laundry with by 990mm. Provide additional 2no. 800mm base cupboards, 1no. 400mm base cupboard, 1no. 400mm tall broom cupboard, 1no. 400mm overhead cupboard, 1no. 800mm open shelf with 1no. hanging rail and 1no. 800mm overhead cupboard with additional tiled splash back and bench top to suit.



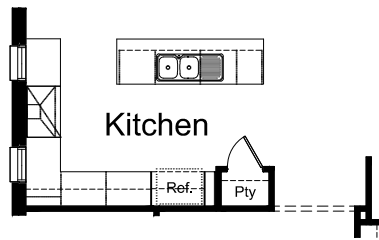
Call 13 BURBANK Visit burbank.com.au

Burbank 
 #noplacelikehome

*Copyright conditions. All photos and illustrations are representative only. Floor plans and specifications may be varied by Burbank without notice, the dimensions are diagrammatic only and a Building Contract with final drawings will display correct dimensions and detail. All designs are the property of Burbank and must not be used, reproduced, copied or varied, wholly or in part without written permission from an authorised Burbank representative. Copyright Burbank Australia (SA) Pty Ltd. ABN 96 165 533 406. BLD 266709.

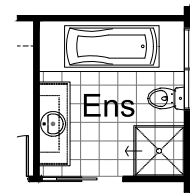
OPTION K2

Provide Kitchen upgrade by providing 1no. 800mm base cupboard to island bench in lieu of 1no. 800mm & 1no. 400mm base cupboards. Provide 900mm upright cooker and range hood and provide 2no. 1200x610 aluminium fixed windows to either side of cooker in lieu of 1no. 2060x1810 aluminium sliding window. Provide floor to bulkhead wine rack adjoining Refrigerator space. Relocate site built plaster lined stud walls with 1no. 620mm door and extend Pantry by 50mm. Provide 2no. 800mm and 1no. 450mm overhead cupboards, 3no. 800mm base cupboards and 1no. 1050mm blind carcass with 600mm cupboard door and additional bench top and tiled splash back to suit.



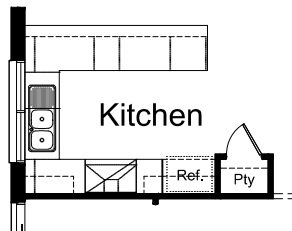
OPTION ENS2

Provide Ensuite upgrade with additional bath and tiled hob, 1no. 1027mm x 1450mm aluminium sliding window in lieu of standard, 1no. 720mm sliding door to Ensuite in lieu of standard and delete site built plaster lined walls to WC and relocate shower, vanity unit and toilet to suit.



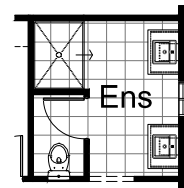
OPTION K3

Provide Kitchen redesign by providing U-Shaped Kitchen in lieu of standard island bench. Relocate site built plaster lined stud walls with 1no. 620mm door and extend Pantry by 50mm. Provide 1no. 300mm and 1no. 700mm overhead cupboards, 1no. 450mm base cupboard to side of upright oven, 2no. 900mm base cupboards, 1no. 900mm blind carcass with 450mm laminated door and 1no. 1050mm blind carcass with 600mm laminated door. Relocate MW space, dishwasher space and 450mm drawers with 1200x1810 aluminium sliding window in lieu of 2057x850 sliding window, tiled splash back and bench top to suit.



OPTION ENS3

Provide Ensuite upgrade with additional 1no. 900mm x 1200mm shower base in lieu of standard, 2no. 782mm wide vanity units in lieu of 1no. 1482mm wide vanity unit, 1no. 800mm wide opening with bulkhead over in lieu of 1no. 720mm hinged door and relocate WC and 1027mm x 610mm aluminium sliding window to suit and delete 1no. 1800mm x 850mm aluminium sliding window.



OPTION K4

Provide Kitchen upgrade with additional 1200mm deep island bench with 2no. 600mm base cupboards facing Family room, 1no. laminated MW provision, 1no. 900mm base cupboard, 1no. laminated DW provision & 1no. 450mm drawers. Relocate site built plaster lined stud walls with 1no. 620mm door and extend Pantry by 50mm. Provide 2no. 700mm base cupboards, 1no. 900mm upright oven with retractable range hood over, 2no. 700mm overhead cupboards and additional tiled splash back and bench top to suit.

