

Facades available:

- Callington, Eastwood, Harrogate
- Kent, Lancaster, Sheffield
- Swansea, Wiltshire

Overall home width 27.95m
Overall home length 12.23m

Residence	235.2m ²	25.3sq
Garage	37.4m ²	4.0sq
Porch	6.6m ²	0.7sq
Verandah	3.2m ²	0.4sq
Total	282.4m²	30.4sq

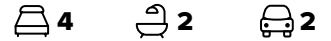
Listed details based on Sheffield facade floorplan (illustrated)

FLOORPLAN OPTIONS

We personalise our floorplans. Talk to us about our huge range of ready-to-go design options or simply visit www.burbank.com.au/south-australia for more details.

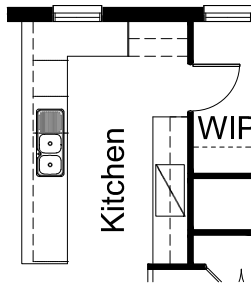
*Copyright conditions. All photos and illustrations are representative only. Floor plans and specifications may be varied by Burbank without notice, the dimensions are diagrammatic only and a Building Contract with final drawings will display correct dimensions and detail. All designs are the property of Burbank and must not be used, reproduced, copied or varied, wholly or in part without written permission from an authorised Burbank representative. Copyright Burbank Australia (SA) Pty Ltd. ABN 96 165 533 406. BLD 266709.

Call 13 BURBANK
Visit burbank.com.au



OPTION K1

Provide 'L' shape Kitchen with additional
2no. 800mm base cupboards,
2no. 800mm overhead cupboards,
1no. 900mm underbench oven with
1no. 900mm retractable rangehood over,
1no. 450mm base cupboard,
1no. 1050mm blind carcass with 1no. 600mm door,
1no. laminated MW provision,
1no. laminated DW provision,
2no. 900mm base cupboards and
1no. 450mm drawers.
Decrease Meals area by 200mm,
Relocate WIP hinged door and provide
1no. AFW1209 aluminium fixed window in lieu of standard
Additional tiled splash back and benchtop to suit.



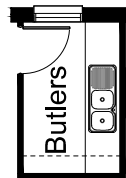
OPTION G1

Provide extension to Garage to create
additional Storage area.
Increases area by 4.58m².
Increases width by 850mm.



OPTION K2

Provide Butlers Option in lieu of standard WIP with
2no. 800mm base cupboards,
2no. 300mm base cupboards,
Double bowl sink,
5no. laminated wall to wall shelves,
Additional tiled splash back and bench top to suit in lieu of
standard.



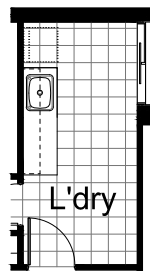
OPTION G2

Provide workshop to Garage including
1no. AAWF2015 aluminium feature awning
window.
Increases area by 13.51m².
Increases width by 2400mm.



OPTION LD1

Provide Laundry option with
2no. 900mm base cupboards,
2no. 900mm overhead cupboards,
Additional tiled splashback and benchtop to suit.

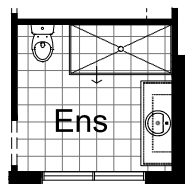


OPTION G3

Provide triple car Garage including
Additional roller door to front,
Delete 1no. timber post to verandah and
extend
verandah width to suit.
Increases verandah area by 6.06m².
Increases garage area by 24.13m².
Increases width by 3600mm.

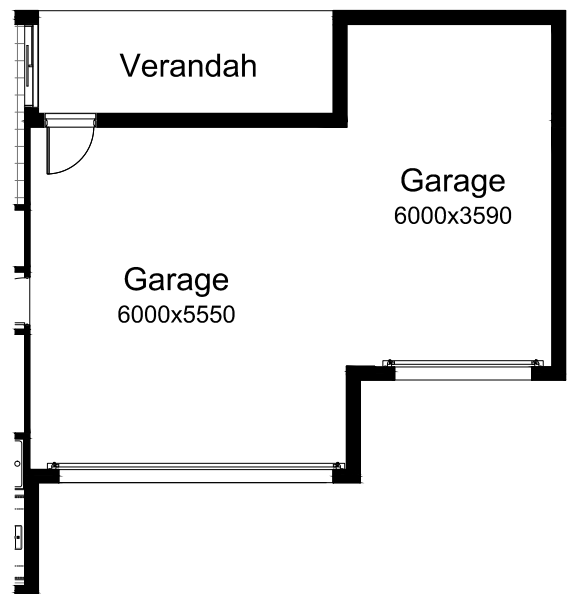
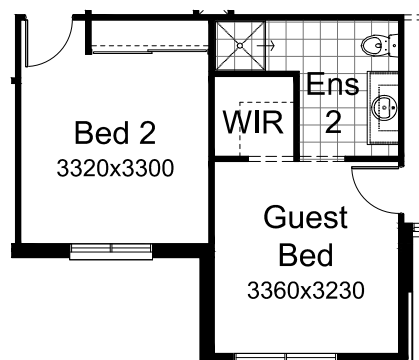
OPTION ENS1

Provide Ensuite upgrade with
900mm x 1800mm tiles shower base in lieu of standard.



OPTION IP1

Provide Guest Bedroom in lieu of
standard Study, WIR and WIL. Provide
additional site built plaster lined robe to
Bed 2 with 2no. Gyprock sliding doors
and 1no. hanging rail/Shelf, 1no.
900mm tiled in shower base, 1no.
1282mm wide vanity unit and toilet and
2no. 800mm wide openings with
bulkhead above.



OPTION IP2

Provide Real Flame Inspire 900 gas fireplace, 400mm off floor level in a 1400mm x 420mm boxed out plaster wall with a 4 sided black fascia to Family/Meals and relocate Family/Meals sliding door and window to suit.

