

GROUND FLOOR



FIRST FLOOR

FLOORPLAN OPTIONS

We personalise our floorplans. Talk to us about our huge range of ready-to-go design options or simply visit www.burbank.com.au/south-australia for more details.

Facades available:	
Cambridge, Coventry, Halifax, Yorke	
Northampton, Oxford, Westminster	
Overall home width	10.97m
Overall home length	16.91m

Residence	257.2m ²	27.7sq
Garage	37.4m ²	4.0sq
Porch	3.1m ²	0.3sq
Alfresco	12.9m ²	1.4sq
Total	310.6m²	33.4sq

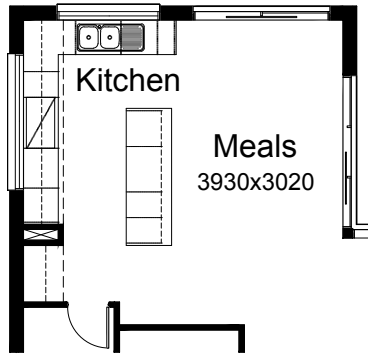
Listed details based on Coventry facade floorplan (illustrated)

*Copyright conditions. All photos and illustrations are representative only. Floor plans and specifications may be varied by Burbank without notice, the dimensions are diagrammatic only and a Building Contract with final drawings will display correct dimensions and detail. All designs are the property of Burbank and must not be used, reproduced, copied or varied, wholly or in part without written permission from an authorised Burbank representative. Copyright Burbank Australia (SA) Pty Ltd. ABN 96 165 533 406. BLD 266709.

Call 13 BURBANK
Visit burbank.com.au

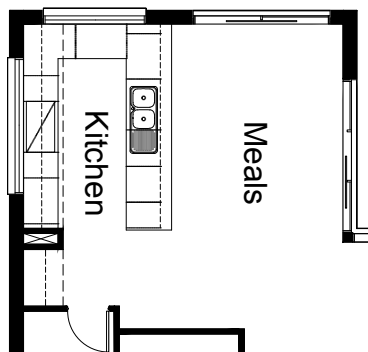
OPTION K1

Provide 'L' shaped Kitchen Option with
2no. 450mm base cupboards,
2no. 800mm base cupboards,
1no. 700mm base cupboard,
1no. 600mm base cupboard,
1no. 900mm x 900mm corner base cupboard,
1no. 900mm under bench oven with 900mm hotplate and retractable
rangehood concealed within 900mm overhead cupboard,
1no. laminated DW provision,
1no. 300mm base cupboard,
1no. laminated MW provision with pot drawer below,
1no. 450mm drawers,
2no. 600mm overhead cupboards,
2no. 700mm overhead cupboards,
1no. AFW0518 aluminium fixed window.
Relocate existing AFW0524 aluminium fixed window to Kitchen by
120mm to suit. Provide additional 1no. ASD2124 aluminium sliding door to Meals
in lieu of standard. Additional tiled splash back and bench top to suit.



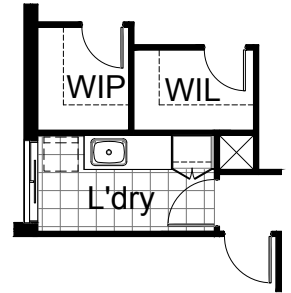
OPTION K2

Provide 'U' shaped Kitchen with
1no. AFW0518 aluminium fixed window,
4no. 600mm overhead cupboards,
1no. 800mm base cupboard,
2no. 450mm base cupboards,
1no. 900mm x 900mm corner base cupboard,
2no. 900mm base cupboards,
1no. 800mm blind base carcass with 1no. 350mm door,
1no. laminated DW provision,
1no. laminated MW provision with pot drawer below,
1no. 450mm drawers,
1no. 900mm underbench oven,
1no. 900mm hotplate
1no. retractable rangehood concealed within 900mm overhead carcass
Additional tiled splashback and benchtop to suit.



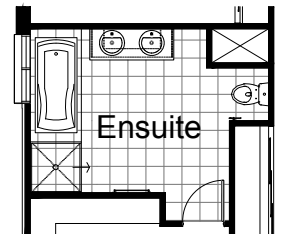
OPTION LD1

Provide Laundry Option by relocating 1no. 720mm
hinged door and extend Laundry
Provide 1no. 700mm laminated Linen cupboard with
2no. 350mm doors,
1no. 700mm base cupboard,
1no. 800mm base cupboard,
additional tiled splash back and bench top to suit.



OPTION ENS1

Provide Ensuite Option with
2no. basins to vanity unit,
1no. 1675mm bath with tiled hob,
1no. 900mm x 900mm tiled shower base in lieu of
standard
1no. ASW1212 aluminium sliding window in lieu of
standard.



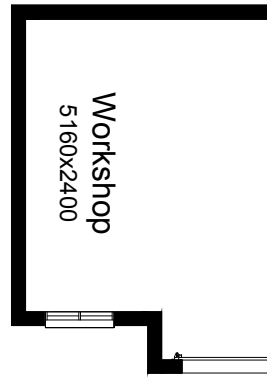
OPTION G1

Provide extension to Garage to
create additional Storage area.
Increases area by 4.59m².
Increases width by 850mm.



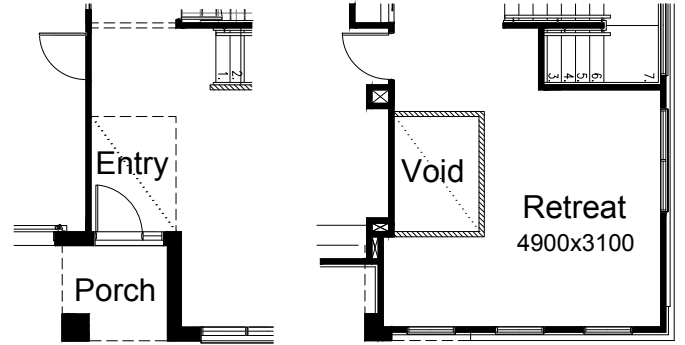
OPTION G2

Provide extension to Garage to create Workshop area including 1no. AAWF1812 aluminium feature awning window. Increases width by 2400mm. Increases area by 13.54m².



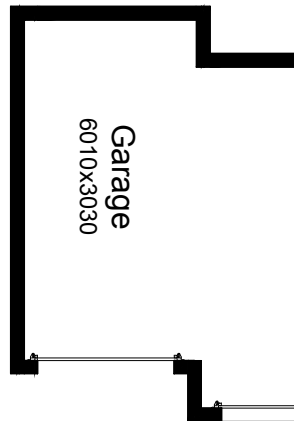
OPTION IP1

Provide Void area above Entry including 1020(h) plaster wall balustrade to Retreat.



OPTION G3

Provide triple car Garage including Additional roller door to front. Increases area by 20.51m². Increases width by 3120mm.



OPTION IP2

Provide Laundry Chute in lieu of ground and first floor voids.

