

**FLOORPLAN OPTIONS**

We personalise our floorplans. Talk to us about our huge range of ready-to-go design options or simply visit [www.burbank.com.au/south-australia](http://www.burbank.com.au/south-australia) for more details.

Listed details based on Sheffield facade floorplan (illustrated)

**Facades available:**

Sheffield, Aster, Eastwood,	
Hartford, Lancaster, Leawood,	
Newbury, Wiltshire	
<b>Overall home width</b>	<b>14.03m</b>
<b>Overall home length</b>	<b>22.31m</b>

Residence	214.8m <sup>2</sup>	23.1sq
Garage	36.3m <sup>2</sup>	3.9sq
Porch	6.8m <sup>2</sup>	0.7sq
Alfresco	15.3m <sup>2</sup>	1.6sq
<b>Total</b>	<b>273.2m<sup>2</sup></b>	<b>29.4sq</b>

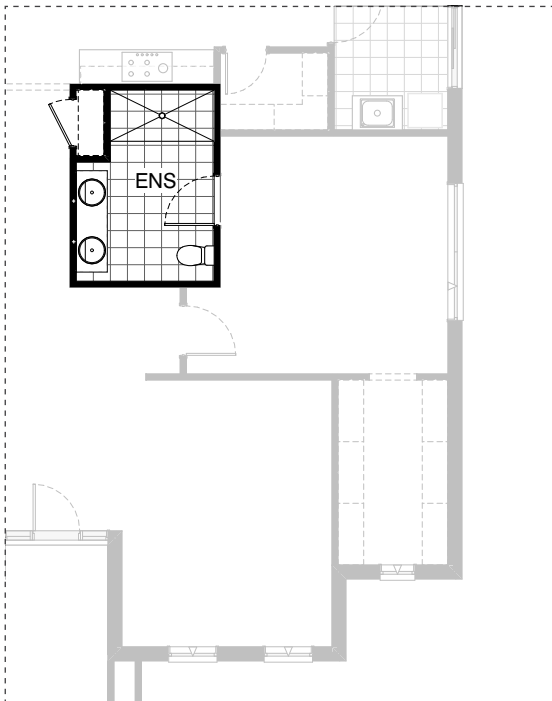
\*Copyright conditions. All photos and illustrations are representative only. Floor plans and specifications may be varied by Burbank without notice, the dimensions are diagrammatic only and a Building Contract with final drawings will display correct dimensions and detail. All designs are the property of Burbank and must not be used, reproduced, copied or varied, wholly or in part without written permission from an authorised Burbank representative. Copyright Burbank Australia (SA) Pty Ltd. ABN 96 165 533 406. BLD 266709.



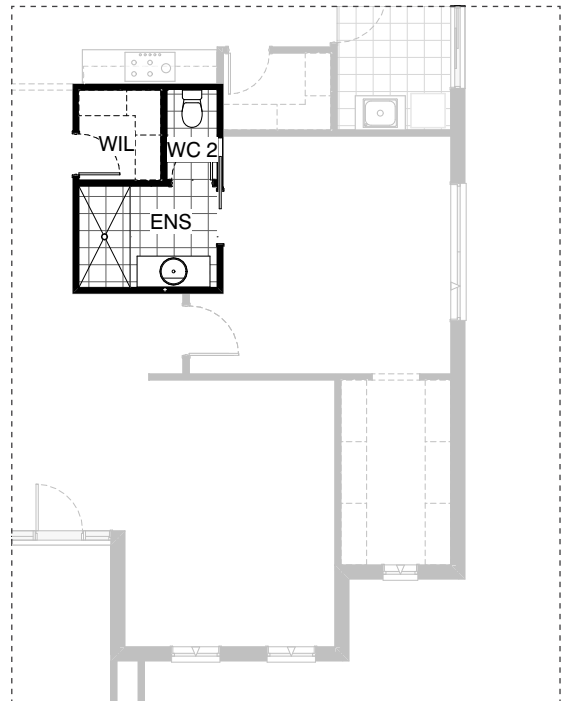
**K01**

**L01**

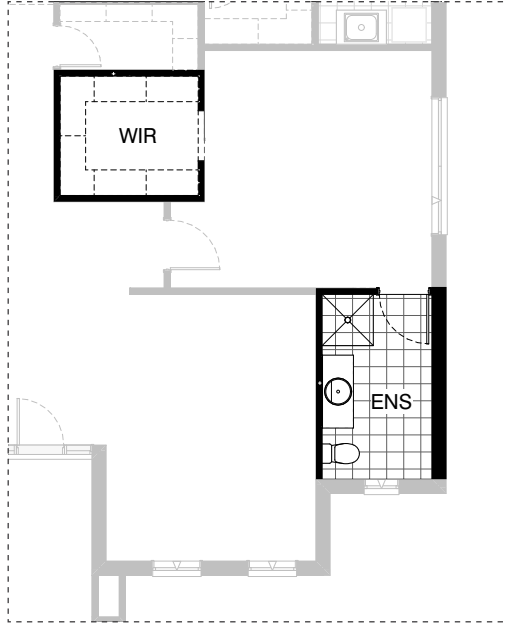
**EX01**



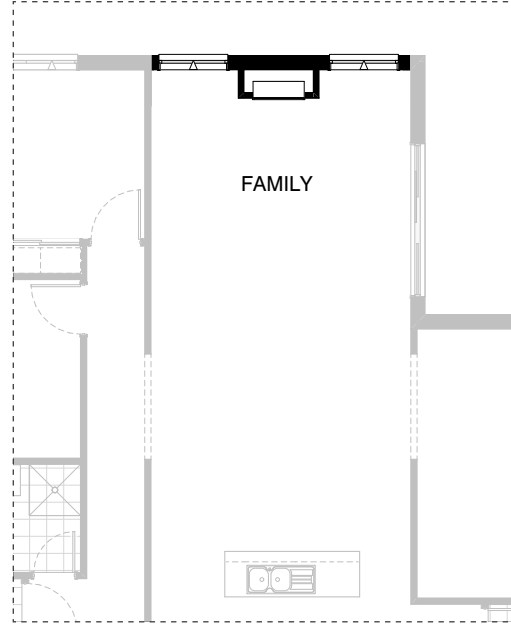
**EN01**



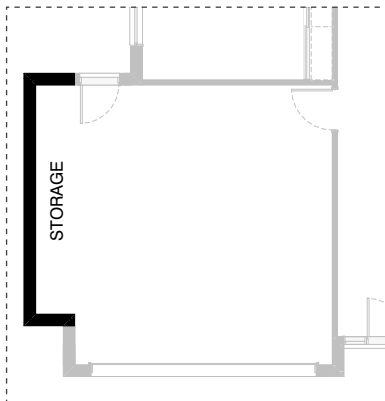
**EN02**



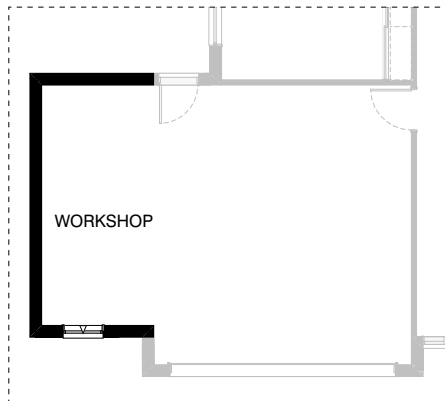
**IN01**



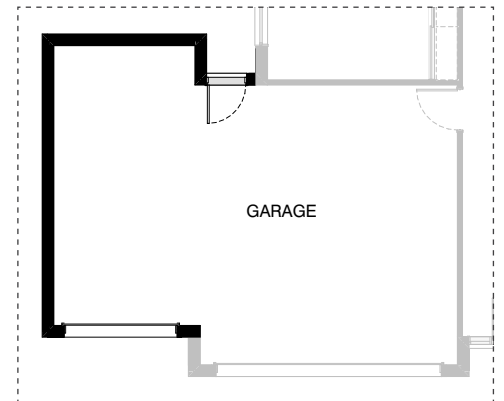
**IN02**



**G01**



**G02**



**G03**

**OPTION DESCRIPTIONS****K01 - Kitchen Option 01**

Provide Kitchen upgrade option with Butler's Pantry and upgraded laundry including:  
Additional nib wall to kitchen,  
Kitchen and island cupboards to remain the same.  
Butler's Pantry Includes:  
4No. 450mm laminated shelving  
Additional void to accommodate,  
3No. 800mm Base cupboards,  
3No. 800mm overhead cupboards,  
1No. 600mm open shelf unit,  
1No. microwave provision with pot drawer below,  
1No single bowl sink,  
Tiled splash back and benchtop to suit.

Laundry includes:

1No. 450mm full height laminated broom unit,  
1No. 800mm base cupboard,  
1No. 450mm overhead cupboard,  
2No. 900mm overhead cupboards,  
option provides open space under bench for washer and dryer side-by-side and raises the bench height to 950mm,  
(kicker height of base cabinets raises).  
Benchtop to be raised by 50mm to suit.  
Tiled splash back and benchtop to suit.

Notes:

Convert Ref. space to Linen with 2No. 520mm hinged doors.  
Relocate Ref. space between Kitchen and laundry.  
Bed 2 WIR reduced to suit.  
WIL relocated into the Laundry.  
Meals reduced by 360mm to suit.

**L01 - Laundry Option 01**

Provide Laundry upgrade  
laminated inset trough,  
1No. 800mm base cupboard,  
1No. 300mm base cupboard,  
1No. 800mm overhead cupboard and  
1No. 300mm overhead cupboard  
with additional tiled splash back and benchtop to suit.

**EX01 - External Option 01**

Provide Grand Alfresco option to rear of Family including 2No. 470mm x 470mm additional brick piers and earth floor.  
Increase area by 11.49m<sup>2</sup>.  
Increase length by 3000mm.

**EN01 - Ensuite Option 01**

Provide Ensuite upgrade by deleting site built plaster lined WIL and extend Ensuite length to suit.  
Provide 1830mm x 900mm wall to wall tiled shower base,  
1No. 1782mm wide vanity unit and plaster lined Linen cupboard with  
1No. 870mm flush panel hinged door and 450mm deep shelves to suit.

**EN02 - Ensuite Option 02**

Provide Ensuite upgrade by reducing WIL and provide site built plaster lined WC 2 with 720mm hinged door.  
Provide wall to wall 1780mm x 900mm tiled shower base by increasing Ensuite width and reducing Entry by 110mm.  
Relocate vanity unit and provide  
1No. 870mm flush panel cavity sliding door in lieu of hinged door.

**IN01 - Internal Option 01**

Relocate Ensuite with WIR and provide additional hanging rail and shelf to WIR.

**IN02 - Internal Option 02**

Provide Real Flame Inspire 900 gas fireplace, 400mm off floor level in a 1400mm x 500mm boxed out plaster wall with, 4 sided black fascia to Family room rear wall with capped gas point,  
2No. 2057mm X 1210mm aluminium awning windows in lieu of standard.

**G01 - Garage Option 01**

Provide extension to Garage to create additional Storage area.  
Increases area by 4.53m<sup>2</sup>.  
Increases width by 840mm.

**G02 - Garage Option 02**

Provide workshop to garage including,  
1No. 1800mm x 850mm aluminium awning feature window.  
Increases width by 2400mm.  
Increases area by 13.51m<sup>2</sup>.

**G03 - Garage Option 03**

Provide triple car Garage including  
1No. additional 2140mm x 2410mm Garage door as per colour selection.  
Increases area by 20.51m<sup>2</sup>.  
Increases width by 3120mm.