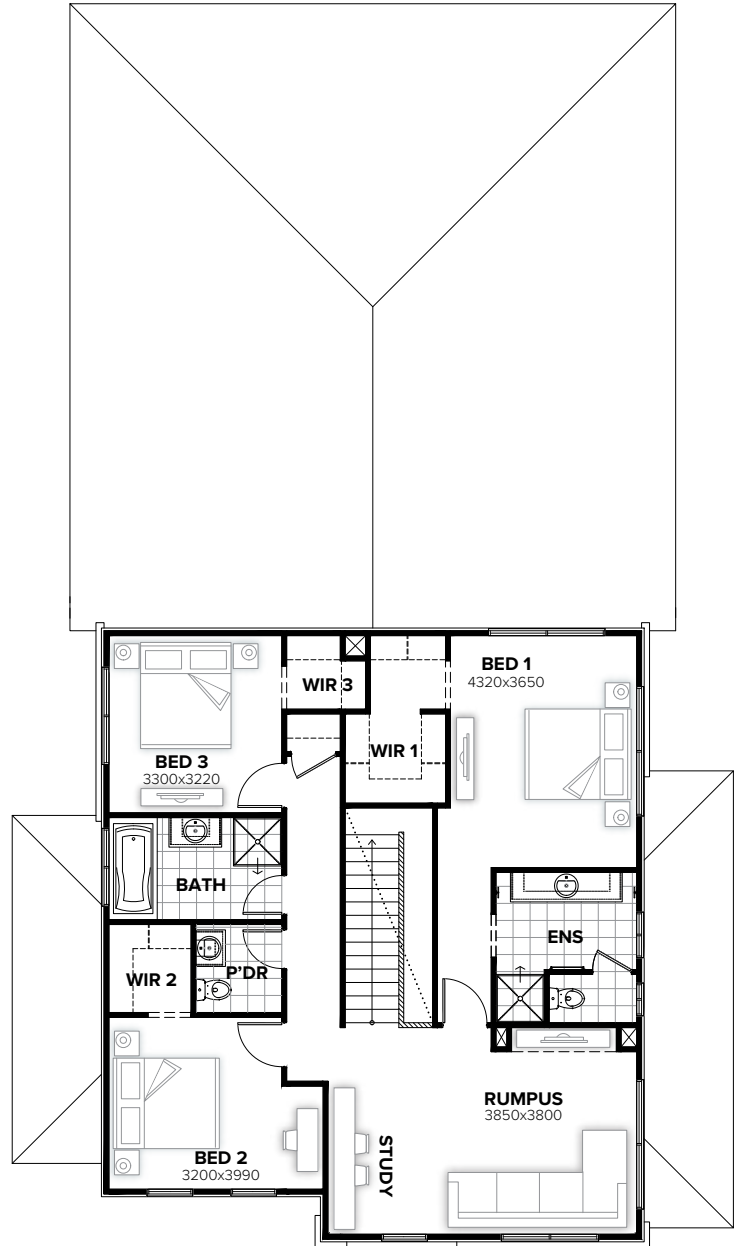


GROUND FLOOR



FIRST FLOOR

FLOORPLAN OPTIONS

We personalise our floorplans. Talk to us about our huge range of ready-to-go design options.

Facades available:

Byron, Norton, Colton, Gladstone
Winchester, Langdon, Bircher
Stratford

Overall home width 13.43m
Overall home length 22.67m

Residence	298.4m ²	32.1sq
Garage	38.5m ²	4.1sq
Porch	4.1m ²	0.4sq
Alfresco	19.7m ²	2.1sq
Total	360.7m²	38.8sq

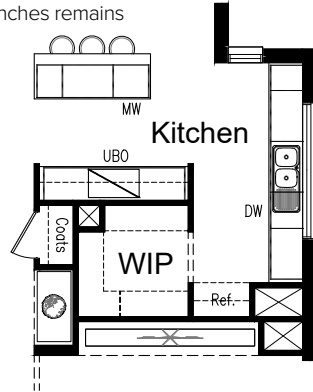
Listed details based on Byron facade floorplan (illustrated)

*Copyright conditions. All photos and illustrations are representative only. Floor plans and specifications may be varied by Burbank without notice, the dimensions are diagrammatic only and a Building Contract with final drawings will display correct dimensions and detail. All designs are the property of Burbank and must not be used, reproduced, copied or varied, wholly or in part without written permission from an authorised Burbank representative. Copyright Burbank Australia (NSW) Pty Ltd. ABN 88 610 822 770. NSW BL 295627C ACT BL 2016566.

Call 13 BURBANK
Visit burbank.com.au

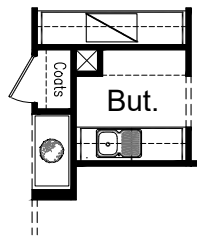
OPTION K1

Provide Kitchen upgrade option including:
900mm open shelf over refrigerator space,
1No. microwave provision and 900mm base cupboard in lieu of 2No. 800mm base cupboards to island bench.
Kitchen cabinetry to cooker and sink benches remains unchanged.



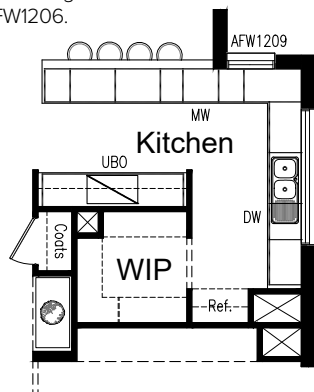
OPTION K2

Provide Butler's Pantry in lieu of Walk-in Pantry including:
2No. 900mm base cupboards,
2No. 900mm overhead cupboards,
single bowl sink with additional bench top and tiled splashback to suit.



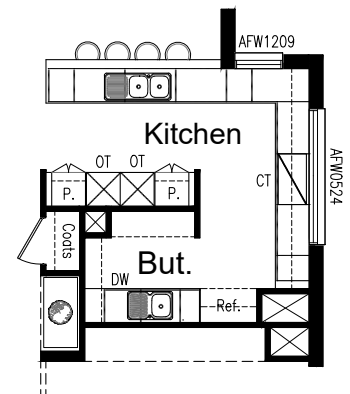
OPTION K3

Provide Kitchen upgrade option providing L-shaped bench top in lieu of Island including:
2No. 900mm base cupboards,
3No. 800mm base cupboards,
1No. 900mm blind corner base cupboard with 450mm door,
1No. 450mm base cupboard,
1No. 400mm base cupboard,
dishwasher provision,
microwave provision with pot drawer under,
450mm drawer unit,
900mm open shelf over refrigerator space,
additional bench top and tiled splashback to suit.
Kitchen cabinetry to cooker bench remains unchanged.
Provide AFW1209 fixed window in lieu of AFW1206.



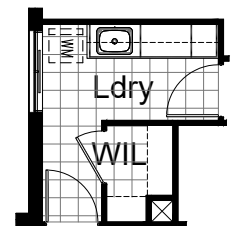
OPTION K4

Provide L-shaped Kitchen upgrade option providing Butler's Pantry in lieu of Walk-in Pantry including:
900mm retractable rangehood,
900mm electric cooktop,
2No. oven towers with 600mm ovens and microwave provisions,
450mm drawer unit,
6No. 900mm base cupboards,
1No. 900mm blind corner base cupboard with 450mm door,
2No. 450mm base cupboards,
2No. 900mm overhead cupboards,
2No. 450mm overhead cupboards,
1No. 900mm open shelf over refrigerator space,
2No. 600mm full height laminate Pantry cupboards with 5No. 450mm deep shelves,
additional bench top and tiled splashback to suit.
Butler's includes:
1No. 700mm base cupboard,
1No. 350mm base cupboard,
dishwasher provision,
300mm open shelving unit,
single bowl sink with additional bench top and tiled splashback to suit.
Remove AFW1206 and AFW1224 fixed windows and provide AFW1209 and AFW0524 fixed windows.



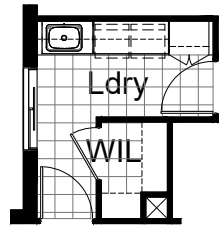
OPTION LD1

Provide Laundry upgrade including laminate base cupboards and stainless steel inset trough including:
2No. 900mm base cupboards,
1No. 450mm base cupboard,
2No. 900mm overhead cupboards,
1No. 450mm overhead cupboard,
additional bench top and tiled splashback to suit.



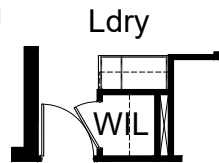
OPTION LD2

Provide Laundry upgrade including laminate base and overhead cupboards and stainless steel inset trough including
 1No. 900mm base cupboard,
 2No. 900mm overhead cupboards,
 1No. 450mm overhead cupboard,
 1No. 700mm full height laminate Linen cupboard, additional bench top and tiled splashback to suit.
 Option also provides open space under bench for washer and dryer side-by-side and raises the bench height to 950mm from FFL (kicker height raises) additional bench top and tiled splashback to suit.



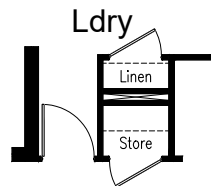
OPTION LD3

Provide Laundry upgrade including laminate base and overhead cupboards, Walk-in Linen reduces in size to accommodate, including:
 1No. 800mm base cupboards,
 1No. 350mm base cupboard,
 1No. 800mm overhead cupboards,
 1No. 350mm overhead cupboard,
 820mm hinged door to Walk-in Line in lieu of standard,
 150mm wide internal Plumbing Stack as shown.



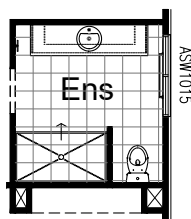
OPTION LD4

Provide alternate Laundry/Garage storage in lieu of Walk-in Linen including:
 1No. Linen closet with 1No. 920mm hinged door and 4No. 450mm shelves,
 1No. Store accessed from Garage with 1No. 920mm hinged door and 4No. 450mm shelves,
 120mm wide internal Plumbing Stack as shown.



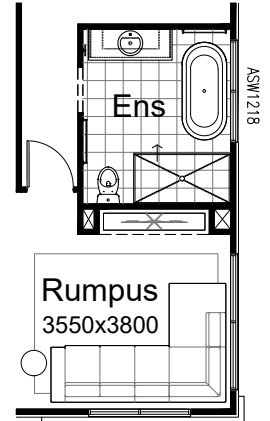
OPTION ENS1

Provide Ensuite upgrade option to Bedroom 1 including relocated WC with nib wall, 1630x900mm tiled shower base.
 Remove 720mm hinged door, ASW1006 and ASW1809 sliding windows and provide ASW1015 sliding window in lieu of standard.



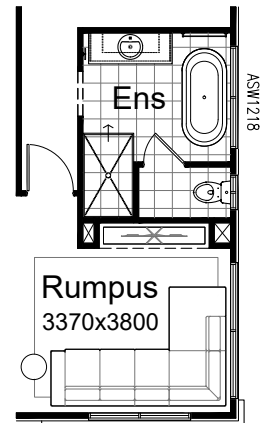
OPTION ENS2

Provide Ensuite upgrade option to Bedroom 1 including rearranged layout with 1720x900mm tiled shower base, 1482mm vanity, freestanding bath and relocated WC.
 Remove ASW1006 and ASW1809 sliding windows and provide ASW1218 window in lieu of standard.
 Option takes 300mm from Rumpus to accommodate.



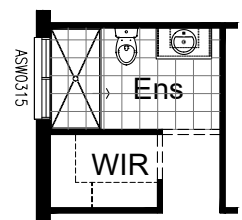
OPTION ENS3

Provide Ensuite upgrade option to Bedroom 1 including rearranged layout with 1500x900mm tiled shower base, 1482mm vanity, freestanding bath and enclosed WC with 720mm hinged door. Remove ASW1809 sliding window and provide ASW1218 window in lieu of standard.
 Option takes 480mm from Rumpus to accommodate.



OPTION ENS4

Provide Ensuite upgrade option to Guest Bedroom including rearranged layout with 1800x900mm tiled shower base in lieu of standard. Remove ASW1809 sliding window and provide ASW0315 window over shower.

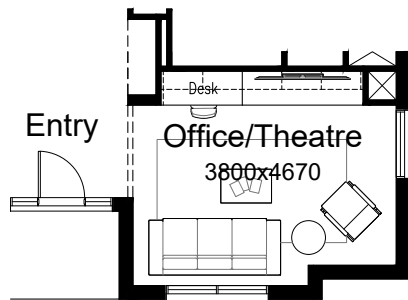


OPTION IP1

Provide Home Office/Theatre option in lieu of Living to the front of the home.

Provide built-in joinery including:

- 600mm deep 32mm thick laminate desk with waterfall end,
 - 1No. 450mm drawer unit below desk,
 - 600mm deep 32mm thick laminate bench top with
 - 3No. 700mm tv unit base cupboards,
 - 4No. 700mm overhead cupboards,
 - 1No. 700mm overhead open shelf unit.
- Alcove to Entry Passage reduced by 190mm to accommodate.



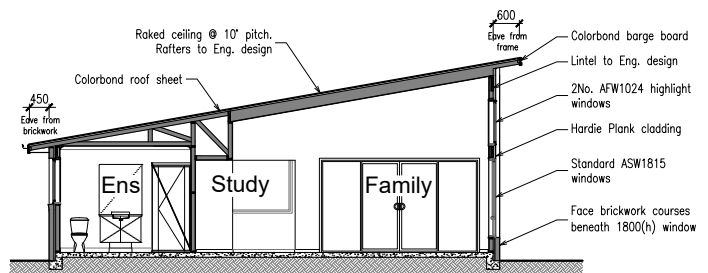
OPTION EP2

Provide raked ceiling option to Family and Alfresco with 2No. AFW1024 fixed highlight windows over standard windows to the Northern elevation.

Option includes skillion roof at 10 degree pitch over rear section of the home with rafters to engineers design with ceiling lining fixed to underside and Colorbond roof sheet over in lieu of tiled roof. Flat ceiling with bulkhead over Meals, Family, Activity, Guest Bed, etc.

See section for details.

Provide Hardie Plank cladding to the rear section of the Northern elevation of the home in lieu of brickwork.

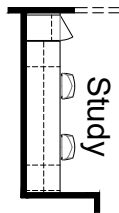


Section - Raked Ceiling

OPTION IP2

Provide built-in joinery upgrade option to ground floor Study including:

- 1No. 600mm deep 32mm thick laminate desk,
- 2No. 450mm drawer units below desk,
- 2No. 450mm open shelf units,
- 2No. 300mm deep 60mm thick open shelves over desk,
- 1No. 450mm full height laminate cupboard with 5No. 450mm shelves,



OPTION IP3

Provide 5th bedroom floor plan option in lieu of Activity including 820mm hinged door, Walk-in Robe with 450mm shelf with hanging rail, and Ensuite including 1800x900mm tiled shower base, WC and 982mm vanity.

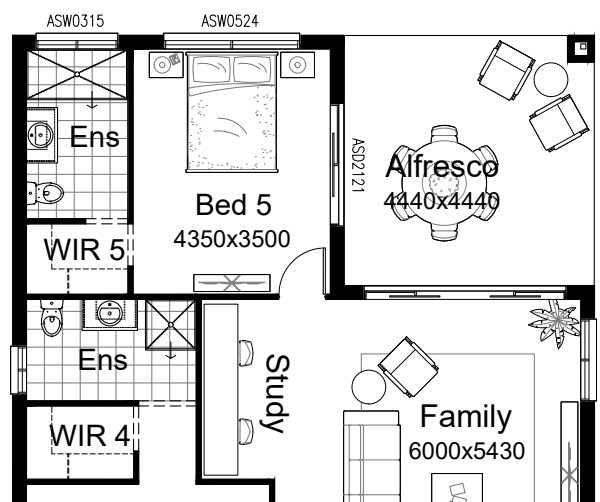
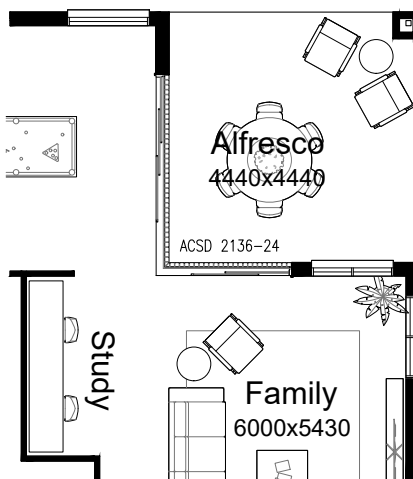
Remove ASDBP2136 bi-parting sliding door and ASW1024 sliding window and provide ASD2121 sliding door, ASW0524 and ASW0315 sliding windows.

OPTION EP1

Provide corner sliding door option to Family, Activity and Alfresco.

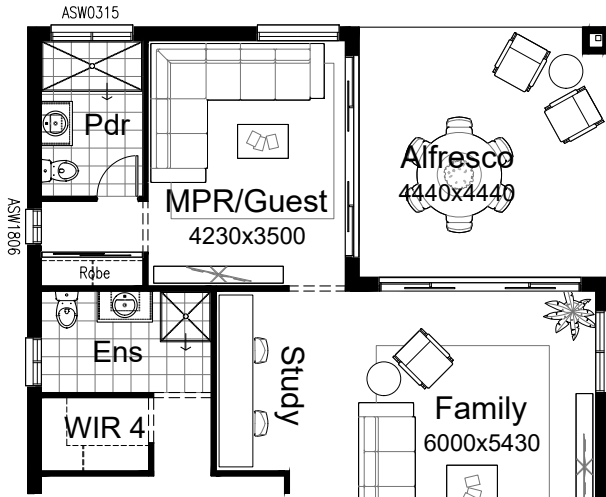
Remove 2No. ASDBP2136 bi-parting sliding doors and provide ACSD2136-24 corner stacker sliding door and ASW1815 sliding window.

Also remove bulkhead between Study nib wall and new Stacker door.



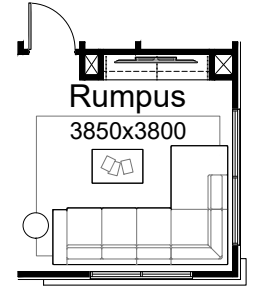
OPTION IP4

Provide MPR/Guest bedroom floor plan option in lieu of Activity including built-in Robe with sliding doors, 450mm shelf with hanging rail, and Powder including 720mm hinged door, 1800x900mm tiled shower base, WC and 782mm vanity. Increase nib wall between Study and Activity by 450mm. Remove ASW1024 sliding window and provide ASW1806 and ASW0315 sliding windows.



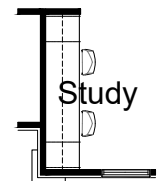
OPTION IP6

Provide built-in joinery upgrade option to first floor Rumpus including:
450mm deep 32mm thick laminate bench top with
2No. 900mm tv unit base cupboards,
2No. 300mm deep 60mm thick open shelves over.



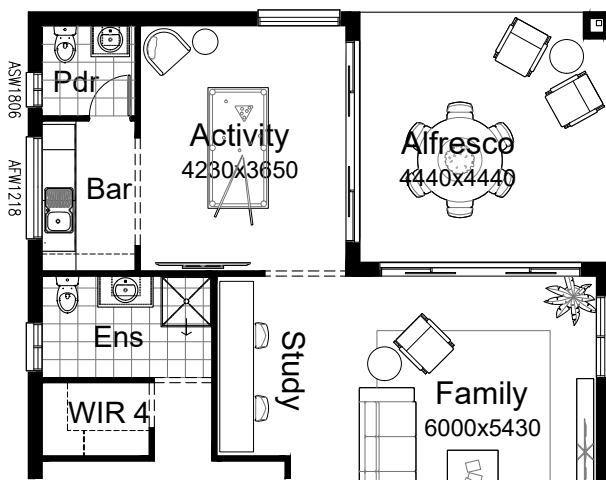
OPTION IP7

Provide built-in joinery upgrade option to first floor Study including:
1No. 600mm deep 32mm thick laminate desk,
2No. 450mm drawer units below desk,
2No. 450mm open shelf units,
2No. 300mm deep 60mm thick open shelves over desk.
Note: option not available with Winchester, Gladstone and Colton facades



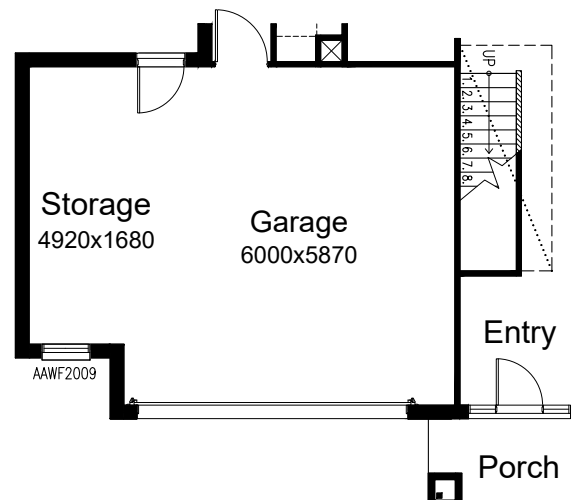
OPTION IP5

Provide Activity floor plan option including Bar and Powder. Powder includes 720mm hinged door, WC and 782mm vanity. Bar includes:
2No. 900mm base cupboards,
1No. 450mm base cupboard,
300mm open shelf units,
single bowl sink and additional bench top and tiled splashback. Remove ASW1024 sliding window and provide ASW1806 sliding window and AFW1218 fixed window.



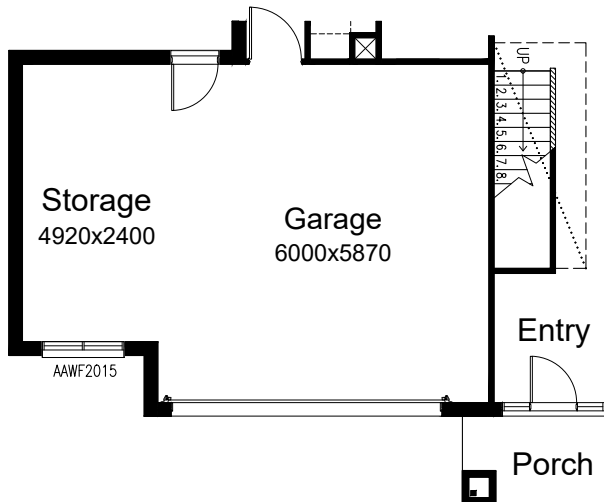
OPTION G1

Provide extension to Garage to create additional Storage area including additional AAWF2009 awning window. Increases width of the home by 1680mm. Increases area of the home by 9.06m².



OPTION G2

Provide extension to Garage to create additional Storage area including additional AAWF2015 awning window.
Increases width of the home by 2400mm.
Increases area of the home by 12.94m².

**OPTION G3**

Provide extension to Garage to create Triple Car Garage including additional 2100x2410 garage door as per colour selection.
Increases width of the home by 3600mm.
Increases area of the home by 23.81m².

