

FLOORPLAN OPTIONS

We personalise our floorplans. Talk to us about our huge range of ready-to-go design options.

Facades available:

Barrine, Mackay	
Lonsdale, Corella	
Overall home width	10.31m
Overall home length	23.87m

Residence	417.4m ²	44.9sq
Garage	36.1m ²	3.9sq
Porch	4m ²	0.4sq
Alfresco	18.1m ²	2sq
Total	475.7m²	51.2sq

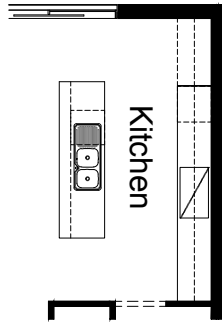
Listed details based on Barrine facade floorplan (illustrated)

*Copyright conditions. All photos and illustrations are representative only. Floor plans and specifications may be varied by Burbank without notice, the dimensions are diagrammatic only and a Building Contract with final drawings will display correct dimensions and detail. All designs are the property of Burbank and must not be used, reproduced, copied or varied, wholly or in part without written permission from an authorised Burbank representative. Copyright Burbank Australia (NSW) Pty Ltd. ABN 88 610 822 770. NSW BL 295627C ACT BL 2016566.

Call 13 BURBANK
Visit burbank.com.au

OPTION K1

Provide Kitchen upgrade with laminated open shelf above refrigerator space, 1no. laminated MW provision with pot drawer below, 2no. 800mm base cupboards, 1no. 600mm pot drawers, 4no. 700mm overhead cupboards. Island bench remains unchanged. Provide additional tiled splash back and bench top to suit.



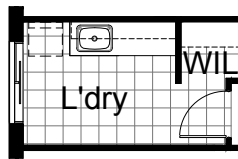
OPTION G1

Provide extension to Garage to create additional Storage area. Provide pitched roof and lightweight cladding (Scyon Stria) above. Increases area by 4.52m². Increases width by 840mm.



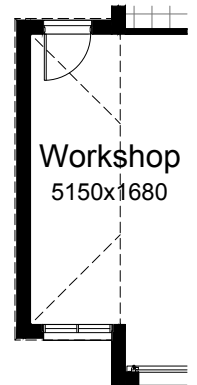
OPTION LD1

Provide Laundry Option with additional inset laminated trough, 2no. 900mm base cupboards, 2no. 900mm overhead cupboards and additional tiled splash back and bench top to suit.



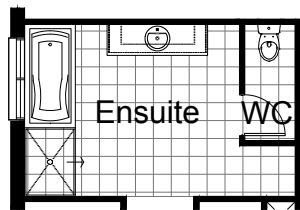
OPTION G2

Provide extension to Garage to create Workshop area including additional window to suit. Provide pitched roof and lightweight cladding (Scyon Stria) above. Increases area by 9.45m². Increases width by 1680mm.



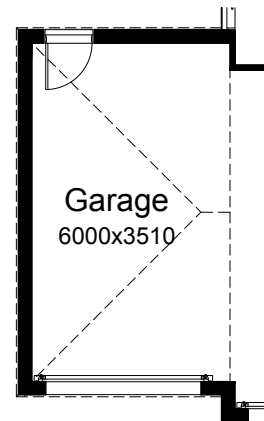
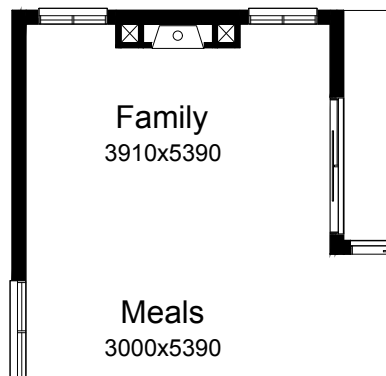
OPTION ENS1

Provide Ensuite upgrade with additional 1200mm x 900mm tiled shower base in lieu of standard.



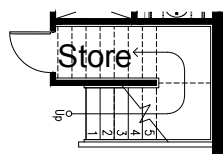
OPTION IP1

Provide Jetmaster SL-350 gas fireplace, 400mm off floor level in a 1400mm x 420mm boxed out plaster wall with a 4 sided black fascia to Family room rear wall. Relocate Plumbing stack, void and 2no. Family windows to suit.



OPTION IP2

Provide Store to under side of staircase with additional 1no. 720mm flush panel hinged door.

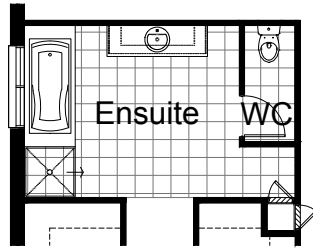
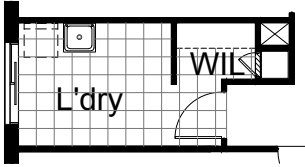


OPTION G3

Provide triple car Garage with pitched roof and lightweight cladding (Scyon Stria) above including additional Garage door as per colour selection. Increases width by 3600mm. Increases area by 23.29m².

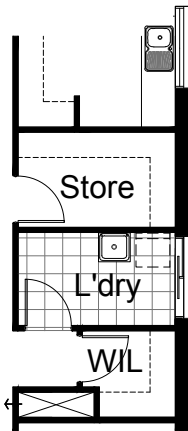
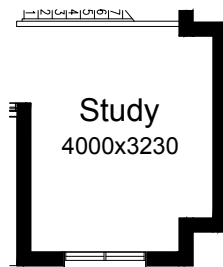
OPTION IP3

Provide Laundry Chute.



OPTION IP4

Provide Study option by extending Study wall width by 600mm with brick parapet flat roof above. Increases area by 2.22m². Increases width by 600mm.



OPTION IP5

Provide Guest Bedroom option in lieu of Gym including additional 2no. 820mm flush panel hinged doors and plaster lined robe with 1no. hanging rail and shelf in lieu of WIR. Relocate Laundry and WIL with Powder and provide additional 1no. 900mm x 900mm polymarble shower base, 1no. 1027mm x 610mm aluminium sliding window in lieu of standard 1no. 1800mm x 850mm and provide additional 1no. 720mm cavity sliding door. Decrease Store room length by 240mm, relocate Linen cupboard to suit and provide 1no. 820mm flush panel hinged door to WIL with additional shelving to suit.