

Facades available:

Callington, Harrogate, Kent	
Lancaster, Sheffield, Swansea	
Wiltshire, Eastwood	
Overall home width	8.63m
Overall home length	18.83m

Residence	114.3m ²	12.3sq
Garage	23.7m ²	2.6sq
Porch	3.6m ²	0.4sq
Total	142.0m²	15.2sq

Listed details based on Sheffield facade floorplan (illustrated)

FLOORPLAN OPTIONS

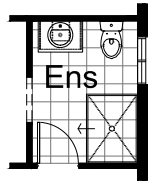
We personalise our floorplans. Talk to us about our huge range of ready-to-go design options or simply visit www.burbank.com.au/south-australia for more details.

*Copyright conditions. All photos and illustrations are representative only. Floor plans and specifications may be varied by Burbank without notice, the dimensions are diagrammatic only and a Building Contract with final drawings will display correct dimensions and detail. All designs are the property of Burbank and must not be used, reproduced, copied or varied, wholly or in part without written permission from an authorised Burbank representative. Copyright Burbank Australia (SA) Pty Ltd. ABN 96 165 533 406. BLD 266709.

Call 13 BURBANK
Visit burbank.com.au

OPTION ENS1

Provide Ensuite upgrade including 1200mm x 900mm tiled shower base with relocation of vanity and window.



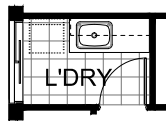
OPTION G1

Provide extension to Garage to create additional Storage area. Increases area by 4.58m². Increases width by 850mm.



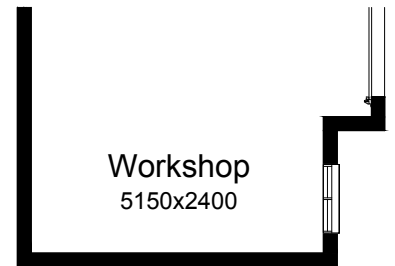
OPTION LD1

Provide Laundry upgrade with laminated insert trough, 1no. 900mm base cupboard, 1no. 450mm base cupboard, 1no. 900mm overhead cupboard, 1no. 450mm overhead cupboard with additional tiled splash back and bench top to suit.



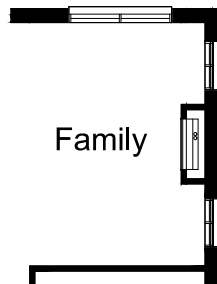
OPTION G2

Provide extension to Garage to create Workshop area including additional window to suit. Increases width by 2400mm. Increases area by 13.51m².



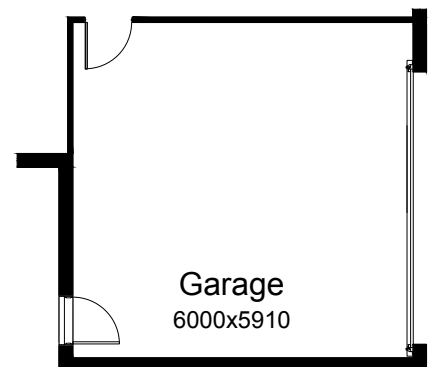
OPTION IP1

Provide Real Flame Inspire 900 gas fireplace, 400mm off floor level in a 1400mm x 420mm boxed out plaster wall with a 4 sided black fascia to Family room side wall. Provide 2no. 1809 ASW to Family side wall.



OPTION G3

Provide double car Garage including larger roller door to front. Increases width by 2400mm. Increases area by 15.53m².



OPTION EP1

Provide Alfresco option with 2124 ASD and 2no. brick piers and earth floor to Alfresco. Increases area by 13.50m². Increases width by 3000mm.

