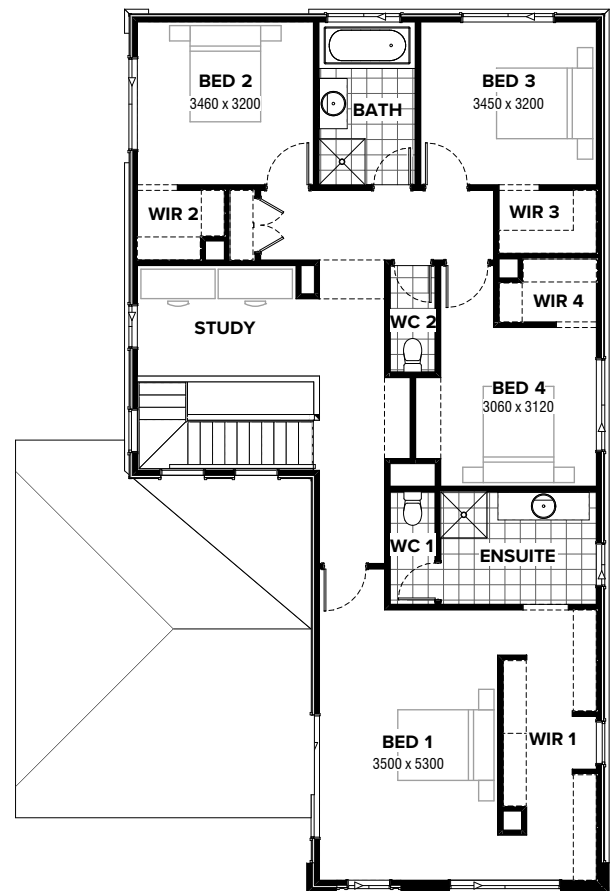


GROUND FLOOR



FIRST FLOOR

FLOORPLAN OPTIONS

We personalise our floorplans. Talk to us about our huge range of ready-to-go design options.

Facades available:

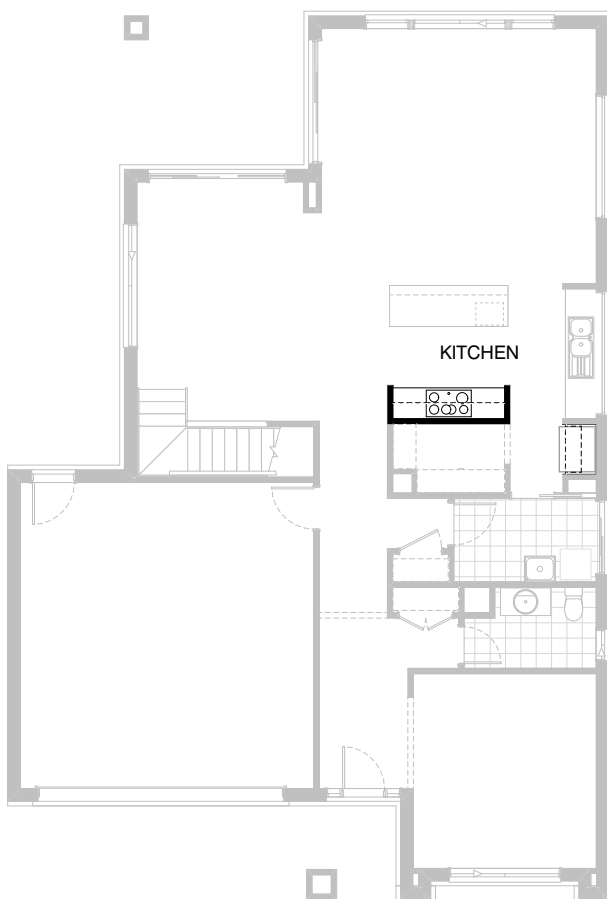
Bradshaw, Bradbury, Kingsley,
Kingston, Nouveau, Traditional,
Urban

Overall home width 11.75m

Overall home length 17.27m

Residence	283.2m ²	30.5sq
Garage	37.9m ²	4.1sq
Porch	3.5m ²	0.4sq
Alfresco	10.8m ²	1.2sq
Total	297.5m²	32.0sq

Listed details based on Traditional facade floorplan (illustrated)



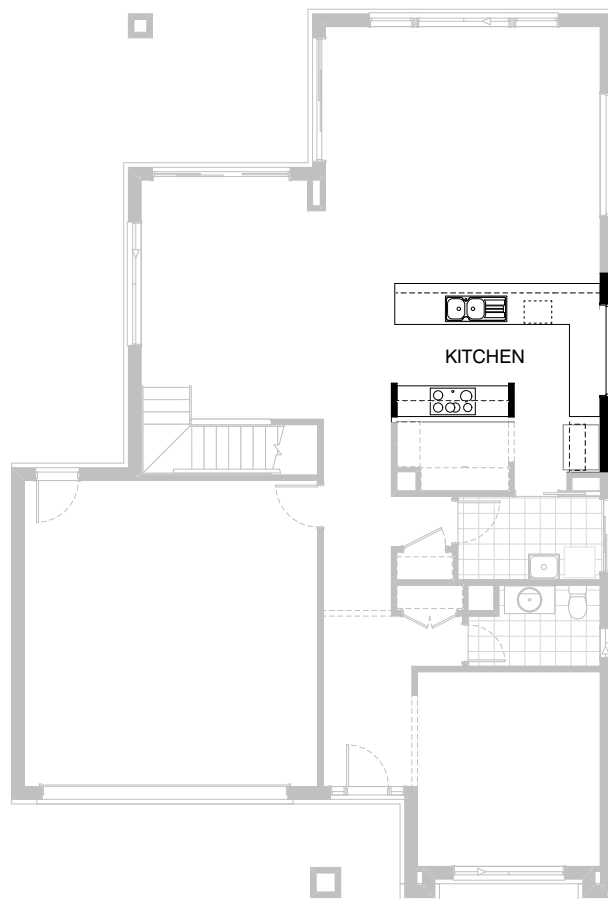
Option Kitchen01

Provide Kitchen upgrade option which adds
 2No. 600mm overhead cupboards and
 1No. 900mm open shelf above Ref space.
 Island bench and sink bench unchanged.



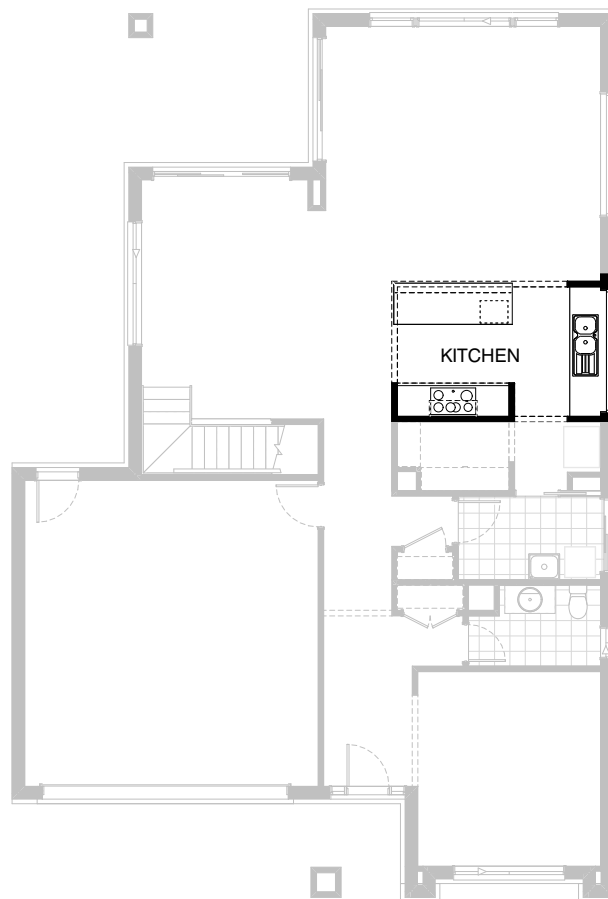
Option Kitchen02

Provide Butler's Pantry upgrade option which adds
 2No. 800mm base cupboards,
 1No. single bowl sink with drainer,
 additional tiled splashback and benchtop to suit.
 This option decreases the Family by 140mm in width and
 increases the void space near the fridge by 140mm.



Option Kitchen03

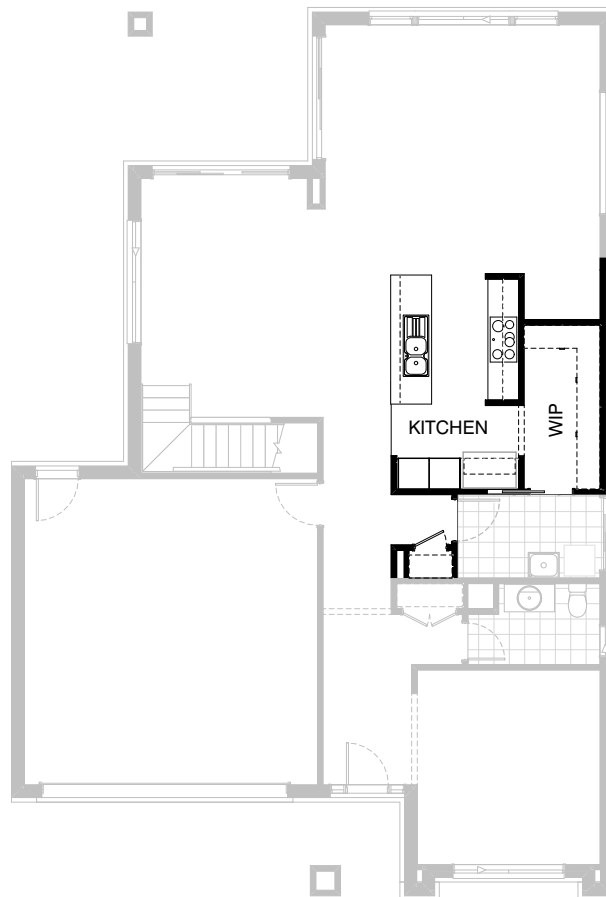
Provide L-shaped Kitchen upgrade option which adds
 2No. 600mm overhead cupboards and
 1No. 900mm open shelf above Ref space.
 L-shaped bench includes
 1No. 450mm drawer unit,
 1No. 450mm base cupboard,
 1No. 900mm base cupboard,
 1No. dishwasher provision,
 1No. microwave provision with pot drawer,
 1No. 900mm corner base cupboard,
 2No. 700mm base cupboards with
 additional benchtop and tiled splashback to suit.
 Option also provides AFW1218 in lieu of standard.



Option Kitchen04

Provide Kitchen bulkhead and timber ceiling upgrade option.

Option Kitchen04 only available with Standard Kitchen, Option Kitchen01 and Option Kitchen03



Option Kitchen05

Provide Kitchen upgrade option with rearranged layout including

- 2No. 700mm base cupboards,
- 1No. 900mm base cupboard,
- 2No. 700mm overhead cupboards with additional benchtop and tiled splashback to suit.
- 1No. 1000mm open shelf above Ref space and
- 2No. oven towers with 600mm ovens and microwave provisions.

Island bench includes

- 1No. 450mm drawer unit,
- 1No. dishwasher provision,
- 1No. 900mm base cupboard and
- 1No. 450mm base cupboard.

Option also provides a study Nook area, decreases the Family by 120mm in width and deletes existing window to Kitchen.

Provide relocated plumbing stack to Linen closet as shown and provide 620mm hinged door in lieu of standard.



Option Kitchen06

Provide Kitchen upgrade option with rearranged layout including

- 2No. 700mm base cupboards,
- 1No. 900mm base cupboard,
- 2No. 700mm overhead cupboards with additional benchtop and tiled splashback to suit.
- 1No. 1000mm open shelf above Ref space and
- 2No. oven towers with 600mm ovens and microwave provisions.

Island bench includes

- 1No. 450mm drawer unit, 1No. dishwasher provision,
- 1No. 900mm base cupboard and 1No. 450mm base cupboard.

Butlers Pantry includes

- 2No. 900mm base cupboards,
- 1No. 800mm base cupboard,
- 2No. 900mm overhead cupboards,
- 1No. 800mm overhead cupboard,
- 1No. single bowl sink with drainer,
- additional tiled splashback and benchtop to suit.

Option also provides a study Nook area, AFW 514 x 2410 in lieu of standard, decreases the Family by 120mm in width and deletes cavity sliding door to WIP / Laundry.

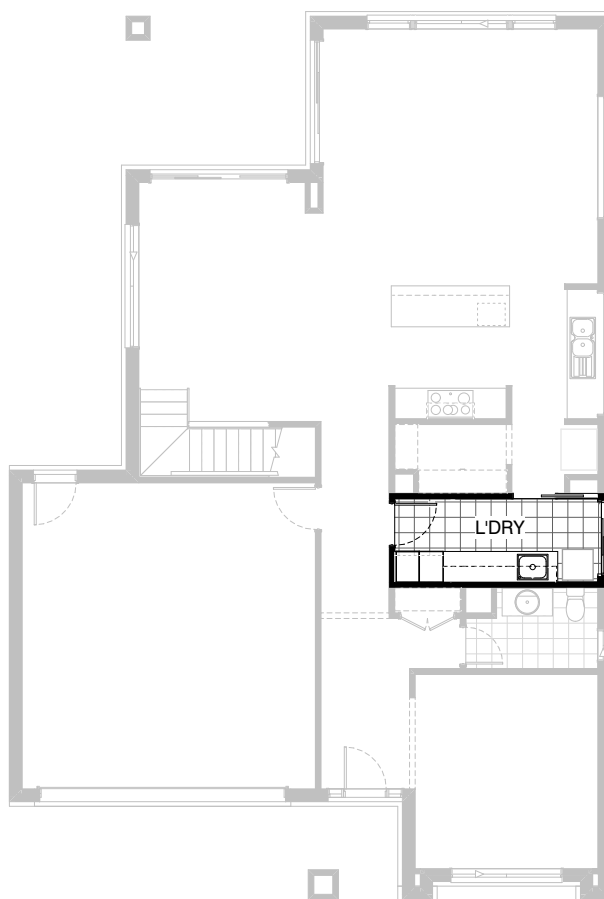
Provide relocated plumbing stack to Linen closet as shown and provide 620mm hinged door in lieu of standard.


4

2.5

2

+ study

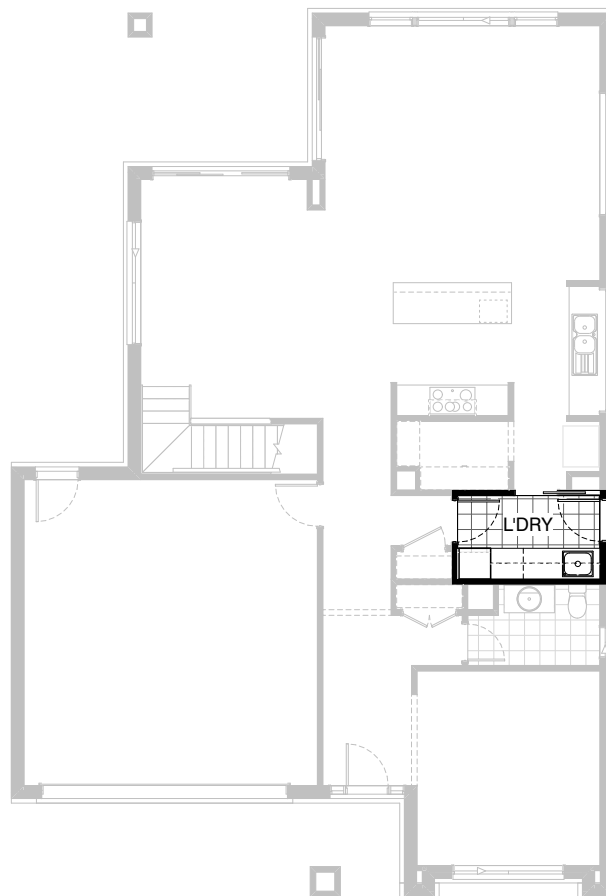

2


Option Laundry01

Provide Laundry upgrade option including laminate cupboards and stainless steel inset trough including

- 2No. 900mm base cupboards,
- 1No. 400mm base cupboard,
- 2No. 900mm overhead cupboards,
- 1No. 400mm overhead cupboard,
- 1No. 450mm full height laminate Linen cupboard,
- 1No. 450mm full height laminate Broom cupboard,

additional benchtop and tiled splashback to suit.
 Extend Laundry by deleting Linen Cupboard from Passage.



Option Laundry02

Provide Laundry upgrade option including laminate cupboards and stainless steel inset trough including

1No. 800mm base cupboard,

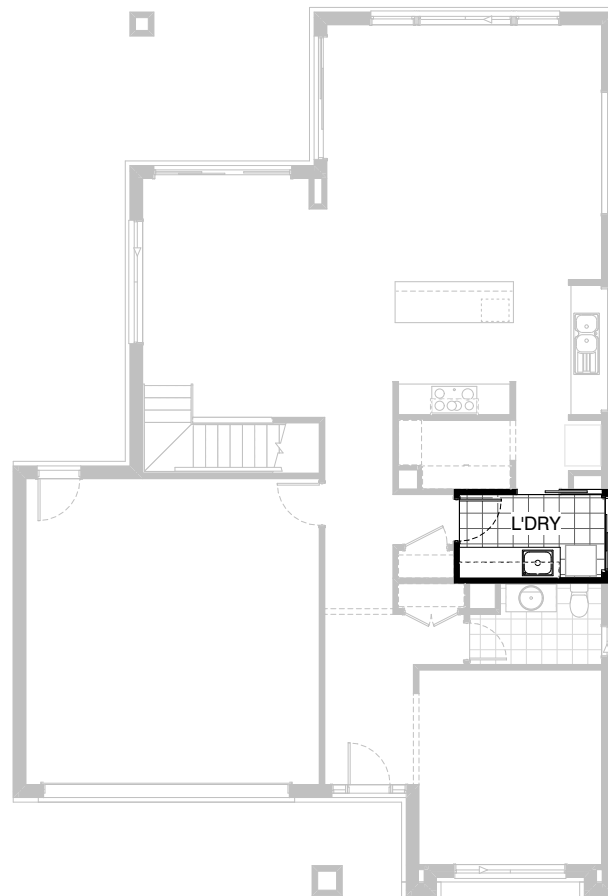
2No. 800mm overhead cupboards,

1No. 450mm overhead cupboard,

1No. 600mm full height laminate Linen cupboard, additional benchtop and tiled splashback to suit.

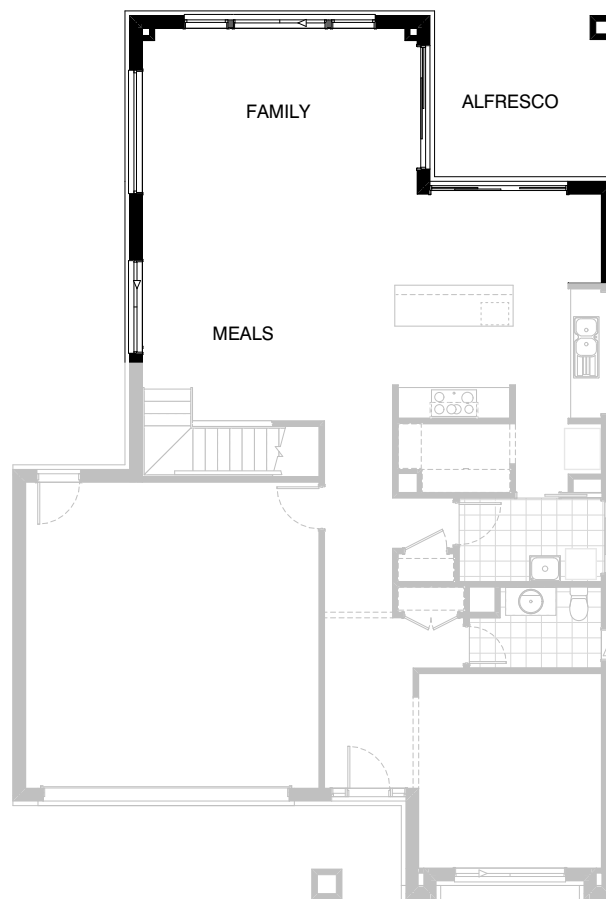
Option also provides AED2108 external access door in lieu of ASD2115 sliding door.

Increase kicker height of base cabinets by 50mm to increase the overall height of the benchtop to 955mm to accommodate washing machine and dryer beneath side-by-side.



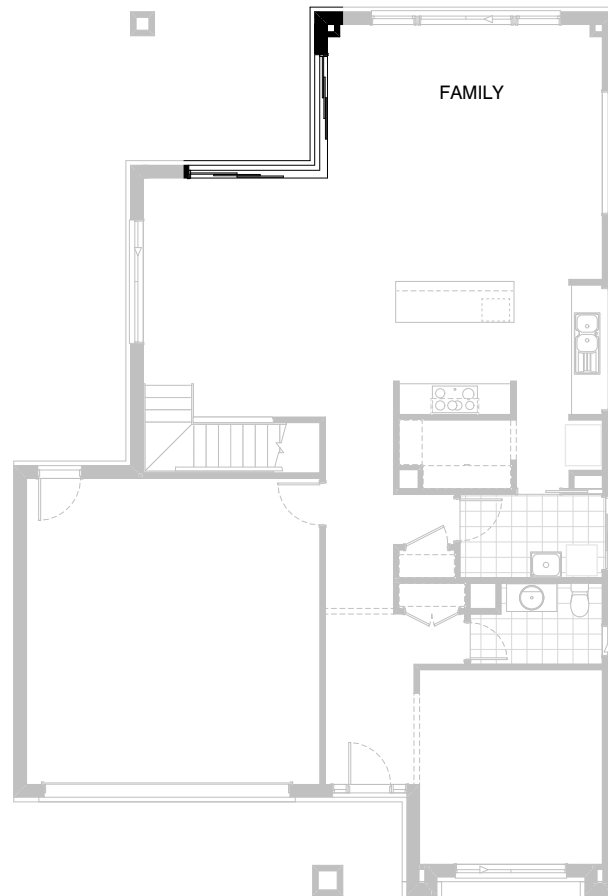
Option Laundry03

Provide Laundry upgrade option including laminate cupboards and stainless steel inset trough including
 2No. 800mm base cupboards,
 2No. 800mm overhead cupboards,
 1No. 300mm base cupboard,
 1No. 300mm overhead cupboard,
 additional benchtop and tiled splashback to suit.



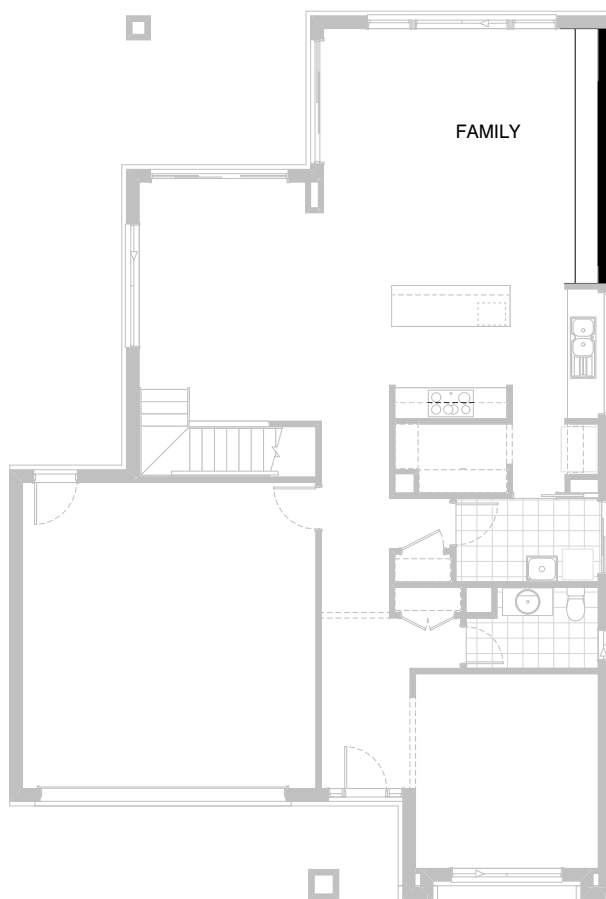
Option External01

Provide mirrored Family and Alfresco option.
 This option increases Alfresco by 240mm in depth.
 Relocate plumbing stack as shown and provide
 matching void to other side of Family.



Option External03

Provide ACSD2124-27 corner sliding door in lieu of ASD2124 and ASD2127.
 Relocate plumbing stack as shown and provide matching void to other side of Family.



Option Internal01

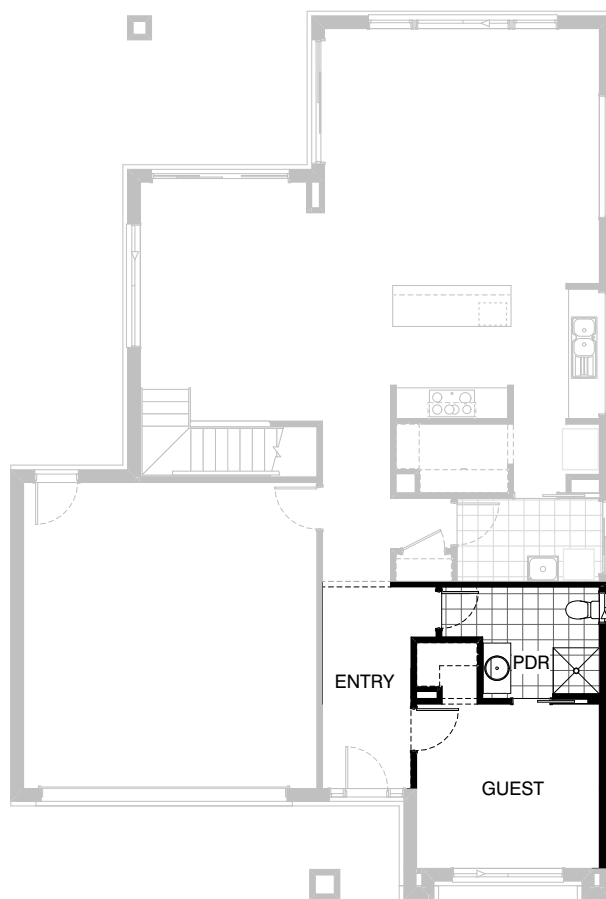
Provide built-in joinery upgrade option to Family with 450mm deep 32mm thick laminate benchtop, 4No. 1000mm T.V cabinets and 1No. 900mm T.V cabinet ASW0524 sliding window removed.

Option IP1 only available with standard Kitchen and Option K1



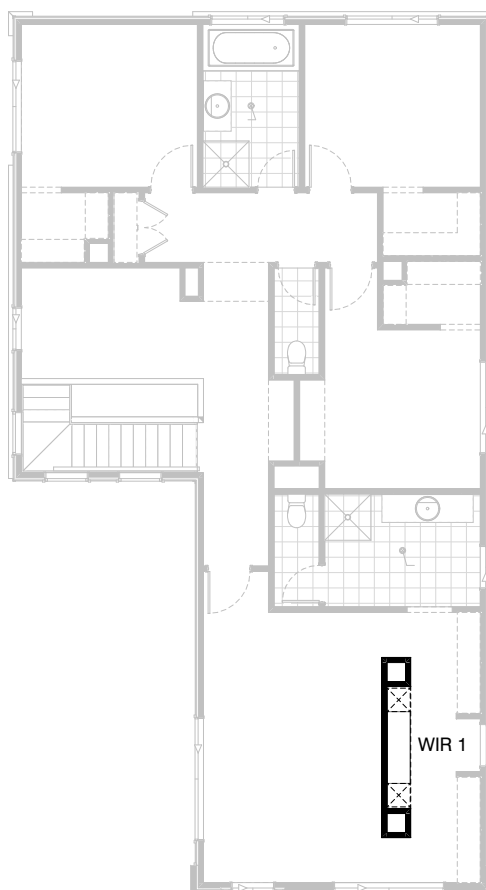
Option Internal02

Provide Theatre in lieu of Living including
 2No. 720mm wide cavity sliding doors
 in lieu of bulkhead opening
 600mm deep 32mm thick laminate benchtop
 2No. 450mm full height laminate cupboards
 3No. 700mm T.V cabinets
 3No. 700mm overhead cupboards with lift-out doors Type 3



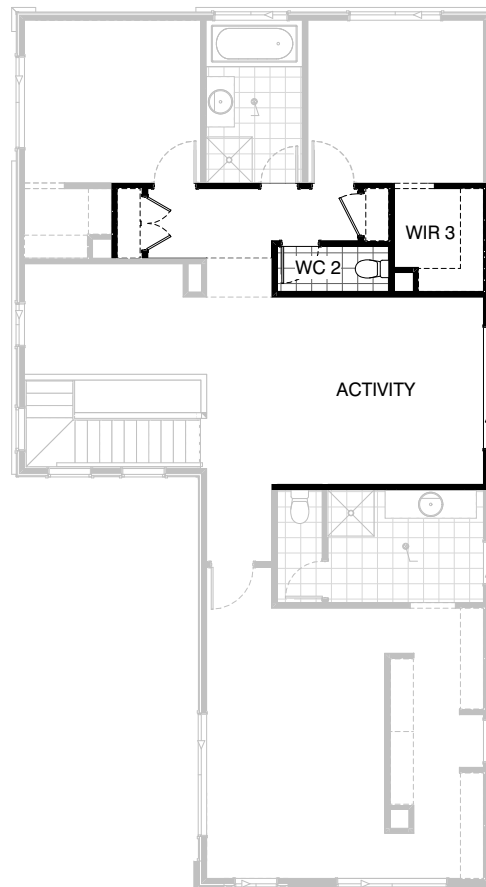
Option Internal03

Provide Guest Bed option with 2-way Pdr / Ensuite in lieu of Living.
 Option includes 820mm hinged door in lieu of bulkhead opening and built-in WIR with bulkhead opening.
 Rearrange Pdr to accommodate additional 900x900mm tiled shower base, double stud wall and 720mm cavity sliding door to Pdr / Ensuite.
 Coats to Entry passage to be deleted.
 Provide ASW 1027 x 610 in lieu of standard.



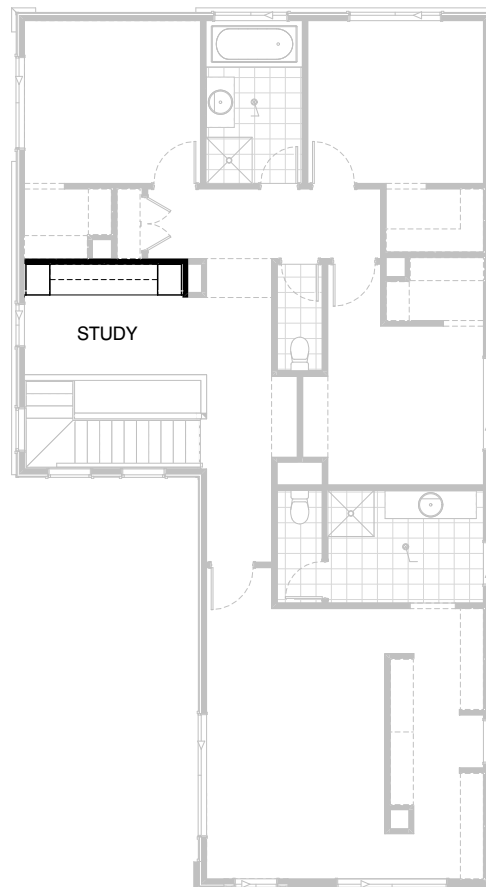
Option Internal04

Provide built-in joinery upgrade option to WIR 1 with 450mm deep 32mm laminate benchtop and plaster lined bulkhead above including 2No. 458mm open shelf and drawer units.



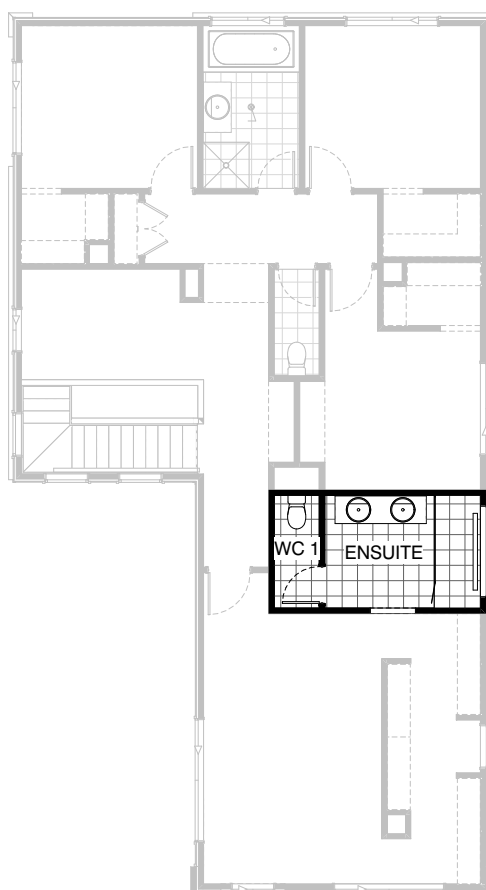
Option Internal05

Provide floor plan option providing Activity to first floor in lieu Bed 4.
 Relocate WC and increase size of Bed 3
 WIR to accommodate.
 Provide ASW1024 sliding window in lieu of standard.



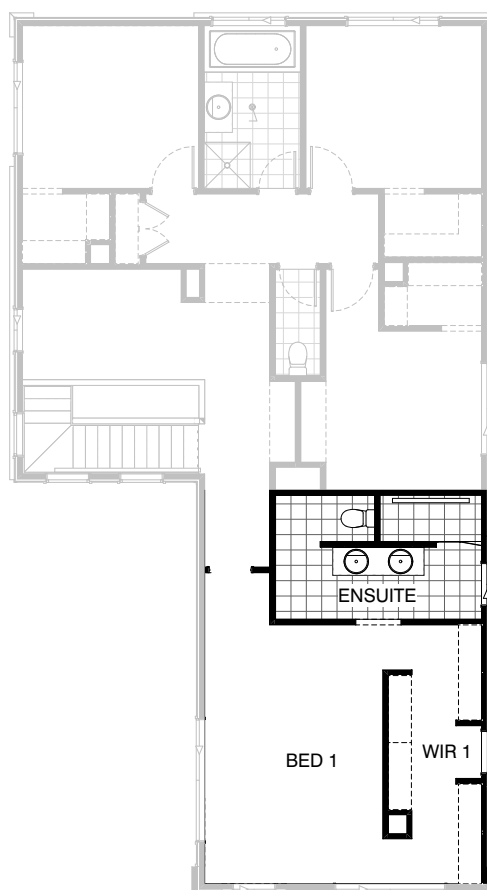
Option Internal06

Provide built-in joinery upgrade option to Study with
 600mm deep 32mm laminate benchtop
 2No. 450mm full height laminated cupboards
 2No. 300mm deep 60mm thick open shelves over



Option Ensuite01

Provide Ensuite upgrade option with rearranged layout including 2200 x 900 wall to wall tiled shower base with grate drain in lieu of standard, 1No. 1782mm wide vanity unit with 2No. basins in lieu of standard and AFW 300 x 1810 in lieu of standard.



Option Ensuite02

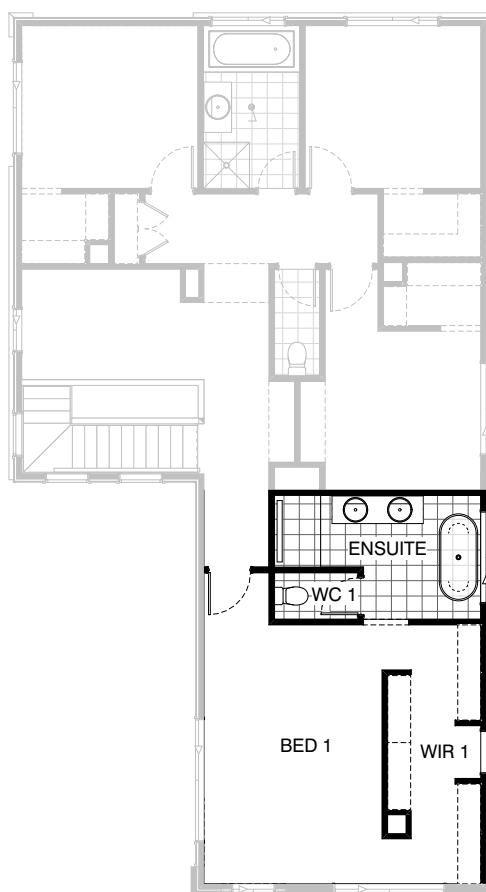
Provide Ensuite upgrade option with rearranged layout including 1980 x 900mm wall to wall tiled shower base with grate drain in lieu of standard, 1No. 1782mm wide vanity unit with 2No. basins in lieu of standard and relocated WC behind wall. Option takes 220mm of depth from Bed 1 and WIR to accommodate.


4

2.5

2

+ study


2


Option Ensuite03

Provide Ensuite upgrade option with rearranged layout including 1400 x 900mm wall to wall tiled shower base with grate drain in lieu of standard, 1No. 1782mm wide vanity unit with 2No. basins in lieu of standard, freestanding bath and ASW1200 x 1810 in lieu of standard. Option takes 220mm of depth from Bed 1 and WIR to accommodate.