

FLOORPLAN OPTIONS

We personalise our floorplans. Talk to us about our huge range of ready-to-go design options or simply visit www.burbank.com.au/south-australia for more details.

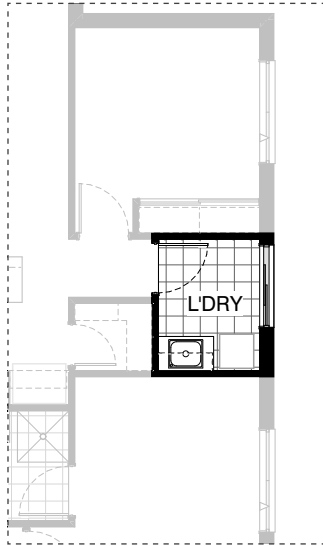
Listed details based on Sheffield facade floorplan (illustrated)

Facades available:

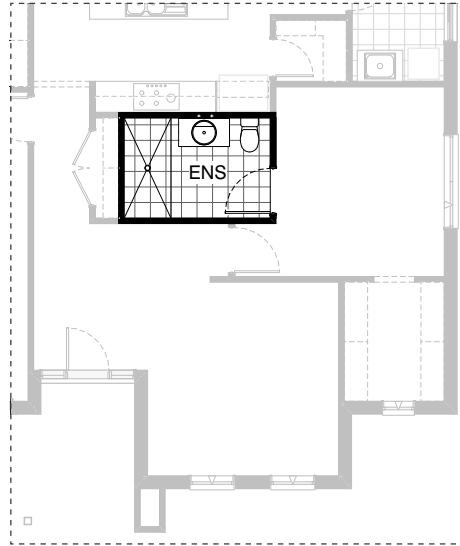
Sheffield, Aster, Eastwood,	
Hartford, Lancaster, Leawood,	
Newbury, Wiltshire	
Overall home width	14.03m
Overall home length	18.83m

Residence	173.4m ²	18.7sq
Garage	36.3m ²	3.9sq
Porch	6.8m ²	0.7sq
Alfresco	12.9m ²	1.4sq
Total	229.4m²	24.7sq

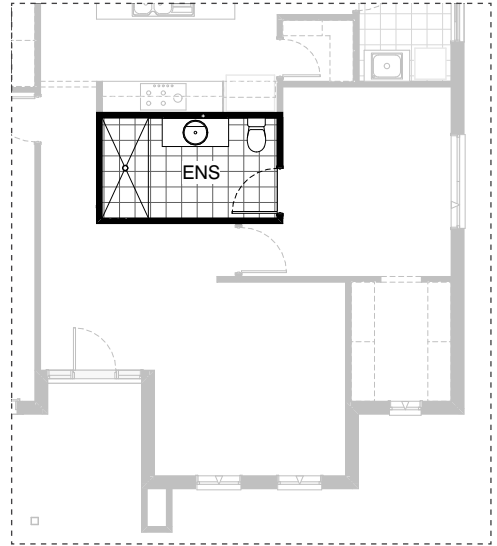
*Copyright conditions. All photos and illustrations are representative only. Floor plans and specifications may be varied by Burbank without notice, the dimensions are diagrammatic only and a Building Contract with final drawings will display correct dimensions and detail. All designs are the property of Burbank and must not be used, reproduced, copied or varied, wholly or in part without written permission from an authorised Burbank representative. Copyright Burbank Australia (SA) Pty Ltd. ABN 96 165 533 406. BLD 266709.



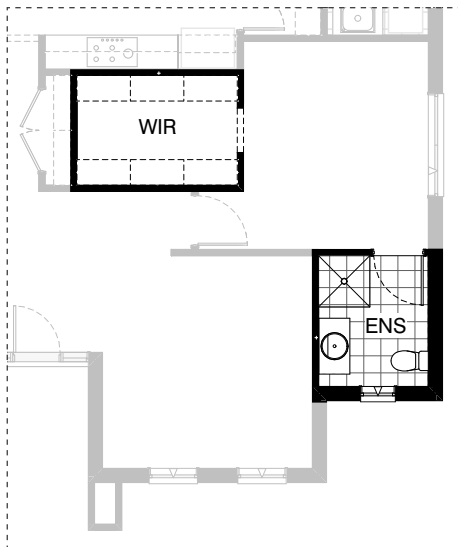
L01



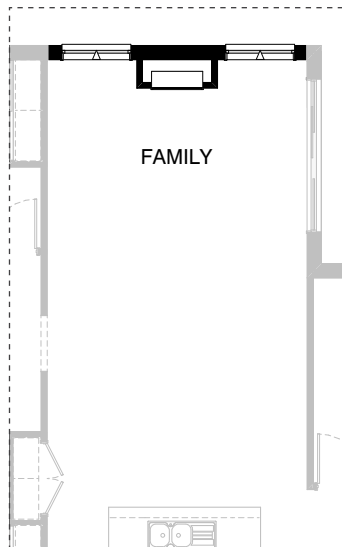
EN01



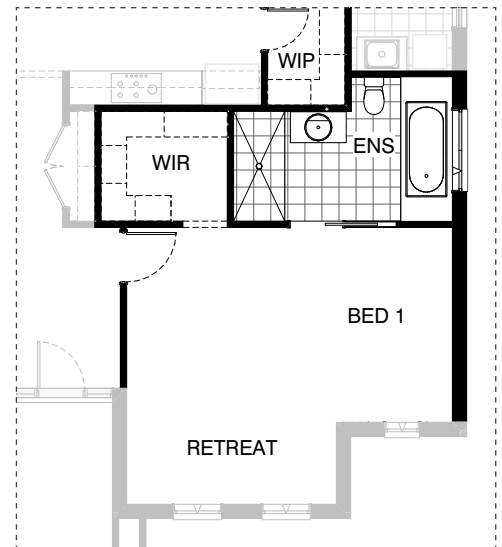
EN02



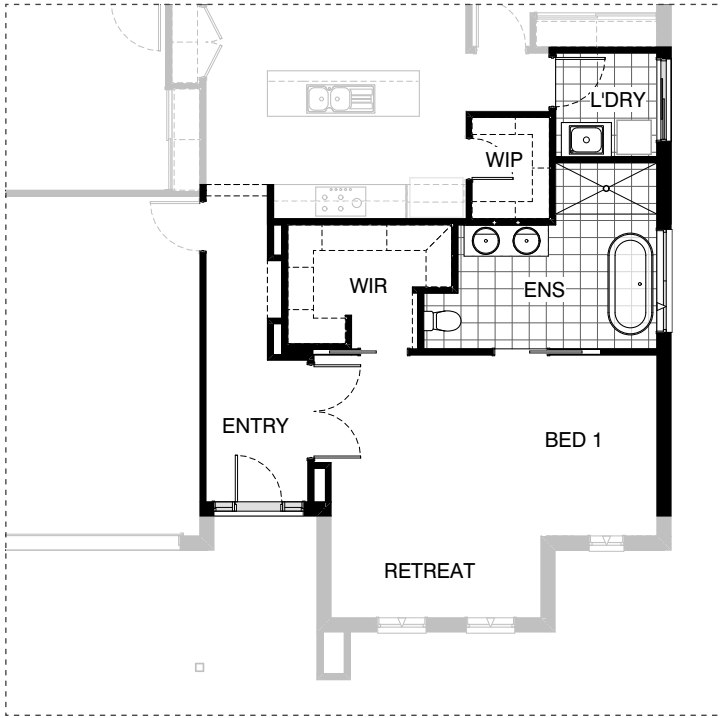
IN01



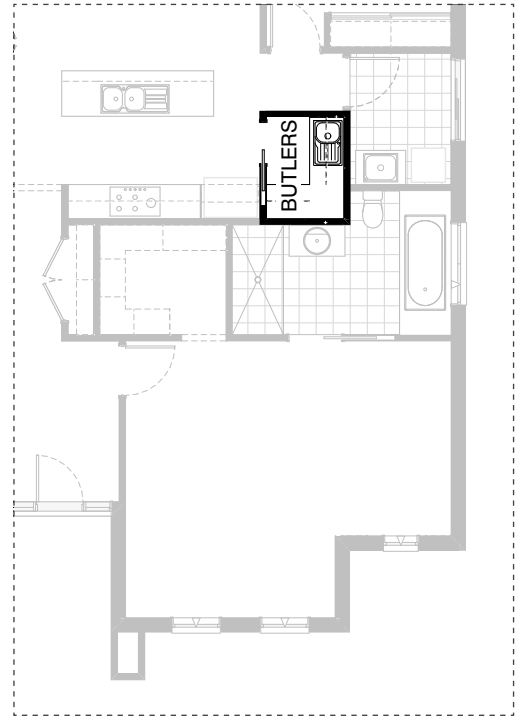
IN02



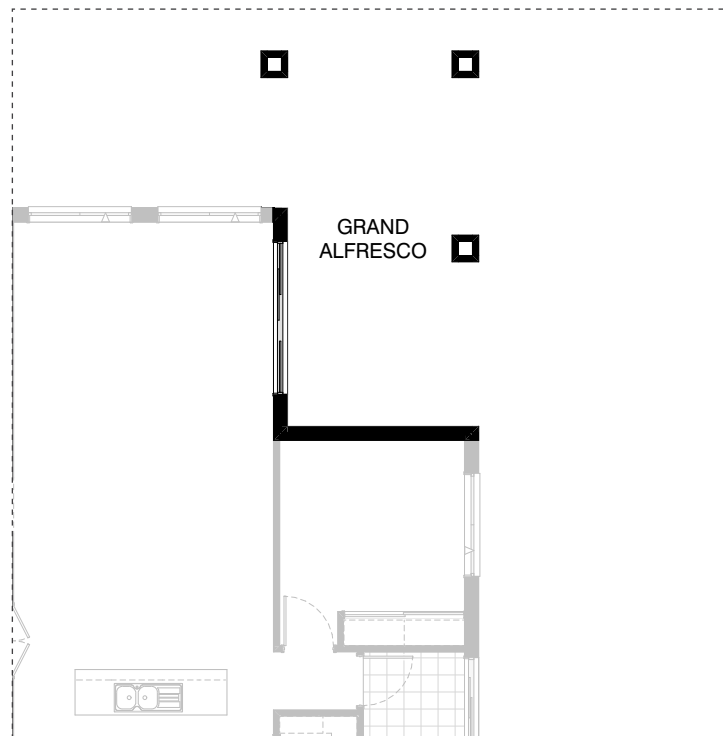
IN03



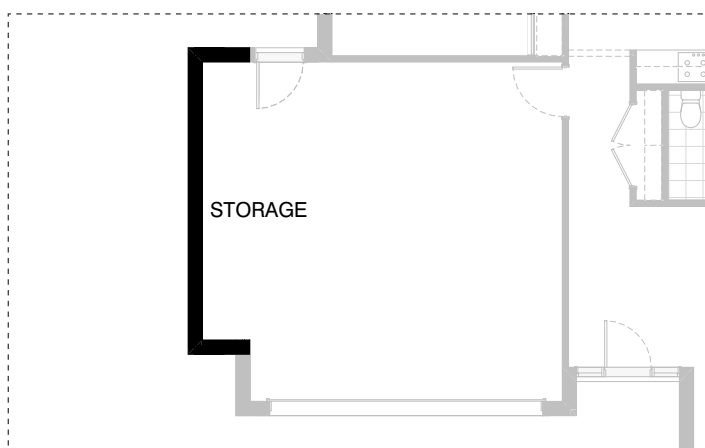
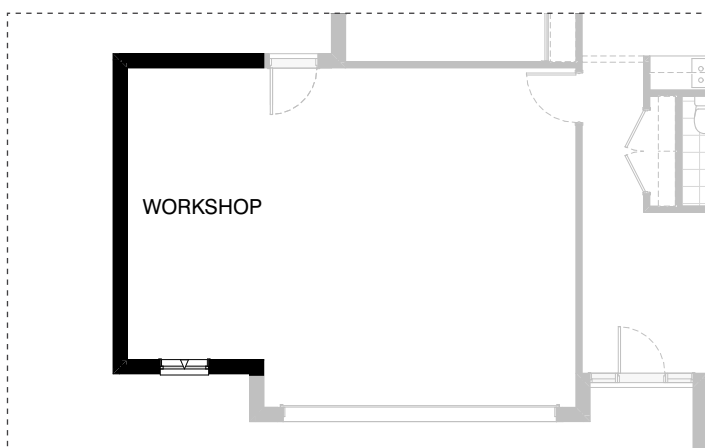
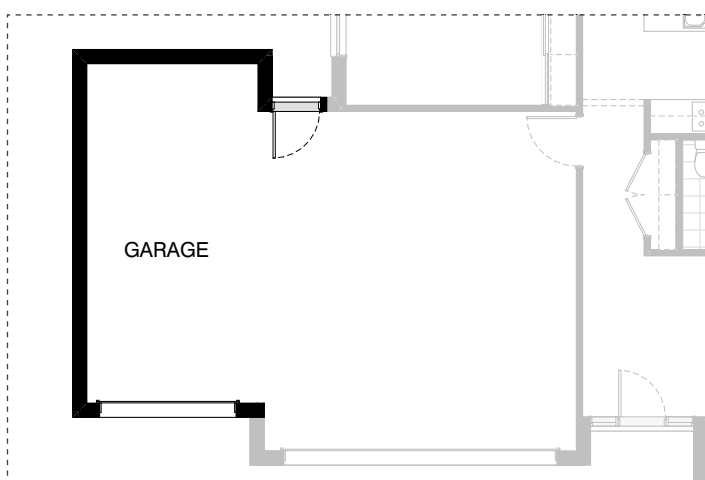
IN04



IN05



IN06

**G01****G02****G03**

OPTION DESCRIPTIONS**L01 - Laundry Option 01**

Provide Laundry upgrade including:
laminated inset trough,
1No. 900mm base cupboard,
1No. 900mm overhead cupboard,
additional tiled splashback and benchtop to suit.

EN01 - Ensuite Option 01

Provide Ensuite upgrade with
900mm x 1930mm wall to wall tiled shower base
in lieu of standard.

EN02 - Ensuite Option 02

Provide Ensuite upgrade by deleting Linen cupboard including
2No. 720mm flush panel hinged doors and 300mm deep shelves.
Extend Ensuite width by 560mm.
Provide 900mm x 1930mm wall to wall tiled shower base
in lieu of standard and
1No. 1282mm wide vanity basin in lieu of standard.

IN01 - Internal Option 01

Relocate Ensuite with WIR.

IN02 - Internal Option 02

Provide Real Flame Inspire 900 gas fireplace,
400mm off floor level in a 1400mm x 500mm
boxed out plaster wall with, 4 sided black fascia
to Family room rear wall with capped gas point.
Provide 2No. 2057mm x 1210mm
aluminium awning windows in lieu of standard.

IN03 - Internal Option 03

Delete Lounge and relocate Bed 1, WIR and Ensuite.
Increase WIP by 600mm with 450mm shelves,
Provide 1No. 920mm cavity sliding door to Ensuite and
delete 870mm hinged door.
Relocate 870mm hinged door to Bed 1.
Provide 1675mm bathhob and 1930mm x 900mm tiled shower to Ensuite.
Provide 1200mm x 1450mm aluminium awning window to Ensuite
in lieu of standard.

IN04 - Internal Option 04

Delete Lounge and relocate Bed 1, WIR and Ensuite.
Delete Linen in Entry passage and provide Nook with bulkhead.
Increase WIP by 600mm with 300mm shelves.
Decrease Laundry by 490mm to wall behind trough
Provide 1780mm x 900mm tiled shower to Ensuite.
Provide Nook to WIR with bulkhead.
Provide 1No. 920mm cavity sliding door to Ensuite in lieu of standard.
Provide 1No. 820mm cavity sliding door to WIR in lieu of standard.
Provide double 820mm hinged doors to Bed 1 in lieu of standard.
Provide 1780mm freestanding bath,
Provide 1482mm vanity with double basins in lieu of standard.
Provide 1200mm x 1810mm aluminium awning window to Ensuite in lieu of
standard.
Provide 1570mm wide front Entry door in lieu of 1810mm wide.

IN05 - Internal Option 05

Provide Butlers Pantry in lieu of standard Walk-In-Pantry including:
1No. 720mm cavity sliding door in lieu of 720mm hinged door,
1No. single bowl sink.
1No. 800mm blind base cupboard with 350mm door,
1No. 700mm base cupboard,
1No. 700mm overhead cupboard,
1No. 800mm base cupboard,
1No. 800mm overhead cupboard,
1No. 350mm overhead cupboard,
1No. 600mm overhead corner cupboard,
additional benchtop and tiled splashback to suit.

Note:

This option only available with Internal03 & Internal04.

EX01 - External Option 01

Provide Grand Alfresco option to rear of Family including:
Additional 2No. 470mm x 470mm brick piers and
earth floor to Alfresco.
Increase length by 2760mm.
Increase area by 10.57m².

G01 - Garage Option 01

Provide extension to Garage to
create additional Storage area.
Increases width by 840mm.
Increases area by 4.53m².

G02 - Garage Option 02

Provide extension to Garage to create
Workshop area including:
1No. 1800mm x 850mm aluminium awning
feature window to suit.
Increases width by 2400mm.
Increases area by 13.51m².

G03 - Garage Option 03

Provide triple car Garage including
1No. additional 2140mm x 2410mm
Garage door as per colour selection.
Increases width by 3120mm.
Increases area by 20.51m².