



<b>Facades available:</b>	
Coastal, Delta, Kingston, Nouveau	
Salisbury, Traditional, York	
<b>Overall home width</b>	<b>12.83m</b>
<b>Overall home length</b>	<b>26.87m</b>

Residence	207.9m <sup>2</sup>	22.4sq
Garage	39.8m <sup>2</sup>	4.3sq
Porch	5.4m <sup>2</sup>	0.6sq
Alfresco	18.0m <sup>2</sup>	1.9sq
<b>Total</b>	<b>271.0m<sup>2</sup></b>	<b>29.2sq</b>

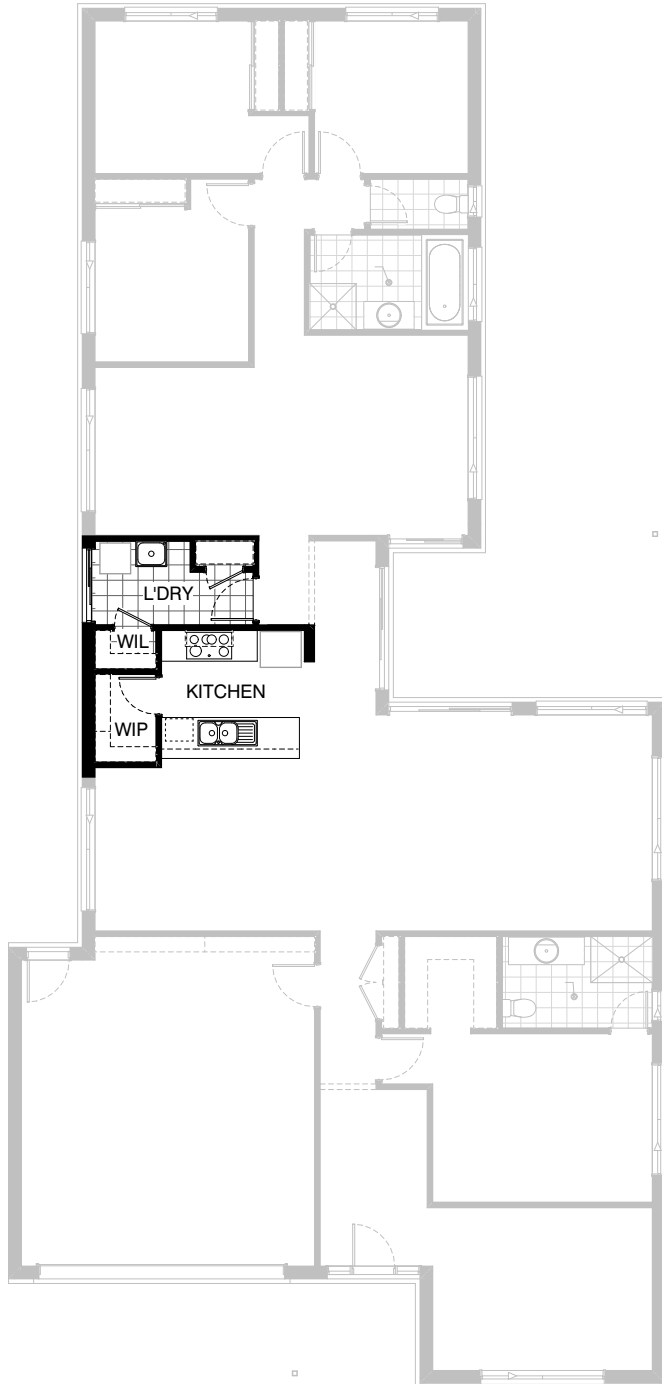
**FLOORPLAN OPTIONS**

We personalise our floorplans. Talk to us about our huge range of ready-to-go design options.

Listed details based on Traditional facade floorplan (illustrated)

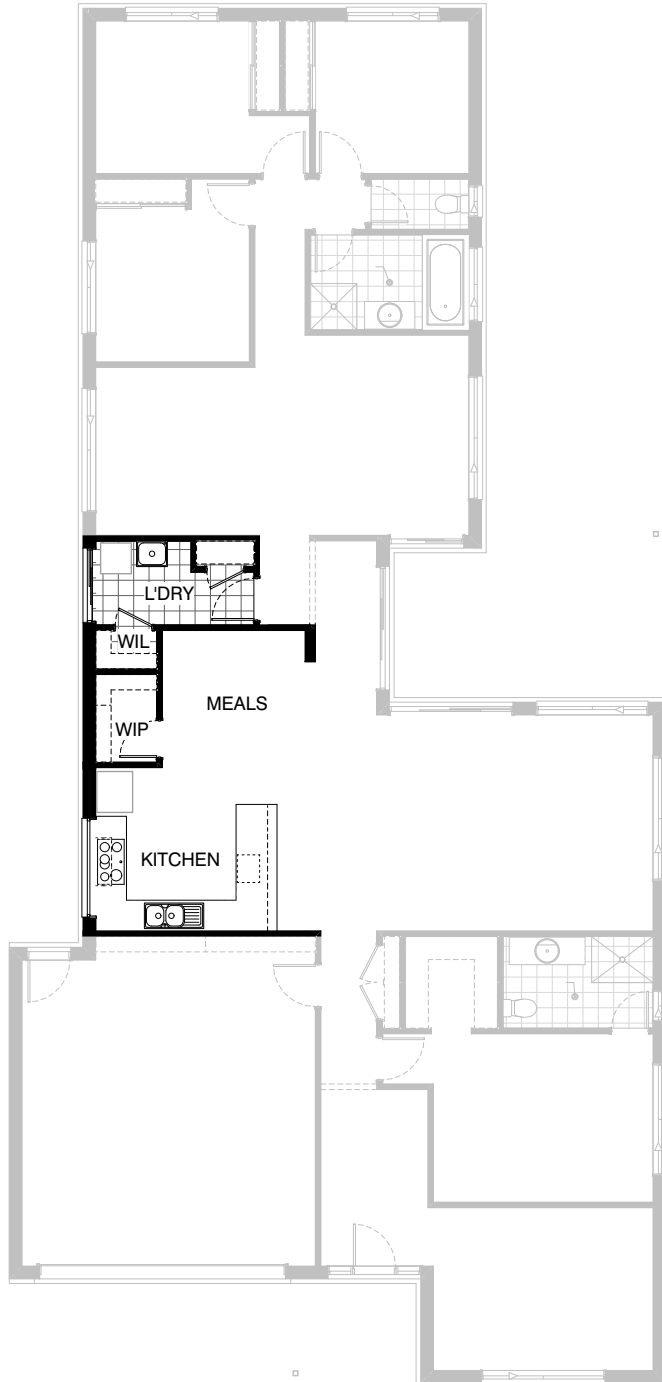
\*Copyright conditions. All photos and illustrations are representative only. Floor plans and specifications may be varied by Burbank without notice, the dimensions are diagrammatic only and a Building Contract with final drawings will display correct dimensions and detail. All designs are the property of Burbank and must not be used, reproduced, copied or varied, wholly or in part without written permission from an authorised Burbank representative. Copyright Burbank Australia (QLD) Pty Ltd. ABN 77 103 014 615. QBCC 1046544.

**Call 13 BURBANK**  
**Visit [burbank.com.au](http://burbank.com.au)**



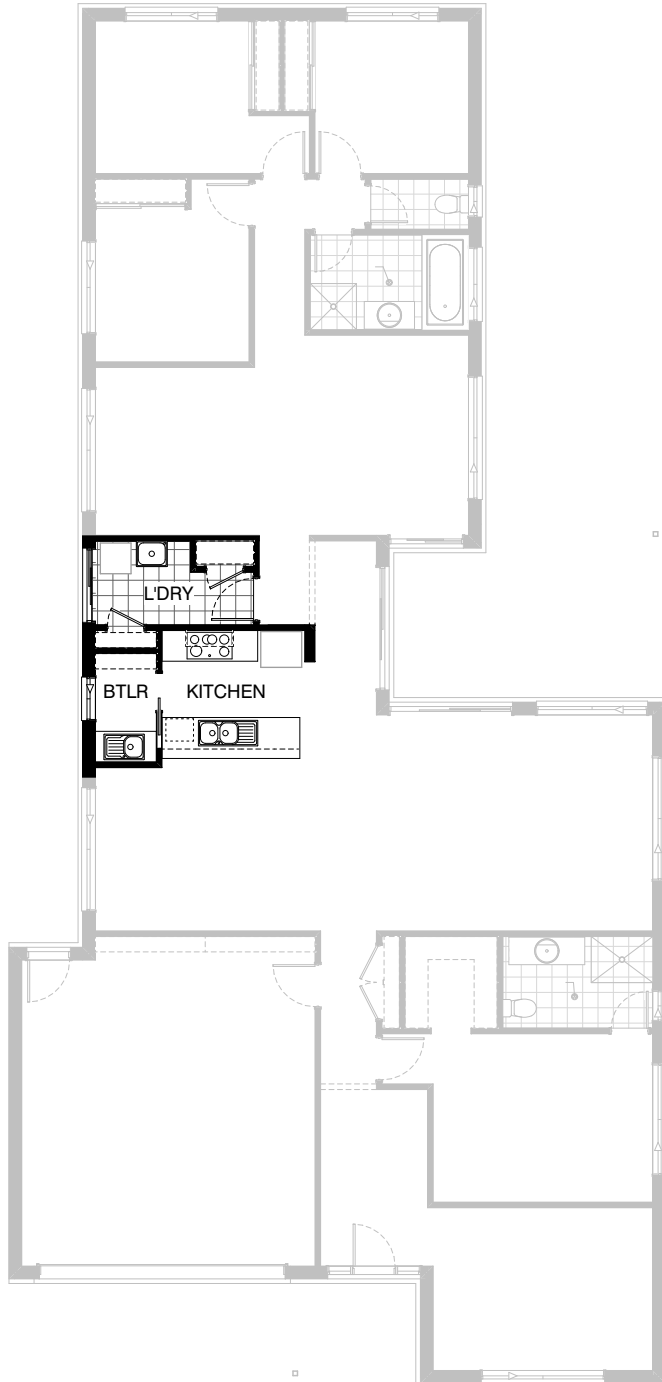
### Option Kitchen01

Provide Kitchen upgrade with alternate layout.  
 1No. 900mm under bench oven with cooktop & retractable rangehood,  
 1No. laminated DW provision,  
 1No. MW provision with pot drawer,  
 1No. 450mm drawer unit,  
 2No. 450mm base cupboards,  
 1No. 900mm base cupboard,  
 Adds WIP to Kitchen with 300mm shelves as required.  
 Adds WIL to Laundry with 300mm shelves as required.



## Option Kitchen02

Provide Kitchen upgrade with alternate layout with relocated ref space.  
 1No. 900mm under bench oven with cooktop & retractable rangehood,  
 1No. laminated DW provision,  
 1No. MW provision with pot drawer,  
 1No. 450mm drawer unit,  
 1No. 450mm base cupboard,  
 1No. 400mm base cupboard,  
 1No. 900mm base cupboard,  
 2No. 900mm corner carcass,  
 Adds WIP to Kitchen with 300mm shelves as required.  
 Adds WIL to Laundry with 300mm shelves as required.  
 Additional 32mm laminate benchtop with tiled splashback to suit.  
 Add AFW0519 aluminium fixed window to Kitchen.



### Option Kitchen03

Provide Kitchen upgrade with alternate layout.

- 1No. 900mm under bench oven with cooktop & retractable rangehood,
- 1No. laminated DW provision,
- 1No. MW provision with pot drawer,
- 1No. 450mm drawer unit,
- 2No. 450mm base cupboards,
- 1No. 900mm base cupboard,
- 1No. 800mm base cupboard,
- 1No. 300mm base cupboard,
- Adds Butlers to Kitchen with 300mm shelves as required.
- Additional 32mm laminate benchtop and 1No. bowl sink with drainer and tiled splashback to suit in Butlers.
- Add 720mm cavity sliding door to Butlers.
- Adds second Linen to Laundry with 300mm shelves as required.
- Add ASW2009 aluminium sliding window to Butlers pantry.



### Option Kitchen04

Provide Kitchen upgrade with alternate layout.  
 1No. 900mm under bench oven with cooktop & retractable rangehood,  
 1No. laminated DW provision,  
 1No. MW provision with pot drawer,  
 1No. 450mm drawer unit,  
 4No. 450mm base cupboards,  
 1No. 900mm base cupboard,  
 1No. 800mm base cupboard,  
 2No. 900mm corner carcass,  
 Adds Butlers to Kitchen with 300mm shelves as required.  
 Additional 32mm laminate benchtop and 1No. bowl sink with drainer  
 and tiled splashback to suit in Butlers.  
 Add 720mm cavity sliding door to Butlers.  
 Adds WIL with 300mm shelves as required.  
 Add ASW2006 aluminium sliding window to Butlers pantry.  
 Add AFW0524 aluminium fixed window to Kitchen.



## Option Kitchen05

Provide Kitchen upgrade with alternate layout.

- 1No. 900mm under bench oven with cooktop & retractable rangehood,
- 1No. laminated DW provision,
- 1No. MW provision with pot drawer,
- 1No. 450mm drawer unit,
- 4No. 450mm base cupboards,
- 2No. 900mm base cupboard,
- 1No. 800mm base cupboard,
- 1No. 900mm corner carcass,
- 2No. 600mm base cupboards,

Adds Butlers to Kitchen with 300mm shelves as required.

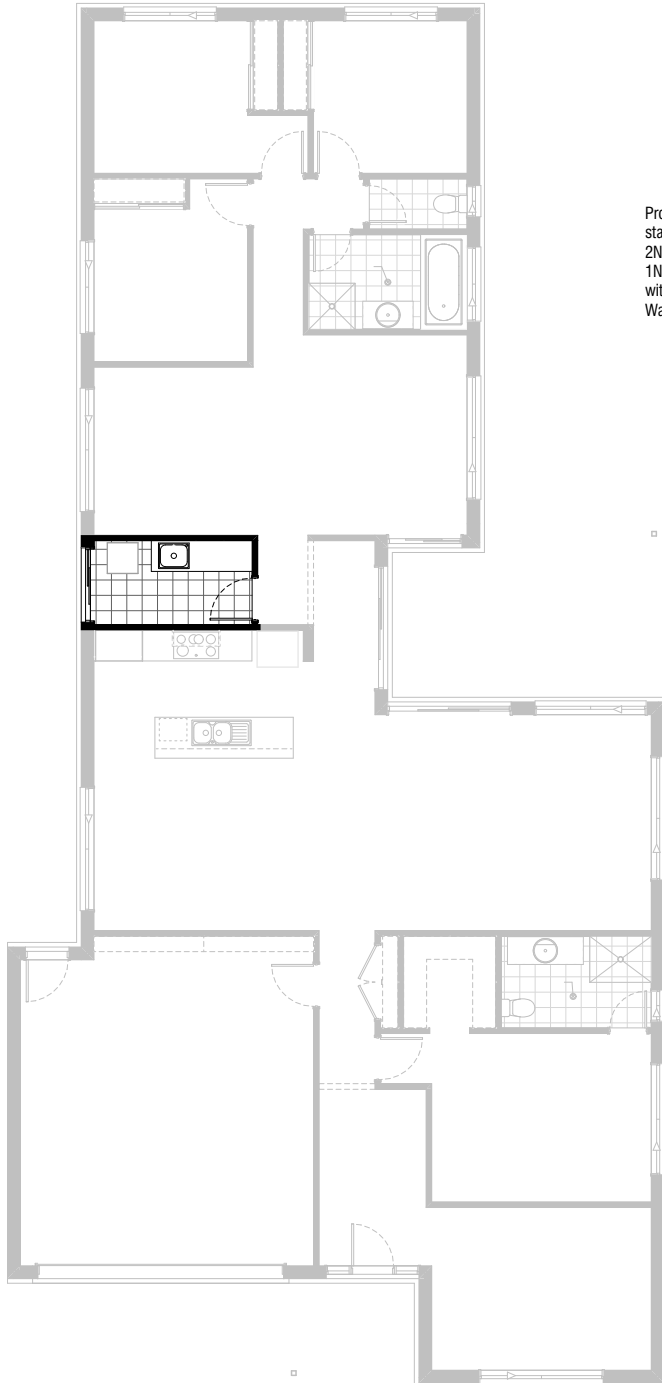
Additional 32mm laminate benchtop and 1No. bowl sink with drainer and tiled splashback to suit in Butlers.

Add 720mm cavity sliding door to Butlers.

Adds WIL with 300mm shelves as required.

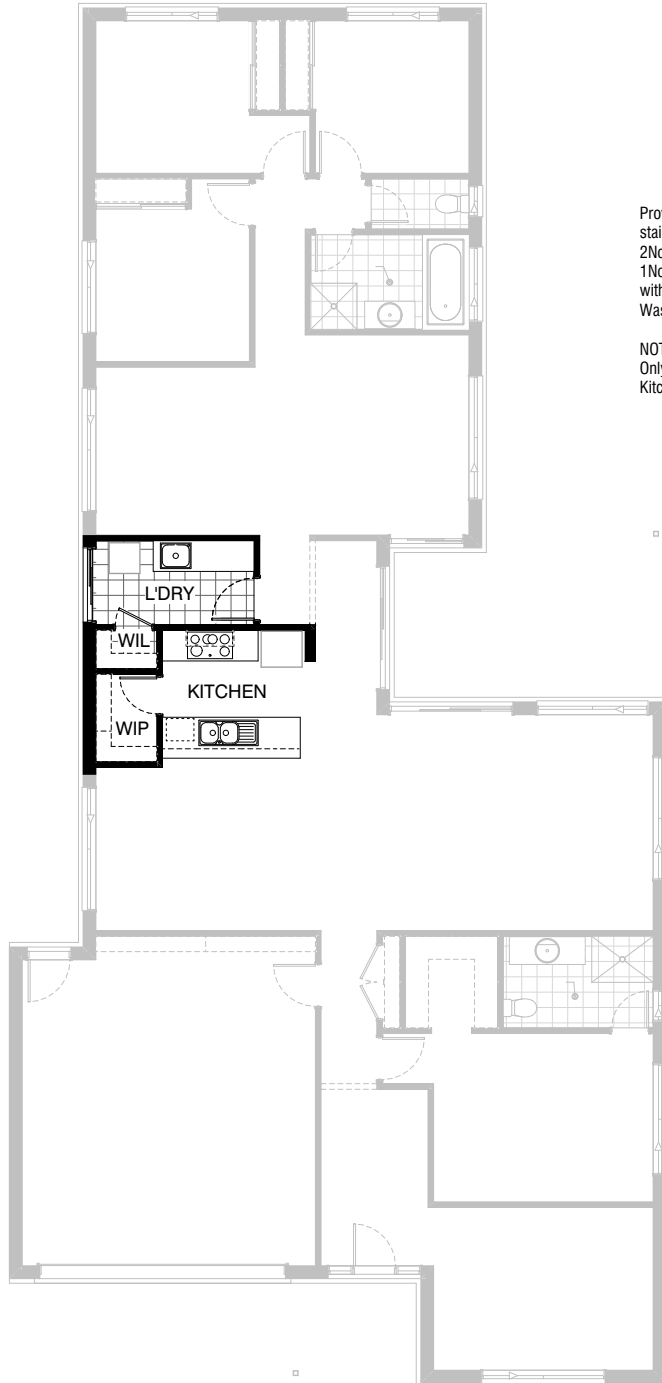
Add ASW2006 aluminium sliding window to Butlers pantry.

Add AFW0524 aluminium fixed window to Kitchen.



### Option Laundry01

Provide Laundry upgrade with laminated cupboards and stainless steel insert trough,  
2No. 800mm base cupboards,  
1No. 300mm base cupboard,  
with additional tiled splashback and benchtop to suit.  
Washing machine water taps concealed within cabinetry.



## Option Laundry02

Provide Laundry upgrade with laminated cupboards and stainless steel insert trough,  
2No. 800mm base cupboards,  
1No. 300mm base cupboard,  
with additional tiled splashback and benchtop to suit.  
Washing machine water taps concealed within cabinetry.

NOTE:  
Only available inconjunction with options Kitchen01 & Kitchen02

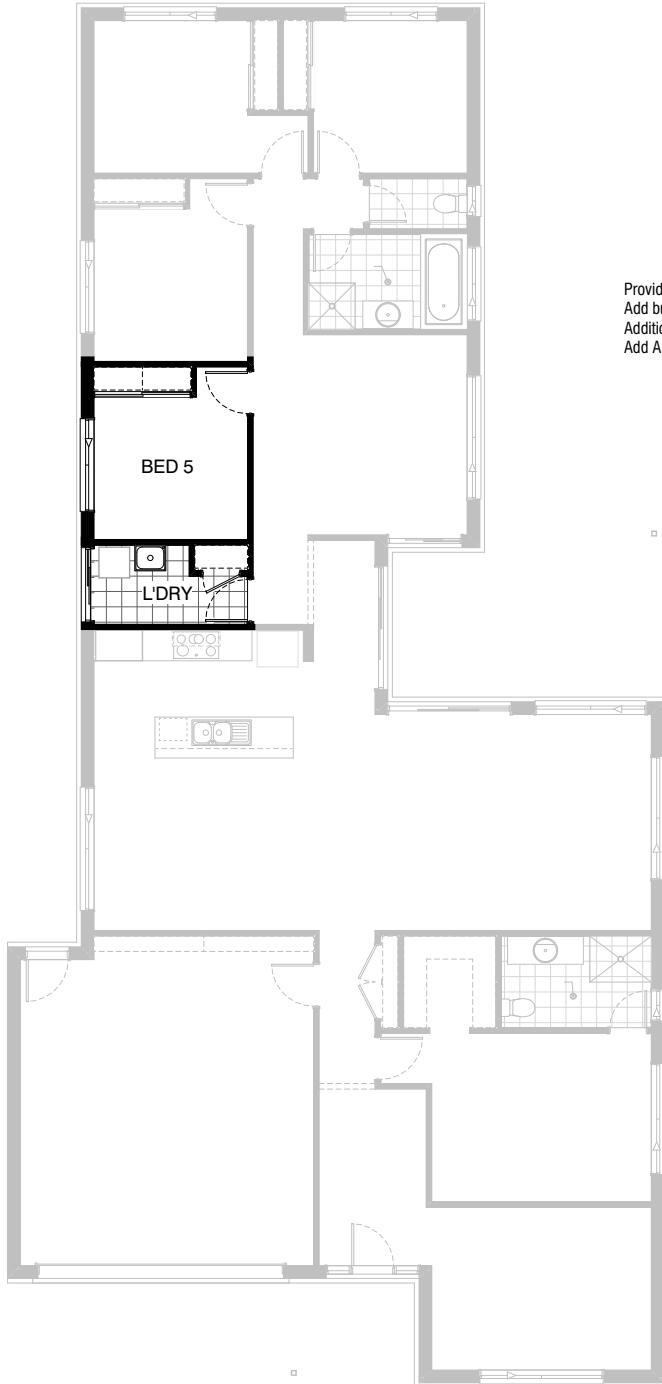




### Option Ensuite01

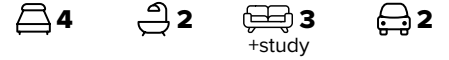
Provide Ensuite upgrade with alternate layout  
900mm x 900mm tiled shower base.  
782 vanity unit.  
Add 1675mm built in bath with hob.  
Add ASW1215 aluminium sliding window to Ensuite.  
Move toilet pan and shower to suit new layout.  
Additional built in robe with Gyprock sliding doors and  
450m shelf to Bed 1.

NOTE:  
Option extends Ensuite by 460mm into WIR area.



### Option Internal01

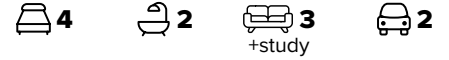
Provide 5th bedroom option in lieu of Study.  
Add built in robe with Gyprock sliding doors and 450m shelf.  
Additional 820mm hinged door.  
Add ASW1218 aluminium sliding window.



**Option Internal02**



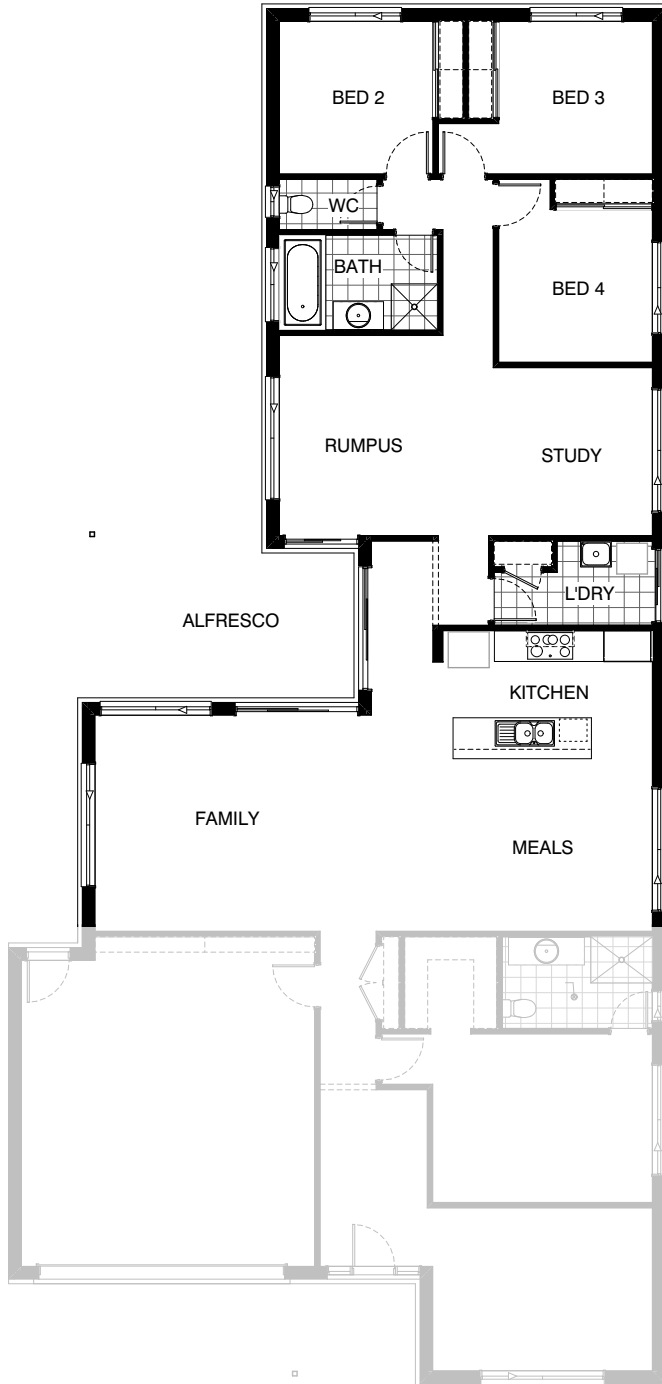
- Provide floor plan option with Bed 1 to the rear of the home.
- Provide 1482mm wide vanity unit to Ensuite.
- 900mm x 1460mm tiled shower base.
- Add ASW1809 aluminium sliding window to Ensuite.
- Guest bedroom adjacent Bed 1 with WTR and Ensuite.
- Provide 1482mm wide vanity unit to Ensuite for Guest room.
- 900mm x 900mm tiled shower base for Guest room.
- Add ASW1006 aluminium sliding window to Ensuite for Guest room.
- Rumpus becomes Lounge.
- Bed 2 & Bed 3 relocated to front of house with Bathroom and separate WC.
- Provide 1282mm wide vanity unit to Bathroom.
- 900mm x 900mm tiled shower base to Bathroom.
- Add 1675mm built in bath with hob to Bathroom.
- Add built in robe with Gyprock sliding doors and 450m shelf to Bed 2 & Bed 3.
- Add Coats to front passage.
- Add 2No. ASW1806 aluminium sliding window to Bed 1.
- Add ASW0515 aluminium sliding window to Bed 1.
- Add ASW1024 aluminium sliding window to Study.
- Add ASW1218 aluminium sliding window to Bed 2.



**Option Internal03**



Provide floor plan option with Bed 1 to the rear of the home.  
 Provide 1582mm wide vanity unit to Ensuite.  
 900mm x 1460mm tiled shower base.  
 Add ASW1806 aluminium sliding window to Ensuite.  
 Add 5th bedroom with built in robe with Gyprock sliding doors and 450m shelf  
 Additional second bathroom & seperate WC  
 Provide 982mm wide vanity unit to Bathroom.  
 900mm x 900mm tiled shower base to Bathroom.  
 Add 1675mm built in bath with hob to Bathroom.  
 Add ASW1215 aluminium sliding window to Bathroom.  
 Add ASW1006 aluminium sliding window to WC.  
 Rumpus becomes Lounge.  
 Bed 2 & Bed 3 relocated to front of house with Bathroom and seperate WC.  
 Provide 1282mm wide vanity unit to Bathroom.  
 900mm x 900mm tiled shower base to Bathroom.  
 Add 1675mm built in bath with hob to Bathroom.  
 Add built in robe with Gyprock sliding doors and 450m shelf to Bed 2 & Bed 3.  
 Add Coats to front passage.  
 Add 2No. ASW1806 aluminium sliding window to Bed 1.  
 Add ASW0515 aluminium sliding window to Bed 1.  
 Add ASW1024 aluminium sliding window to Lounge.  
 Add ASW1218 aluminium sliding window to Bed 2.



**Option Internal04**

Mirror rear section of the home.



### Option Internal05

Provide corner sliding door option to Alfresco.  
Add ACSD 2124-27 aluminium sliding door.