

FLOORPLAN OPTIONS

We personalise our floorplans. Talk to us about our huge range of ready-to-go design options.

Listed details based on Traditional facade floorplan (illustrated)

Facades available:

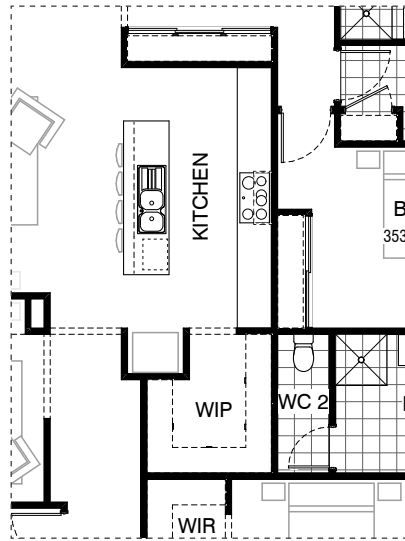
Coastal, Delta, Kingston, Nouveau
Salisbury, Traditional, York

Overall home width 14,270mm

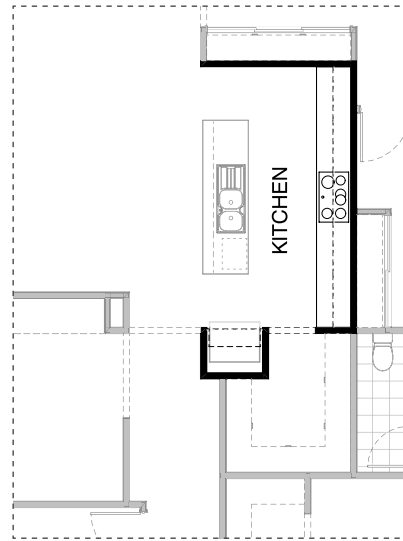
Overall home length 22,310mm

Residence	225.2m ²	24.2sq
Garage	38.8m ²	4.2sq
Porch	4.0m ²	0.4sq
Alfresco	14.5m ²	1.6sq
Total	282.5m²	30.4sq

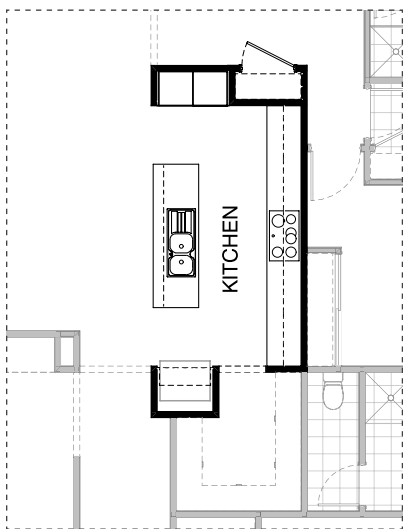
*Copyright conditions. All photos and illustrations are representative only. Floor plans and specifications may be varied by Burbank without notice, the dimensions are diagrammatic only and a Building Contract with final drawings will display correct dimensions and detail. All designs are the property of Burbank and must not be used, reproduced, copied or varied, wholly or in part without written permission from an authorised Burbank representative. Copyright Burbank Australia (QLD) Pty Ltd. ABN 77 103 014 615. QBCC 1046544.



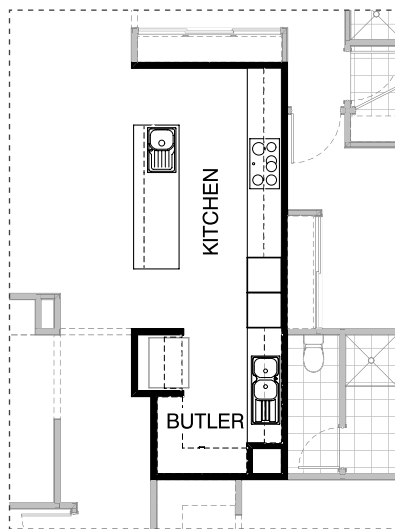
Master Kitchen



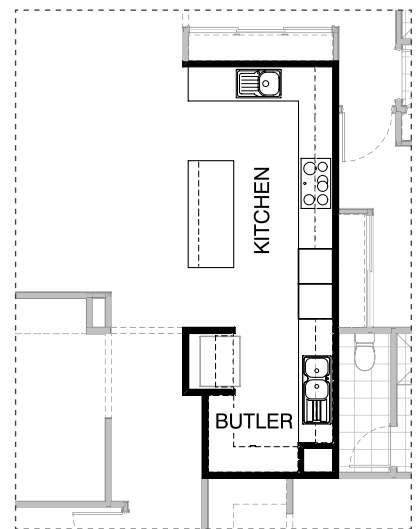
K01



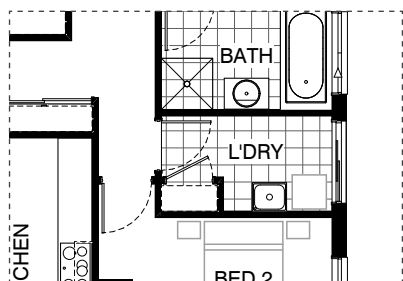
K02



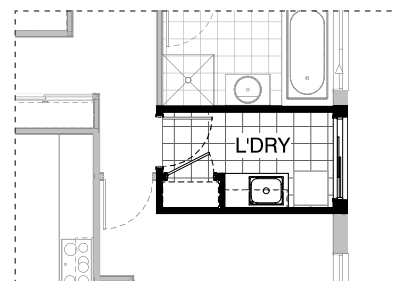
K03



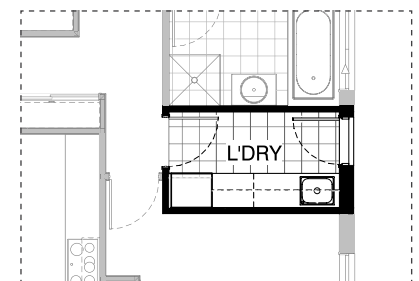
K04



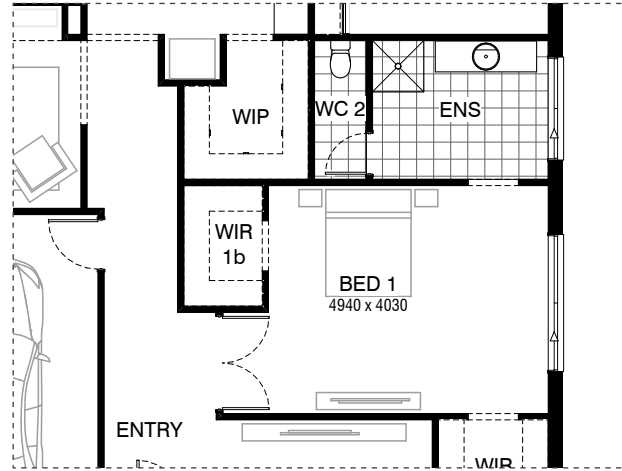
Master Laundry



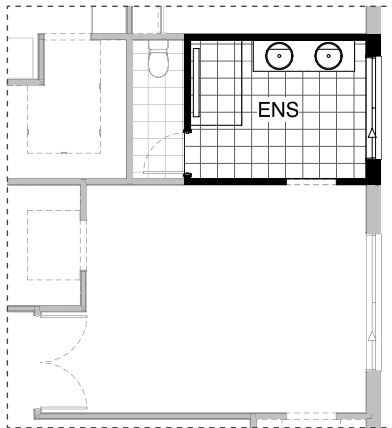
L01



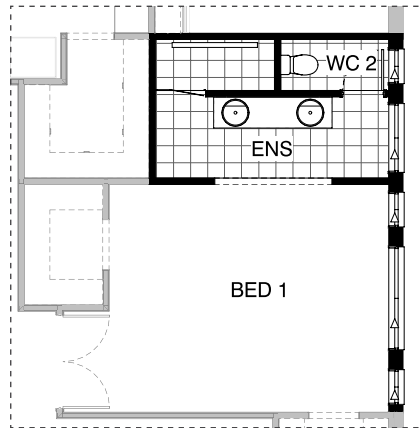
L02



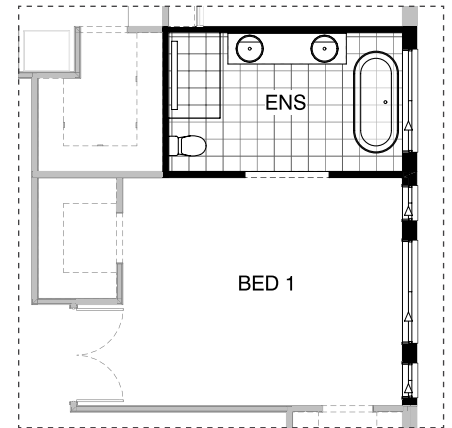
Master Ensuite



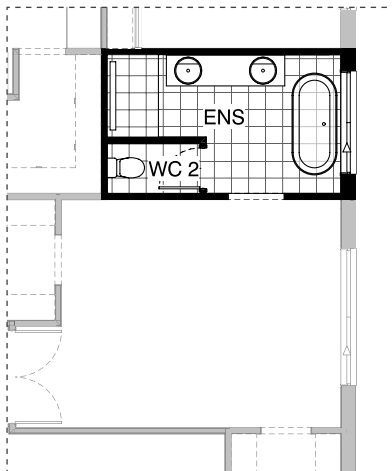
EN01



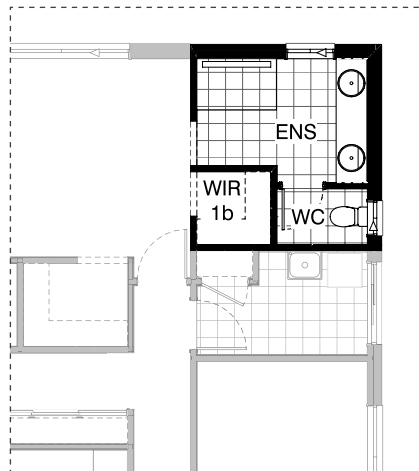
EN02



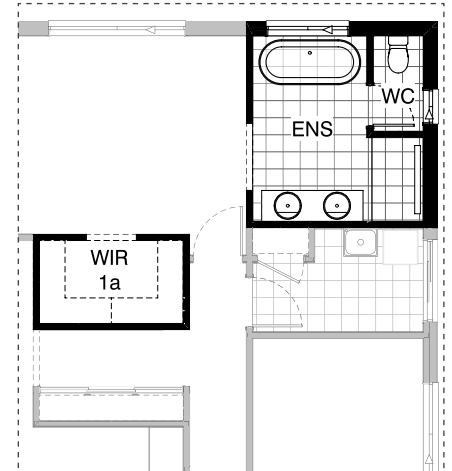
EN03



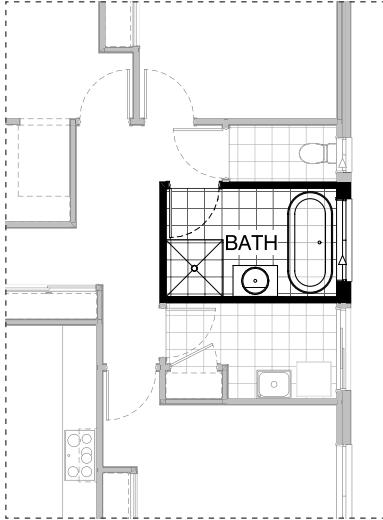
EN04



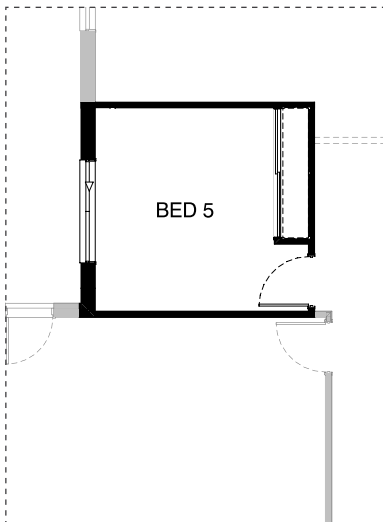
EN05



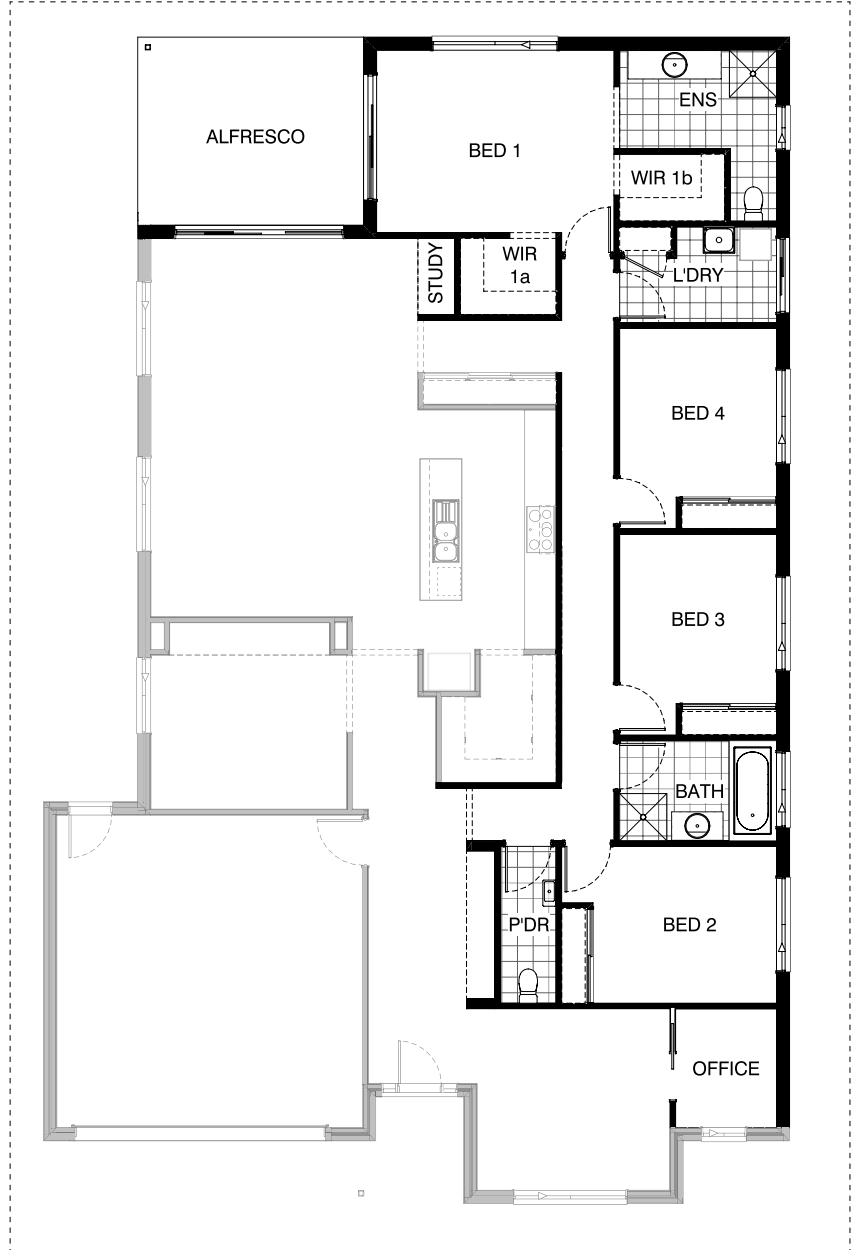
EN06



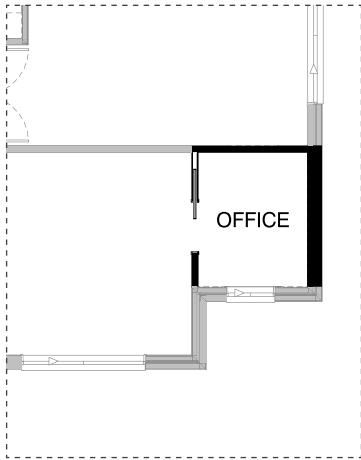
IN01



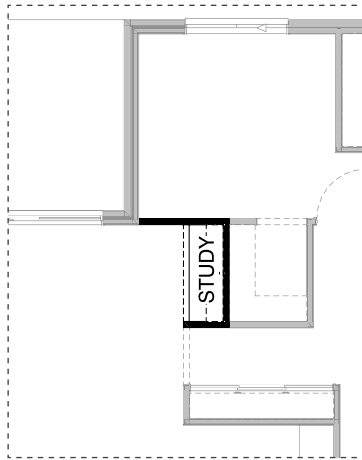
IN02



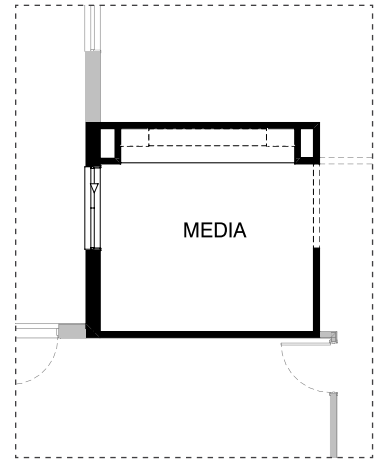
IN03



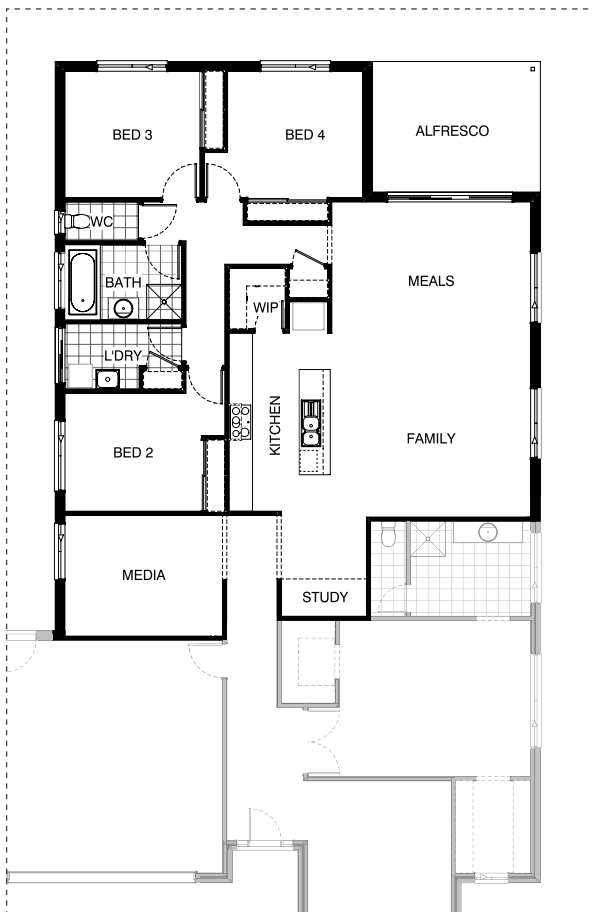
IN04



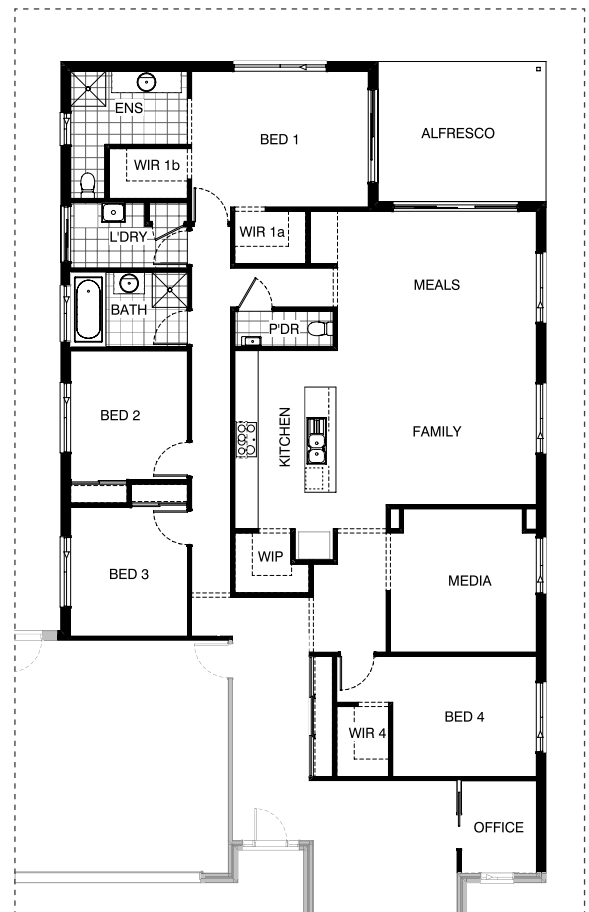
IN05



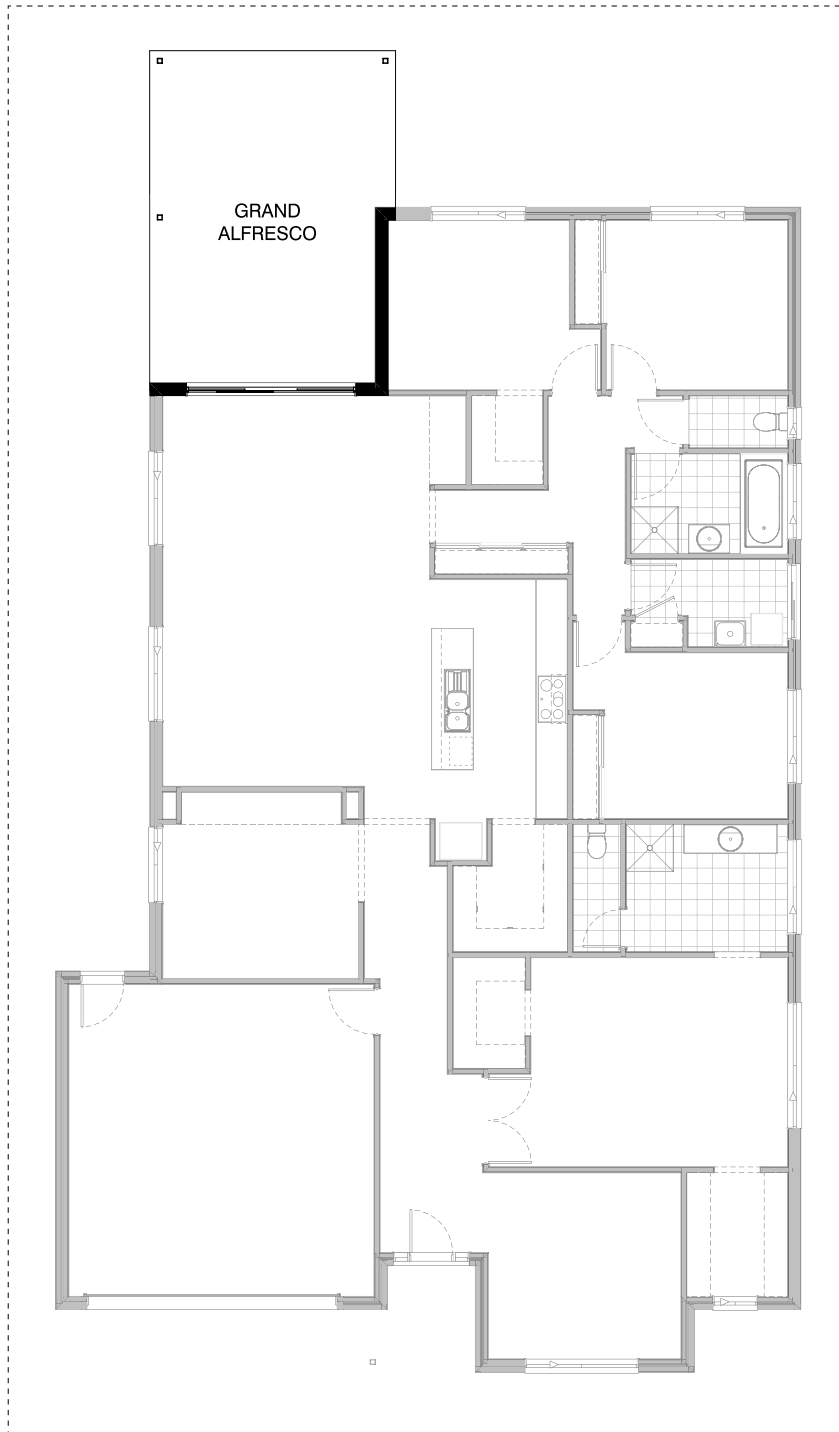
IN06



EX01



EX02



EX03

OPTION DESCRIPTIONS**K01 - Kitchen Option 01**

Provide Kitchen upgrade option, including: 900mm open shelf over Ref. space, 4No. 900mm overhead cupboards.

K02 - Kitchen Option 02

Provide Kitchen upgrade option, including: 900mm open shelf over Ref. space, 4No. 900mm overhead cupboards, 1No. base cupboard in lieu of 900mm UBO 2No. 600mm laminate oven towers with microwave provisions, 1No. 450mm base cupboard to island in lieu of microwave provision with pot drawer. Reduce island benchtop to suit. Reduce Linen 2 and provide 920mm hinged door in lieu of sliding doors.

Note: Option not available with options External01, External02.

K03 - Kitchen Option 03

Provide Kitchen upgrade option with Butler's Pantry in lieu of WIP, including: additional benchtop and tiled splashback, relocated Ref space with 900mm laminate open shelf, 900mm retractable rangehood, 900mm cook top, dishwasher provision, 1No. 450mm drawer unit, 2No. 900mm base cupboards, 4No. 800mm base cupboards, 1No. 450mm base cupboard, 3No. 400mm base cupboards, 2No. 800mm overhead cupboards, 2No. 400mm overhead cupboards, 2No. 600mm laminate oven towers with microwave provisions, 1No. double bowl sink to Butler's Pantry, 1No. single bowl sink to Kitchen island bench, 2No. 450mm shelves to Butler's Pantry, 2No. 300mm deep 60mm thick open shelving over Butler's sink.

Note: Option not available with options External01, External02.

K04 - Kitchen Option 04

Provide L-shaped Kitchen upgrade option with Butler's Pantry in lieu of WIP, including: additional bench top and tiled splashback, relocated Ref space with 900mm laminate open shelf, 900mm retractable rangehood, 900mm cook top, dishwasher provision, 1No. 450mm drawer unit, 3No. 900mm base cupboards, 1No. 900mm base corner cupboard with bi-fold doors, 2No. 800mm base cupboards, 2No. 700mm base cupboards, 1No. 600mm base cupboard, 1No. 450mm base cupboard, 2No. 700mm overhead cupboards, 1No. 800mm open shelf overhead cupboard, 2No. 600mm laminate oven towers with microwave provisions, 1No. double bowl sink to Butler's Pantry, 1No. single bowl sink to Kitchen return bench, 2No. 450mm shelves to Butler's Pantry, 2No. 300mm deep 60mm thick open shelving over Butler's sink.

Note: Option not available with options External01, External02.

L01 - Laundry Option 01

Provide Laundry upgrade option with laminate base and overhead cupboards and stainless steel inset trough, including: 1No. 700mm base cupboard, 1No. 350mm base cupboard, 1No. 700mm overhead cupboard, 1No. 350mm overhead cupboard, additional benchtop and tiled splashback to suit.

L02 - Laundry Option 02

Provide Laundry upgrade option with laminate base and overhead cupboards and stainless steel inset trough, including: 1No. 700mm base cupboard, 2No. 700mm overhead cupboards, 1No. 800mm overhead cupboard, 1No. 700mm full height laminate Linen cupboard, additional benchtop and tiled splashback to suit. Provide 2105mm x 850mm Aluminium entry access door in lieu of standard 2110mm x 1450mm Aluminium sliding door. Option also provides open space under bench for washer and dryer side-by-side and raises the bench height to 950mm from FFL (kicker height raises).

EN01 - Ensuite Option 01

Provide Ensuite upgrade option, including: 1782mm vanity with double basins, 1500mm x 900mm tiled shower base with grate drain.

Note: Option not available with options Internal03, External02.

EN02 - Ensuite Option 02

Provide Ensuite upgrade option with rearranged layout, including: 2082mm vanity with double basins, 2100mm x 900mm tiled shower base with grate drain, enclosed WC with 720mm hinged door. Provide 1027mm x 610mm

and 1027mm x 1210mm Aluminium sliding windows in lieu of standard. Provide 2No. 1800mm x 610mm Aluminium sliding windows and 1No. 514mm x 1810mm Aluminium sliding window to Bed 1 in lieu of standard.

Note: Option not available with options Internal03, External02.

EN03 - Ensuite Option 03

Provide Ensuite upgrade option with rearranged layout, including: 1780mm freestanding bath, 2082mm vanity with double basins, 1500mm x 900mm tiled shower base with grate drain, relocated toilet pan. Provide 2No. 1800mm x 610mm Aluminium sliding windows and 1No. 514mm x 1810mm Aluminium sliding window to Bed 1 in lieu of standard.

Note: Option not available with options Internal03, External02.

EN03 - Ensuite Option 04

Provide Ensuite upgrade option with rearranged layout, including: 1780mm freestanding bath, 2082mm vanity with double basins, 1450mm x 900mm wall-to-wall tiled shower base with grate drain, enclosed WC with 720mm hinged door.

Note: Option not available with options Internal03, External02.

EN05 - Ensuite Option 05

Provide Ensuite upgrade option with rearranged layout, including: 1No. 2082mm Vanity, including 1 row tiling beneath mirror to suit wall-to-wall benchtop including returns. 1400mm x 900mm tiled shower base with grate drain, enclosed WC with 720mm hinged door. Provide 1027mm x 850mm and 1027mm x 610mm Aluminium sliding windows in lieu of standard.

Note: Option only available with options Internal03, External02.
Option not available with options Internal04, Internal05, External01.

EN06 - Ensuite Option 06

Provide Ensuite upgrade option with rearranged layout, including: 1780mm freestanding bath, 1782mm vanity with double basins, 1480mm x 900mm wall-to-wall tiled shower base with grate drain, enclosed WC with 720mm hinged door. Provide 1200mm x 1450mm and 1027mm x 610mm Aluminium sliding windows in lieu of standard. Provide additional run of 450mm shelving to WIR and remove Study Nook.

Note: Option only available with options Internal03, External02.
Option not available with options Internal04, Internal05, External01.

IN01 - Internal Option 01

Provide Bathroom upgrade option, including: 1780mm freestanding bath, 1000mm x 1000mm tiled shower base, 782mm vanity with single basin.

IN02 - Internal Option 02

Provide 5th Bedroom option in lieu of Media room, including: built-in Robe with 450mm shelf and hanging rail with full-width sliding doors, 870mm hinged door in lieu of bulkhead opening, 1200mm x 1810mm Aluminium sliding window in lieu of standard. Remove 2No. plaster-lined Voids with bulkhead over.

Note: Option not available with options Internal06, External01, External02.

IN03 - Internal Option 03

Provide floor plan option which moves Bed 1 to the rear of the home as shown.

Note: Option not available with options Ensuite01, Ensuite02, Ensuite03, Ensuite04, Internal04, Internal05, External01, External02.

IN04 - Internal Option 04

Provide Home Office option in lieu of WIR 1a to Bed 1, including: 870mm cavity sliding door to Living, Remove bulkhead opening and 2No. 450mm shelves with hanging rails.

Note: Option not available with options Ensuite05, Ensuite06, Internal03, External02.

IN05 - Internal Option 05

Provide built-in joinery option to Study Nook, including: 600mm deep 32mm thick laminate benchtop, 1No. 450mm drawer unit under desk, 2No. 300mm deep 60mm thick open shelves over.

Note: Option not available with options Ensuite05, Ensuite06, Internal03, External01, External02.

IN06 - Internal Option 06

Provide built-in joinery option to Media room, including: 600mm deep 32mm thick laminate benchtop, 3No. 1000mm tv unit cupboards, 2No. 450mm open shelf overhead cupboards, 2No. 300mm deep 60mm thick open shelves over. Remove bulkhead over between voids.

Note: Option not available with options Internal02, External01, External02.

EX01 - External 01

Provide floor plan option which mirrors the rear of the home as shown.

Note: Option not available with options Kitchen02, Kitchen03, Kitchen04, Ensuite05, Ensuite06, Internal02, Internal03, Internal05, Internal06, External02.

EX02 - External 02

Provide floor plan option which mirrors the rear of the home with Bed 1 to the rear as shown.

Note: Option not available with options Kitchen02, Kitchen03, Kitchen04, Ensuite01, Ensuite02, Ensuite03, Ensuite04, Internal02, Internal03, Internal04, Internal05, External01.

EX03 - External 03

Provide Grand Alfresco option, including: 2No. additional timber posts, additional structural concrete slab, additional tiled roof over. Option adds 3.0m to the length of the home. Option adds 14.13m² to the total floor area.