

KEYSTONE 48

5 3 2

Total squares 48sq

B
SERIES

Minimum
Lot Width
14.0m

Minimum
Lot Length
30.0m



Design Dimensions
10,310mm(W) x 23,150mm(L).

Facade Choices
Fullerton, Huntington, Moorpark,
Oakwood, Pallsades, Redlands, Riverside.
Details based on Riverside façade floorplan (illustrated)

DESIGN DIMENSIONS

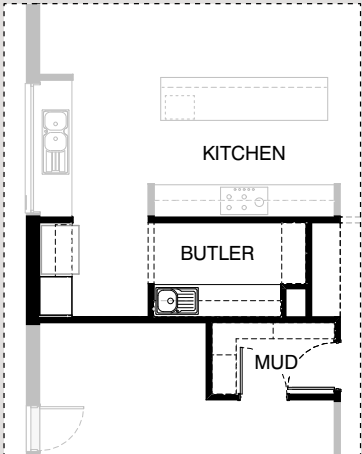
Residence	385.9m ²	41.5sq
Garage	40.9m ²	4.4sq
Porch	3.7m ²	0.4sq
Alfresco	15.6m ²	1.7sq
Total	446.1m²	48.0sq

Burbank

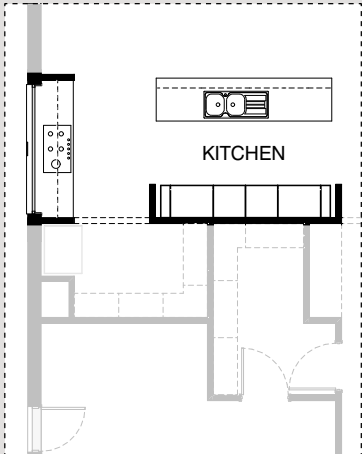
*Copyright conditions. All photos and illustrations are representative only. Floor plans and specifications may be varied by Burbank without notice, the dimensions are diagrammatic only and a Building Contract with final drawings will display correct dimensions and detail. All designs are the property of Burbank and must not be used, reproduced, copied or varied, wholly or in part without written permission from an authorised Burbank representative. Copyright Burbank Australia Pty Ltd. ABN 91 007 099 872. Builders Registration Number CDB-U-52603.



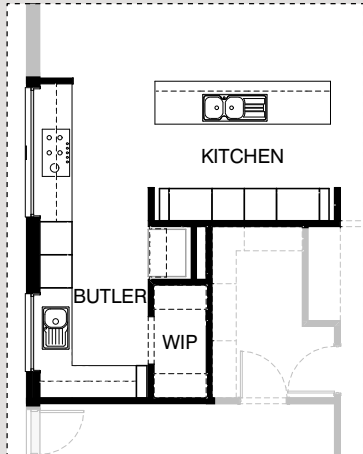
KITCHEN OPTIONS



K01

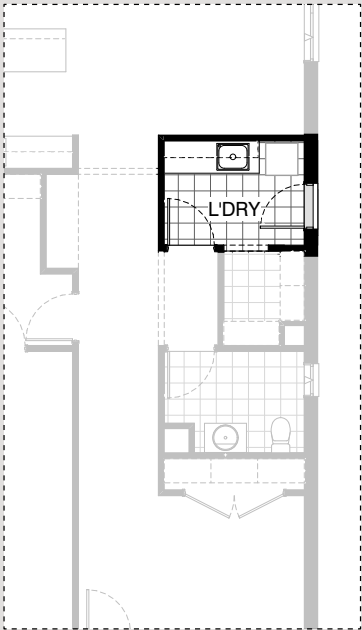


K02

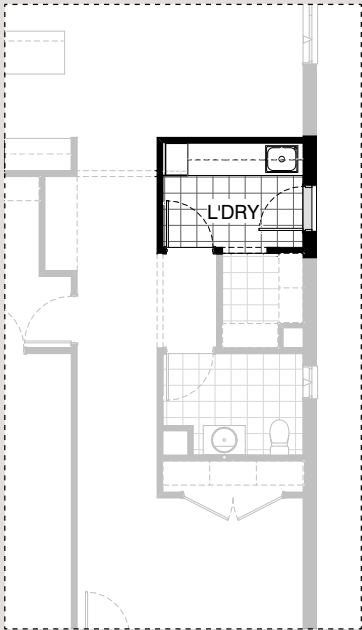


K03

LAUNDRY OPTIONS

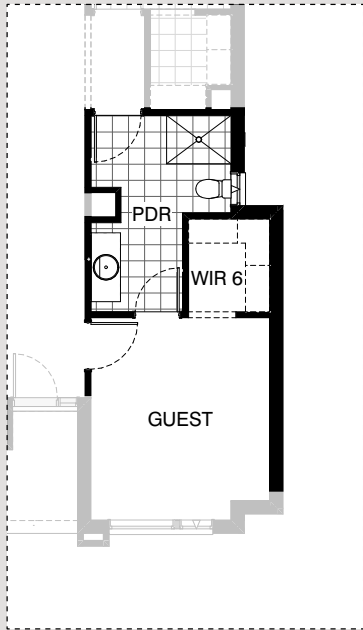


L01



L02

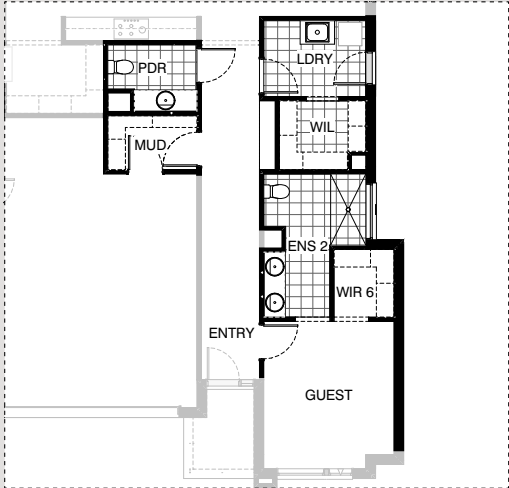
INTERNAL OPTIONS



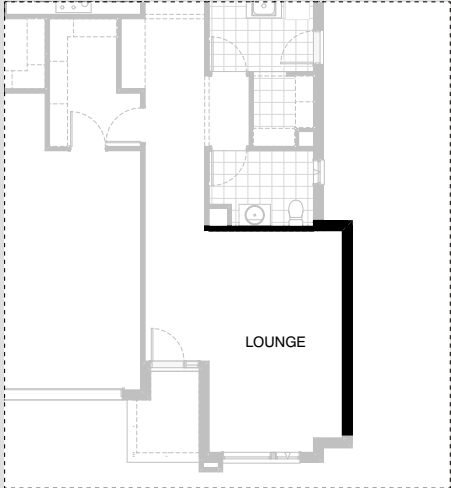
IN01



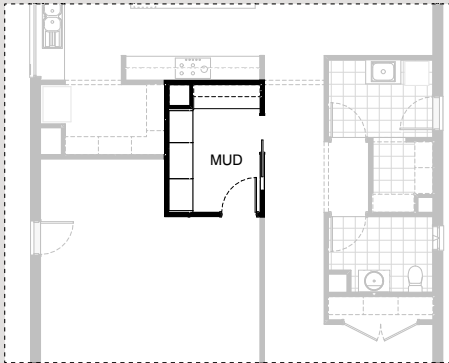
INTERNAL OPTIONS



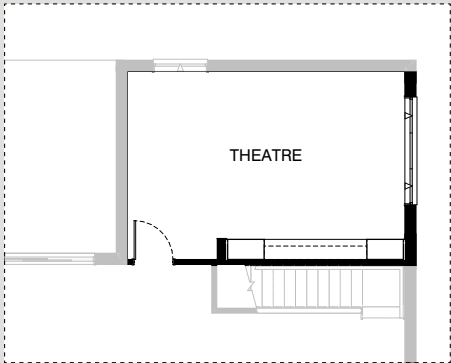
IN02



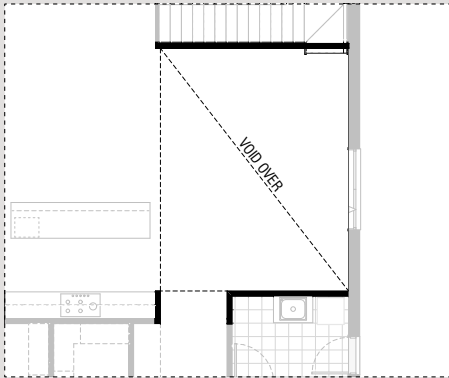
IN03



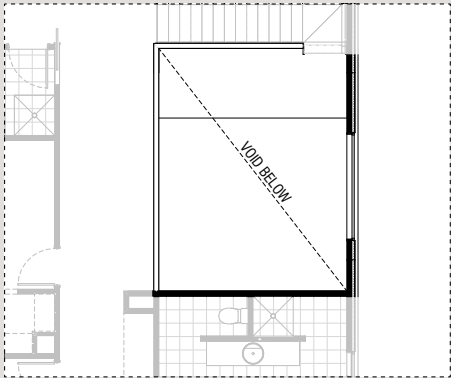
IN04



IN05



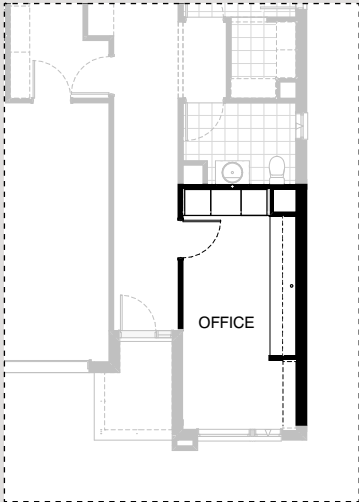
IN06 GF



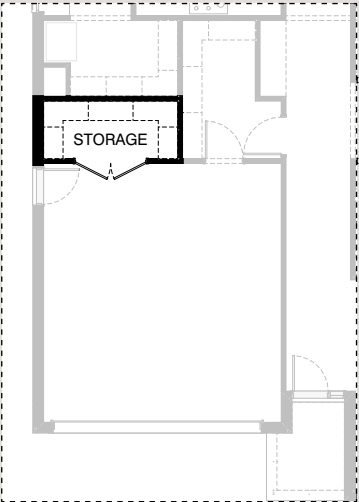
IN06 FF



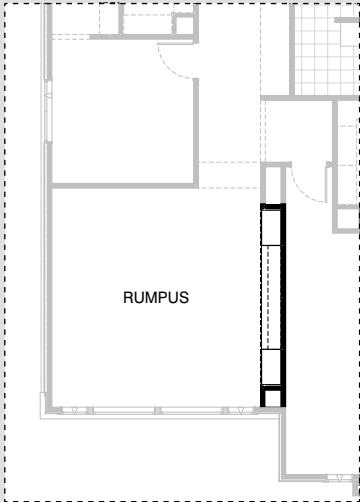
INTERNAL OPTIONS



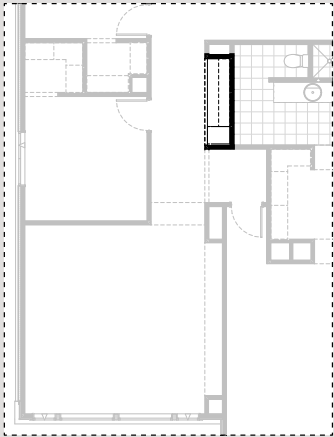
IN07



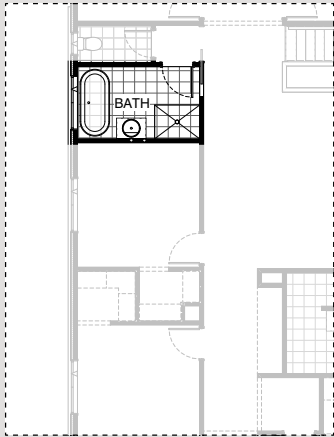
IN08



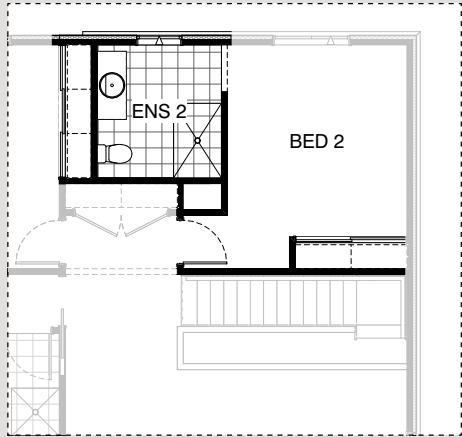
IN09



IN10



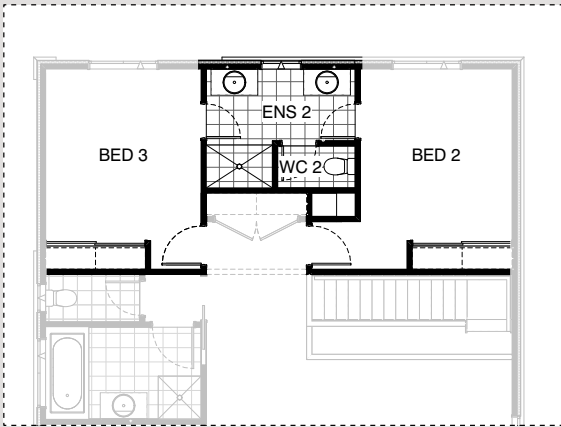
IN11



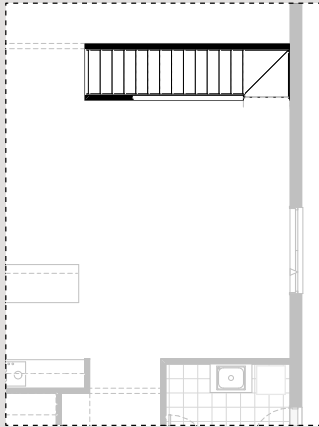
IN12



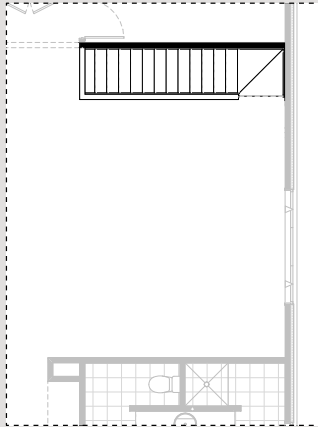
INTERNAL OPTIONS



IN13

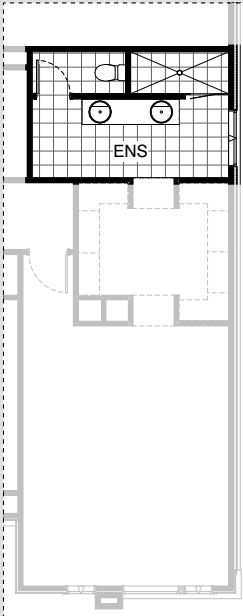


IN14 GF

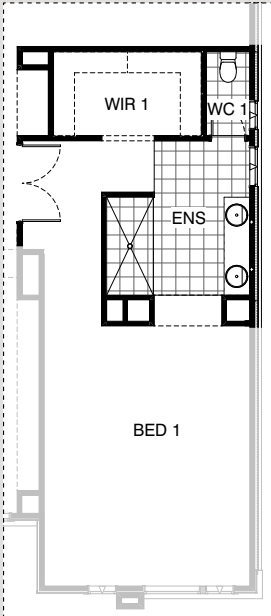


IN14 FF

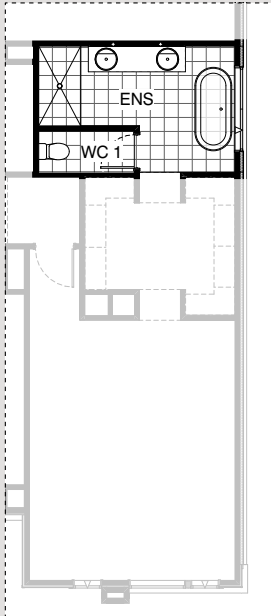
ENSUITE OPTIONS



EN01

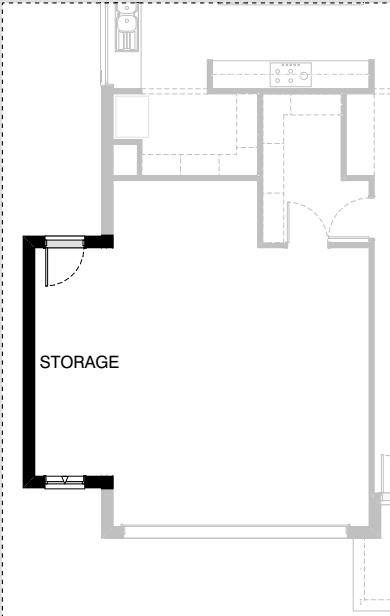


EN02



EN03

GARAGE OPTIONS



G01

KEYSTONE 48

OPTION DESCRIPTIONS

Kitchen Option 01

Provide Butler's Pantry In lieu of Walk-in Pantry, including:
2No. 800mm base cupboards,
1No. 700mm base cupboard,
2No. 300mm deep 60mm thick open shelves over sink,
1No. 970mm open shelf over Ref. space,
1No. 700mm laminated pantry unit,
additional single bowl sink,
additional benchtop and tiled splashback to suit and Relocated plaster-lined void.
Key drop & Mud room decreases to accommodate.

Kitchen Option 02

Provide Kitchen upgrade option with sink relocated to island benchtop and cooktop relocated to exterior wall benchtop, including:
900mm cooktop,
900mm retractable rangehood,
dishwasher provision,
450mm drawer unit,
2No. 900mm base cupboards,
3No. 800mm base cupboards,
1No. 400mm base cupboard,
2No. 800mm overhead cupboards,
2No. 600mm laminate oven towers with microwave provisions,
2No. 800mm laminated pantry units,
2No. 180mm laminated wine racks,
1No. 514mm x 2410mm aluminium fixed window with no bottom reveal.
Meals decreases in 10mm to accommodate.

Kitchen Option 03

Provide Kitchen upgrade option with Butler's Pantry and WIP. Kitchen includes:
900mm cooktop,
900mm retractable rangehood,
dishwasher provision,
450mm drawer unit,
2No. 900mm base cupboards,
3No. 800mm base cupboards,
1No. 400mm base cupboard,
2No. 800mm overhead cupboards,
2No. 600mm laminate oven towers with microwave provisions,
2No. 800mm laminated pantry units,
2No. 180mm laminated wine racks,
1No. 514mm x 2410mm aluminium fixed window with no bottom reveal in lieu of standard.
Option Kitchen01 Option Kitchen02 Option Kitchen03
Butler's Pantry includes:
additional 600mm deep benchtop,
single bowl sink,
1No. 900mm open shelf over Ref. space,
1No. 900mm base cupboard,
1No. 900mm corner base cupboard,
1No. 800mm base cupboard,
1No. 350mm base cupboard,
1No. 900mm overhead cupboard,
1No. 800mm overhead open shelf,
1No. 180mm laminated wine rack,
2No. 600mm laminated pantry units,
1No. 1200mm x1450mm aluminium fixed window with no bottom reveal.
Relocated plaster-lined void.
WIP decreases to accommodate & Storage is deleted.

Laundry Option 01

Provide Laundry upgrade with laminate base and overhead cupboards and inset trough, including:
1No. 900mm base cupboard,
1No. 900mm overhead cupboard,
1No. 800mm base cupboard,
1No. 800mm overhead cupboard,
additional benchtop and tiled splashback to suit.

Laundry Option 02

Provide Laundry upgrade with laminate base and overhead cupboards and inset trough, including:
1No. 700mm base cupboard,
3No. 700mm overhead cupboards,
1No. 400mm laminated broom unit,
additional benchtop and tiled splashback to suit.
Increases benchtop height to 950mm and provides open space under to store washing machine and dryer side-by-side.

Internal Option 01

Provide Guest Bed option with 2-way Powder / Ensuite in lieu of Office, including:
Walk-in Robe with bulkhead opening and
2No. 450mm shelf with hanging rail,
additional 870mm and 820mm hinged doors to new bed,
additional 1200mm x 900mm tiled shower base,
1No. 1282mm vanity with single basin and
1029mm x 610mm aluminium awning window to new Powder room.
Option pushes ground floor exterior wall out by 720mm with tiled roof over.
option adds 4.14m² to total floor area.

Internal Option 02

Provide Guest Bed option with dedicated Ensuite in lieu of Office and Powder, including:
Walk-in Robe with bulkhead opening and
2No. 450mm shelf with hanging rail,
additional 1No. 870mm hinged door to new bed,
additional 1820mm x 900mm wall-to-wall tiled shower base,
1No. 1582mm vanity with double basins including
1 row tiling beneath mirror to suit wall-to-wall benchtop including returns,
and 350mm x 1450mm aluminium fixed window over shower.
Option pushes ground floor exterior wall out by 720mm with tiled roof over.
870mm hinged door to Laundry moves as shown and WIL increases with Key drop with bulkhead over.
Powder room is relocated to Mud room with 870mm hinged door,
1No. 1582mm vanity with single basin including
1 row tiling beneath mirror to suit wall-to-wall benchtop including returns.
Option adds 4.14m² to total floor area.

Internal Option 03

Provide Lounge in lieu of Office, including:
Option pushes Ground floor exterior wall out by 720mm with tiled roof over.
Option adds 4.09m² to total floor area.

Internal Option 04

Provide built-in joinery to Mud room, including:
600mm deep 32mm thick laminate benchtop,
2No. 800mm TV unit drawers,
2No. 300mm deep 60mm thick open shelves,
1No. 900mm laminated cupboard,
2No. 800mm laminated cupboards.
920mm cavity sliding door added to Mud room in lieu of hinged door..

Internal Option 05



KEYSTONE 48

OPTION DESCRIPTIONS

Provide Theatre in lieu of Living with built-in joinery, including:
1No. 870mm hinged door in lieu of bulkhead opening,
450mm deep 32mm thick laminate benchtop,
2No. 800mm TV unit cupboards,
1No. 700mm TV unit cupboard,
2No. 300mm deep 60mm thick open shelves,
2No. 800mm laminated cupboards,
1No. 180mm plaster-lined nib wall.
Move 1029mm x 2410mm aluminium awning window as shown.

Internal Option 06 GF

Provide double height Void over Meals area by removing Activity above.
Provide 1457mm x 2410mm aluminium fixed window to First floor in lieu of standard,
provide extension to 1020mm high dwarf wall balustrade

Internal Option 06 FF

Provide double height Void over Meals area by removing Activity above.
Provide 1457mm x 2410mm aluminium fixed window to First floor in lieu of standard,
provide extension to 1020mm high dwarf wall balustrade.

Internal Option 07

Provide built-in joinery to Office, including:
600mm deep 32mm thick benchtop,
2No. 900mm overhead cupboards,
3No. 450mm overhead open shelf units,
1No. 700mm laminated cupboard,
2No. 600mm laminated cupboards,
1800mm high x 300mm wide open shelving,
provide additional 870mm hinged door,
plaster-lined void and nib wall.

Internal Option 08

Provide enclosed Storage area to Garage, including:
3No. 450mm shelving,
additional stud and plaster wall,
2No. 820mm hinged doors.

Internal Option 09

Provide built-in joinery to Rumpus, including:
450mm deep 32mm thick laminate benchtop,
3No. 800mm TV unit cupboards,
2No. 800mm laminated cupboards.
Reduce the bulkhead depth to 108mm.

Internal Option 10

Provide built-in joinery to Study Nook, including:
600mm deep 32mm thick laminate benchtop,
1No. 450mm drawer unit under desk,
1No. 450mm laminated cupboard.
Reduce the bulkhead depth to 108mm.

Internal Option 11

Provide Bathroom upgrade option, including:
1No. 1780mm freestanding bath,
1200mm x 900mm tiled shower base,
1No. 782mm vanity with single basin.

Internal Option 12

Provide Ensuite option to Bed 2 in lieu of 2No. WIRs, including:
1400mm x 900mm tiled shower base,
1No. 1282mm vanity with single basin, toilet pan,
1029mm x 850mm aluminium awning window.
Provide 2No. built-in Robes with 450mm shelving and hanging rail.
Bed 2 decreases by 200mm to accommodate.

Internal Option 13

Provide 'Jack and Jill' Ensuite option to Beds 2 and 3 in lieu of 2No. WIRs, including:
2No. 720mm hinged doors,
1390mm x 900mm wall-to-wall tiled shower base,
2No. 982mm vanities with single basin,
enclosed WC with 720mm hinged door,
1029mm x 850mm aluminium awning window.
Provide 2No. built-in Robes with 450mm shelving and hanging rails.
Beds 2 and 3 decreases in size to accommodate.

Internal Option 14 GF

Alternate Stair layout.

Internal Option 14 FF

Alternate Stair layout.

Ensuite Option 01

Provide Ensuite upgrade option, including:
1No. 2082mm vanity with double basins,
2100mm x 900mm wall-to-wall tiled shower base,
720mm hinged door to create enclosed WC.

Ensuite Option 02

Provide Ensuite upgrade option with re-arranged layout, including:
1No. 2082mm vanity with 2100mm benchtop abutting one wall and double basins,
2100mm x 1000mm wall-to-wall tiled shower base,
enclosed WC with 720mm hinged door,
1No. 1200mm x 610mm aluminium awning window to WC,
1No. 1200mm x 850mm aluminium awning window to Ensuite in lieu of standard,
relocated WIR with 3No. 450mm shelving.
Provide 2No. 820mm hinged entry doors to Bed 1 in lieu of standard.
Study Nook decreases to accommodate.

Ensuite Option 03

Provide Ensuite upgrade option with re-arranged layout, including:
1No. 1780mm freestanding bath,
1No. 2082mm vanity with double basins,
1710mm x 900mm wall-to-wall tiled shower base,
enclosed WC with 720mm hinged door,
1No. 1200mm x 1810mm aluminium awning window in lieu of standard.

Garage Option 01

Provide extension to Garage to create additional Storage area including:
1No. 2057mm x 850mm aluminium awning feature window.
Increases width of the home by 1680mm.
Increases area of the home by 9.07m²

