

<b>Facades available:</b>	
Coastal, Delta, Kingston, Nouveau Scarborough, Traditional, York	
<b>Overall home width</b>	<b>11.39m</b>
<b>Overall home length</b>	<b>19.43m</b>

Residence	144.9m <sup>2</sup>	15.6sq
Garage	37.4m <sup>2</sup>	4.0sq
Porch	3.8m <sup>2</sup>	0.4sq
Alfresco	11.4m <sup>2</sup>	1.2sq
<b>Total</b>	<b>197.5m<sup>2</sup></b>	<b>21.3sq</b>

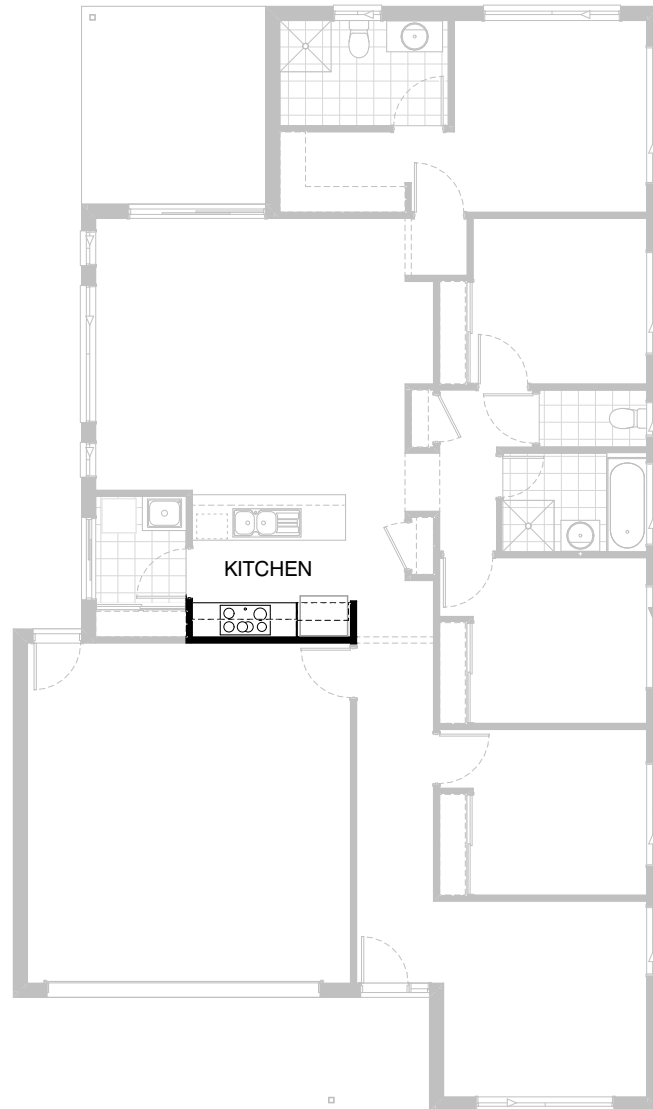
**FLOORPLAN OPTIONS**

We personalise our floorplans. Talk to us about our huge range of ready-to-go design options.

Listed details based on Traditional facade floorplan (illustrated)

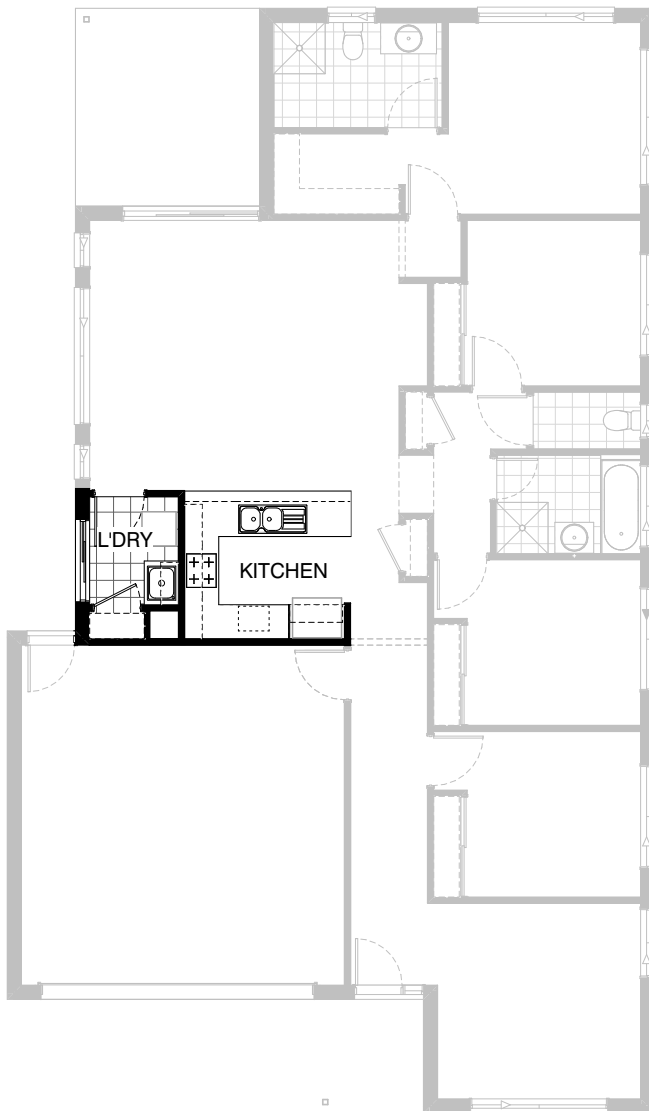
\*Copyright conditions. All photos and illustrations are representative only. Floor plans and specifications may be varied by Burbank without notice, the dimensions are diagrammatic only and a Building Contract with final drawings will display correct dimensions and detail. All designs are the property of Burbank and must not be used, reproduced, copied or varied, wholly or in part without written permission from an authorised Burbank representative. Copyright Burbank Australia (QLD) Pty Ltd. ABN 77 103 014 615. QBCC 1046544.

**Call 13 BURBANK**  
**Visit [burbank.com.au](http://burbank.com.au)**



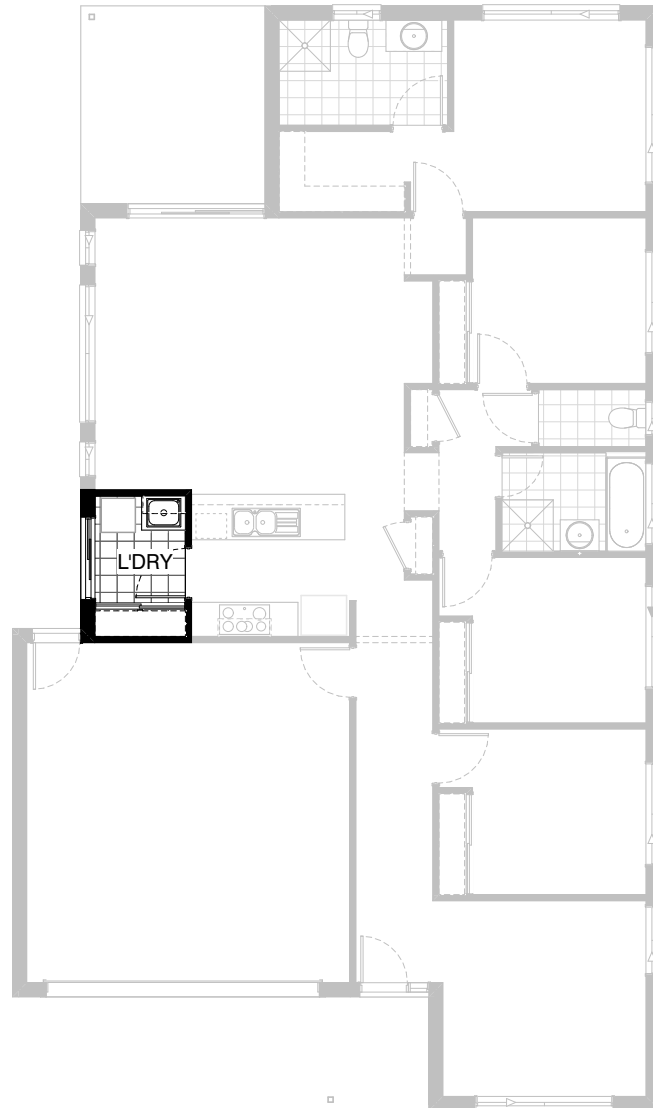
## Option Kitchen01

Provide Kitchen upgrade option, including:  
1No. 900mm open shelf over Ref space,  
2No. 450mm overhead cupboards either side of rangehood.



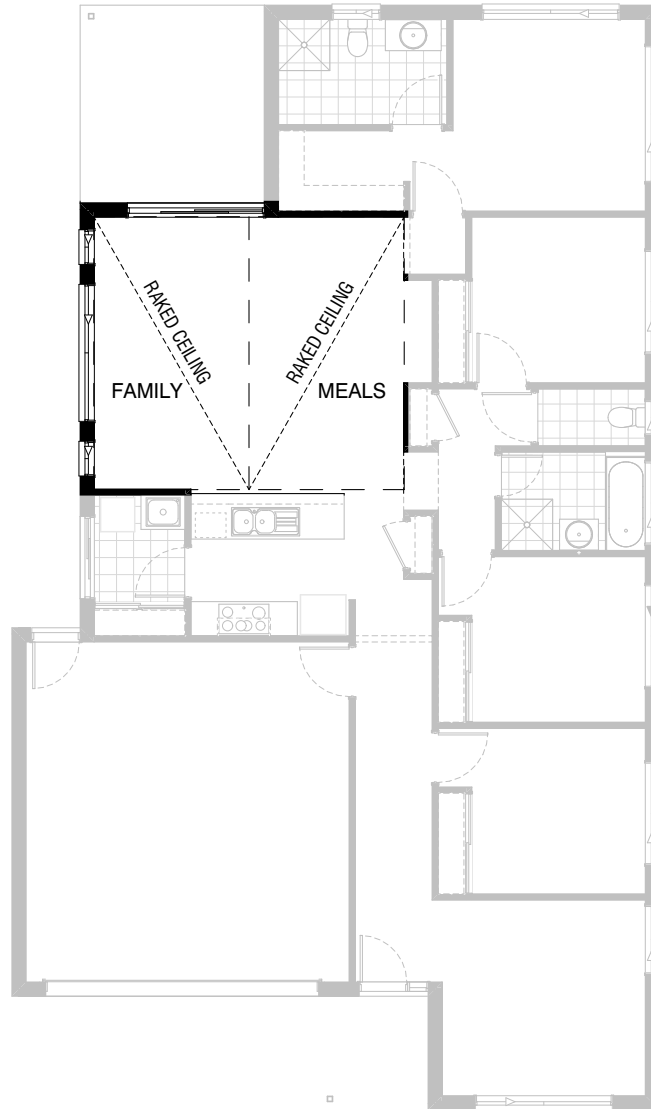
### Option Kitchen02

Provide U-shaped Kitchen upgrade option, including:  
 additional benchtop and tiled splashback,  
 900mm retractable rangehood,  
 600mm under bench oven and cooktop,  
 1No. dishwasher provision,  
 1No. microwave provision with pot drawer beneath,  
 1No. 450mm drawer unit,  
 1No. 900mm base cupboard,  
 2No. 900mm corner base cupboards with bi-fold doors,  
 1No. 300mm base cupboard,  
 2No. 700mm overhead cupboards,  
 1No. 930mm open shelf over Ref space.  
 870mm hinged door entry to Laundry moves to Meals as shown.  
 Provide Laundry upgrade option including:  
 stainless steel trough,  
 1No. 700mm base cupboard,  
 1No. 700mm overhead cupboard.  
 additional tiled splashback and benchtop to suit.  
 Linen cupboard decreases in size with additional  
 820mm hinged door in lieu of sliding doors.



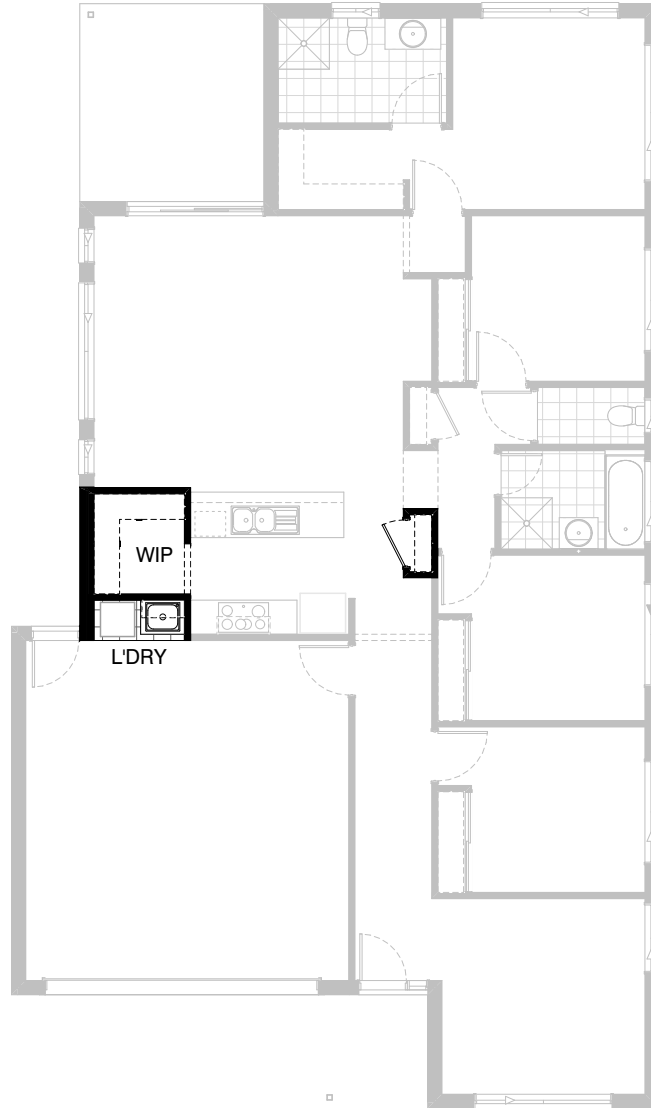
## Option Laundry01

Provide Laundry upgrade option including:  
1No. 700mm base cupboard,  
1No. 700mm overhead cupboard,  
additional tiled splashback to suit.



## Option Internal01

Provide raked ceiling (including square set cornice)  
with internal ridge to Meals & Family.



## Option Internal02

Provide floor plan option converting existing Laundry into Walk-in Pantry with 4No. 450mm shelves.  
Provide smaller open Laundry space facing Garage including:  
stainless steel trough,  
1No. 700mm base cupboard,  
1No. 700mm overhead cupboard.  
Existing Pantry becomes Linen closet. Remove 870mm hinged door and replace with bulkhead.  
Remove 2110mm x 1450mm aluminium sliding door.