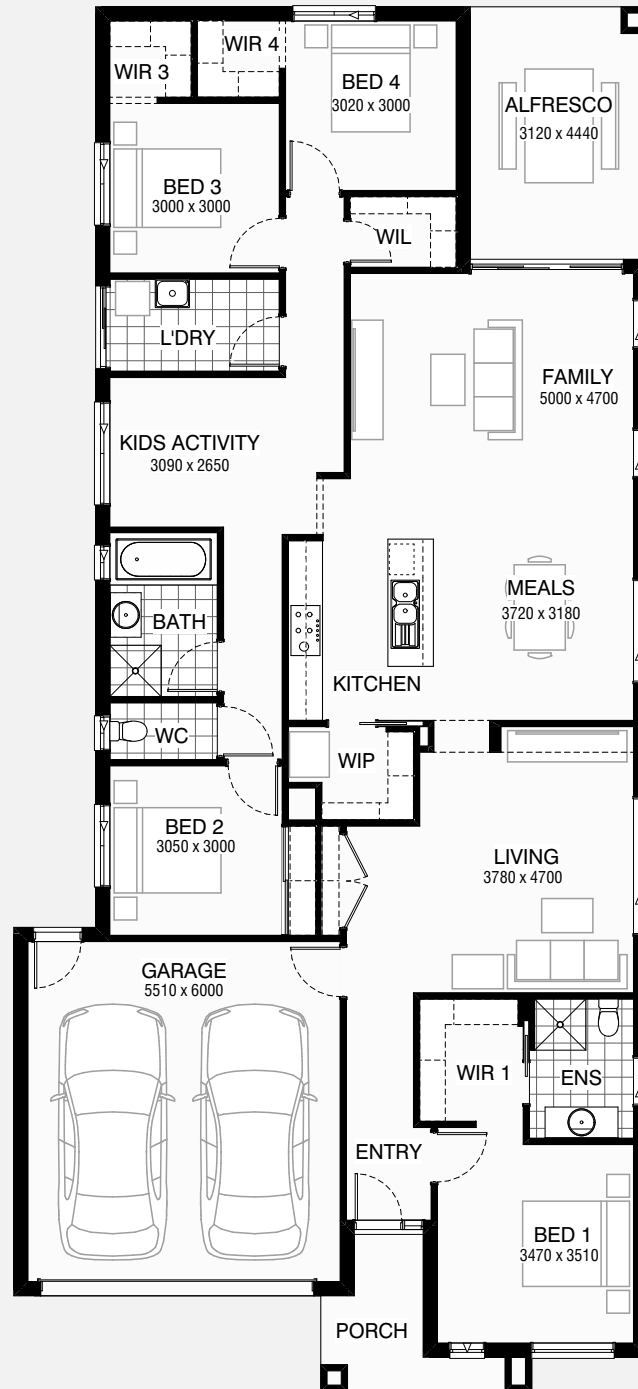


# KENWOOD 239

🏠 4 🚗 2 🚗 2

Total squares 25.6sq



**B**  
SERIES

Minimum  
Lot Width  
**12.5m**

Minimum  
Lot Length  
**32.0m**

**Design Dimensions**  
11,150mm(W) x 24,350mm(L),

**Facade Choices**  
Brentwood, Glendale, Inglewood,  
Malibu, Northridge, Pasadena, Santa Monica.  
Details based on Inglewood façade floorplan (illustrated)

#### DESIGN DIMENSIONS

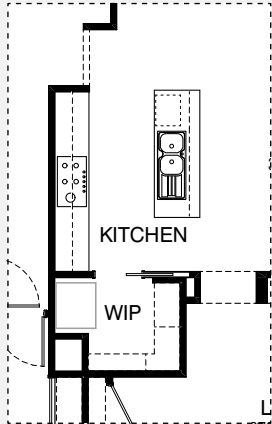
Residence	182.1m <sup>2</sup>	19.6sq
Garage	36.5m <sup>2</sup>	3.9sq
Porch	5.5m <sup>2</sup>	0.6sq
Alfresco	13.9m <sup>2</sup>	1.5sq
<b>Total</b>	<b>237.9m<sup>2</sup></b>	<b>25.6sq</b>

**Burbank**

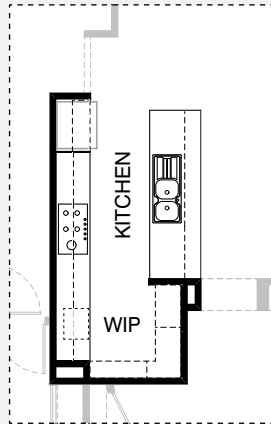
\*Copyright conditions. All photos and illustrations are representative only. Floor plans and specifications may be varied by Burbank without notice, the dimensions are diagrammatic only and a Building Contract with final drawings will display correct dimensions and detail. All designs are the property of Burbank and must not be used, reproduced, copied or varied, wholly or in part without written permission from an authorised Burbank representative. Copyright Burbank Australia Pty Ltd. ABN 91 007 099 872. Builders Registration Number CDB-U-52603.



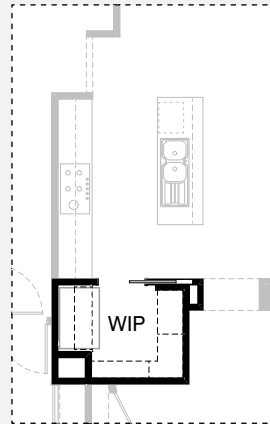
## KITCHEN OPTIONS



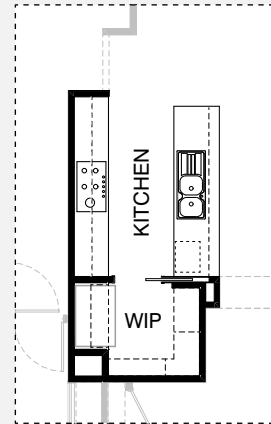
Master Kitchen Design



K1

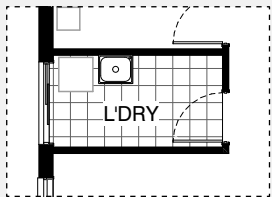


K2

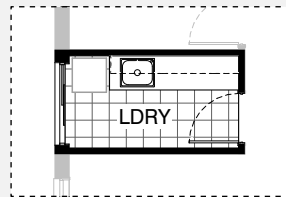


K3

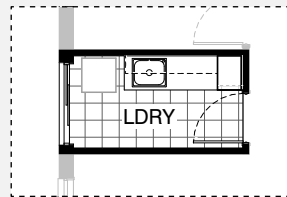
## LAUNDRY OPTION



Master Laundry Design

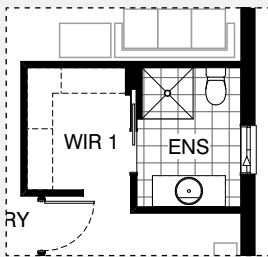


LD1

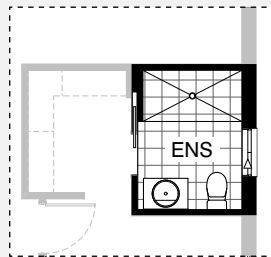


LD2

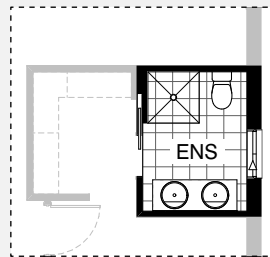
## ENSUITE OPTIONS



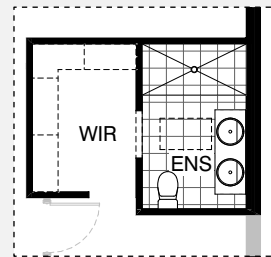
Master Ensuite Design



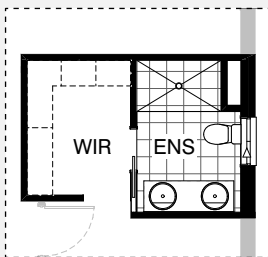
EN1



EN2



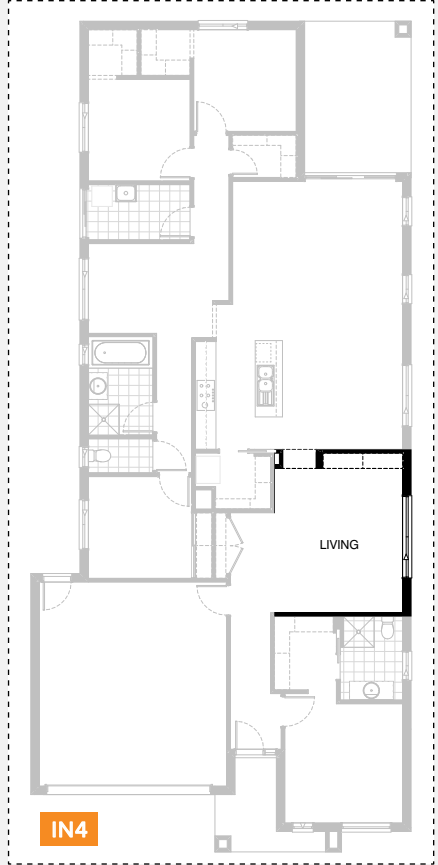
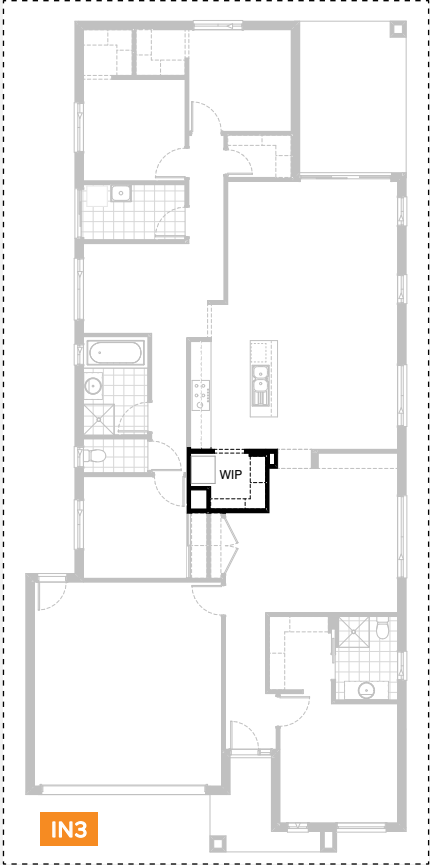
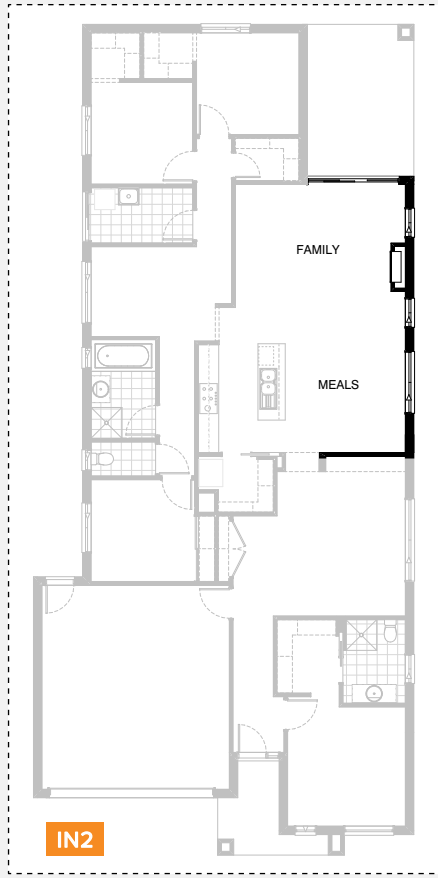
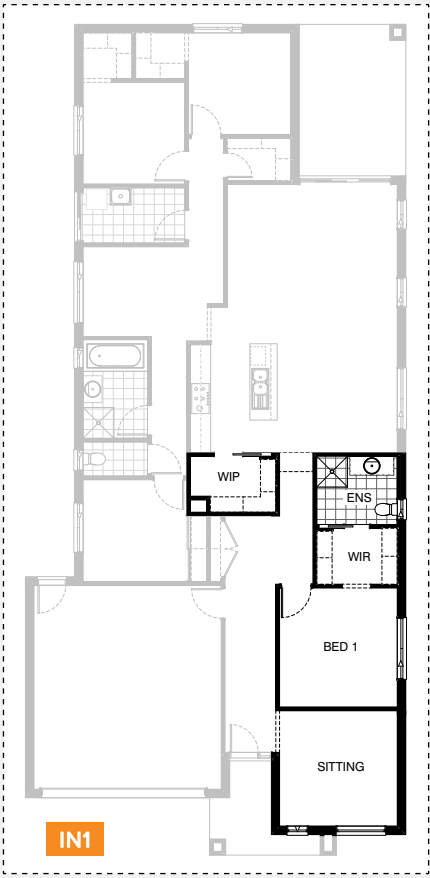
EN3



EN4

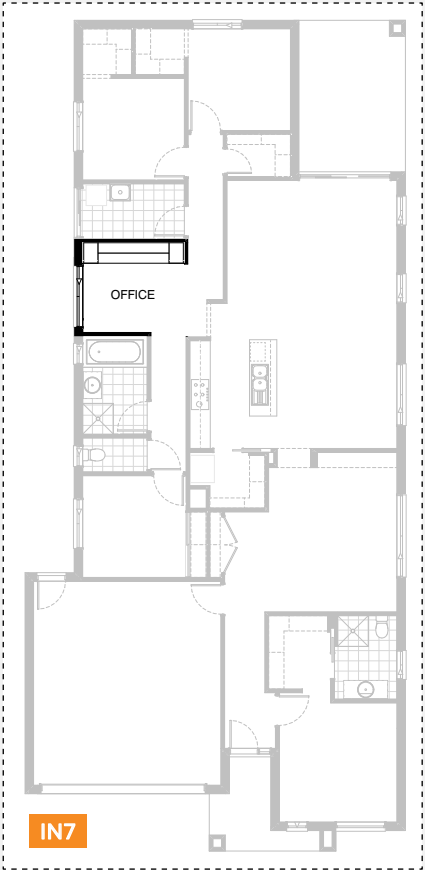
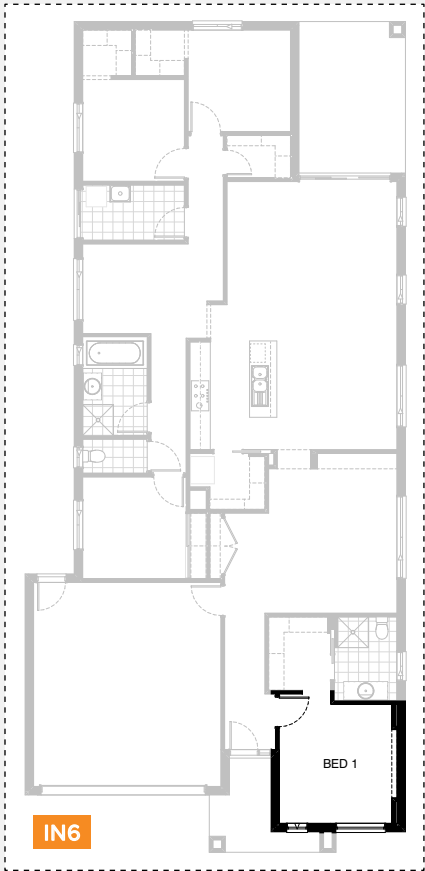
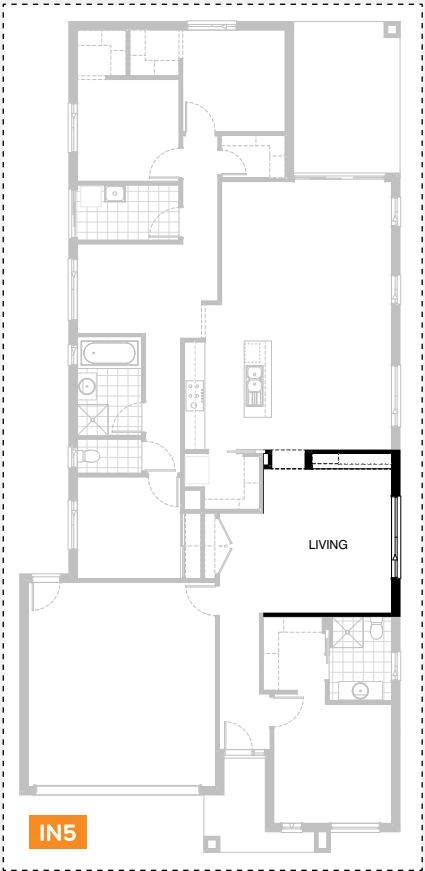
# KENWOOD 239

4 2 2

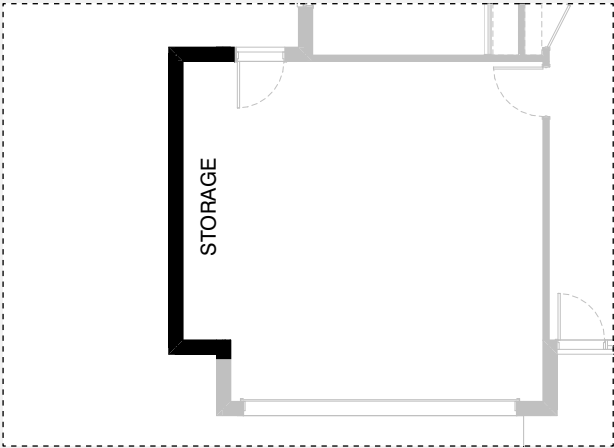


# KENWOOD 239

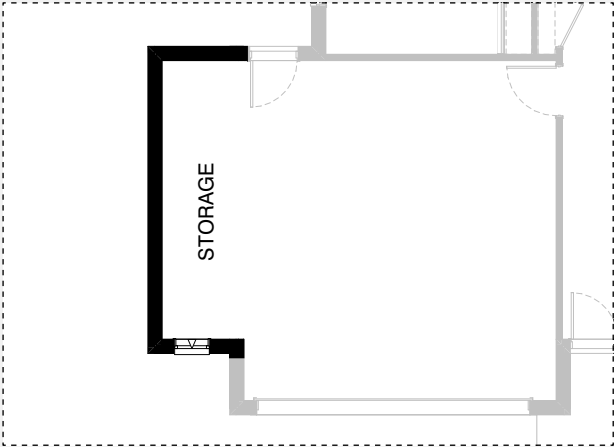
4 2 2



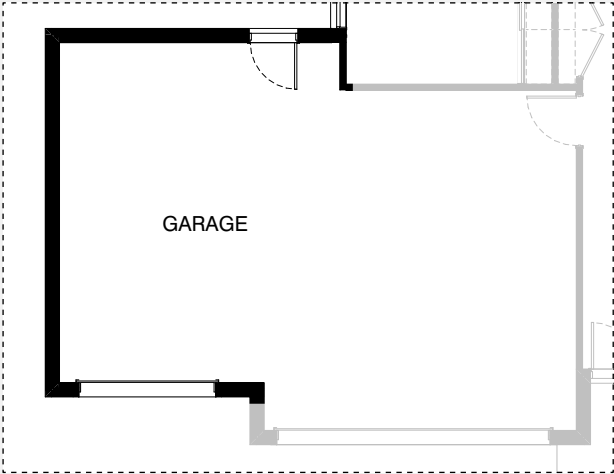
GARAGE OPTIONS



G1



G2



G3

# KENWOOD 239

## OPTION DESCRIPTIONS

### Kitchen Option 01

Provide Kitchen upgrade including removing wall between Kitchen and W.I.P and cavity sliding door. Relocate island bench against W.I.P wall and provide 2No. 900mm base cabinets, 1No. 610mm DW. provision and 1No. 450mm drawers in lieu of standard. Reduce void in W.I.P and relocate refrigerator space to other end of Kitchen bench. Extend Kitchen bench to include 1No. 300mm base cabinet, 2No. 900mm base cabinets and 632mm MW. provision. Provide 3No. 900mm overhead cabinet and open shelf above refrigerator space.

### Kitchen Option 02

Provide Kitchen Upgrade with laminated open shelf to above refrigerator space

### Kitchen Option 03

Provide Kitchen upgrade with 1No. laminated MW. provision with pot drawer below, 1No. 900mm base cabinet, 3No. 300mm base cabinets, DW. provision, 1No. 450mm four drawer bank, 2No. 800mm base cabinets, 2No. 300mm overhead cabinets, 2No. 800mm overhead cabinets, 900mm retractable rangehood in overhead cabinet, 900mm cooktop and 900mm underbench oven. Provide 1100mm open shelf above fridge space and additional benchtop and tiled splashback to suit.

### Laundry Option 01

Provide Laundry upgrade with laminated inset trough, 2No. 900mm base cabinets, 1No. 400mm base cabinet, 2No. 900mm overhead cabinets, 1No. 400mm overhead cabinet and additional tiled splashback and bench top to suit.

### Laundry Option 02

Provide Laundry Upgrade to include 400mm broom cabinet, 2No. 800mm base cabinets and 2No. 800mm overhead cabinets.

### Ensuite Option 01

Provide Ensuite Option with wall to wall tiled shower base in lieu of 1No. 900mm x 900mm tiled shower base and 1No. 782mm vanity unit in lieu of standard 1No. 1282mm wide vanity unit.

### Ensuite Option 02

Provide Ensuite Upgrade by providing 900mm x 900mm tiled shower in lieu of standard. Provide 1482mm wide vanity with double basins.

### Ensuite Option 03

Provide Ensuite upgrade to include wall to wall tiled shower in lieu of standard. Delete nib stud wall in Ensuite. Provide 1482mm wide vanity with double basins and reduce Living by 450mm to make ensuite & W.I.R larger. Delete window in Ensuite and provide fixed Velux skylight 550mm x 980mm. Relocate Living room window 120mm towards rear of house.

### Ensuite Option 04

Provide Ensuite Option with 1No. 1500mm x 900mm tiled shower base in lieu of standard, 1No. 1582mm wide vanity unit with 2No. basins and drawer unit. 1No. 1027mm x 850mm aluminium sliding window in lieu of standard. Increase Ensuite and W.I.R length by 220mm and reduce Living accordingly.

### Internal Option 01

Provide Sitting area and relocate Bedroom 1, W.I.R and Ensuite in lieu of Living, delete 1No. 1800mm x 850mm sliding window to Ensuite and provide 1No. 1027mm x 610mm aluminium sliding window. Add 1No. 1800mm x 1810mm sliding window to Bed 1 and extend W.I.P width by 310mm to suit.

### Internal Option 02

Provide Real Flame Inspire 900mm gas fireplace, 400mm off floor level in a 1400mm x 420mm boxed out plaster wall with a 4 sided black fascia to Family room side wall including additional 2No. 1800mm x 850mm aluminium sliding windows in lieu of standard 1No. 514mm x 1810mm aluminium sliding window.

### Internal Option 03

Provide plaster bulkhead 900mm wide opening to W.I.P. in lieu of standard cavity sliding door.

### Internal Option 04

Provide 4No. 450mm wide x 32mm thick laminated shelves to Living alcove.

### Internal Option 05

Provide cabinet and shelving unit, 3No. 750mm wide base cabinets, 2No. 750mm wide overhead cabinets. 2No. open laminated shelves and 32mm thick laminated bench top.

### Internal Option 06

Provide 150mm plaster feature wall protrusion with a 500mm deep plastered bulkhead.

### Internal Option 07

Provide home office in lieu of kids area including in-built cabinetry: 2No. 450mm floating drawers, 2No. 400mm full height cabinets, 600mm deep laminate benchtop and 2No. 60mm x 300mm deep overhead shelves. Relocate office window to suit.

### Garage Option 01

Provide extension to Garage to create additional Storage area. Increases area by 4.54m<sup>2</sup>. Increases width by 840mm.

### Garage Option 02

Provide extension to Garage to create Storage area including additional 2057mm x 610mm aluminium awing window. Increases area by 7.78m<sup>2</sup>. Increases width by 1440mm.

### Garage Option 03

Provide triple car garage including additional garage door as per colour selection. Increases area by 24.54m<sup>2</sup>. Increases width by 3600mm.

