

VIEWCREST 287

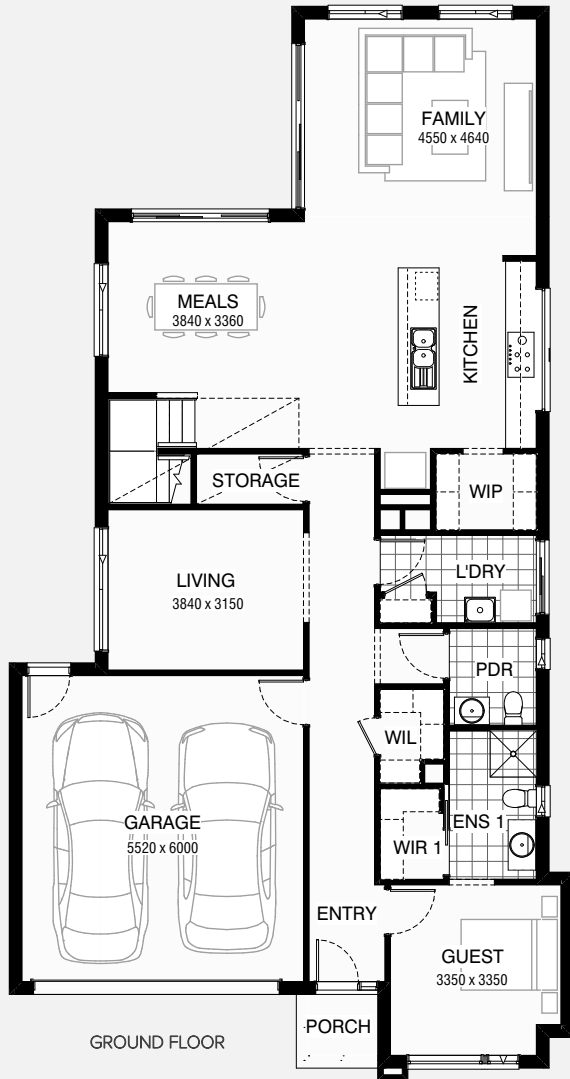
🏠 4 🚗 3.5 🚗 2

Total squares 31.0sq



Minimum Lot Width
12.5m

Minimum Lot Length
28.0m



GROUND FLOOR



FIRST FLOOR

Design Dimensions
11,030mm(W) x 20,990mm(L).

Facade Choices
Fullerton, Huntington, Moorpark,
Oakwood, Pallsades, Redlands, Riverside.
Details based on Riverside façade floorplan (illustrated)

DESIGN DIMENSIONS

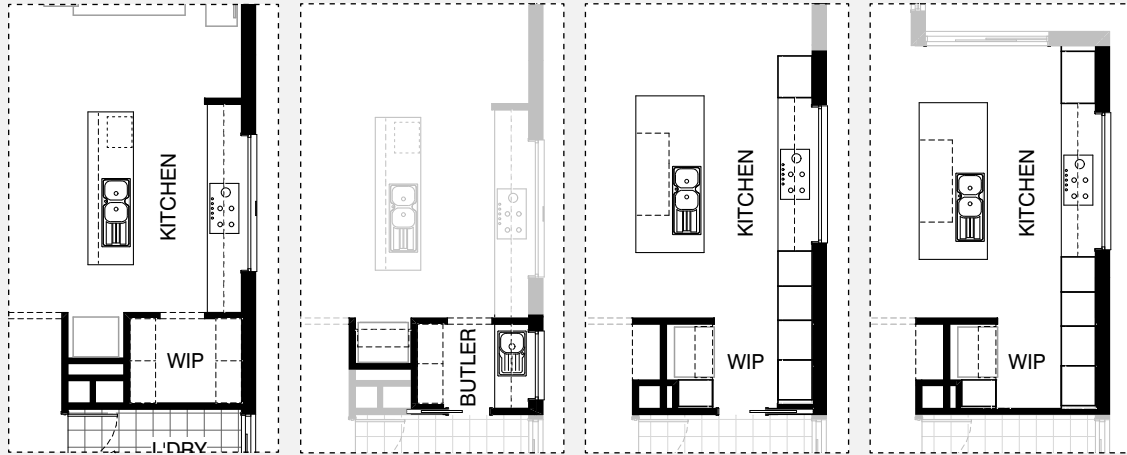
Residence	249.1m ²	26.9sq
Garage	36.3m ²	3.9sq
Porch	2.3m ²	0.2sq
Total	287.7m²	31.0sq



*Copyright conditions. All photos and illustrations are representative only. Floor plans and specifications may be varied by Burbank without notice, the dimensions are diagrammatic only and a Building Contract with final drawings will display correct dimensions and detail. All designs are the property of Burbank and must not be used, reproduced, copied or varied, wholly or in part without written permission from an authorised Burbank representative. Copyright Burbank Australia Pty Ltd. ABN 91 007 099 872. Builders Registration Number CDB-U-52603.



KITCHEN OPTIONS



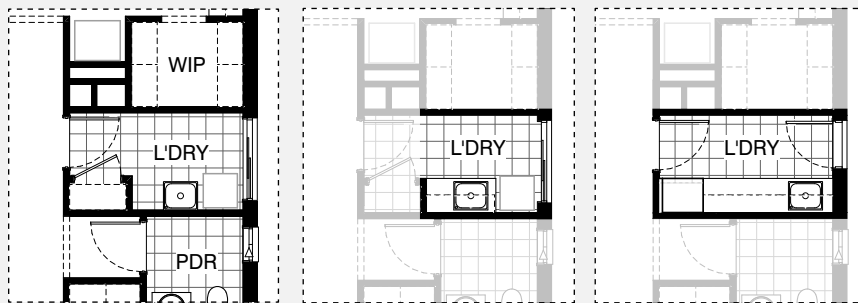
Master Kitchen Design

K01

K02

K03

LAUNDRY OPTIONS

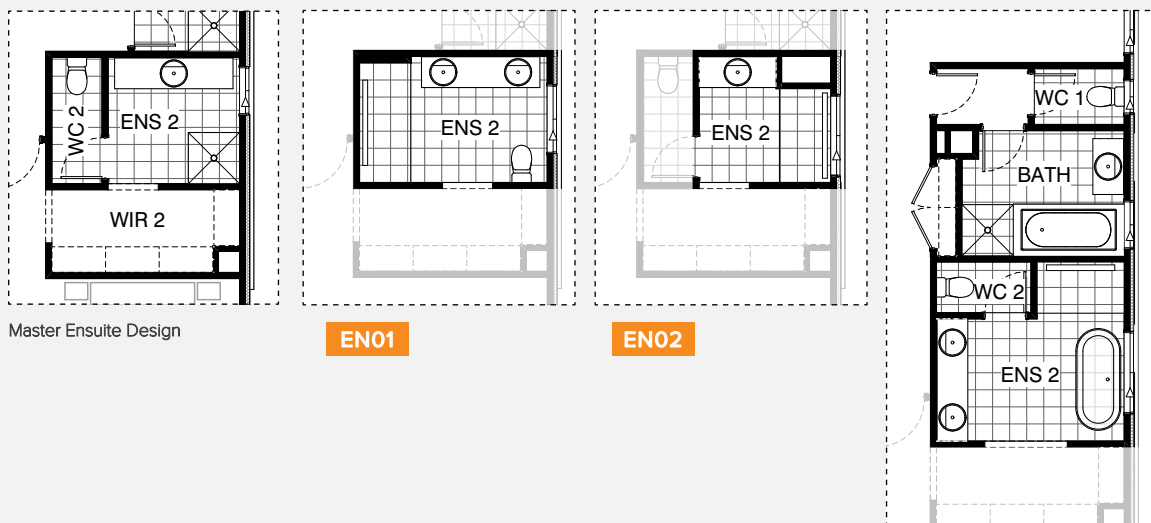


Master Laundry Design

LD01

LD02

ENSUITE OPTIONS



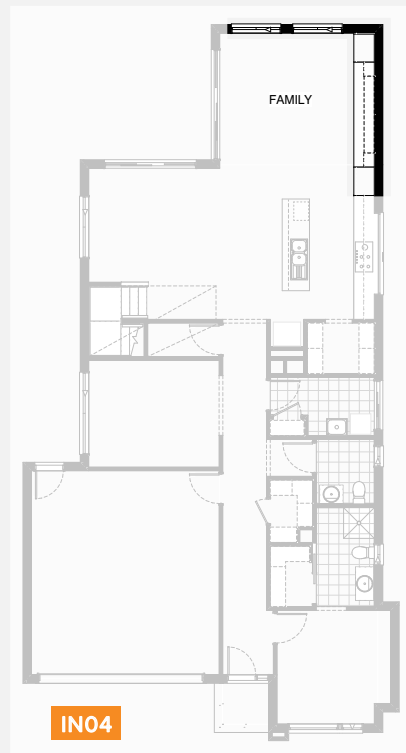
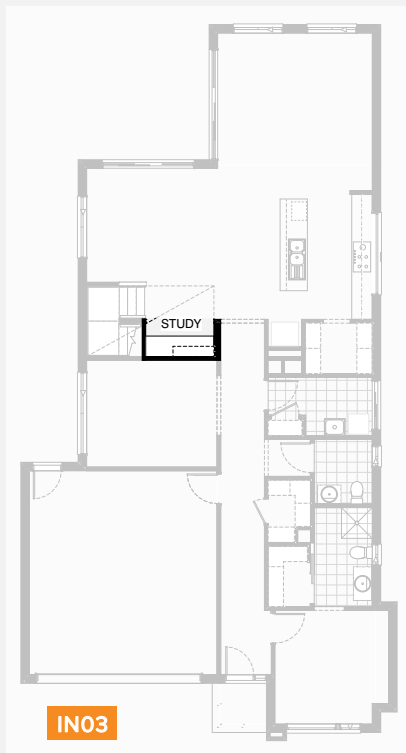
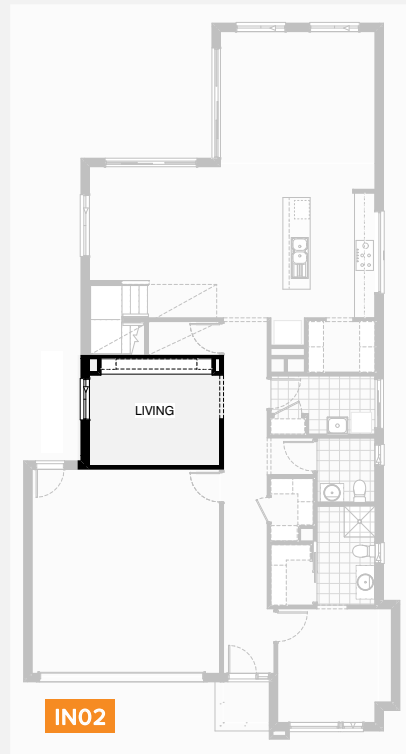
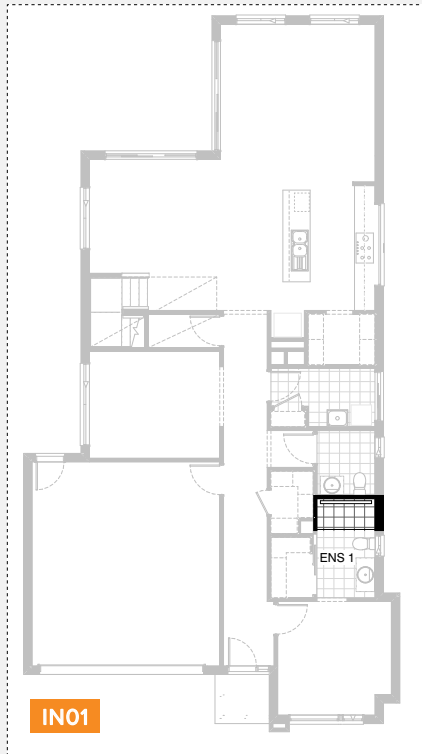
Master Ensuite Design

EN01

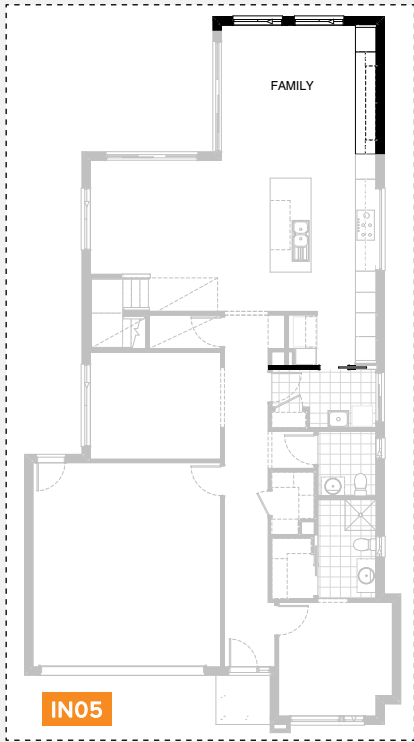
EN02

EN03

INTERNAL OPTIONS



INTERNAL OPTIONS

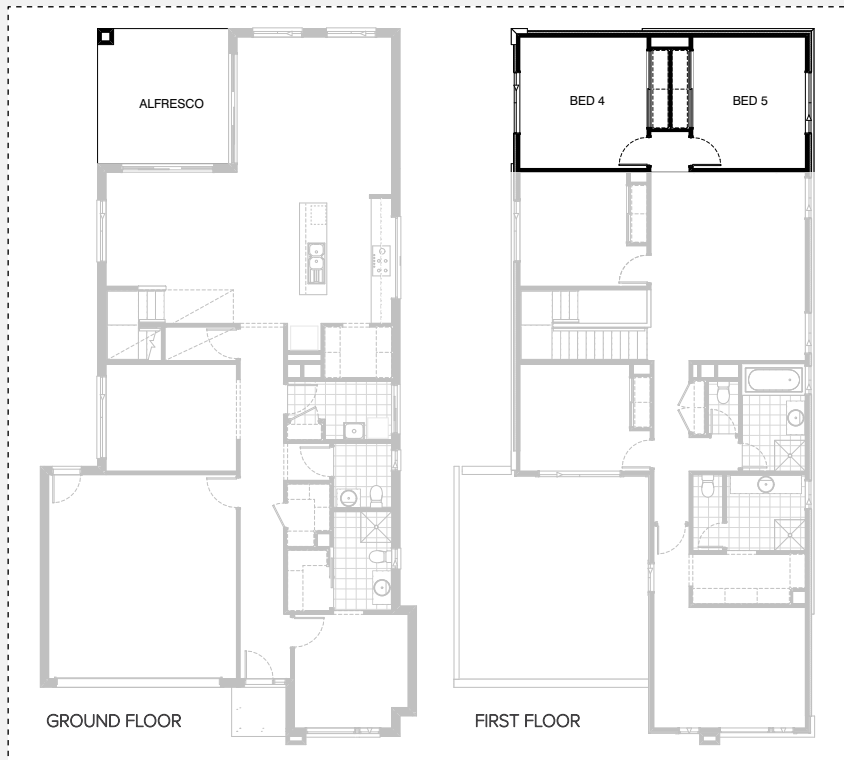




INTERNAL OPTIONS

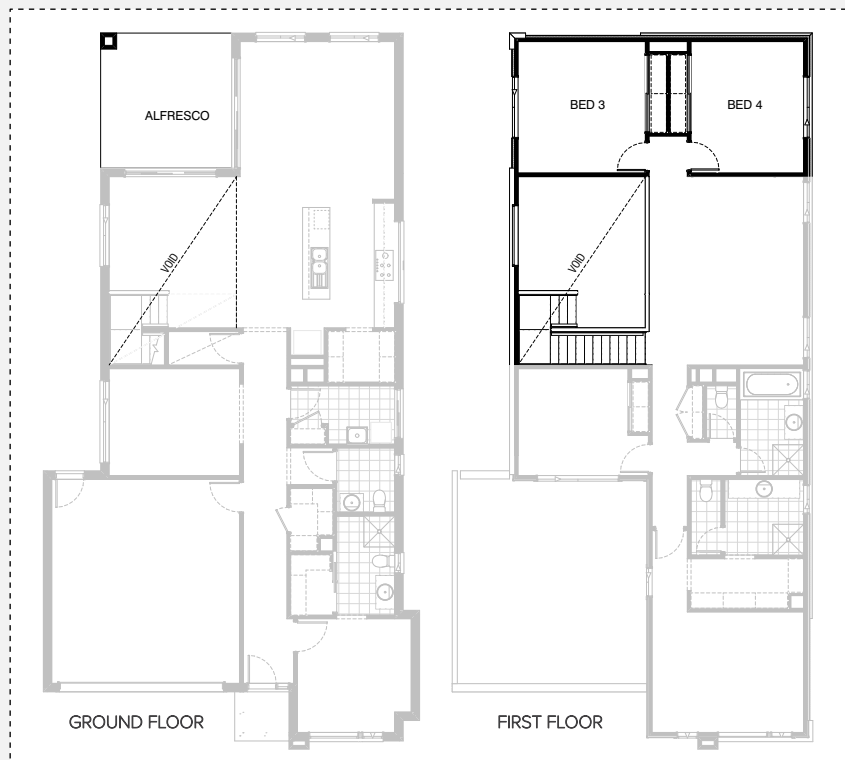


IN07

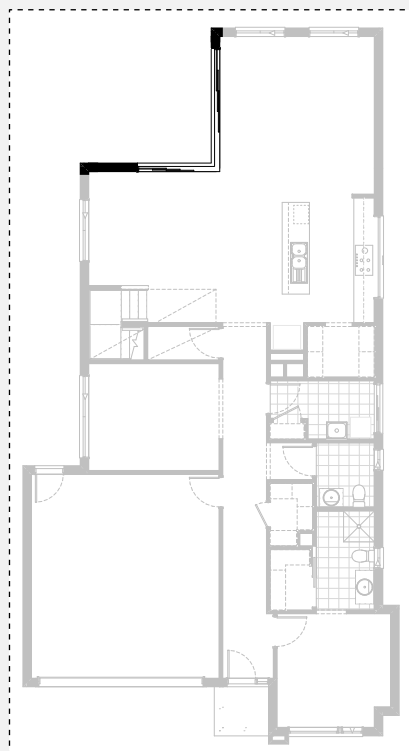


IN08

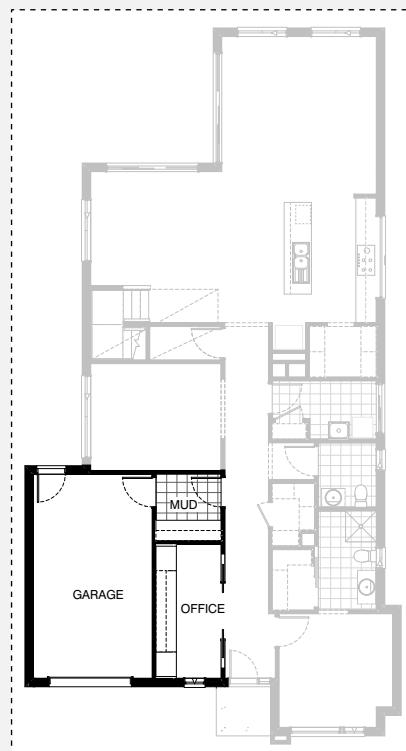
INTERNAL OPTIONS



IN09



IN10

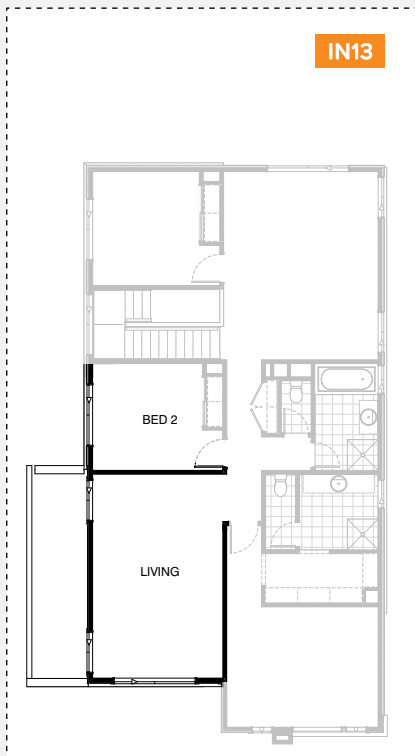


IN11

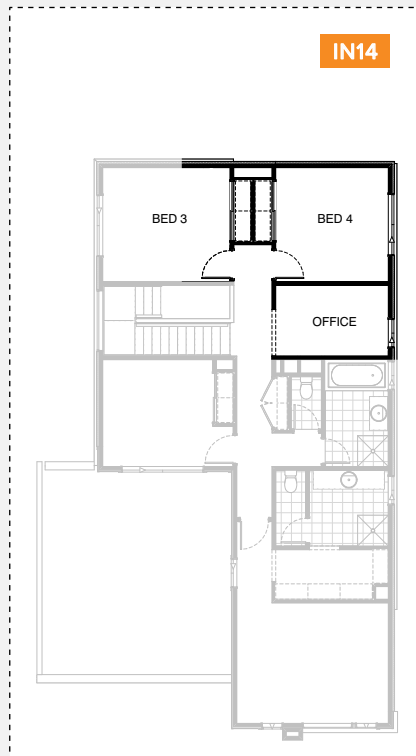
INTERNAL OPTIONS



IN12

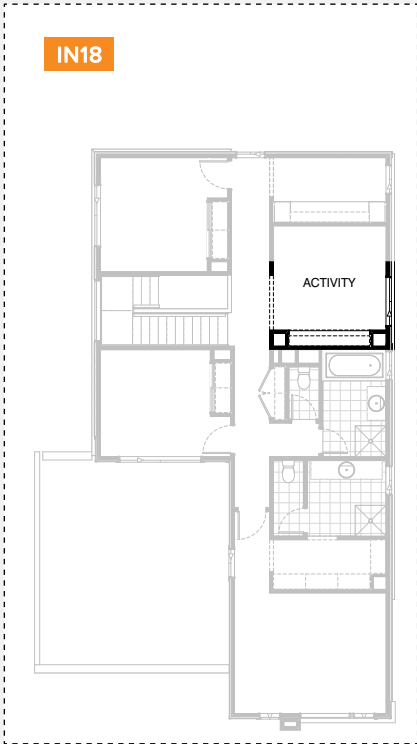
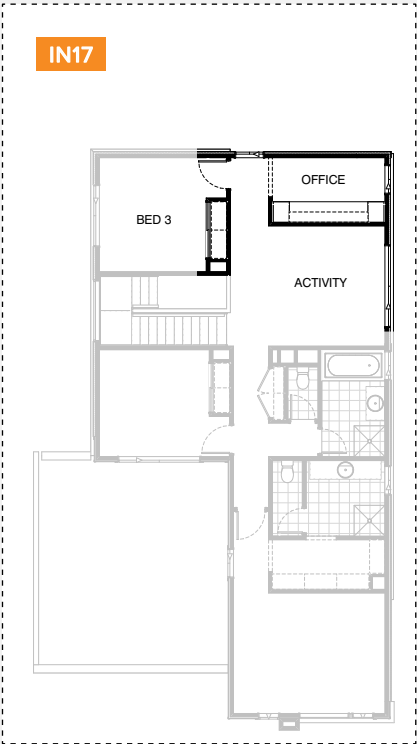
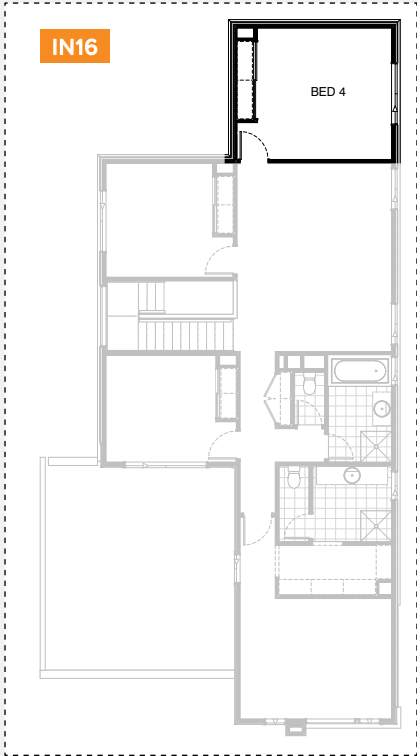
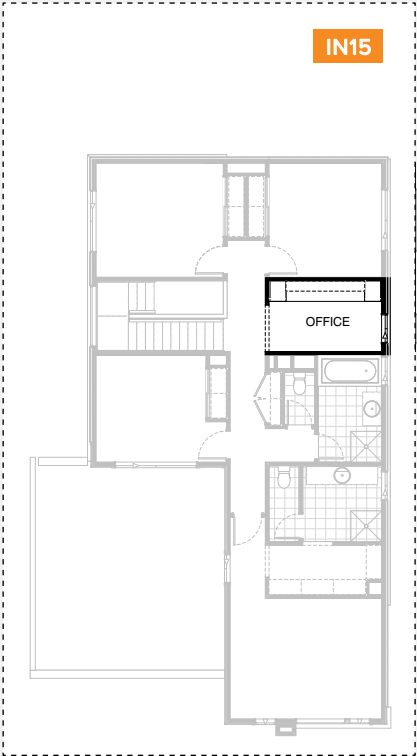


IN13

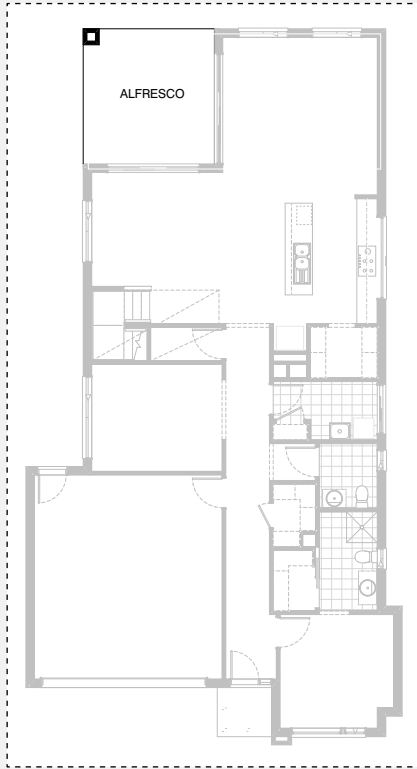


IN14

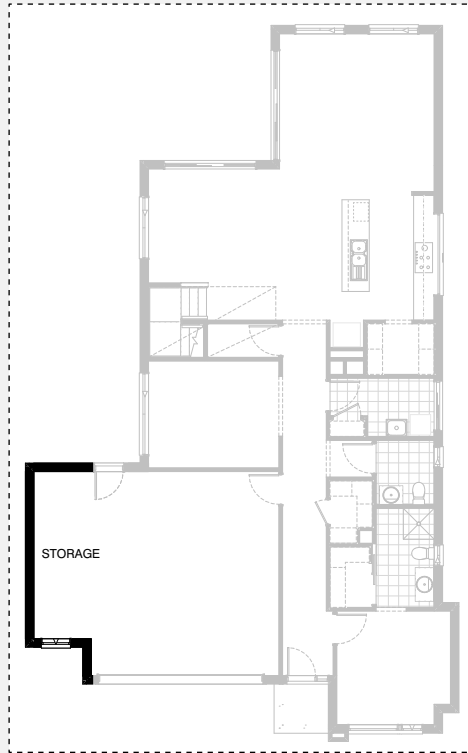
INTERNAL OPTIONS



INTERNAL OPTIONS



EX01



G01



VIEWCREST 287

OPTION DESCRIPTIONS

Kitchen Option 01

Provide Butler's Pantry in-lieu of Walk-in Pantry, including: 20mm stone benchtop, single bowl sink, 1No. 900mm base cupboard, 1No. 450mm base cupboard, 1No. 900mm overhead cupboard, 1No. 450mm overhead cupboard, 1No. open shelf over Ref space, 1No. 720mm cavity sliding door through to Laundry, additional 514mm x 1210mm Aluminium fixed window.

Kitchen Option 02

Provide Kitchen upgrade option with 1200mm deep 20mm thick stone island bench and relocated Ref space, including:
1No. 900mm retractable rangehood, 1No. 450mm drawer unit, 1No. dishwasher provision, 4No. 900mm base cupboards, 1No. 700mm base cupboard, 2No. 600mm base cupboards facing Meals, 2No. 900mm overhead cupboards, 2No. 600mm oven towers with microwave provisions, 1No. open shelf over Ref space, 3No. 700mm full height laminate cupboards, 1No. 450mm full height laminate cupboard beside Ref space, 1No. cavity sliding door through to Laundry. Provide Nook facing Passage with bulkhead over.

Kitchen Option 03

Provide Kitchen upgrade option with 1200mm deep 20mm thick stone island bench and relocated Ref space, including:
1No. 900mm retractable rangehood, 1No. 450mm drawer unit, 1No. dishwasher provision, 4No. 900mm base cupboards, 1No. 700mm base cupboard, 2No. 600mm base cupboards facing Meals, 2No. 900mm overhead cupboards, 2No. 600mm oven towers with microwave provisions, 1No. open shelf over Ref space, 2No. 700mm full height laminate cupboards, 1No. 900mm full height laminate cupboard, 1No. 450mm full height laminate cupboard beside Ref space,
Note: option only available with Options Internal06 and Internal12.

Ensuite Option 01

Provide Ensuite upgrade option with re-arranged layout, including: 1No. 2082mm vanity with double basins, 2100mm x 900mm wall-to-wall tiled shower base, 1No. 1027mm x 1210mm Aluminium sliding window in-lieu of standard, Relocated WC.

Ensuite Option 02

Provide Ensuite upgrade option, including:
1No. 1282mm vanity, including 1 row tiling beneath mirror to suit wall to wall benchtop including returns 1650mm x 900mm wall-to-wall tiled shower base, 1No. 350mm x 1450mm Aluminium Sliding Window over shower in-lieu of standard.

Ensuite Option 03

Provide Ensuite upgrade option with re-arranged layout, including:
1No. 2082mm vanity with double basins, including 1 row tiling beneath mirror to suit wall-to-wall benchtop including returns, 1530mm x 900mm wall-to-wall tiled shower base, 1No. freestanding bath, 1No. 1200mm x 1450mm Aluminium sliding window in-lieu of standard, Enclosed WC with 720mm hinged door.
Note: Option rearranges layout of Bathroom and WC with additional 720mm hinged door, and takes 1090mm of width Activity with 2No. 1800mm x 850mm Aluminium sliding windows in-lieu of standard.

Laundry Option 01

Provide Laundry upgrade with laminate base and overhead cupboards and stainless steel inset trough, including:
1No. 800mm base cupboard, 1No. 350mm base cupboard, 1No. 800mm overhead cupboard, 1No. 350mm overhead cupboard, 32mm laminate benchtop and tiled splashback to suit.

Laundry Option 02

Provide Laundry upgrade with laminate base and overhead cupboards and stainless steel inset trough, including:
1No. 900mm base cupboard, 2No. 900mm overhead cupboards, 1No. 450mm overhead cupboard, 1No. 700mm full height laminate cupboard with 5No. 450mm shelves, 32mm laminate benchtop and tiled splashback to suit. Bench height increases to 950mm from FFL with open space beneath benchtop to store washer and dryer side-by-side. Provide 820mm hinged entry door in-lieu of standard sliding door. Remove plaster-lined Linen cupboard.

Internal Option 01

Provide upgrade option to Guest Ensuite, including: 1700mm x 900mm tiled shower base in-lieu of standard.

Internal Option 02

Provide built-in joinery to Living, including: 450mm deep 32mm thick laminate benchtop, 4No. 800mm TV units, 2No. 400mm open shelf units, 2No. 300mm deep 60mm thick open shelves over. Provide 2No. voids. Provide 2057mm x 1210mm Aluminium sliding window in-lieu of standard.

Internal Option 03

Provide Study Nook facing the Meals in-lieu of Storage area beneath Stair, with built-in joinery, including:
600mm deep 32mm thick laminate benchtop desk, 1No. 450mm wide drawer unit under desk, 2No. 300mm deep 60mm thick open shelves over desk.

Internal Option 04

Provide built-in joinery option to Family, including:
600mm deep 32mm thick benchtop, 2No. 800mm TV units, 2No. 700mm TV units, 2No. 800mm full height laminate cupboards, 2No. 400mm open shelf units, 2No. 300mm deep 60mm thick open shelves over.
Note: Remove stud and plaster-lined nib wall.

Internal Option 05

Provide built-in joinery option to Family, including:
600mm deep 32mm thick benchtop, 2No. 800mm TV units, 2No. 700mm TV units, 1No. 700mm full height laminate cupboard, 2No. 400mm open shelf units, 2No. 300mm deep 60mm thick open shelves over.
Note: Option only available with Option Kitchen02

Internal Option 06

Provide Void over Meals with relocated Bed 3 and additional Bed 4. Provide additional 820mm hinged door, built-in Robe with sliding doors and 450mm shelf with hanging rail, 1No. 1200mm x 1810mm Aluminium sliding window to Bed 3 & 4. Provide 1200mm x 1810mm Aluminium fixed window to new Void in-lieu of standard. Provide an extension to the dwarf wall balustrade. Provide mirrored Family/Alfresco, including:
2110mm x 2690mm Aluminium sliding door in-lieu of standard 2110mm x 2170mm Aluminium sliding door, 1200mm x 1210mm Aluminium fixed window in-lieu of 2No. 1200mm x 1450mm Aluminium sliding windows, additional 1800mm x 1810mm Aluminium sliding window, Provide plaster-lined Pantry with 720mm hinged door and 4No. 450mm shelves, Provide additional brick pier with structural concrete slab to new Alfresco.
Note: Include in pricing, 3No. 89x89mm steel posts with steel beams as designed by engineer.

Internal Option 07

Provide additional Guest bedroom by building over the Garage, including:
Ensuite with 1No. 782mm vanity with single basin, 1900mm x 900mm wall-to-wall tiled shower base, 1No. 350mm x 1450mm Aluminium sliding window over shower, 1No. WC, 1No. 820mm hinged door, 1No. 1200mm x 2410mm Aluminium sliding window to facade, 1No. built-in Robe with sliding doors and 450mm shelf with hanging rail. Provide 1200mm x 1810mm Aluminium sliding window to Bed 2 in-lieu of standard.
Note: Provide 2No. voids with bulkhead over to Living area on ground floor to act as plumbing stack.



VIEWCREST 287

OPTION DESCRIPTIONS

Internal Option 08

Provide Alfresco with additional brick pier and structural concrete slab. Adds 15.21m² to the ground floor area of the home.
Provide additional Beds 4 and 5 to first floor, including:
2No. additional 820mm hinged doors, built-in Robes with sliding doors and 450mm shelves with hanging rails, 2No. 1200mm x 1810mm Aluminium sliding windows.
Adds 33.94m² to the first floor area of the home.
Adds 49.15m² to the total area of the home.

Internal Option 09

Provide double-height Void over Meals with additional Alfresco. Provides additional brick pier with structural concrete slab to Alfresco Adds 15.21m² to the ground floor area of the home. Relocate Bed 3 and provide additional Bed 4, including hinged doors, built-in Robes with sliding doors and 450mm shelves with hanging rails, 2No. 1200mm x 1810mm Aluminium sliding windows.
Provide an extension to the dwarf wall balustrade as shown. Provide additional 1200mm x 1810mm Aluminium fixed window to new Void. Adds 33.94m² to the first floor area of the home.
Adds 49.15m² to the total area of the home.

Internal Option 10

Provide 2107mm -3610mm x 2410mm Aluminium corner stacker sliding door in-lieu of 2No. standard sliding doors.

Internal Option 11

Provide Home Office/Mud room option with Single car Garage in-lieu of Double Garage, including:
Tiled Mud room with 870mm hinged door, 600mm deep 32mm thick laminate benchtop 2No. 900mm base cupboards, 2No. 300mm deep 60mm thick open shelves over.
Home Office built-in joinery includes:
1No. 600mm deep 32mm thick laminate desk, 2No. 700mm full height laminate cupboards, 2No. 300mm deep 60mm thick open shelves over desk, 2No. 820mm bi-parting cavity sliding doors, 1No. 2057mm x 610mm Aluminium awning feature window. Provide 1No. 2410mm wide Garage door to new single Garage in-lieu of standard

Internal Option 12

Provide mirrored Family/Alfresco, including: 2110mm x 2690mm Aluminium sliding door in-lieu of standard 2110mm x 2170mm Aluminium sliding door, 1200mm x 1210 Aluminium fixed window in-lieu of 2No.1200mm x 1450mm Aluminium sliding windows, additional 1800mm x 1810mm Aluminium sliding window, Provide plaster-lined Pantry with 720mm hinged door and 4No. 450mm shelves, Provide additional brick pier with structural concrete slab to new Alfresco.
Provide additional Beds 4 and 5 to first floor, including:
2No. additional 820mm hinged doors, built-in Robes with sliding doors and 450mm shelves with hanging rails, 2No. ASW1218 sliding windows.
Adds 49.15m² to the total area of the home.

Internal Option 13

Provide Additional Living to first floor by building over the Garage, including:
2No. 1200mm x 1210mm Aluminium sliding windows 1No. 1200mm x 2410mm Aluminium sliding window in-lieu of standard, 1No. 1200mm x 1810 Aluminium sliding window to Bed 2.

Internal Option 14

Provide Bed 4 and Home Office in-lieu of Activity, including:
Additional built in Robe with sliding doors and 450mm shelf with hanging rail, 1No. 820mm hinged door, 1No. 1200mm x 1810mm Aluminium sliding window to Bed 4, 1No. 1800mm x 850mm Aluminium sliding window to new Office.
Note: Size of Bed 3 increases by 600mm.

Internal Option 15

Provide built-in joinery to Home Office, including: 600mm deep 32mm thick laminate benchtop desk, 2No. 450mm full height laminate cupboards, 2No. 300mm deep 60mm thick open shelves over desk.
Note: option only available with Option Internal14

Internal Option 16

Provide Bed 4 above Family in-lieu of tiled roof, including: Additional 820mm hinged door, built-in Robe with sliding doors and 450mm shelf with hanging rail, 1No.1200mm x 1810mm Aluminium sliding window.

Internal Option 17

Provide Home Office and reduce Activity. Provide built-in joinery to new Home Office, including:
600mm deep 32mm thick laminate benchtop desk, 2No. 450mm full height laminate cupboards, 2No. 300mm deep 60mm thick open shelves over.
Provide 1200mm x 2410mm Aluminium sliding window to Activity in-lieu of standard.
Provide 1200mm x 850mm Aluminium sliding window and 1800mm x 850mm Aluminium sliding window.
Option also flips the hinged door and built-in Robe to Bed 3 as shown.

Internal Option 18

Provide built-in joinery to Activity to first floor, including: 450mm deep 32mm thick benchtop,
2No. 800mm T.V units,
1No. 700mm T.V unit,
2No. 300mm deep 60mm thick open shelves over, 2No. plaster-lined voids with bulkhead over. Provide 2057mm x 1450mm Aluminium sliding window in-lieu of 1200mm x 2410mm Aluminium sliding window. Note:
Option only available with option Internal17

External Option 01

Provide Alfresco with additional brick pier, structural concrete slab and extended tiled roof over. Adds 15.21m² to the total floor area of the home.

Garage Option 01

Provide extension to Garage to create additional Storage area including additional 2057mm x 850mm Aluminium awning feature window. Increases width of the home by 1680mm. Increases area of the home by 9.07m²

