

<b>Facades available:</b>	
Coastal, Delta, Kingston, Nouveau	
Salisbury, Traditional, York	
<b>Overall home width</b>	<b>11.27m</b>
<b>Overall home length</b>	<b>20.87m</b>

Residence	151.6m <sup>2</sup>	16.3sq
Garage	37.4m <sup>2</sup>	4.0sq
Porch	3.2m <sup>2</sup>	0.4sq
Alfresco	12.1m <sup>2</sup>	1.3sq
<b>Total</b>	<b>204.3m<sup>2</sup></b>	<b>22.0sq</b>

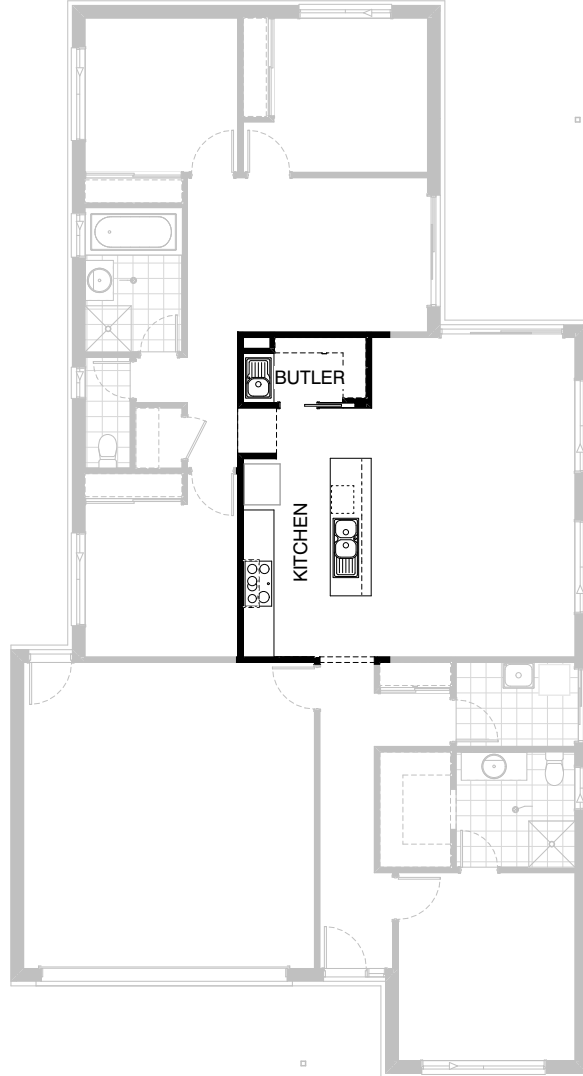
**FLOORPLAN OPTIONS**

We personalise our floorplans. Talk to us about our huge range of ready-to-go design options.

Listed details based on Traditional facade floorplan (illustrated)

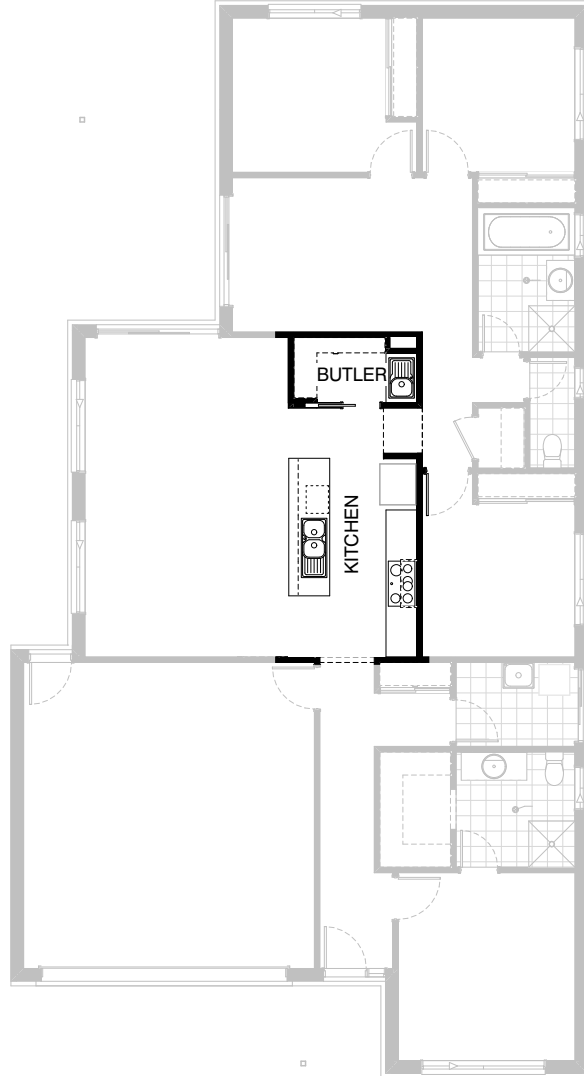
\*Copyright conditions. All photos and illustrations are representative only. Floor plans and specifications may be varied by Burbank without notice, the dimensions are diagrammatic only and a Building Contract with final drawings will display correct dimensions and detail. All designs are the property of Burbank and must not be used, reproduced, copied or varied, wholly or in part without written permission from an authorised Burbank representative. Copyright Burbank Australia (QLD) Pty Ltd. ABN 77 103 014 615. QBCC 1046544.

**Call 13 BURBANK**  
**Visit [burbank.com.au](http://burbank.com.au)**



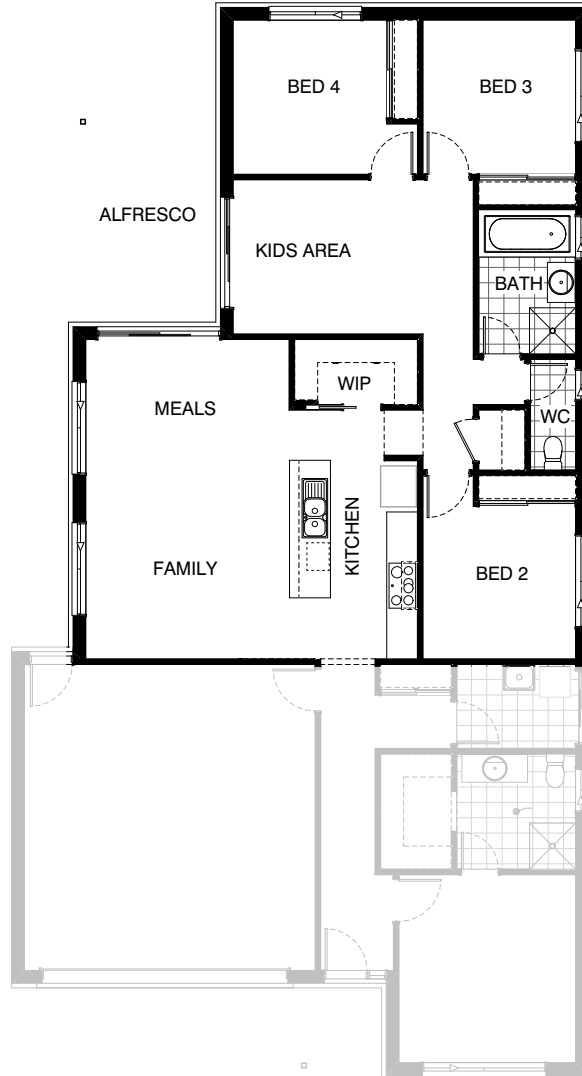
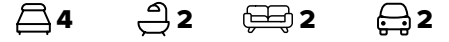
### Option Kitchen01

Provide Butler's Pantry option which moves pantry to other side of kitchen.  
New kitchen includes 900mm retractable rangehood,  
900mm electric cooktop, 900mm under bench oven, 450mm drawer unit,  
dishwasher provision, microwave provision with pot drawer,  
1No. 900mm base cupboard,  
2No. 600mm base cupboards,  
2No. 350mm base cupboards.  
Butler's Pantry includes additional laminated benchtop,  
900mm base cupboard, single bowl sink,  
4No. 300mm shelves,  
4No. 450mm shelves,  
720mm cavity sliding door, additional tiled splashback to suit



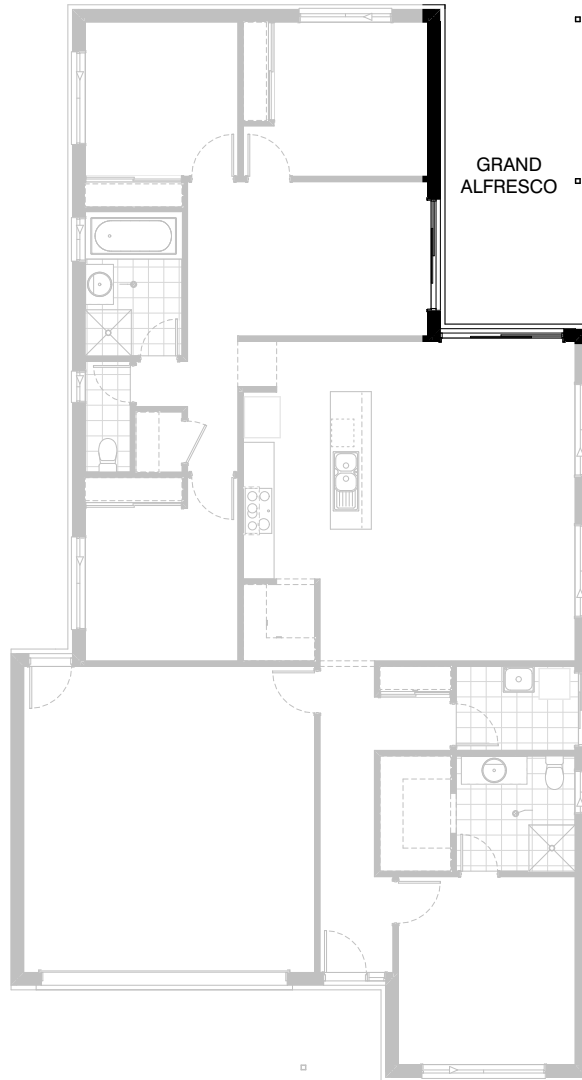
### Option Kitchen02

Provide Butler's Pantry in conjunction with option External01.  
New Butler's Pantry includes additional laminated benchtop,  
900mm base cupboard, single bowl sink,  
4No. 300mm shelves, 4No. 450mm shelves,  
720mm cavity sliding door, additional tiled splashback to suit



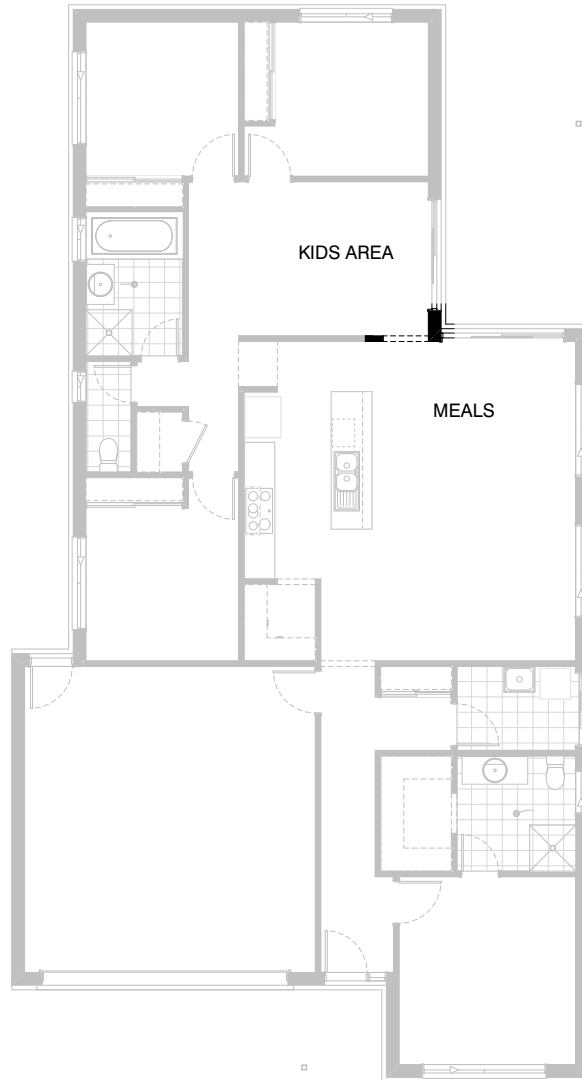
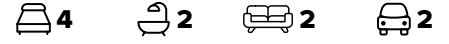
### Option External01

Provide mirrored rear section of the home. New kitchen includes 900mm retractable rangehood, 900mm electric cooktop, 900mm under bench oven, 450mm drawer unit, dishwasher provision, microwave provision with pot drawer,  
 1No. 900mm base cupboard,  
 2No. 600mm base cupboards,  
 2No. 350mm base cupboards.  
 New Walk-in Pantry includes additional 4No. 450mm shelves and 720mm cavity sliding door.



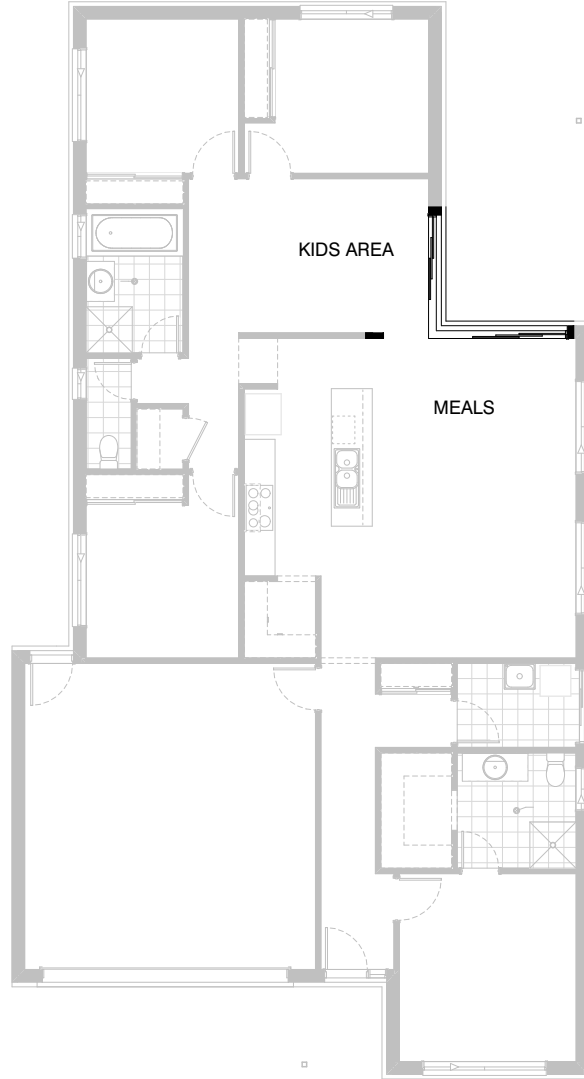
### Option External02

Provide Grand Alfresco option with additional light point,  
1No. 88x88 painted timber post and tiled roof above.  
Option adds 5.88m<sup>2</sup> to the overall house area



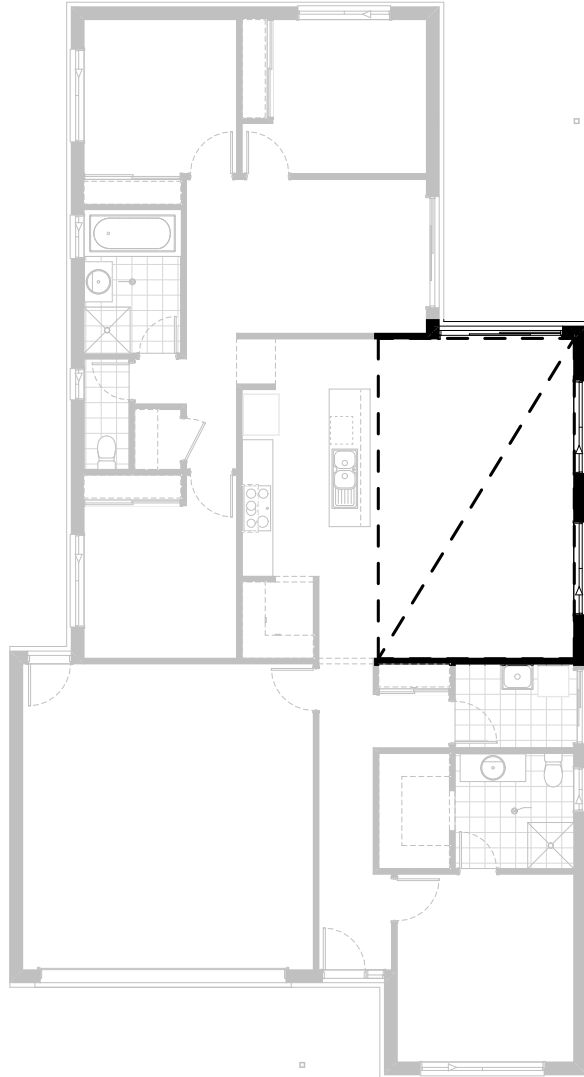
### Option Internal01

Provide option with 900mm wide opening between meals and Kids Area with 330mm deep bulkhead above opening



### Option Internal02

Provide corner sliding door option in conjunction with option Internal01 only.  
Remove 330mm deep bulkhead to opening between Meals and Kids Area



### Option Internal03

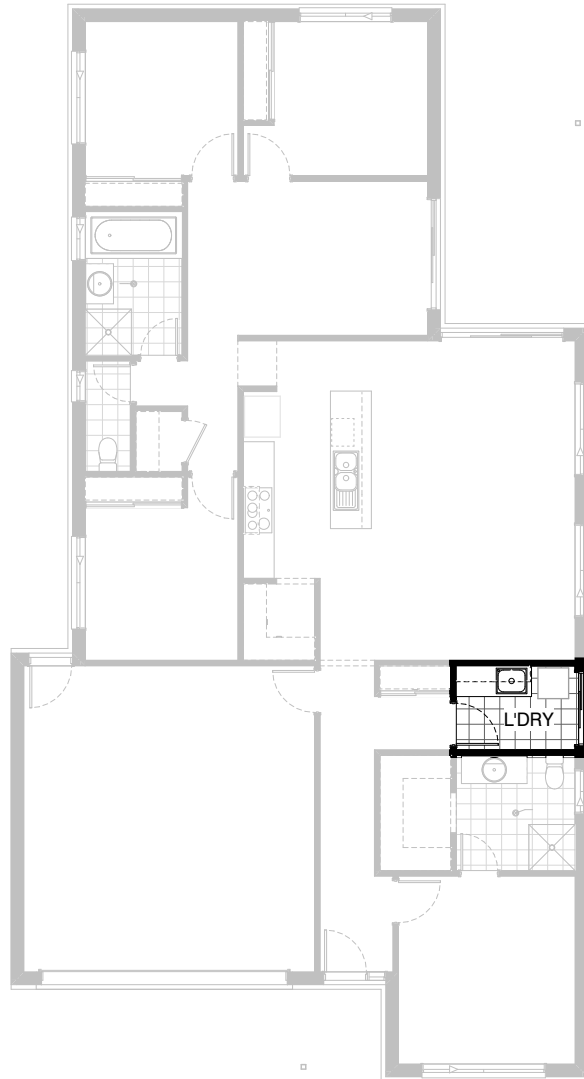
Provide raked ceiling option to Meals and Family with bulkhead and standard ceiling height over Kitchen





### Option Ensuite01

Provide Ensuite option with 720mm hinged door access from Bed 1 directly to Walk-in Robe



### Option Laundry01

Provide Laundry upgrade with laminate cupboards and stainless steel inset trough including  
2No. 700mm base cupboards,  
2No. 700mm overhead cupboards,  
additional benchtop and tiled splashback to suit