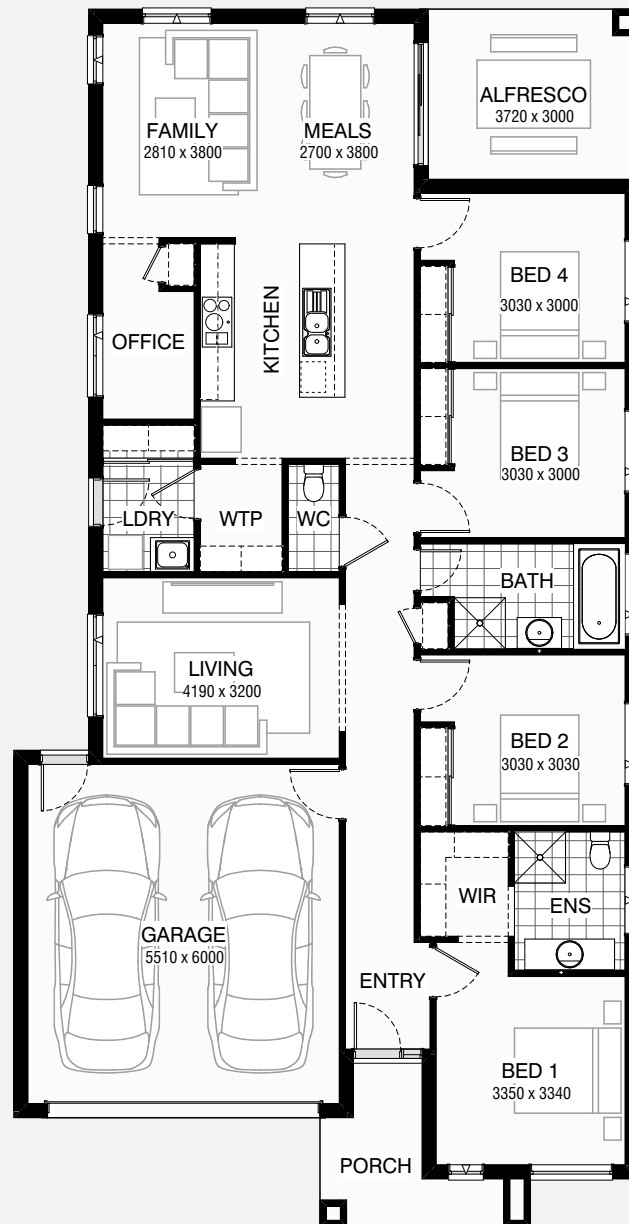


CYPRESS 22

🏠 4 🚗 2 🚗 2

Total squares 22.3sq



B
SERIES

Minimum
Lot Width
12.5m

Minimum
Lot Length
28.0m

Design Dimensions
11,030mm(W) x 21,470mm(L),

Facade Choices
Brentwood, Glendale, Inglewood,
Malibu, Northridge, Pasadena, Santa Monica.
Details based on Inglewood façade floorplan (illustrated)

DESIGN DIMENSIONS

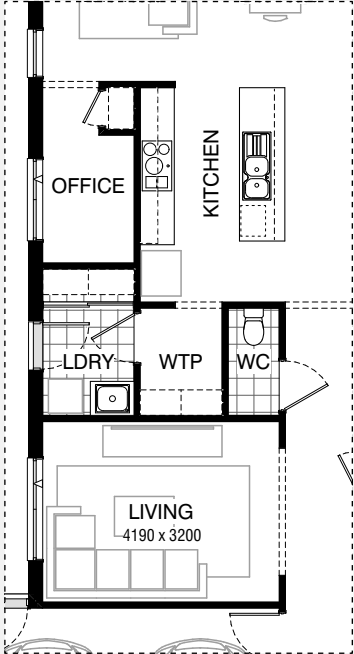
Residence	153.8m ²	16.6sq
Garage	36.4m ²	3.9sq
Porch	6.2m ²	0.7sq
Alfresco	11.2m ²	1.2sq
Total	207.6m²	22.3sq

Burbank 

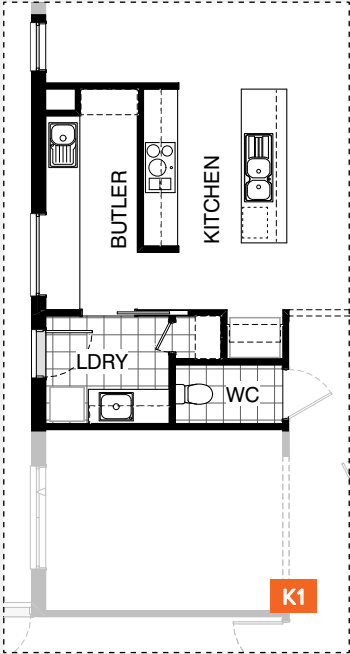
*Copyright conditions. All photos and illustrations are representative only. Floor plans and specifications may be varied by Burbank without notice, the dimensions are diagrammatic only and a Building Contract with final drawings will display correct dimensions and detail. All designs are the property of Burbank and must not be used, reproduced, copied or varied, wholly or in part without written permission from an authorised Burbank representative. Copyright Burbank Australia Pty Ltd. ABN 91 007 099 872. Builders Registration Number CDB-U-52603.



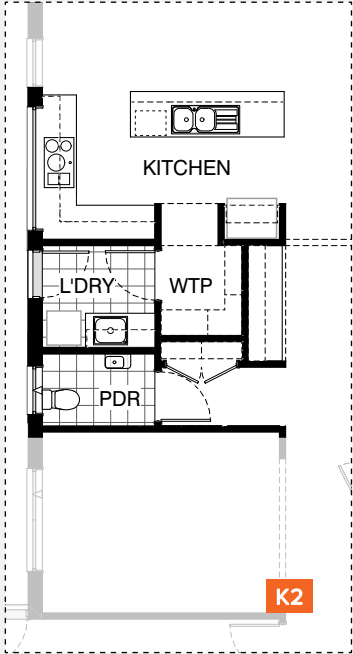
KITCHEN OPTIONS



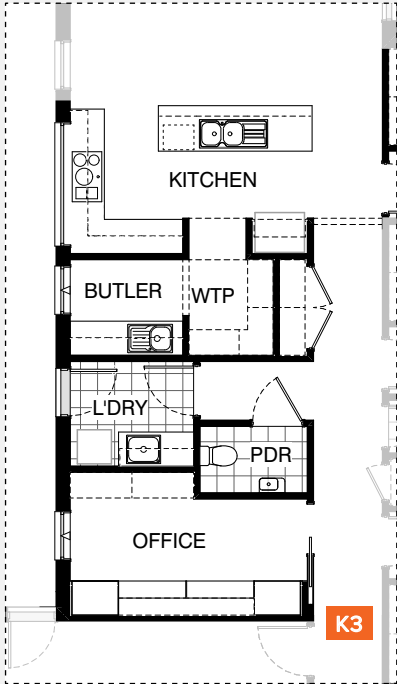
Master Kitchen Design



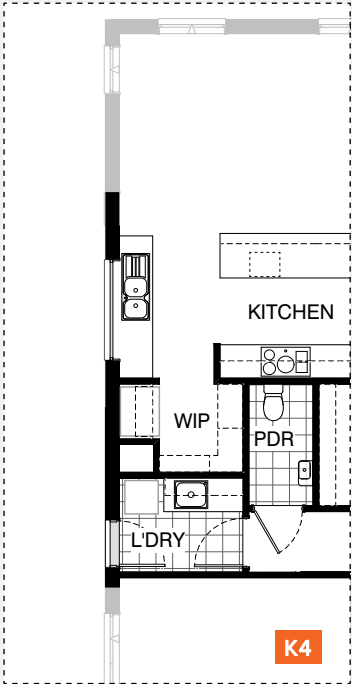
K1



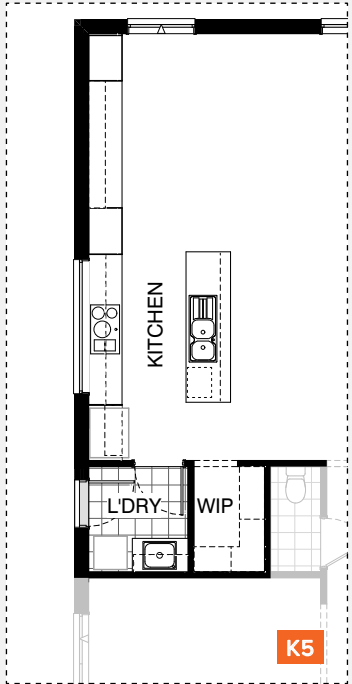
K2



K3



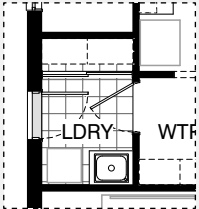
K4



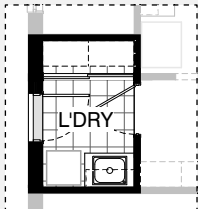
K5



LAUNDRY OPTIONS

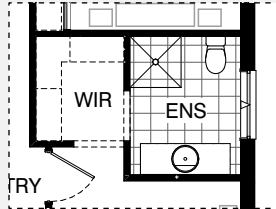


Master Laundry Design

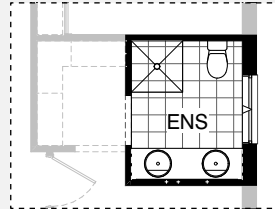


LD1

ENSUITE OPTIONS

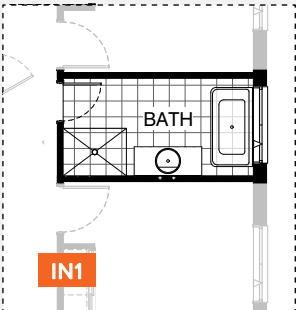


Master Ensuite Design

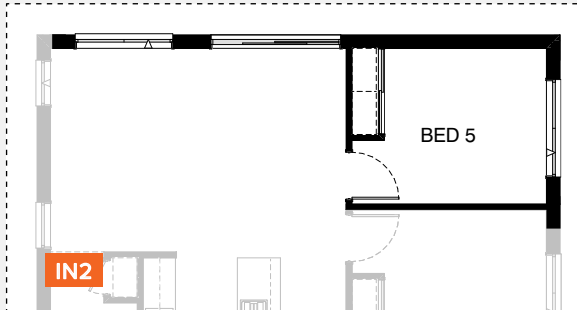


EN1

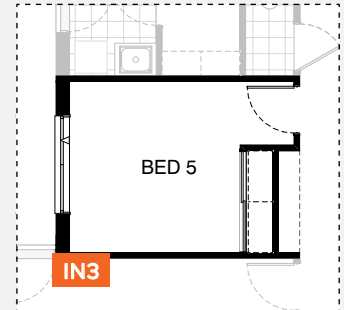
INTERNAL OPTIONS



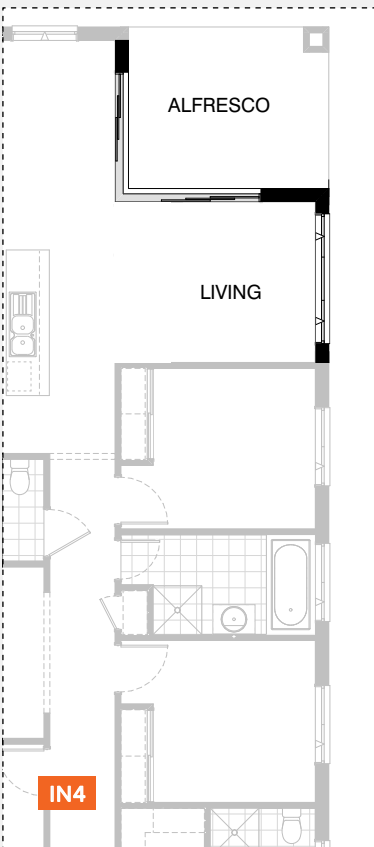
IN1



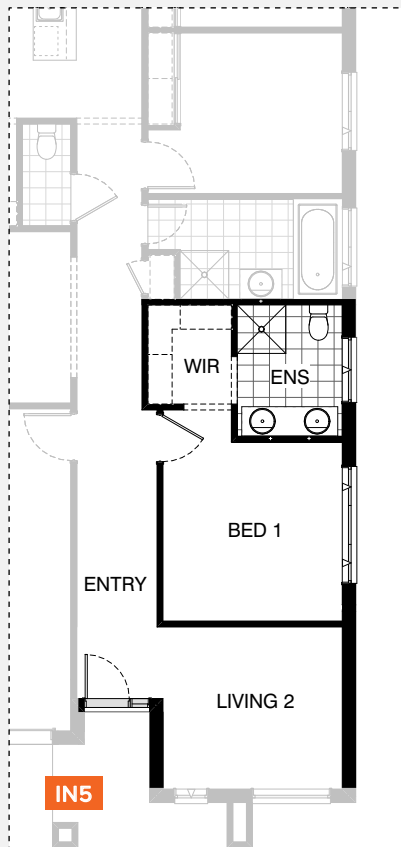
IN2



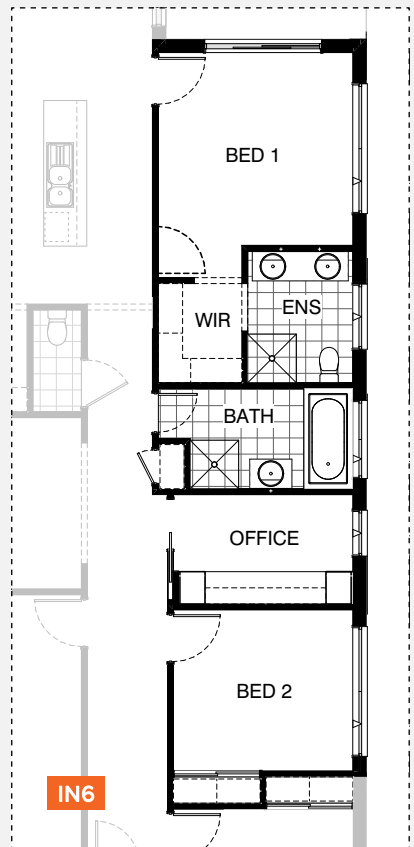
IN3



IN4



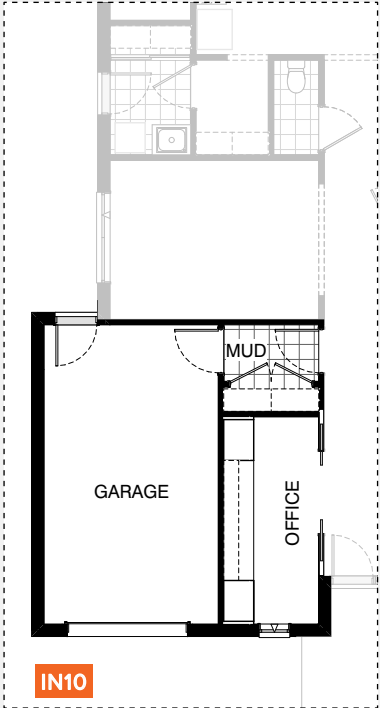
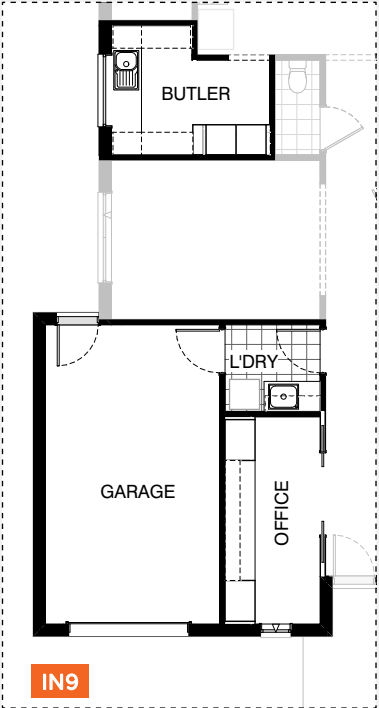
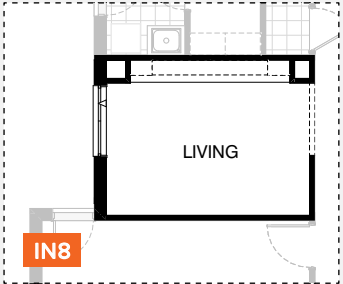
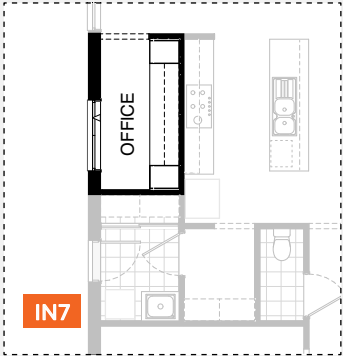
IN5



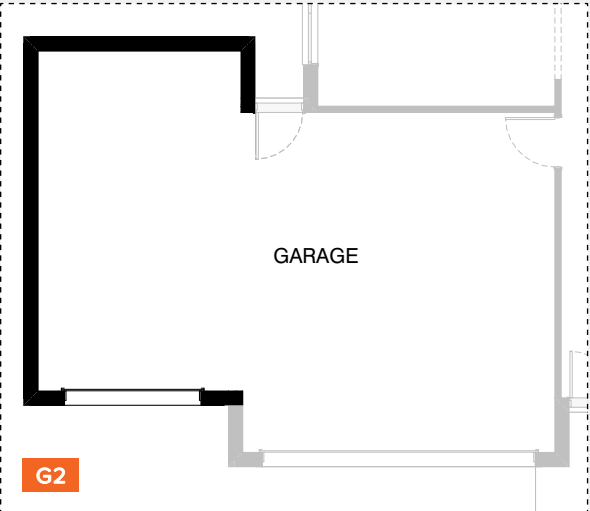
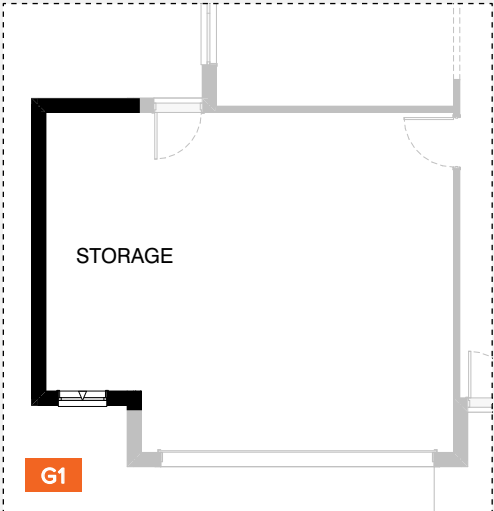
IN6



INTERNAL OPTIONS



GARAGE OPTIONS



CYPRESS 22

OPTION DESCRIPTIONS

Kitchen Option 01

Provide Butler's Pantry in lieu of Walk-in Pantry and Office including:

20mm stone benchtop,
1No. 900mm base cupboard,
3No. 800mm base cupboards,
open shelf over relocated Ref space,
1No. built-in Linen cupboard with 520mm hinged door,
4No. 450mm shelves.

Relocate WC

Provide 1No. 1200mm x 1450mm aluminium fixed window with no bottom reveal.

Laundry includes:

1No. 920mm cavity sliding door,
1No. 900mm base cupboard with inset trough,
1No. 450mm base cupboard,
1No. 900mm overhead cupboard,
1No. 450mm overhead cupboard,
32mm laminate benchtop and tiled splashback to suit.

Note: Kitchen cabinetry to remain unchanged.

Kitchen Option 02

Provide Kitchen upgrade option with L-shaped benchtop, relocating Ref space and Laundry.

Provide Study Nook in lieu of Office and Powder in lieu of WC.

Kitchen includes:

1No. 900mm retractable rangehood,
1No. 900mm underbench oven and cooktop,
1No. 450mm drawer unit,
1No. dishwasher provision,
1No. microwave provision with pot drawer,
1No. 900mm base cupboard,
1No. 900mm corner base cupboard,
2No. 700mm base cupboards,
1No. 350mm base cupboard,
2No. 700mm overhead cupboards,
1No. 350mm overhead cupboard,
2No. 300mm overhead cupboards,
1No. 600mm corner overhead cupboard,
open shelf over Ref space,
1No. 514mm x 2170mm aluminium fixed window with no bottom reveal over cooker.

Walk-through Pantry includes:

4No. 450mm shelves,
4No. 300mm shelves.

Laundry includes:

1No. 870mm hinged door,
1No. 800mm base cupboard with inset trough,
1No. 350mm base cupboard,
1No. 800mm overhead cupboard,
1No. 350mm overhead cupboard,
32mm laminate benchtop and tiled splashback to suit.

Study Nook joinery includes:

1No. 600mm deep 32mm thick laminate desk,
1No. 450mm wide drawer unit beneath desk,
2No. 300mm deep 60mm thick open shelves over desk.

Powder includes:

1No. wall basin

Provide Linen cupboard with

2No. 620mm hinged doors and
4No. 300mm shelves.

1No. 1029mm x 850mm aluminium awning window,

Flip hinged door and built-in Robe locations to Bed 4.

Kitchen Option 03

Provide Kitchen upgrade option with L-shaped benchtop, relocating the Ref space, Laundry, WC and Office.

Laundry, WC and Office.

Kitchen includes:

1No. 900mm retractable rangehood,
1No. 900mm underbench oven and cooktop,

1No. 450mm drawer unit,
1No. dishwasher provision,
1No. microwave provision with pot drawer,

1No. 900mm base cupboard,
1No. 900mm corner base cupboard,
2No. 700mm base cupboards,

1No. 350mm base cupboard,
2No. 700mm overhead cupboards,
1No. 350mm overhead cupboard,

2No. 300mm overhead cupboards,
1No. 600mm corner overhead cupboard,
open shelf over Ref space,

1No. 514mm x 2170mm aluminium fixed window with no bottom reveal over cooker.

Walk-through Pantry includes:

4No. 450mm shelves.

Butler's Pantry includes:

1No. single bowl sink,

1No. 700mm base cupboard,

2No. 600mm base cupboards,

1No. 700mm overhead cupboard,

2No. 600mm overhead cupboards,

Provide 1No. 1800mm x 850mm

aluminium awning window and

20mm stone benchtop with

tiled splashback.

Laundry includes:

870mm hinged door,

inset trough,

1No. 800mm base cupboard with inset trough,

1No. 450mm base cupboard,

1No. 800mm overhead cupboard,

1No. 450mm overhead cupboard,

32mm laminate benchtop and

tiled splashback to suit.

Office joinery includes:

1No. 600mm deep 32mm thick laminate desk,

2No. 800mm laminated cupboards with

5No. 450mm shelves,

2No. 60mm thick 300mm deep open shelves over desk,

4No. 450mm shelves,

1No. 1800mm x 850mm aluminium awning window

in lieu of standard.

Powder includes:

1No. wall basin

Provide Linen cupboard with

2No. 720mm hinged doors and

4No. 450mm shelves.

Flip hinged door and built-in Robe locations to Bed 4.

Kitchen Option 04

Provide Kitchen upgrade option with 3-way benchtop relocating the Ref space, Laundry, WC and provide Study Nook in lieu of Office. Kitchen includes:

1No. 900mm retractable rangehood,

1No. 900mm underbench oven and cooktop,

1No. 450mm drawer unit,

1No. dishwasher provision,

1No. microwave provision with pot drawer,

2No. 900mm base cupboards,

2No. 700mm base cupboards,

2No. 600mm base cupboards,

2No. 700mm overhead cupboards,

open shelf over Ref space,

1No. 1200mm x 1810 aluminium fixed window

with no bottom reveal over dishwasher

Walk-in Pantry includes:

4No. 450mm shelves,



CYPRESS 22

OPTION DESCRIPTIONS

4No. 300mm shelves.

Laundry includes:

870mm hinged door,

1No. 900mm base cupboard with inset trough,

1No. 450mm base cupboard,

1No. 900mm overhead cupboard,

1No. 450mm overhead cupboard,

32mm laminate benchtop and tiled splashback to suit.

Provide 4No. 450mm shelves to

convert Coats cupboard to Passage into Linen.

Study Nook joinery includes:

1No. 600mm deep 32mm thick laminate desk,

1No. 450mm wide drawer unit beneath desk,

2No. 60mm thick 300mm deep

open shelves over desk.

Powder includes:

1No. wall basin

Note: Option not available in conjunction with Internal01

Kitchen Option 05

Provide alternate Kitchen option with Study Nook in lieu of Office.

Kitchen includes:

1No. 900mm retractable rangehood,

1No. 900mm underbench oven and cooktop,

1No. 450mm drawer unit,

1No. dishwasher provision,

1No. microwave provision with pot drawer,

3No. 900mm base cupboards,

2No. 900mm overhead cupboards,

open shelf over Ref space,

1No. 514mm x 2410mm aluminium fixed

window with no bottom reveal over cooker.

Walk-in Pantry includes:

4No. 450mm shelves,

Laundry includes:

1No. 870mm hinged door,

1No. 900mm base cupboard with inset trough,

1No. 900mm overhead cupboard,

32mm laminate benchtop and tiled splashback to suit.

Study Nook joinery includes:

1No. 600mm deep 32mm thick laminate desk,

2No. 800mm laminated cupboards with

5No. 450mm shelves,

2No. 300mm deep 60mm thick

open shelves over desk.

Provide 2No. 2057mm x 1210mm aluminium

awning windows to Family in lieu of standard.

Laundry Option 01

Provide Laundry upgrade with laminate base and overhead cupboards and inset trough, including:

1No. 800mm base cupboard,

1No. 800mm overhead cupboard,

32mm laminate benchtop and tiled splashback to suit.

Ensuite Option 01

Provide Ensuite upgrade option including:

1No. 1782mm vanity with double basins

including 1 row tiling beneath mirror

to suit wall-to-wall benchtop including

returns in lieu of standard.

Internal Option 01

Provide Bathroom upgrade option, including:

1No. 1500mm freestanding bath,

1No. 1282mm vanity with single basin,

900mm x 1200mm tiled shower base,

Remove Coats cupboard to Passage.

Note:

Option not available in conjunction with Kitchen04

Internal Option 02

Provide 5th Bedroom option in lieu of Alfresco, including:

1No. built-in Robe with 450mm shelf and hanging rail,

1No. 870mm hinged door,

1No. 1200mm x 1810mm aluminium awning window to Bed 5 and

provide 1No. 1200mm x 1810mm aluminium awning window,

1No. 2095mm x 2410mm aluminium sliding door in lieu of

standard windows to Family/Meals.

Internal Option 03

Provide additional Bedroom option in lieu of Living area, including:

built-in Robe with sliding doors,

450mm shelf and hanging rail,

1No. 870mm hinged door,

1No. 1200mm x 1810mm aluminium

awning window in lieu of standard,

option also provides Alcove with bulkhead over to Entry Passage.

Internal Option 04

Provide additional Living area option in lieu of Bed 4, including:

Removing built-in Robe and hinged door,

1No. 1200mm x 2410mm aluminium awning window

in lieu of standard,

1No. 2107mm x 2710mm x 2410mm aluminium corner sliding door

in lieu of standard.

Internal Option 05

Provide Bed 1 option which moves it behind Living to the front of the home, including:

1No. 2057mm x 2170mm aluminium awning window in lieu of standard.

Ensuite has 1782mm vanity with double basins.

Front Entry door moves 360mm towards Porch to allow for larger opening

to new Living.

Note: Porch reduces and Entry increases by 0.6m²

Internal Option 06

Provide Bed 1 option which moves it to the rear of the home, including:

1No. 2095mm x 2170mm aluminium sliding door and

1No. 514mm x 2410mm aluminium awning window to Bed 1.

Ensuite has 1782mm vanity with double basins.

Alternate Bed 1 hinged door location shown dashed -

door to be located here if options Kitchen02, Kitchen03 or Kitchen04 are

chosen.

Provide Home Office in lieu of Bed 4, with built-in joinery to new Home

Office,

including:

1No. 600mm deep 32mm thick laminate desk,

2No. 300mm deep 60mm thick open shelves

2No. 450mm laminated cupboards with 6No. 450mm shelves,

1No. 920mm cavity sliding door,

1No. 1800mm x 850mm aluminium awning window in lieu of standard.

Internal Option 07

Provide built-in joinery option to Home Office,

including:

1No. 600mm deep 32mm thick laminate desk,

2No. 300mm deep 60mm thick open shelves

2No. 450mm laminated cupboards with

6No. 450mm shelves,

Remove built-in plaster-lined store.

Internal Option 08

Provide built-in joinery option to Living,

including:

1No. 450mm deep 32mm thick laminate benchtop,

4No. 800mm TV cabinets,

2No. 450mm open shelf units,

2No. 60mm thick 300mm deep open shelves,

2No. plaster lined voids as shown.

Provide 1No. 2057mm x 1450mm aluminium awning window

in lieu of standard.



CYPRESS 22

OPTION DESCRIPTIONS

Internal Option 09

Provide Home Office/Alternate laundry option with Single car Garage in lieu of Double Garage, and Butler's Pantry in lieu of Walk-in Pantry/Laundry, including:

Laundry with 870mm hinged door,
1No. 700mm base cupboard with inset trough,
1No. 350mm base cupboard,
1No. 700mm overhead cupboard,
1No. 350mm overhead cupboard,
32mm laminate benchtop and tiled splashback to suit.

Home Office with built-in joinery includes:

1No. 600mm deep 32mm thick laminate desk,
2No. 800mm laminated cupboards,
2No. 300mm deep 60mm thick open shelves over desk,
2No. 820mm bi-parting cavity sliding doors,
1No. 2057mm x 610mm aluminium awning feature window.

Butler's Pantry includes:

1No. 180mm wide full height wine rack,
2No. 600mm oven towers with microwave provisions,
600mm deep 20mm thick stone benchtop with single bowl sink,
2No. 900mm base cupboards,
2No. 450mm deep adjustable shelf units,
1No. 1200mm x 1450mm aluminium fixed window with no bottom reveal.

Provide 1No. 2410mm wide Garage door to new single Garage in lieu of standard with 450mm(d)x470mm(w) engaged pier to project under eaves.

Note:

Provide 1No. 700mm base cupboard to Kitchen island bench in lieu of MW space & pot drawer

Internal Option 10

Provide Home Office/Mud room option with Single car Garage in lieu of Double Garage, including:
Tiled Mud room with 870mm hinged door,
1No. built-in Linen cupboard with 2No. 820mm hinged doors and 4No. 450mm shelves

Home Office with built-in joinery includes:

1No. 600mm deep 32mm thick laminate desk,
2No. 800mm laminated cupboards,
2No. 300mm deep 60mm thick open shelves over desk,
2No. 820mm bi-parting cavity sliding doors,
1No. 2057mm x 610mm aluminium awning feature window.

Provide 1No. 2410mm wide Garage door to new single Garage in lieu of standard with 450mm(d)x470mm(w) engaged pier to project under eaves.

Garage Option 01

Provide extension to Garage to create additional Storage area including additional 1No. 2057mm x 850mm aluminium awning feature window. Increases width of the home by 1680mm. Increases area of the home by 9.07m²

Garage Option 02

Provide extension to Garage to create Triple Car Garage including additional 2290mm x 2410mm garage door as per colour selection. Increases width of the home by 3600mm. Increases area of the home by 23.85m²

