

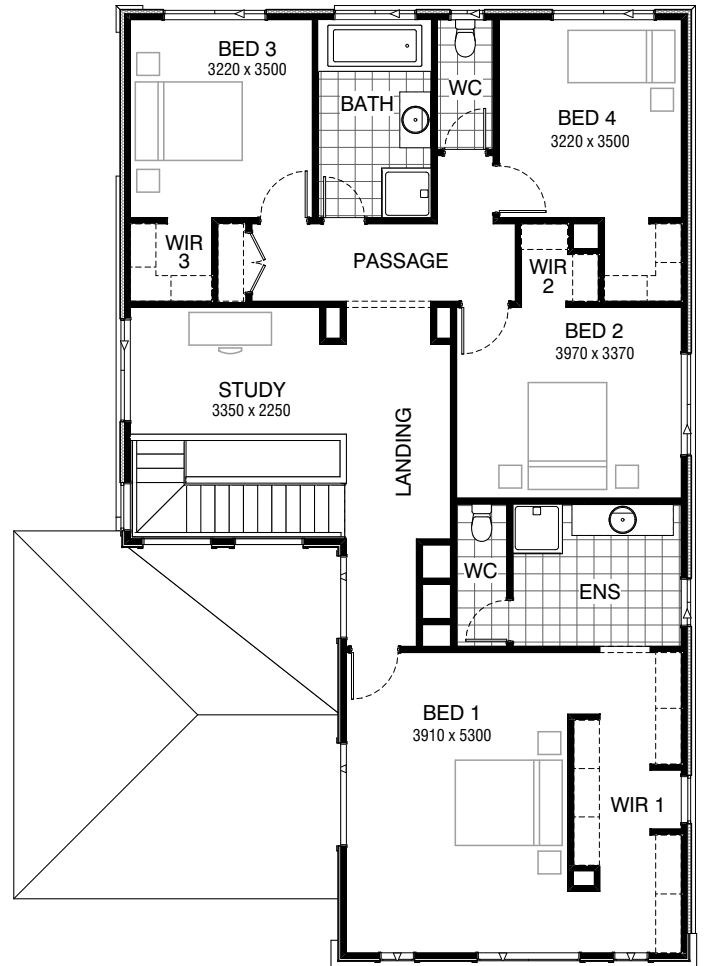


Total squares **34.0sq**

 **4**  **2.5**  **2**



GROUND FLOOR



FIRST FLOOR

FLOORPLAN OPTIONS

All available ready-to-go floorplan options for this design can be viewed on the following pages, or visit www.burbank.com.au.

Facades available:

Condor, Matisse, Monet, Aqua	
Hester, Metropolitan, Orana	
Rainforest	
Overall home width	11.99m
Overall home length	16.91m




Residence	263.6m ²	28.4sq
Garage	36.5m ²	3.9sq
Porch	4.3m ²	0.5sq
Alfresco	11.5m ²	1.2sq
Total	315.9m²	34.0sq

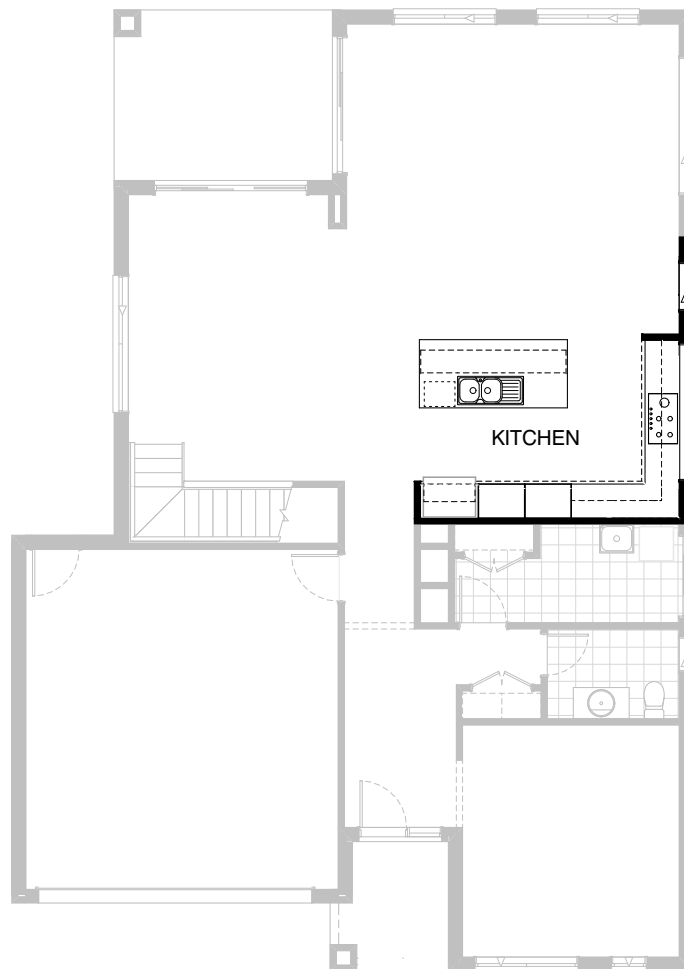
Listed details based on Condor façade floorplan (illustrated)

*Copyright conditions. All photos and illustrations are representative only. Floor plans and specifications may be varied by Burbank without notice, the dimensions are diagrammatic only and a Building Contract with final drawings will display correct dimensions and detail. All designs are the property of Burbank and must not be used, reproduced, copied or varied, wholly or in part without written permission from an authorised Burbank representative. Copyright Burbank Australia Pty Ltd. ABN 91 007 099 872. Builders Registration Number CDB-U-52603.

Call 13 BURBANK
Visit burbank.com.au

FLOORPLAN OPTIONS




 **4**  **2.5**  **2**

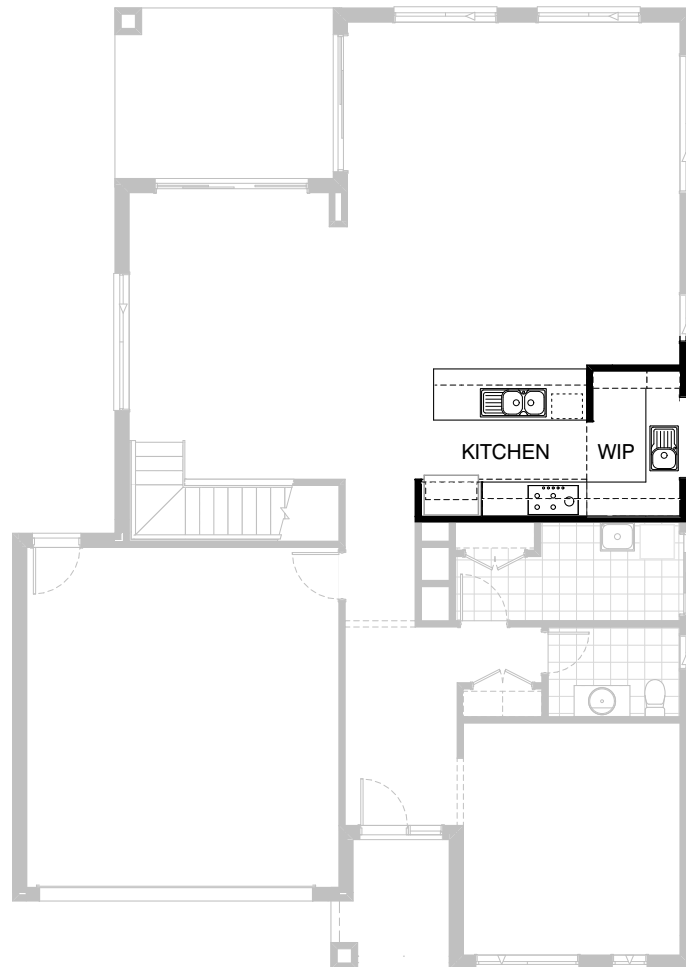


Option K-1

Provide 'L' shape Kitchen Upgrade and delete W.I.P to suit.
Provide 1200mm wide island bench, 1no. laminated MW. provision with pot drawer below,
1no. 800mm base cabinets, 1no. laminated DW. provision, 1no. 450mm
drawer unit, 1no. 900mm corner base cabinet, 1no. 300mm base cabinet
1no. 700mm base cabinet, 2no. 800mm laminated tall pantry cabinets,
1no. laminated open shelf above refrigerator space, 1no. 900mm under bench
oven & cooktop with 1no. 900mm retractable rangehood above,
2no. 700mm overhead cabinets, 1no. 600mm overhead cabinet,
1no. 900mm overhead cabinet,
1no. 600mm corner overhead cabinet and 1no. 514mm x 2400mm
fixed window in lieu of standard 2no. 1800mm x 850mm
aluminium sliding window with additional tiled splashback and bench top to suit.
adjust window in family by 590mm

FLOORPLAN OPTIONS

 **4**  **2.5**  **2**

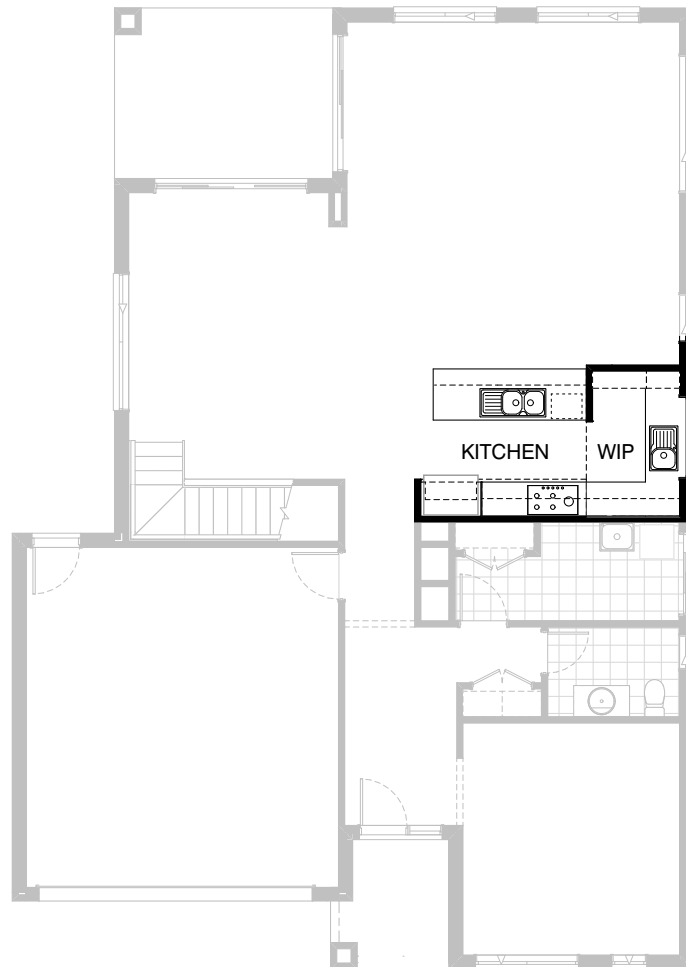


Option K-2

Provide Kitchen / W.I.P Upgrade with 2no. 800mm pot drawers, 1no. 900mm underbench oven with 1no. 900mm hotplate and 1no. 900mm retractable rangehood above. Provide additional 1no. 350mm base cabinet, 2no. 800mm overhead cabinets, 1no. 350mm overhead cabinet, 1no. laminated open shelf above refrigerator space, 1no. 600mm laminated overhead open shelf, 1no. 450mm drawer unit, 1no. laminated DW. provision, 1no. 900mm base cabinet, 1no. laminated MW. provision, 2no. 800mm base cabinets, 1800(h) laminated shelving, 1no. 1200mm x 1450mm aluminium fixed window with plaster reveals in lieu of standard to W.I.P, 1no. single bowl sink to W.I.P., 900mm deep island bench in lieu of standard 800mm and additional plaster bulkhead to Kitchn / W.I.P, tiled splashback and bench top to suit.

FLOORPLAN OPTIONS

 **4**  **2.5**  **2**



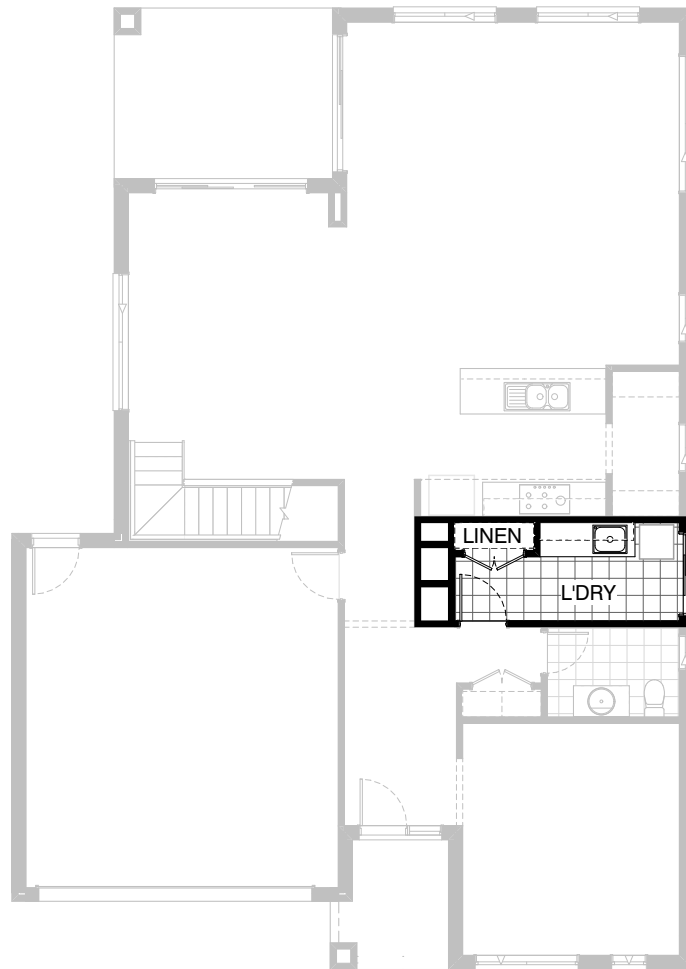
Option K-3

Provide additional 1 no. 800mm base cabinet
with 1 no. 800mm laminated open shelf above
to rear of island bench.

NOTE: This Option can only be used with Option K-2

FLOORPLAN OPTIONS




 **4**  **2.5**  **2**

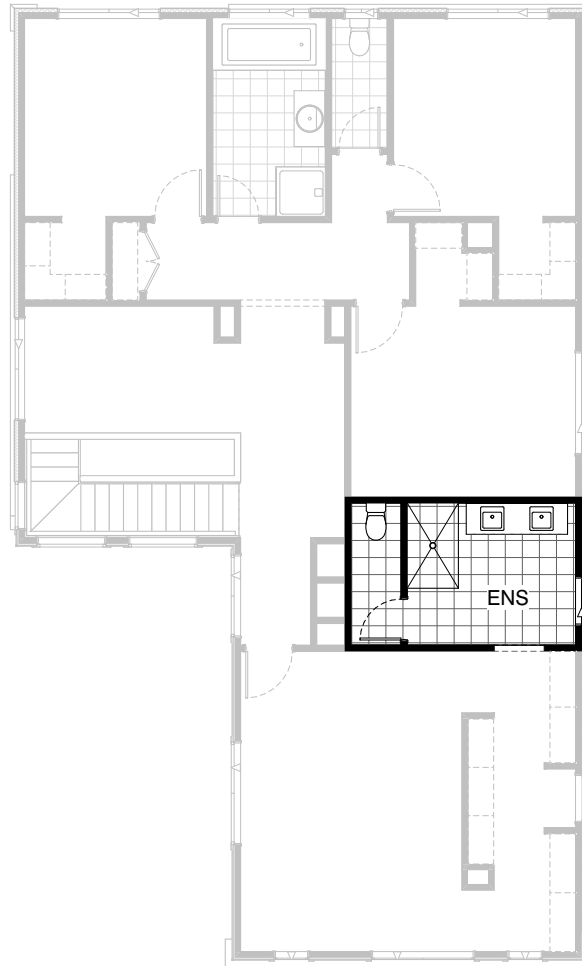


Option LD-1

Provide Laundry Upgrade with s.s. inset trough,
2no. 800mm base cabinets, 2no. 800mm
overhead cabinets and additional tiled splashback
and bench top to suit.

FLOORPLAN OPTIONS

 **4**  **2.5**  **2**

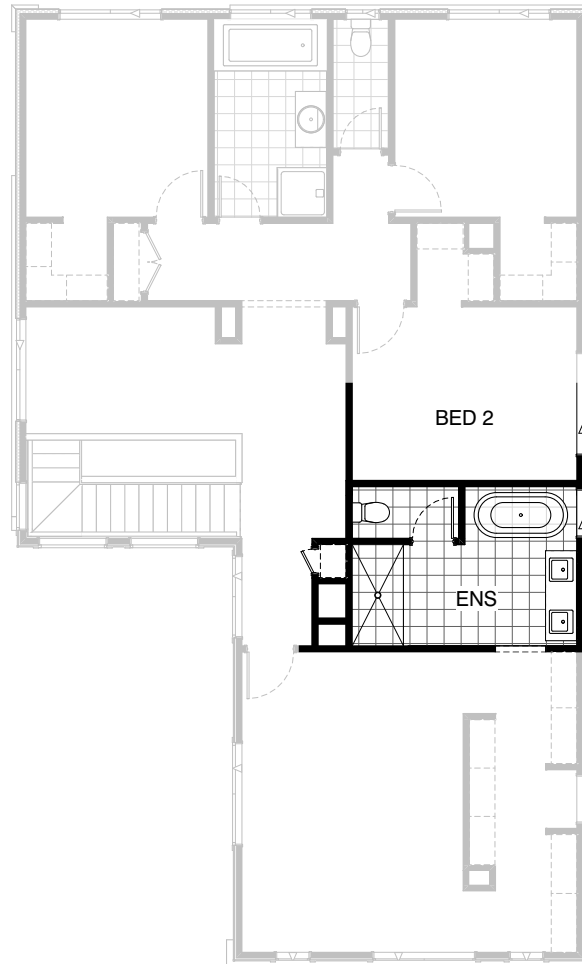


Option ENS-1 FF

Provide Ensuite Upgrade with 1no. 900mm x 1500mm tiled shower base in lieu of standard and double vanity unit with drawer unit in lieu of standard.

FLOORPLAN OPTIONS



 **4**  **2.5**  **2**



Option ENS-2 FF

Provide ensuite Upgrade by widening ensuite by 300mm and reducing Bed 2 by 300mm, provide 1543mm x 850mm aluminium sliding window in lieu of 1800mm x 850mm, 1800mm x 900mm tiled shower base, free standing bath tub, 1582mm double vanity bowl unit and in wall cistern to WC in lieu of standard, relocate fixtures and window to suit new layout

FLOORPLAN OPTIONS




 **4**  **2.5**  **2**

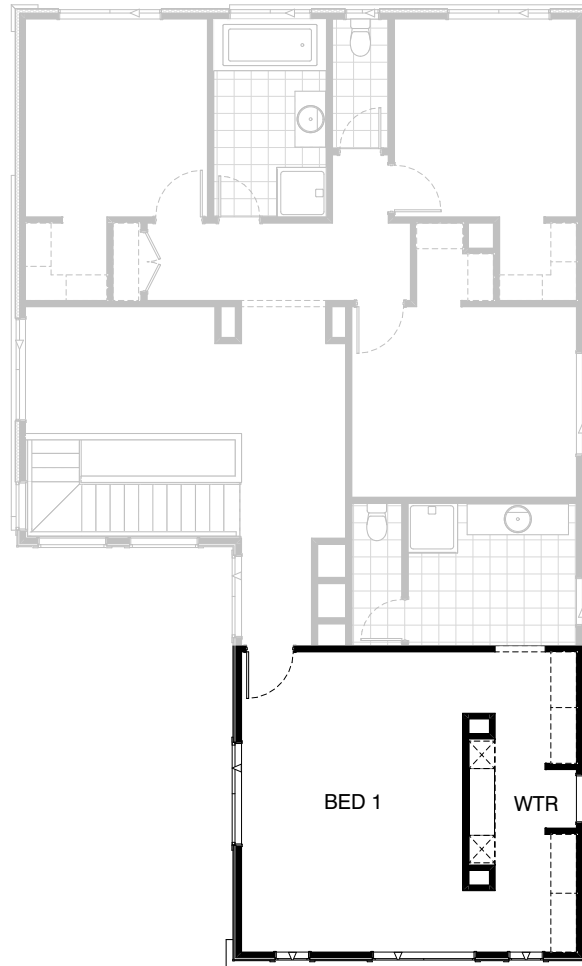


Option IP1-1 GF

Provide Guest Bedroom in lieu of Living by reducing Living length by 600mm. Provide additional 1no. 820mm flush panel hinged door, site built plaster lined robe with hanging rail / shelf and 2no. 520mm hinged doors. Provide Powder / Ensuite to include 720mm CSD, with additional 1no. 900mm x 900mm polymarble shower base and 1no. 1027mm x 610mm aluminium sliding window in lieu of standard 1no. 1800mm x 610mm window to suit.

FLOORPLAN OPTIONS




 **4**  **2.5**  **2**

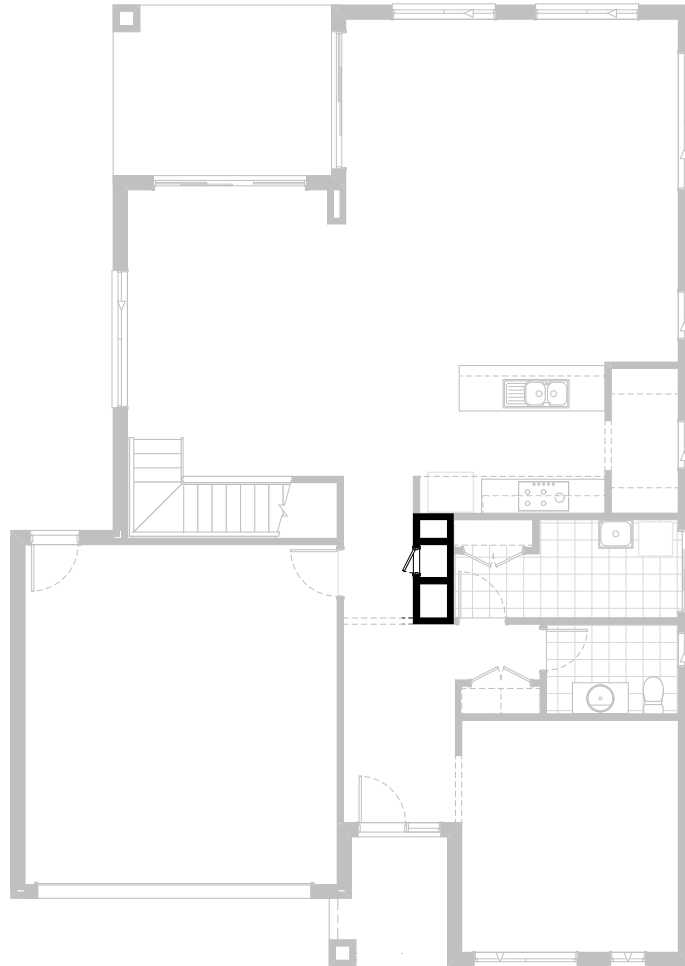


Option IP1-2 FF

Provide dressing table option with 32mm laminated bench top,
2no. 450mm wide laminated drawer / shelving units, mirror
and 300mm plastered bulkhead above.

FLOORPLAN OPTIONS




 **4**  **2.5**  **2**

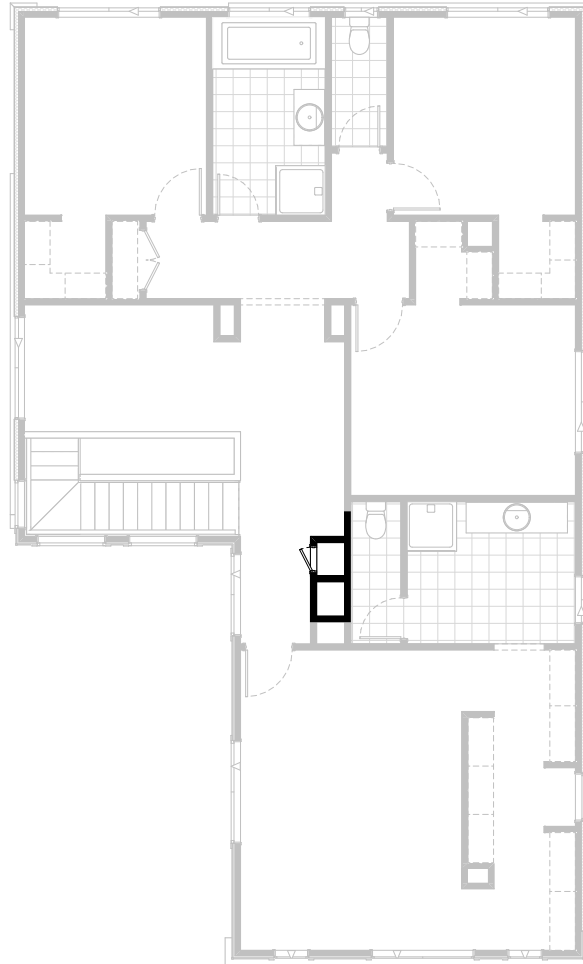


Option IP1-3 GF

Provide Laundry chute to ground floor and first floor in lieu of void

FLOORPLAN OPTIONS




 **4**  **2.5**  **2**

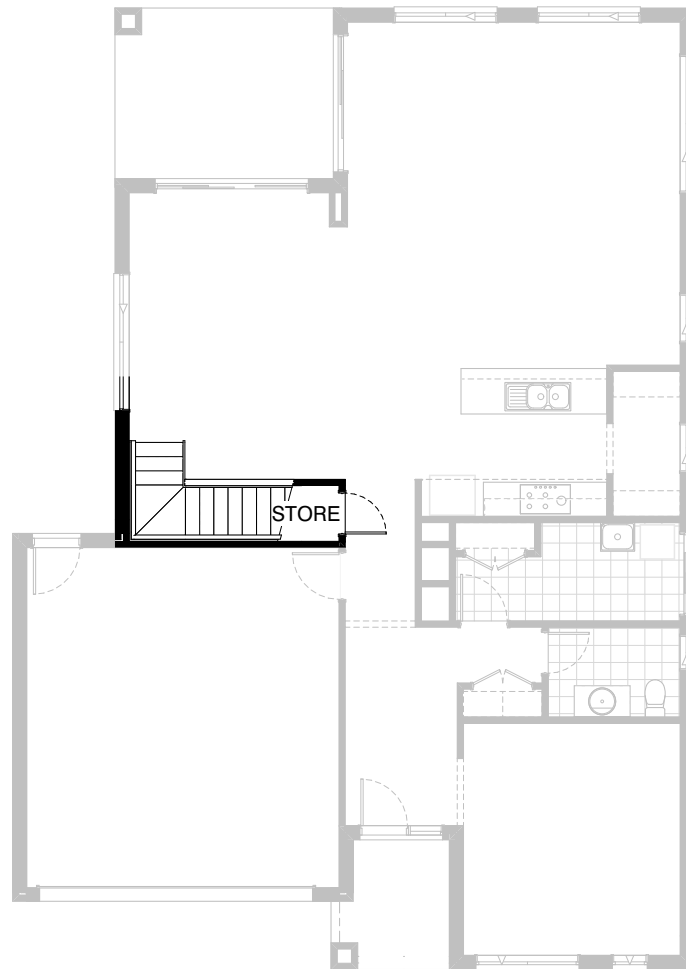


Option IP1-3 FF

Provide Laundry chute to ground floor and first floor in lieu of void

FLOORPLAN OPTIONS

 **4**  **2.5**  **2**





Option IP1-4 GF

Provide Store room below stair including 720mm flush panel hinged door, plaster lined walls and raked plaster ceiling on battens with square set cornice including additional light point.

NOTE: Flooring not included

FLOORPLAN OPTIONS

 **4**  **2.5**  **2**

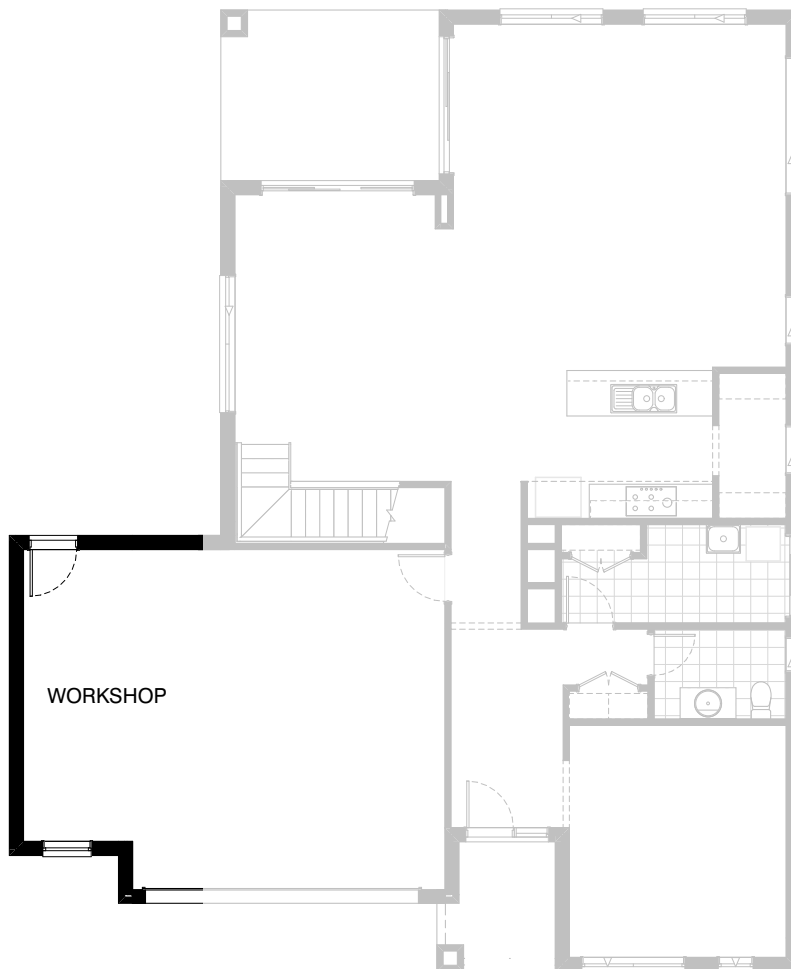


Option G-1

Provide extension to Garage to create additional Storage area. Provide additional 1800mm x 850mm aluminium fixed window
Increases area by 9.45m².
Increases width by 1680mm.

FLOORPLAN OPTIONS




 **4**  **2.5**  **2**

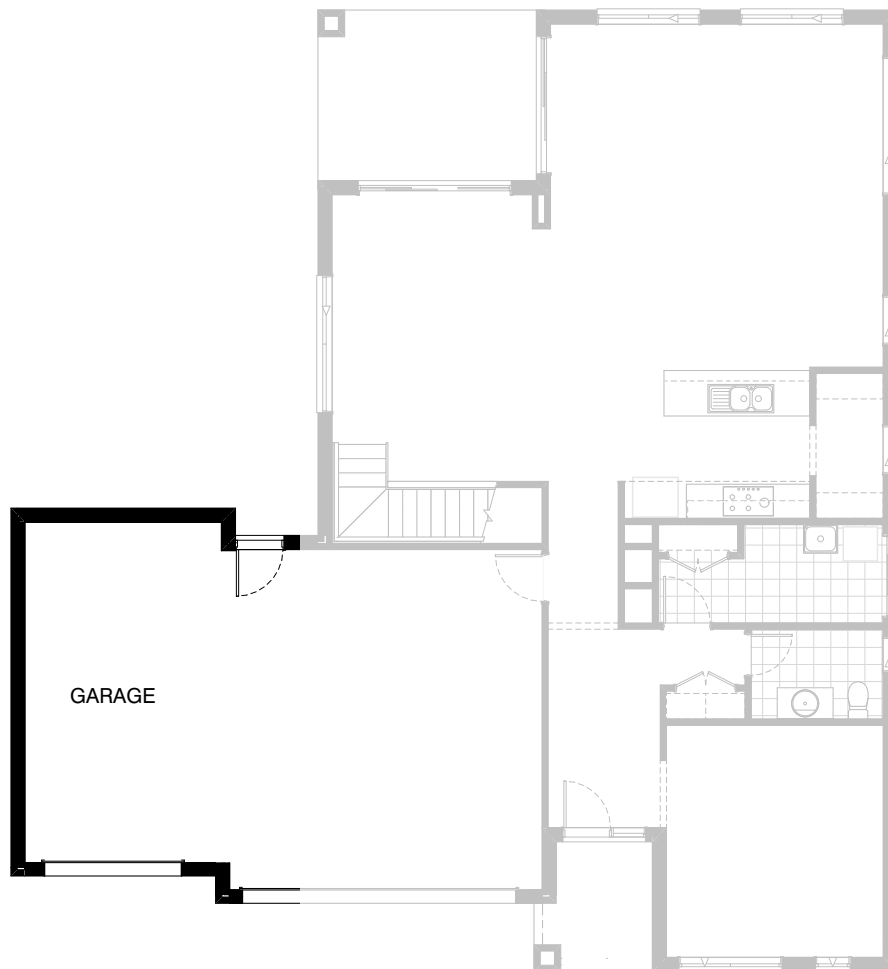


Option G-2

Provide extension to Garage to create additional Workshop area. Provide additional 1800mm x 850mm aluminium fixed window
Increases area by 10.81m².
Increases width by 1920mm.

FLOORPLAN OPTIONS

 **4**  **2.5**  **2**



Option G-3

Provide triple Garage Option including additional garage door as per colour selection.
Provide pitched roof over garage to all facades including additional downpipe.
Increases area by 23.81m².
Increases width by 3600mm.