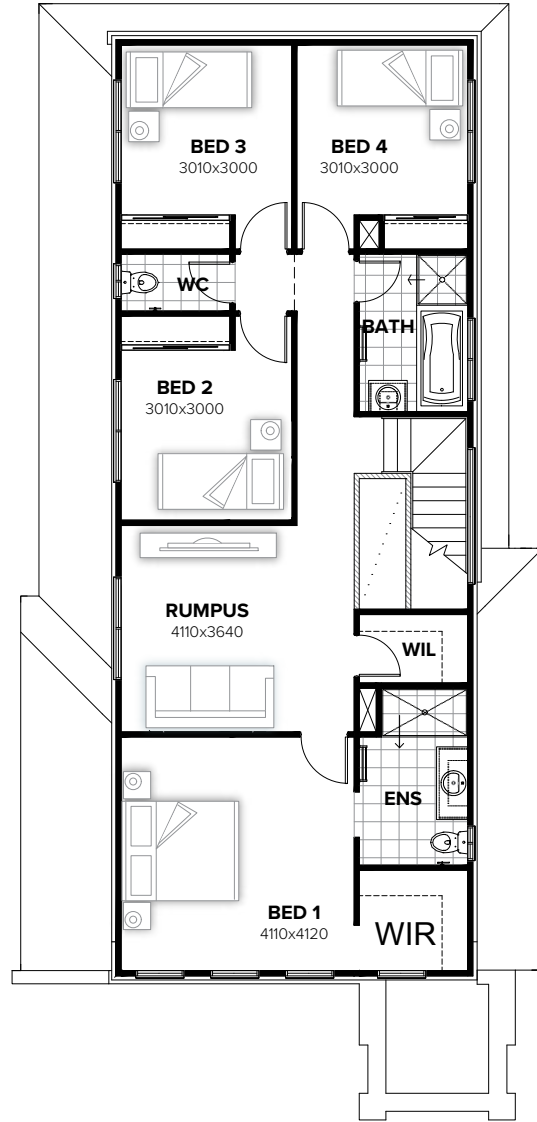


GROUND FLOOR



FIRST FLOOR

FLOORPLAN OPTIONS

We personalise our floorplans. Talk to us about our huge range of ready-to-go design options or simply visit www.burbank.com.au/south-australia for more details.

Facades available:

Cambridge, Coventry, Halifax, Yorke
Northampton, Oxford, Westminster

Overall home width 8.87m

Overall home length 19.19m

Residence	200.9m ²	21.6sq
Garage	38.9m ²	4.2sq
Porch	3.6m ²	0.4sq
Total	243.5m²	26.2sq

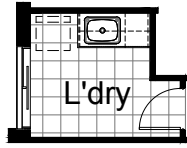
Listed details based on Coventry facade floorplan (illustrated)

*Copyright conditions. All photos and illustrations are representative only. Floor plans and specifications may be varied by Burbank without notice, the dimensions are diagrammatic only and a Building Contract with final drawings will display correct dimensions and detail. All designs are the property of Burbank and must not be used, reproduced, copied or varied, wholly or in part without written permission from an authorised Burbank representative. Copyright Burbank Australia (SA) Pty Ltd. ABN 96 165 533 406. BLD 266709.

Call 13 BURBANK
Visit burbank.com.au

OPTION LD1

Provide laundry upgrade by providing
1no 800mm base cabinet
1no 400mm base cabinet
1no. 800mm overhead cupboard
1no. 400mm overhead cupboard
Adjust bench top & provide additional tiles
to splash back to suit.



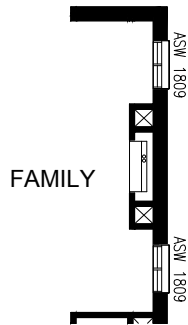
OPTION G1

Provide extension to Garage including
1no. 820mm external
door to create additional Storage area.
Increases area by 5.69m².
Increases width by 1080mm.



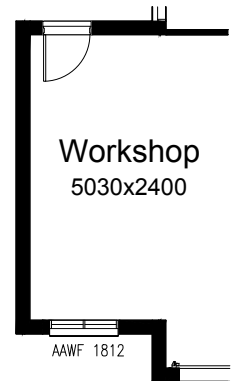
OPTION IP1

Provide fireplace option by including
1no. Real Flame Inspire 900 gas fireplace 400mm off floor
level in a 1400mm x 420mm boxed out plaster wall with a 4
sided black fascia to Family room rear wall.



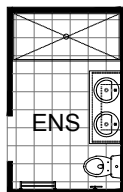
OPTION G2

Provide extension to Garage to create
Workshop area
including 1no. 820mm external door &
additional AAWF 1812
window to suit.
Increases width by 2400mm.
Increases area by 13.22m².



OPTION ENS1

Provide Ensuite upgrade by including
1282mm vanity unit with 2no. basins
900mm x 1910mm tiled shower base



OPTION EP1

Provide Alfresco option with 2no. brick
piers
and earth floor to Alfresco.
Increases area by 15.10m².
Increases length by 3000mm.

